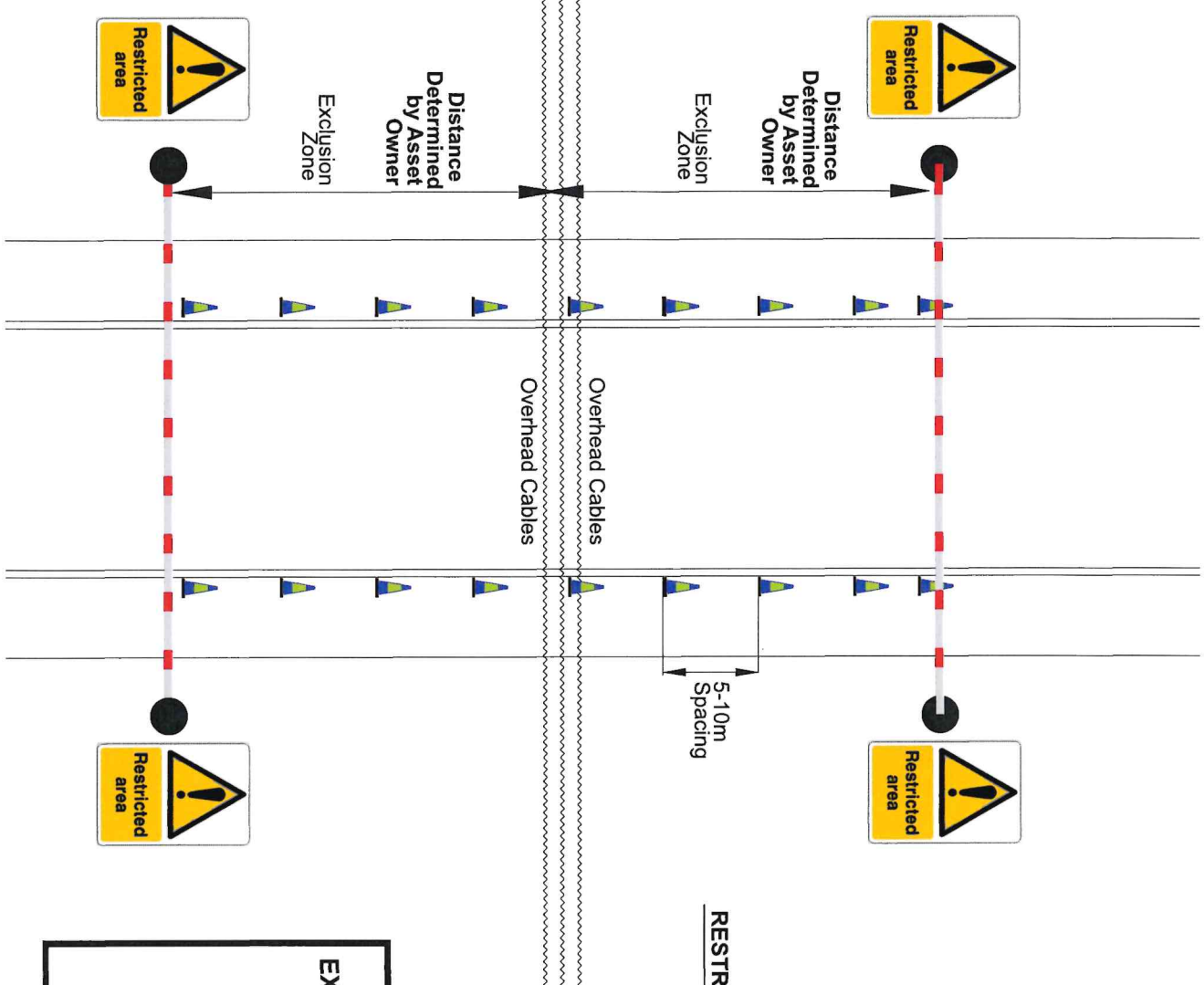


HOULIHAN
STANDARDS
AND
EVIDENCE OF
GOOD
PRACTICE

CONTENTS

- RESTRICTED AREA SET-UP
- REFUELLING AREA SET-UP (TO BE ADAPTED SOON FOR LARGER SITES)
- WATER CUBE SET-UP
- STORAGE OF DRAINAGE FITTINGS FOR LARGER SITES
- DIP TRAY USAGE
- GROUND BEAMS
- STRIP FOUNDS
- USE OF VAC-EX
- SERVICES BACKFILL
- USE OF TOW LOCKS ANDS WHEEL CLAMP ON SMALLER PLANT
- MANHOLE PROTECTION
- PREPERATION FOR SUBSTRUCTURES
- SOIL CLASSIFICATION SIGNAGE
- BUCKET CHANGING SET-UP
- INTERNALDRAINAGE/OVERSITE PRESENTATION (USE OF SAND SUBJECT TO COMMERCIAL AGREEMENT)
- RAMPED ACCESS TO DOORWAYS
- COSHH CAGE SETUP
- NO DUMPER ACCESS TO SPOIL HEAPS SIGNAGE
- GULLY PROTECTION
- SCAFFOLD PLATFORMS
- WALKWAYS



Note
Exclusion zones, height restrictions & restricted area distances to be dictated by asset owner. SEE RAMS FOR DETAILS

RESTRICTED AREAS/EXCLUSION ZONES
STANDARD SITE LAYOUT

**EXAMPLES OF SIGNAGE TO BE USED
(TO BE ERRECT ON POST)**

DANGER
Overhead cables
Height limit

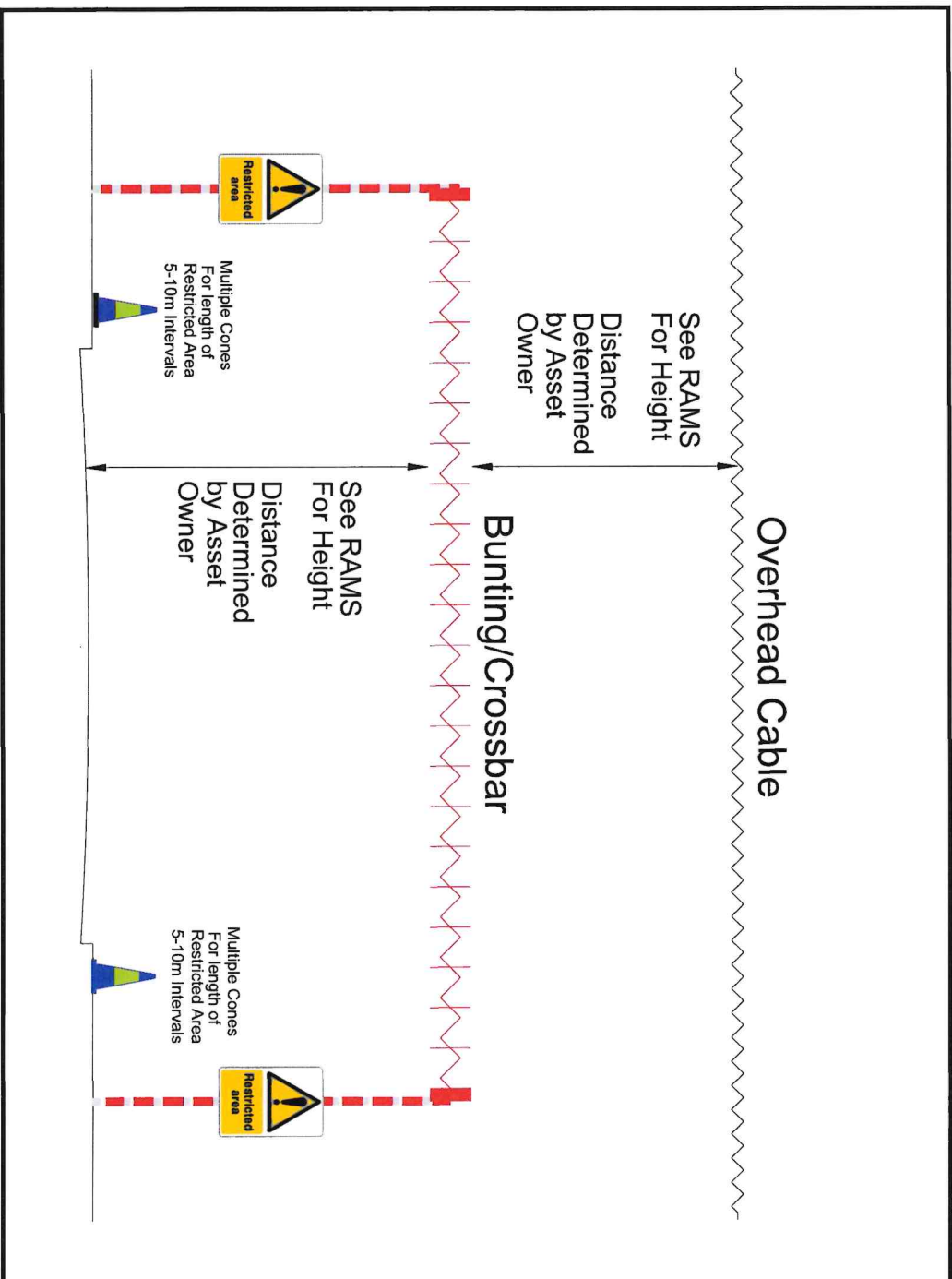
Warning
High voltage
cables underground

Caution
Gas pipe below

Note

Exclusion zones, height restrictions & restricted area distances to be dictated by asset owner.

SEE RAMS FOR DETAILS

[illegible]

Expected standard for re fuelling area set up.



Conquip water cube stabiliser being used



Site stack being utilised for drainage fittings



Petrol saw stored on drip tray ready for re fuelling.



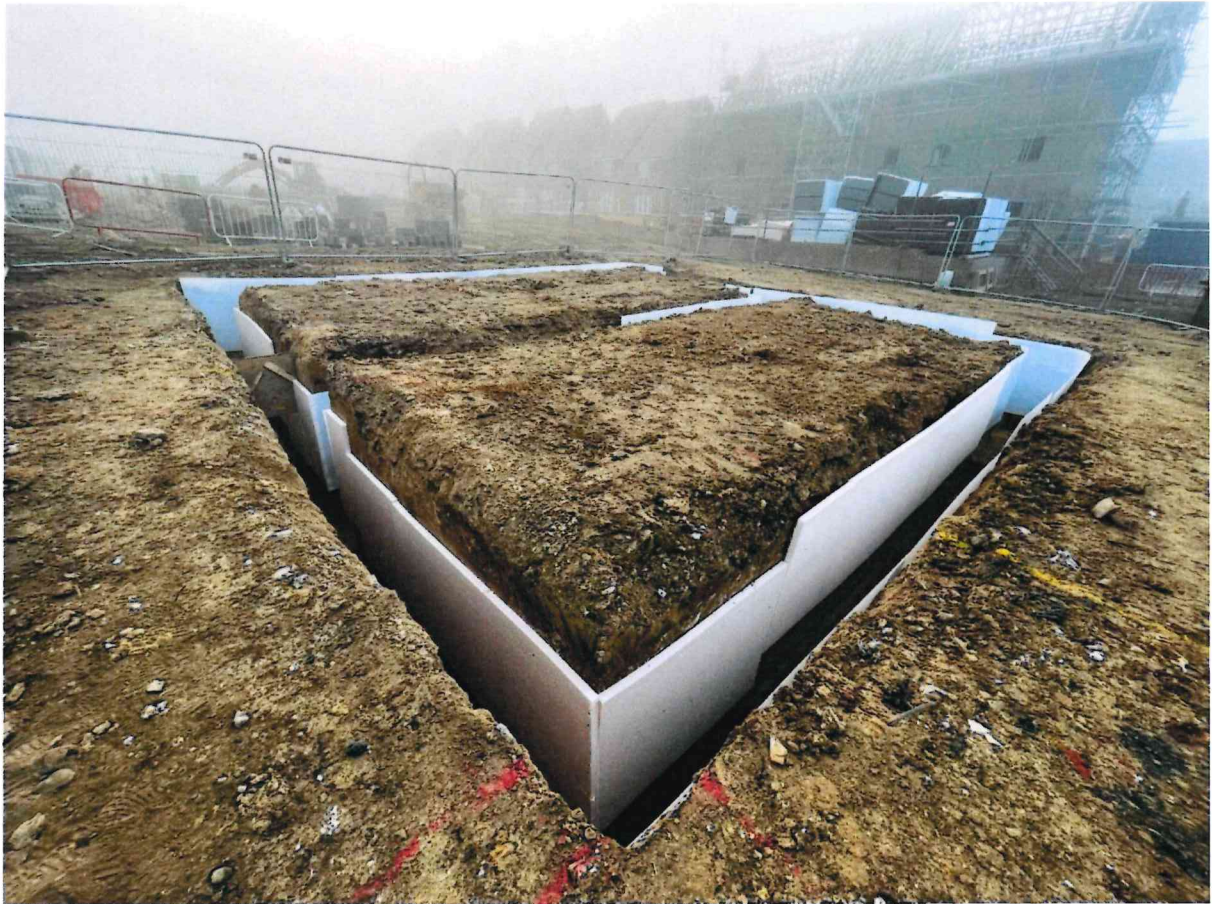


Well Presented Ground Beams

Strip Foundation



Strip Foundation



Strip Foundation



Strip Foundation





Exposing Services Using Vac EX



Orange Debris netting placed over services.



Jetwash with tow lock fitted, drip tray and spill kit present.



Tow Lock in place



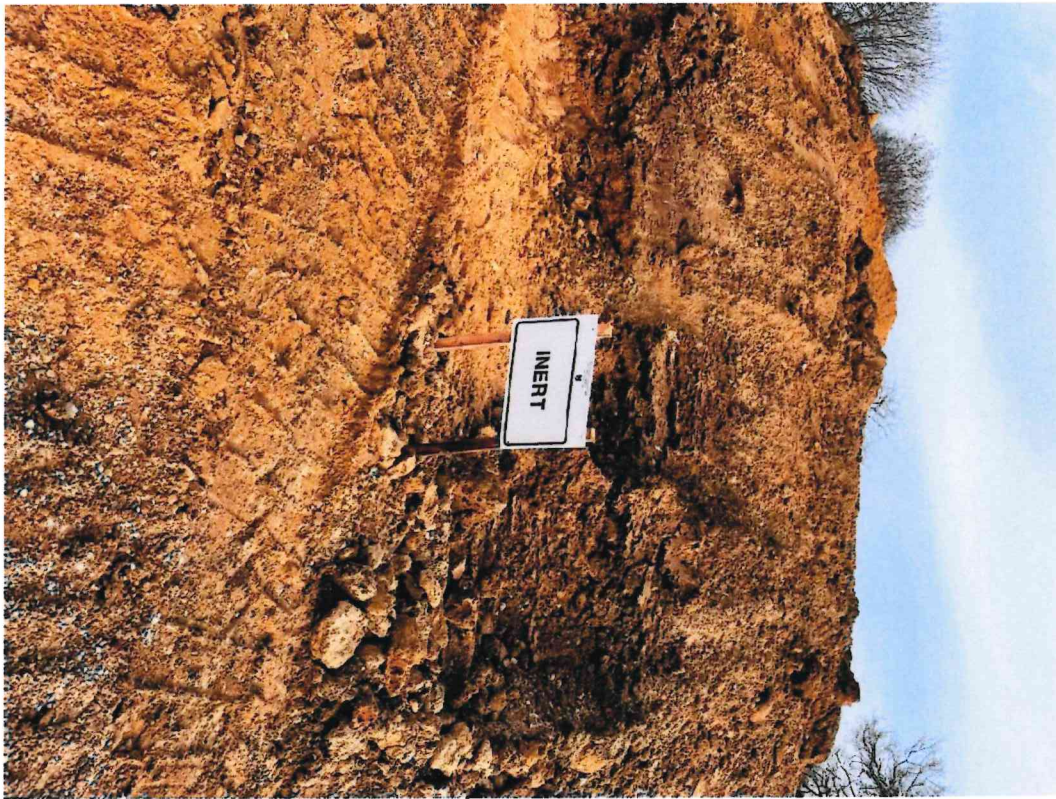
Wheel Clamp in place



Manhole Protection in place



Foundation prepared ready for Engineer to set out and Substructure Brickwork to commence



Topsoil/Soil Classification Signage in place.



Well Presented Bucket Changing Area.



Well Presented Oversite/Internal Drainage



Ramped Access to plots at Handover



COSHH Cage Set Up

HOULIHAN & CO. (EXCAVATIONS) LTD
Civil Engineering Contractors
Specialists in Roads Sewers & Groundworks

[illegible]

COSHH Register



COSHH Cage with DATA Sheets



Clear signage stating NO DUMPER ACCESS ON SPOIL HEAPS

GULLY PROTECTION IN ADDITION TO BAGS BEING INSTALLED



SCAFFOLD PLATFORMS



WALKWAYS WITH TYPE 1 AND CHAINLINK FENCING

