

Drawings not to be scaled.
 Work to figured dimensions only.
 All dimensions to be checked on site, and any
 discrepancies reported to the Architect immediately

All drawings are to be read in conjunction the
 BELLWAY Company Specification and Project
 Specifications, Company Standard Details and with the
 current Building Regulations and Codes of Practice.

It is the Contractor's responsibility to ensure that all
 works are carried out in accordance with the same.

All concrete work to be carried out in accordance with
 BS EN 1992-1-1:2004.

All brickwork and blockwork to be carried out in
 accordance with BS EN 1996-1-2:2005.

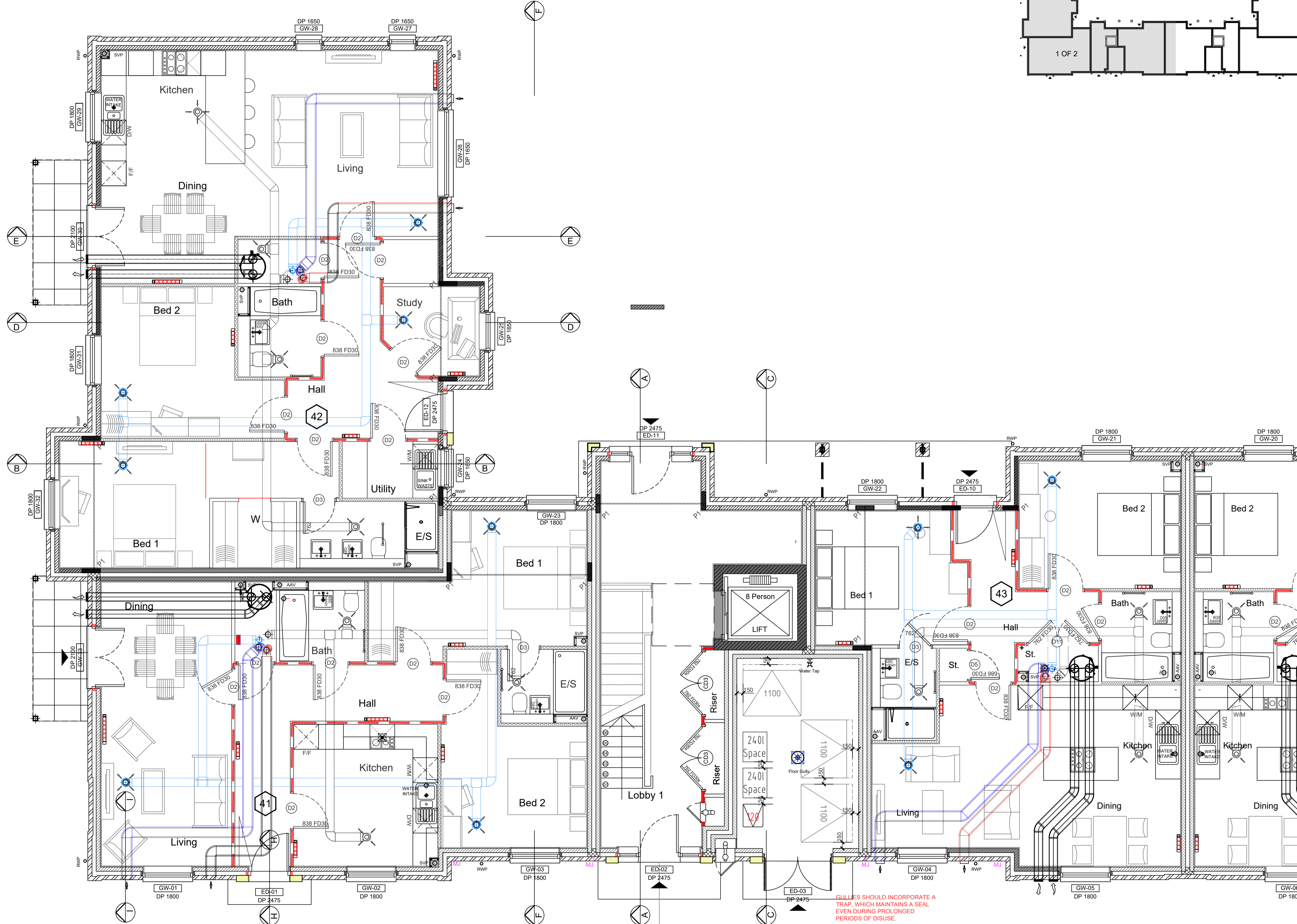
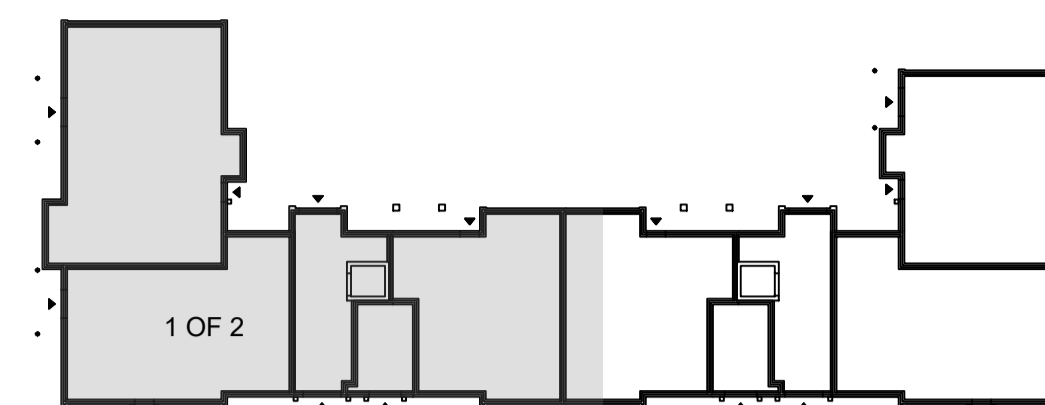
All structural steelwork to be carried out in accordance
 with BS EN 1993-1-1:2005 Steelwork to be Grade
 S275.

All structural timber to be used in accordance with BS
 EN 1995-1-1:2004 and is to be preservative treated in
 accordance with BS4072.

All plumbing to be in accordance with BS6700, BS EN
 12056, BS6465:Part 1 and BS6367.

All glass falling within critical zones as defined by Part
 N of the Building Regulations is to be toughened or
 safety glass in accordance with BS EN 12600

All building works to be undertaken in accordance with
 Robust Enhanced Accredited Details.



DP.659.246 BLOCK 1 21

WADP

ARCHITECTS

62 Well Lane
 Horsell
 Woking
 Surrey
 GU21 4PS

Telephone: 01483 763028
 e-mail info@wadp.co.uk

Bellway

REGENT'S GATE
 VIRGINIA WATER SOUTH

APARTMENTS BLOCK 1
 Ground Floor Plan
 Services
 1 OF 2

1:50 @ A1

April 2024

CD

WADP-251_BLOCK 1_ T6

REFER TO DRAWINGS: (WADP-242_BLOCK1_ FOR NOTES (WADP-242_BLOCK 1) FOR LEGEND