

- ELEVATIONS NOTES:**
- THIS DRAWING MUST NOT BE SCALED
 - THIS DRAWING IS TO BE READ IN CONJUNCTION WITH ALL OTHER PROJECT DRAWINGS
 - ALL DETAILS AND DRAWINGS MUST BE READ IN CONJUNCTION WITH THE "BELLWAY SPECIFICATION"
 - PROVIDE LEAD FLASHING, CAVITY TRAY & SOAKERS, STEPPED AS APPLICABLE, AT ALL WALL/ROOF OR CANOPY ABUTMENTS.
 - SVPs TO TERMINATE NO LESS THAN 900mm ABOVE ANY OPENING & FINISHED WITH A PERFORATED COVER.
- BED JOINT REINFORCEMENT**
- BED JOINT REINFORCEMENT - EXPAMET LADDER REINFORCEMENT
SBSF4500 AS PER STRUCTURAL ENG. DETAILS AND BELLWAY DETAILS A/S/S20/B/02
- MOVEMENTS JOINTS TO STRUCTURAL ENG DETAIL AND BELLWAY DETAILS A/S/S20/A/02&03
- LEGEND:**
- FACING BRICKWORK - COLOUR TO MATERIAL SCHEDULE
 - RECONSTRUCTED STONE PLINCH COURSE
 - FLAT GAUGED BRICK ARCH HEADER REFER TO DETAIL A/S/S40/D/01
 - FLAT GAUGED BRICK ARCH WITH BRICK KEYSTONE
 - SPLAYED RECONSTRUCTED STONE HEADER
 - SPLAYED RECONSTRUCTED STONE HEADER WITH KEYSTONE
 - RECONSTRUCTED STONE CILL REFER TO DETAIL A/SD/S40/A/01
 - RECONSTRUCTED STONE CORNER FEATURE
 - RECONSTRUCTED STONE GABLE VENT
 - RECONSTRUCTED STONE COPING
 - BLACK PVCu RAIN WATER PIPE & GUTTER
 - WALL MOUNTED GAS OR ELEC. METER REFER TO DET A/SD/S90/B/03&04&05
 - HOPPER
 - ROOF TILE - COLOUR TO MATERIAL SCHEDULE
 - WHITE PVCu FASCIA & SOFFIT
 - WHITE PVCu SCALLOPED STYLE FASCIA
 - WHITE PVCu WINDOWS
 - GRP DOOR - COLOUR TO MATERIAL SCHEDULE REFER TO DET A/SD/S40/A/06
 - GRP FLAT PORCH REFER TO DET A/SD/S100/S/01
 - GRP DORMER
 - FINIAL
 - CODE 4 LEAD FLASHING
 - CODE 4 STEPPED LEAD FLASHING TO ROOF ABUTMENT
 - SINGLE STOREY BAY WINDOW REFER TO DET A/SD/S40/E/01&02

★ SAFETY GLAZING TO BS 6206:1981
OBSCURE GLAZED WINDOW
Q PART Q COMPLIANCE
@ 85 mm STUB CILL REFER TO A/SD/S40/A/01

Q - PART Q COMPLIANCE
DOORSETS AND WINDOWS TO BE DESIGNED IN ACCORDANCE WITH PAS24:2012 OR AS DEFINED IN APPENDIX B TO COMPLY WITH APPROVED DOCUMENT PART Q: 2015.

Panel locations and numbers to be determined by Solar PV Supplier. Approx. extents of panels indicated

GROUND LEVEL INDICATIVE ONLY PLEASE REFER TO TO CIVIL ENG. DRAWINGS FOR ACTUAL LEVELS

WADP Limited Registered in England No. 4564928
Registered office: Station House, Connaught Road, Brookwood, GU24 0ER

RIBA CHARTERED PRACTICE
NUMBER 20000159

Drawings not to be scaled.
Work to figured dimensions only.
All dimensions to be checked on site, and any discrepancies reported to the Architect immediately

All drawings are to be read in conjunction the BELLWAY Company Specification and Project Specifications, Company Standard Details and with the current Building Regulations and Codes of Practice.

It is the Contractor's responsibility to ensure that all works are carried out in accordance with the same.

All concrete work to be carried out in accordance with BS EN 1992-1-1:2004.

All brickwork and blockwork to be carried out in accordance with BS EN 1996-1-2:2005.

All structural steelwork to be carried out in accordance with BS EN 1993-1-1:2005 Steelwork to be Grade S275.

All structural timber to be used in accordance with BS EN 1995-1-1:2004 and is to be preservative treated in accordance with BS4072.

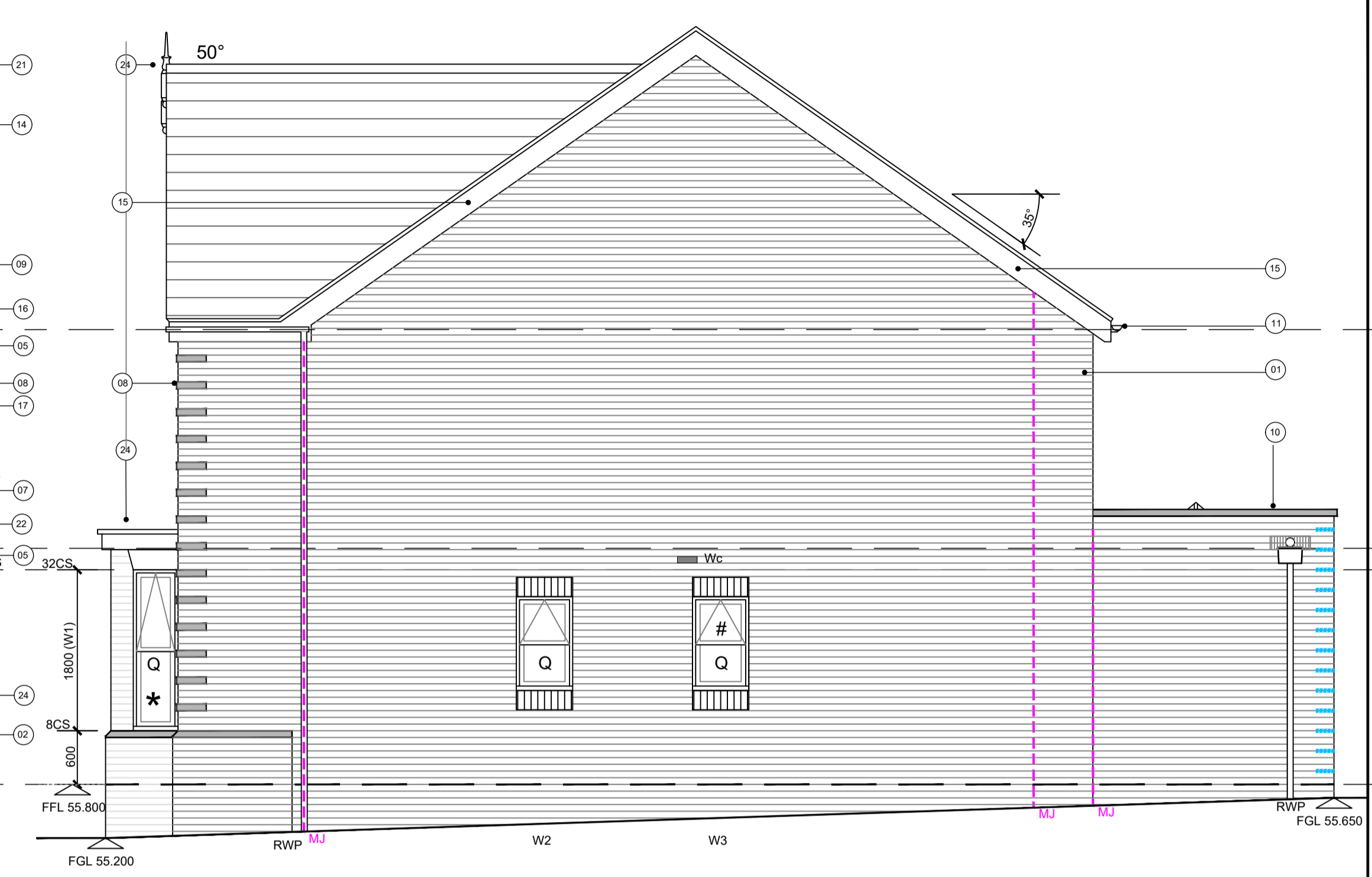
All plumbing to be in accordance with BS6700, BS EN 12056, BS6465:Part 1 and BS6367.

All glass falling within critical zones as defined by Part N of the Building Regulations is to be toughened or safety glass in accordance with BS EN 12600

All building works to be undertaken in accordance with Robust Enhanced Accredited Details.



Front Elevation Plot: 9

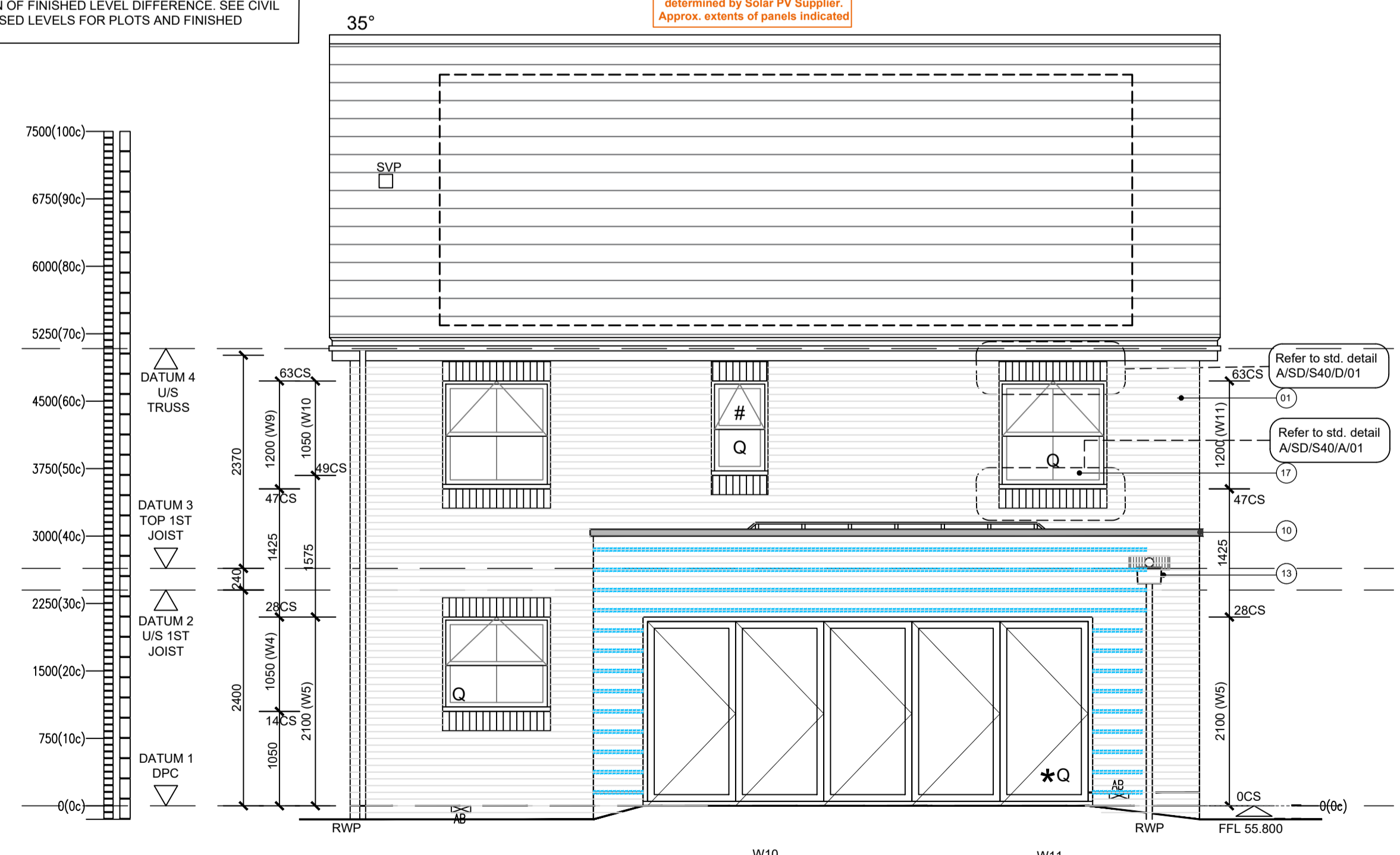


Side Elevation Plot: 9

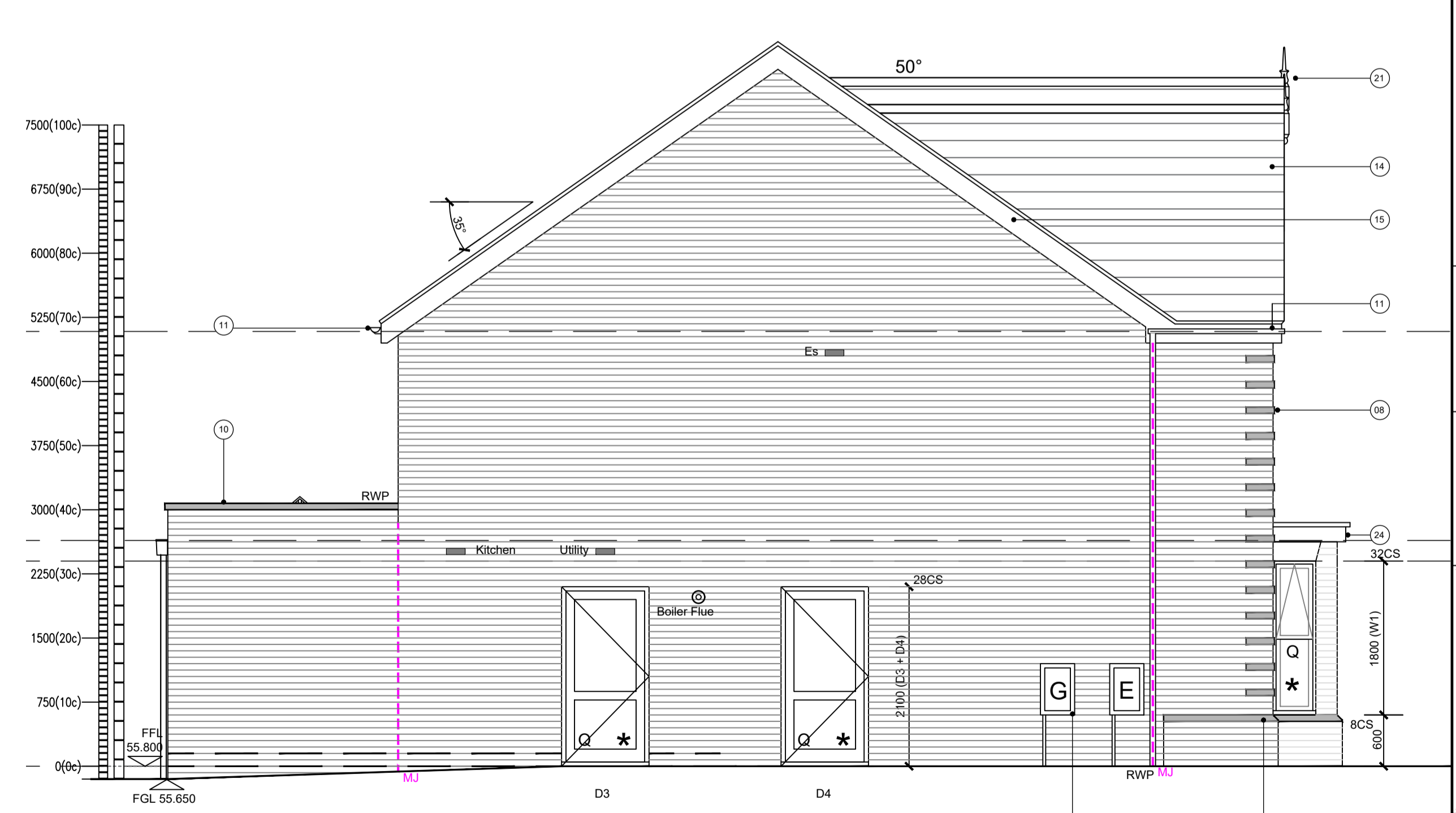
PLEASE REFER TO CIVIL ENG. DRAWING FOR TANKING AND RAISED DPC LOCATIONS - FINAL POSITION OF PROJECTING BRICK TO BE COORDINATED ON SITE.

DPC LEVEL TO GROUND LEVEL IS DIAGRAMMATIC ONLY AND SHOULD NOT BE READ AS AN ACCURATE REPRESENTATION OF FINISHED LEVEL DIFFERENCE. SEE CIVIL ENGINEERS DRAWINGS FOR PROPOSED LEVELS FOR PLOTS AND FINISHED GROUND LEVEL.

Panel locations and numbers to be determined by Solar PV Supplier. Approx. extents of panels indicated



Rear Elevation Plot: 9



Side Elevation Plot: 9

WADP

ARCHITECTS

62 Well Lane
Horsell
Woking
Surrey
GU21 4PS

Telephone: 01483 763028
e-mail info@wadp.co.uk

Bellway
www.bellway.co.uk

REGENT'S GATE
VIRGINIA WATER SOUTH

THE OAKMONT
Elevations and
Levels

1:50 @ A1 50mm @ A1

MAY 2024

DK

WADP-125_THE OAKMONT C1