

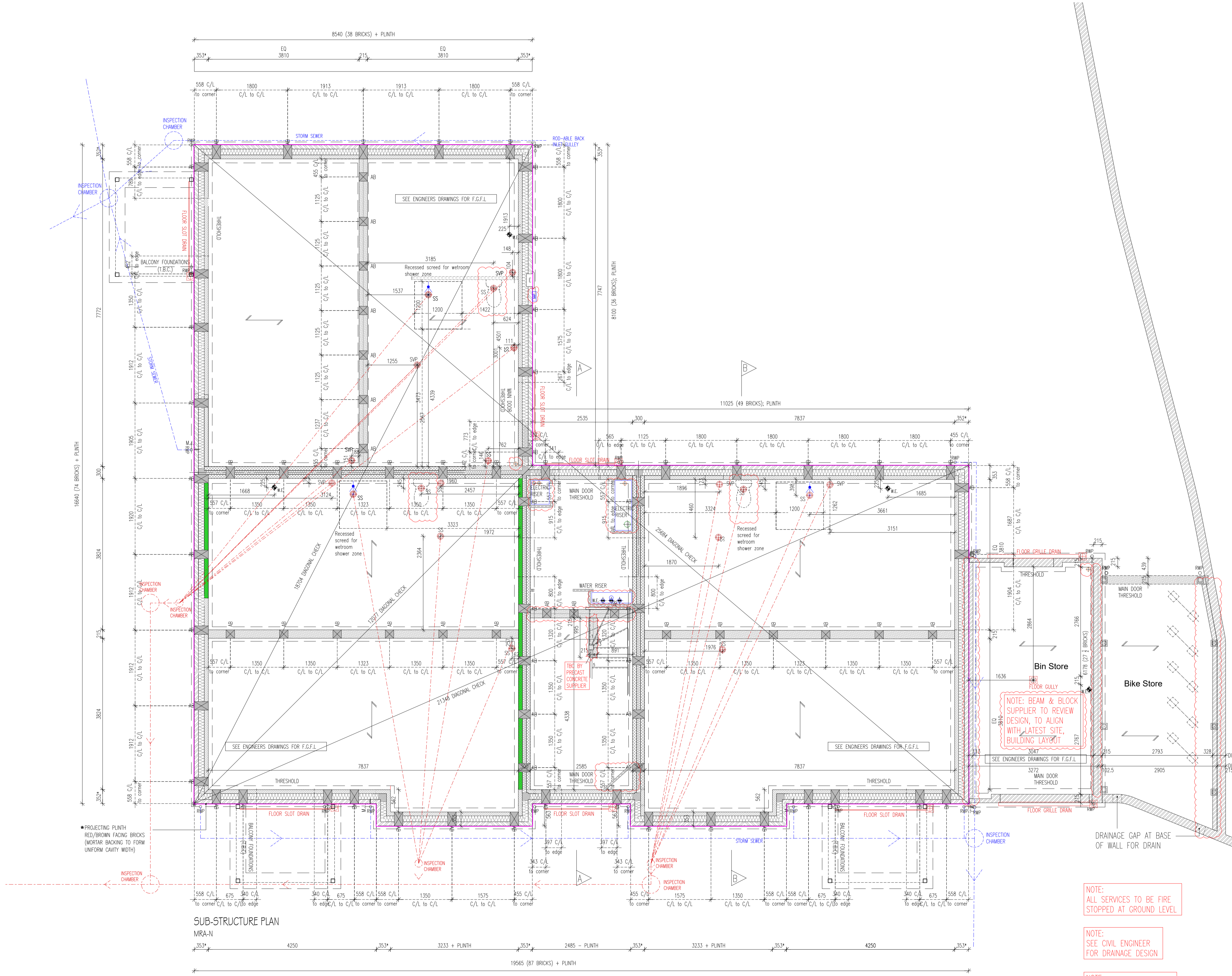
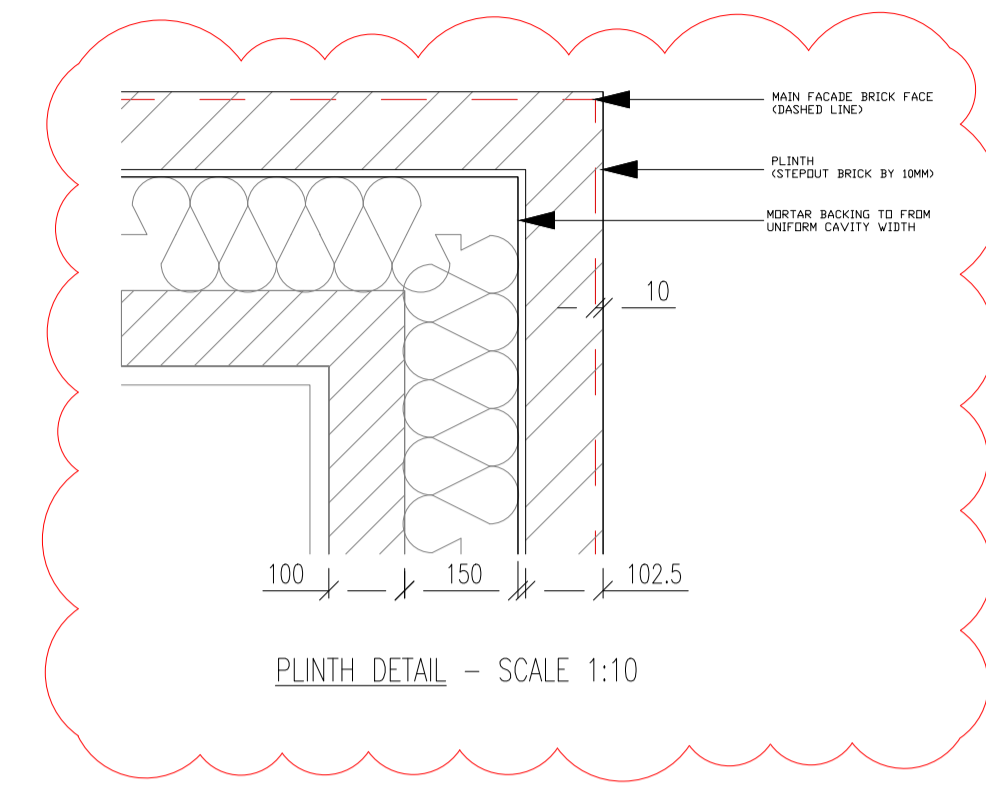
- NOTES
1. THIS DRAWING MUST NOT BE SCALED.
 2. THE DRAWING IS TO BE USED IN CONJUNCTION WITH ALL OTHER PROJECT DRAWINGS (PLAN, SECTION, ELEVATION AND SPECIFICATIONS).
 3. ALL DIMENSIONS AND FINISHES MUST BE READ IN CONJUNCTION WITH THE 'M' WORK SPECIFICATION DOCUMENT.
 4. DIMENSIONS AND FINISHES TO BE SHOWN ON SITE BY THE RELEVANT CONTRACTOR TO BE PROVIDED.
 5. ALL DIMENSIONS ARE IN MILLIMETRES AND UNLESS OTHERWISE STATED, TO FACE.
 6. DIMENSIONS ARE TO STRUCTURAL FACE UNLESS OTHERWISE STATED.
 7. DIMENSIONS TO FACE UNLESS OTHERWISE STATED.
 8. THE COPYRIGHT OF THIS DRAWING AND DESIGN IS RESERVED TO TAYLOR WIMPEY LTD.

Taylor Wimpey Health, Safety & Environmental Information

Extracted from the Significant Risk Register of the Taylor Wimpey MRAN Product Risk Assessment Document

All works must be carried out by a competent contractor working to an agreed safe system of work which reflects the controls highlighted below.

1. Safe system of work identified in the TWUK Site HSE Manual. Control risk of fall and manual handling operation when transferring loadboard from one storey to another by using a loadboard that formed in the floor or other similar approved control measures.
2. Safe system of work identified in the TWUK Site HSE Manual. Where external core drilling for foundation/production units is required, scaffolding access tower must be used and full control measures followed.
3. Due to the risk of customers falling during routine light bulb replacement, consideration must be taken to the positioning of light fittings and materials. The area point of the assessment of risk is to eliminate the risk by design.
4. Steel trapezoidal corrugated sheet piling and column heads. Ensure weight is clearly marked on all sheetwork. Ensure mechanical lifting and fixing processes are used in accordance with manufacturer's details and instructions during installation.



- SUBSTRUCTURE BLOCKWORK HATCH (MASONRY)**
- 100mm BLOCKWORK - 3.5N/mm² ARKRETE (600-800kg/m³, 0.15N/mk)
 - 100mm BLOCKWORK - 7.5N/mm² ARKRETE (600-800kg/m³, 0.15N/mk)
 - 102.5mm CLASS A TO ENG. BROOK: ENGINEERING BLOCKWORK - TO INTERNAL FACE AS PER DETAIL
 - 102.5mm CLASS B TO ENG. BROOK: ENGINEERING BLOCKWORK - FOR ACROSTIC TREATMENT SPEC. REFER TO ASSISTANT DESIGN

- INTERNAL WALLS**
- 100mm BLOCKWORK - 3.5N/mm² ARKRETE (600-800kg/m³) FOR INTERNAL LOAD BEARING WALLS
- PARTY WALLS**
- 100mm BLOCKWORK - 3.5N/mm² ARKRETE (600-800kg/m³) FOR E-M-30, REFER TO SUB SPECIFICATION.

- SUB STRUCTURE NOTES :**
1. THIS DRAWING MUST NOT BE SCALED.
 2. THIS DRAWING IS TO BE READ IN CONJUNCTION WITH ALL OTHER PROJECT DRAWINGS.
 3. ALL DETAILS AND DIMENSIONS MUST BE READ IN CONJUNCTION WITH THE 'M' NATIONAL CONSTRUCTION SPECIFICATION.
 4. BEAM AND BLOCK / RAFT FOUNDATIONS TO STRUCTURAL ENGINEER / SPECIALIST DESIGN.
 5. FOR DETAILS OF CAST IN-SITU POWERFLUTED SUSPENDED GROUND FLOOR SLABS, SEE SPECIALIST DRAWINGS.
 6. DRAIN / MASONRY CONSTRUCTION ONLY - FINISHED FLOOR LEVEL.
 7. TOP OF FINISHING SLAB, SUSPENDED SLAB AND RAFT FOUNDATION TO BE LEVEL WITH DPC (INSULATION POSITIONED UNDER SLABS).
 8. FOUNDATION MOTHS AND DEPTHS TO BE DETERMINED BY THE STRUCTURAL ENGINEER, BASED ON THE SITE INVESTIGATION REPORT / WALL FOUNDATION LOGS TO BE AGREED BY THE BUILDING CONTROL ENGINEER.
 9. INDICATES REFERENCE TO WALL NUMBER AND FOUNDATION LOGS.
 10. GAS PIPES TO RUN IN GROUND FLOOR INSULATION OR, IF INTERNAL, GASKET TYPE, WITHIN FIRST FLOOR CARCASS.

REV	DATE	DESCRIPTION OF REVISION	DRAWN	CHECKED
004	12.11.25	Slipper wall added to bin store and cycle store	MS	SN
003	06.11.25	Reference note added to slip store	SC	LE
002	31.10.25	Amended Slipper wall of Bin store and added electrical point and telecom access point near stairs	SC	LE
001	28.10.25	Slipper wall centered and rounded with SE end Supplier; Slipper wall under slip store. Services dimensioned and coordinated with Site Org and safety specs. Slippers recesses in stone block. Dimensions to walls updated. Path detail added. Slipper wall under slip store. Note for B&S Supplier added	SC	LE
102	24.08.25	Drainage received, balcony external, path, cycle and bin store amended	LE	SN

CONSTRUCTION COMPLIANT ADM Compliance Level: **M4(1/3)**

Mark Reeves Architects

1 Northfields, Prospect, Palace Bridge Road, London, SW11 1PE
T +44 (0)20 811 2434 Email: mark@markreeves.co.uk

Project No: **23/1024**

Dwg No: **MRAN - 21P2 - 11 - C04**

Project: **Grange Farm, WD**

Drawing Title: **BLOCK OF FLATS TYPE N SUB-STRUCTURE PLAN**

Rev: **?? / ?? / ?? / 11 / V?**

Scale: 1:50 @A1 Date: June 2025
Drawn By: OP Checked By: LE

Taylor Wimpey UK Ltd
One House, Temple Road, High Wycombe, Bucks HP12 3RH
Tel: +44 (0)1494 711111 Fax: +44 (0)1494 711111
www.taylorwimpey.com

NOTE: ALL SERVICES TO BE FIRE STOPPED AT GROUND LEVEL

NOTE: SEE CIVIL ENGINEER FOR DRAINAGE DESIGN

NOTE: 2ND DPC TO FULL PERIMETER SEE DETAIL: MRA-GF13-02-40 Cavity Wall Double DPC Details