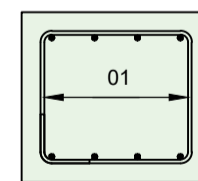
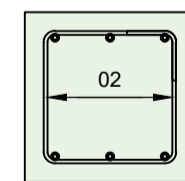


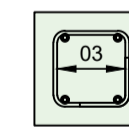
GROUND BEAM RC LAYOUT
(SCALE 1:50)



TYPICAL SECTION THROUGH
500x450mm GROUND BEAM
(SCALE 1:20)



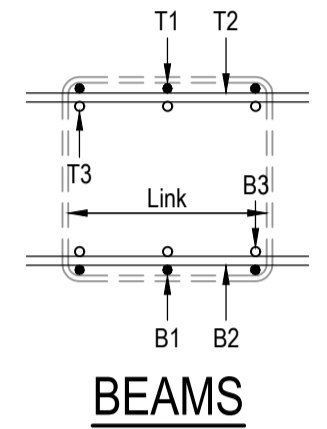
TYPICAL SECTION THROUGH
450x450mm BEAM
(SCALE 1:20)



TYPICAL SECTION THROUGH
300x300mm TIE BEAM
(SCALE 1:20)

Reinforcement Notes:

- Nominal cover to reinforcement to be :-
Top cover = 50mm (formwork shutter)
Side cover = 50mm (formwork shutter)
Bottom cover = 50mm (formwork shutter)
- Reinforcement to be high yield steel to BS 8666:2005.
- UNPROTECTED REINFORCEMENT. CARE TO BE TAKEN TO AVOID THE RISK OF FALLING ONTO AND BEING INJURED BY REINFORCEMENT.
- For details of reinforcement refer to bar bending schedules :- SA00394-4402-S-HT1-BBS Sheet 1&2.
- Target lap lengths:
H10 - 400mm - allowable; not less than 380mm
H16 - 500mm - allowable; not less than 456mm
H20 - 800mm - allowable; not less than 760mm
H25 - 1000mm - allowable; not less than 950mm
- Abbreviations
T1 - Top layer of reinforcement
T2 - Second from top layer of reinforcement
B1 - Bottom layer of reinforcement
B2 - Second from bottom layer of reinforcement.

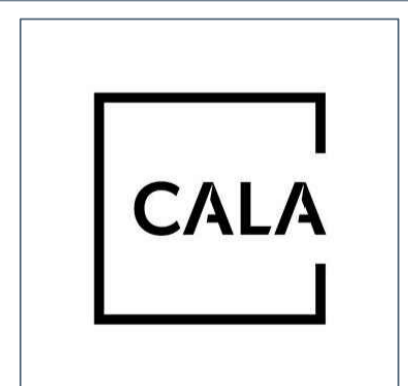


E	Lap length notes amended.	DR	AMC	24/03/25
D	Plot numbers amended	DR	GM	20/10/23
C	Issued For Construction	DR	OH	18/10/23
B	Drawing number changed	DR	OH	29/09/23
A	First issue.	DR	OH	01/09/23
REV	DESCRIPTION	SIG	CHK	DATE

CALA HOMES (THAMES) LIMITED

BROOKLANDS COLLEGE
WEYBRIDGE

HT1 PILED FOUNDATION
PLOT: 199
REINFORCEMENT LAYOUT



Eastwood
CONSULTING ENGINEERS

St Andrew's House
23 Kingfield Road
Sheffield, S11 9AS

T: 0114 255 4554
E: mail@eastwoodce.com
eastwoodce.com

ECE PROJECT No	SCALE AT A1	Drawing Status	REV
48174	1:50 1:20	CONSTRUCTION E	
Project SA00394-4401-S-HT1-RC			