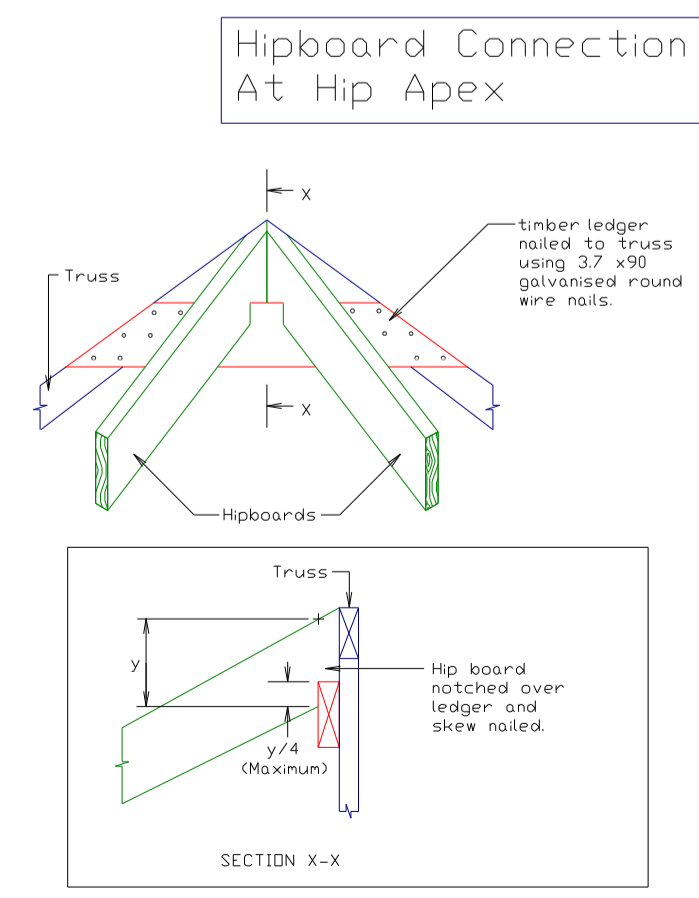
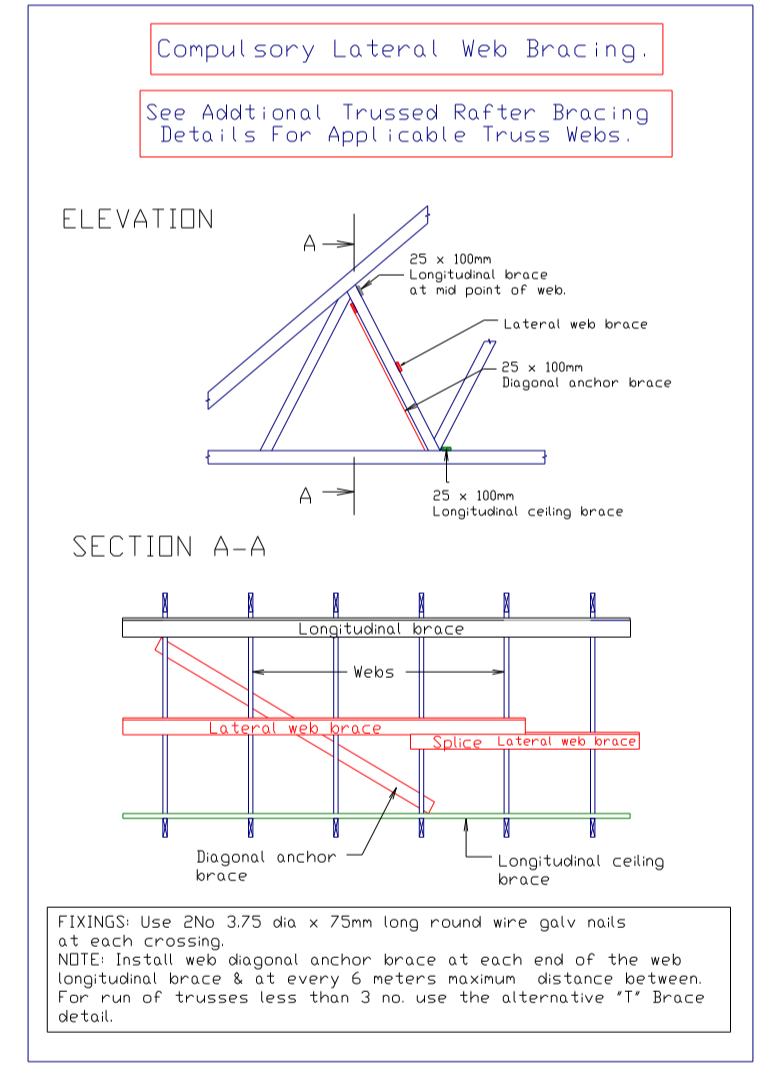
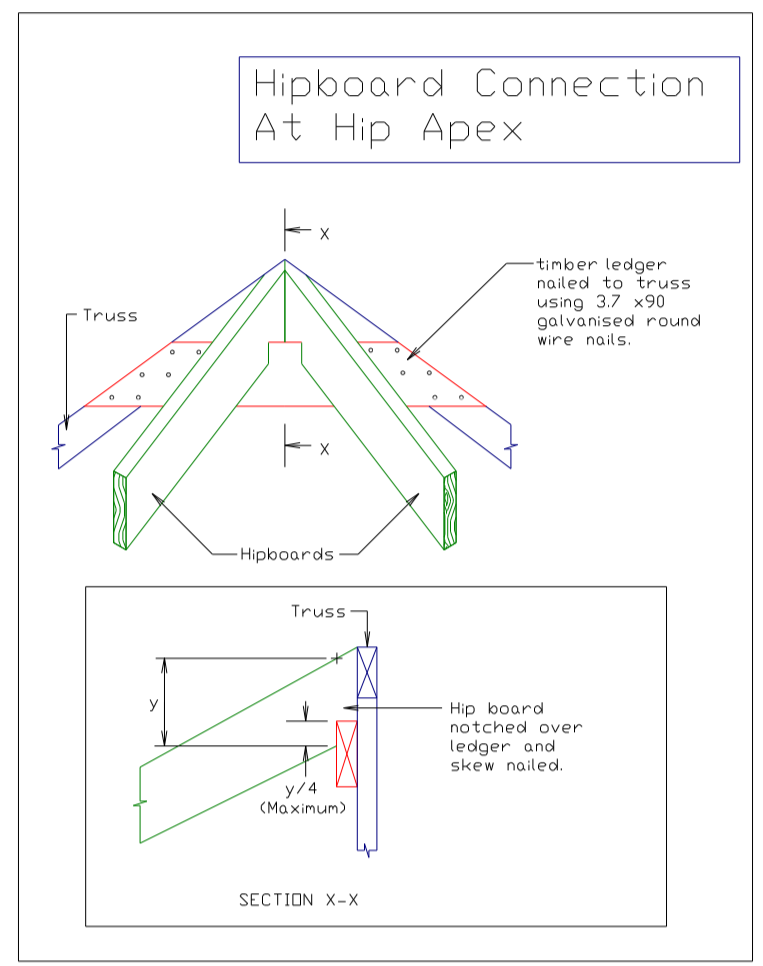
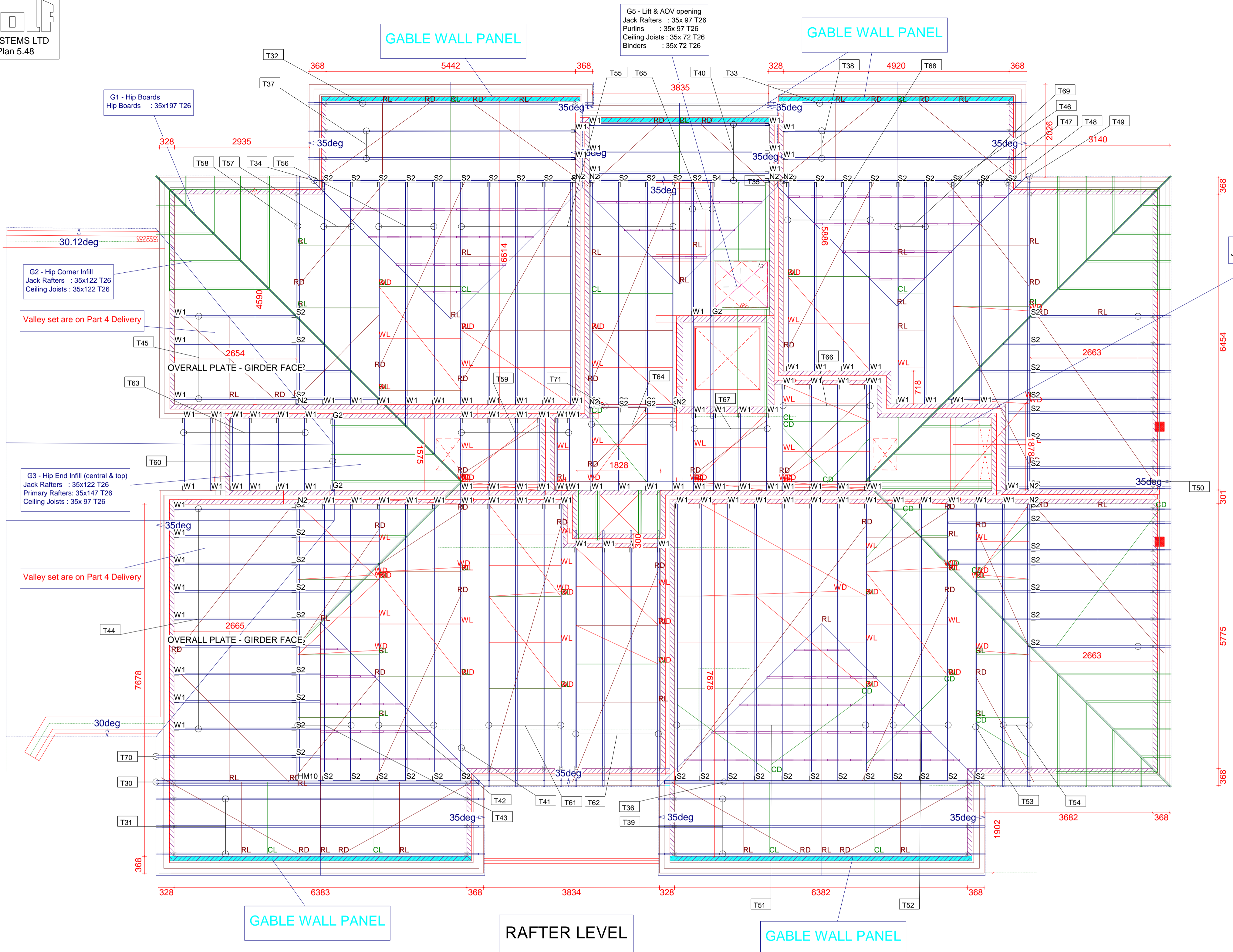


BLOCK F - (Area 3)



GENERAL NOTES:
This drawing to be read in conjunction with relevant Architect's and Engineer's details.
Truss rafters designed to BS EN1995-EC5 (UK) and generally spaced at 600mm centres. All truss rafters to be erected truly vertical and parallel.
All single trussed rafters to be fixed to wallplate using truss clips. All multiple truss rafters to be fixed to wallplate using 4 no. framing anchors.
Wallplates (Generally 50mm x 100mm TR26) to be securely fixed to brickwork and/or steel beams. Where required lateral restraint straps to be fixed at every gable and party wall. Straps to be 30mm x 5mm thick (or equivalent) galvanized steel, fixed to minimum 3 No. trusses and noggins using at least 4 no. fixings of which at least one to be in the third rafter.
All trussed rafter details to be checked and approved by client prior to manufacture.

BRACING NOTES:
Layout and bracing scheme based on PD 6693-1. The bracing scheme shown is for roof stability only and to resist the effects of wind drag on the roof surface. It is assumed that sufficient wall stability is provided by the ceiling level bracing in conjunction with the plasterboard. All braces (unless stated otherwise) to be ex 25x100mm and fixed to every truss they cross and the wallplate using minimum 2 No. 3.35mm x 65mm galvanized round wire nails (3.1 x 90mm long mechanically driven gun nails may be substituted for the 3.35 x 65mm nails). All lap joints to be side by side and over at least two trusses. Where bracing members cross each other, one brace should be stopped at adjacent trusses and an extra 25x100mm continuity provided and fixed to a minimum two trusses either side of the break. Where chevron web bracing is specified, it should be installed continuously along the line of the web, each brace should be inclined approximately 45 deg over at least three trusses. The ends of all braces to be securely anchored.

CDM NOTES:
For CDM regulations we are required by law to confirm the Client is aware of their duties under CDM and have a copy of the pre-construction information from the health and safety file concerning the design. Without this information we cannot complete a full risk assessment. In the absence of this information this drawing is issued on a preliminary basis only.

For CDM considerations and regulations:
Issued with these drawings is a set of trussed rafter component and trussed rafter roof assembly health and safety hazards which should be brought to the attention of the Principle Designer and Client for inclusion in the safety file.

HAZARD - WORKING AT HEIGHT:
We recommend the use of platforms to work from and as a last resort safety netting to restrict falls. We recommend the use boards below truss ceiling level, particularly for complex and top hat truss roofs and where extra services maybe required. Board trusses at each level of construction at the earliest possible point. Consideration should be given to reducing erection and assembly work at high level by, for example, pre-fabrication of roof sections at ground level.

TRUSSES MAY NOT BE NOTCHED, DRILLED OR CUT WITH THE EXCEPTION OF OVERHANGS, WITHOUT THE EXPRESS PERMISSION OF THE ROOF TRUSS MANUFACTURER.

STRUCTURE:
The builder must ensure suitable strength support is provided at the bearing point of all trusses and in particular girder trusses and multiple components.

GIRDER FIXING:
Principle girders are formed from multiple components, i.e. 2,3 or 4 trusses fixed together. The components are supplied to site in separate pieces for fixing in situ. Truss chords must be bolted together and all other members may be nailed. Full details of fixings, i.e. size, spacings and positions are fully detailed on the girder fixing sheets attached to delivery tickets. If extra sets are required please do not hesitate to ask.

GIRDER SHOES / TRUSS SUPPORTS:
All truss to truss or truss to timber connections must be via girder truss shoes providing a min. 75mm bearing to the trusses. Fixing of the shoes must utilise all nail holes and bolt holes as appropriate and the nails should be 30x 3.75mm square twist nails. Bolt fixings will be specified accordingly. Special support details will be shown separately as necessary.

VALLEY AREAS:
Where roof areas overlap trussed rafters the members of the lower trusses must be restrained at a maximum spacing of 400mm. Tiling battens are sufficient for this purpose.

ERECTION:
The responsibility for correct erection rests with the site supervisory personnel. The drawings supplied by Merronbrook are intended to identify the main features and principle components. It is assumed the work will be carried out and supervised by experienced and competent personnel and that exhaustive detail is not required. For further construction details and other information required please refer to the Trussed Rafter Association technical handbook site installation guide.
This is provided with the 1st delivery tickets per site and should be kept safely for reference by the site personnel.
See delivery tickets for full cutting lists of loose material supplied to complete the roof. If these lists are not adhered to, then material shortages will occur. Merronbrook take no responsibility for shortages in these circumstances.

Rev	Date	REVISIONS	Comment	Int
A	8-12-25	Updated to comments	dimensions, heel detail & loads	AH
B	20-1-26	Setting out corrected, wind post shown, general tidy		RJC
C	5-2-26	AOV trimmers added		RJC
D	2-3-26	Construction Issue		RJC

MERRONBROOK LIMITED, Hazeley Bottom, Hartley Wintney, Hook, Hants. RG27 8LX

Tel: 01252 844 747 Drawn : Rob Carter

Client: CALA Homes (Thames) Ltd

SITE : Brooklands College, Heath Road

LOADS: Tiles=765 Snow=386 N/m2

SPACING : 600mm DATE : 2-3-2026

Proj/Dwg No: H01045/Block F - Part 3

THIS INFORMATION IS SUPPLIED IN GOOD FAITH BUT WITHOUT LIABILITY. IT IS THE BUILDING DESIGNERS RESPONSIBILITY TO ENSURE THE STABILITY OF THE OVERALL STRUCTURE.

Bracing Colours
Rafter Diagonal (RD) ———
Rafter Longitudinal (RL) ———
C/Tie Diagonal (CD) ———
C/Tie Longitudinal (CL) ———
Web Diagonal (WD) ———
Web Longitudinal (WL) ———

ROOF PROFILE OUTSIDE SCOPE OF PD 6693-1 STANDARD BRACING WARNING - UNSUPPORTED WALL LENGTH > 9M

Metalwork:
TC1 48 OFF 38mm Truss Clip.
T31x6 T32x2 T33x2 T37x2 T38x2 T39x6 T50x16
T53x1 T54x1 T57x1 T61x4 T62x4 T70x1
F1 18 OFF Framing Anchor. (FAS)
T30x4 T34x2 T35x2 T36x4 T49x2 T54x2 T58x2
K12 21 OFF 38mm Mini Hanger. (KM-38)
S2 79 OFF 38mm Truss Shoe. (TS-38)
T41x1 T42x3 T43x2 T46x1 T47x1 T48x1 T51x8
T52x3 T53x1 T55x9 T56x3 T57x1 T65x1 T68x4
T69x2 T44x9 T45x4 T50x15 T55x4 T63x3 T64x1
T70x1
W1 131 OFF 39mm JHI 225. (JHI-39-225)
T37x2 T38x2 T40x6 T41x1 T42x3 T43x2 T44x9
T45x4 T46x1 T47x1 T48x1 T51x8 T52x3 T53x1
T54x1 T55x5 T56x3 T57x2 T59x12 T61x4 T62x4
T63x12 T64x4 T65x1 T66x10 T67x8 T68x4 T69x2
G2 3 OFF 75mm JHI 225. (JHI-75-225)
T65x1
N2 10 OFF 75mm RB-JHI 225 (no masonry above). (RB-JHI-75-225)
T34x1 T35x1 T40x2 T43x1 T49x1 T54x1 T58x1
T71x2
S4 1 OFF 75mm Truss Shoe. (TS-75)
T65x1
HM10 1 OFF 80mm 147 Heavy Multi Hanger. (HMH-80-147)
T43x1

Roof specification:
600mm centres
Rafter Dead load - 765 N/m2 (Tiles up to 650N/m2 + 115 N/m2 batten / felt / self-weight)
Tile type = Russell Lothian Interlocking Concrete Tiles
IN LINE PV PANELS
Snow Load 386 N/m2
Ceiling Dead load - 250N/m2
Ceiling Imposed Load - 250N/m2
Bottom Chord Live Load - 1500 N/m2
Trusses have NOT been designed to take the weight of the following items:-
GRP Chimneys, Hoist

