

SP1 - PARTY WALL PANEL

THESE WALLS MUST FINISH 450MM ABOVE TOP OF WALLPLATE

GABLE END PANEL NOT POSSIBLE DUE TO INSUFFICIENT STRAPPING

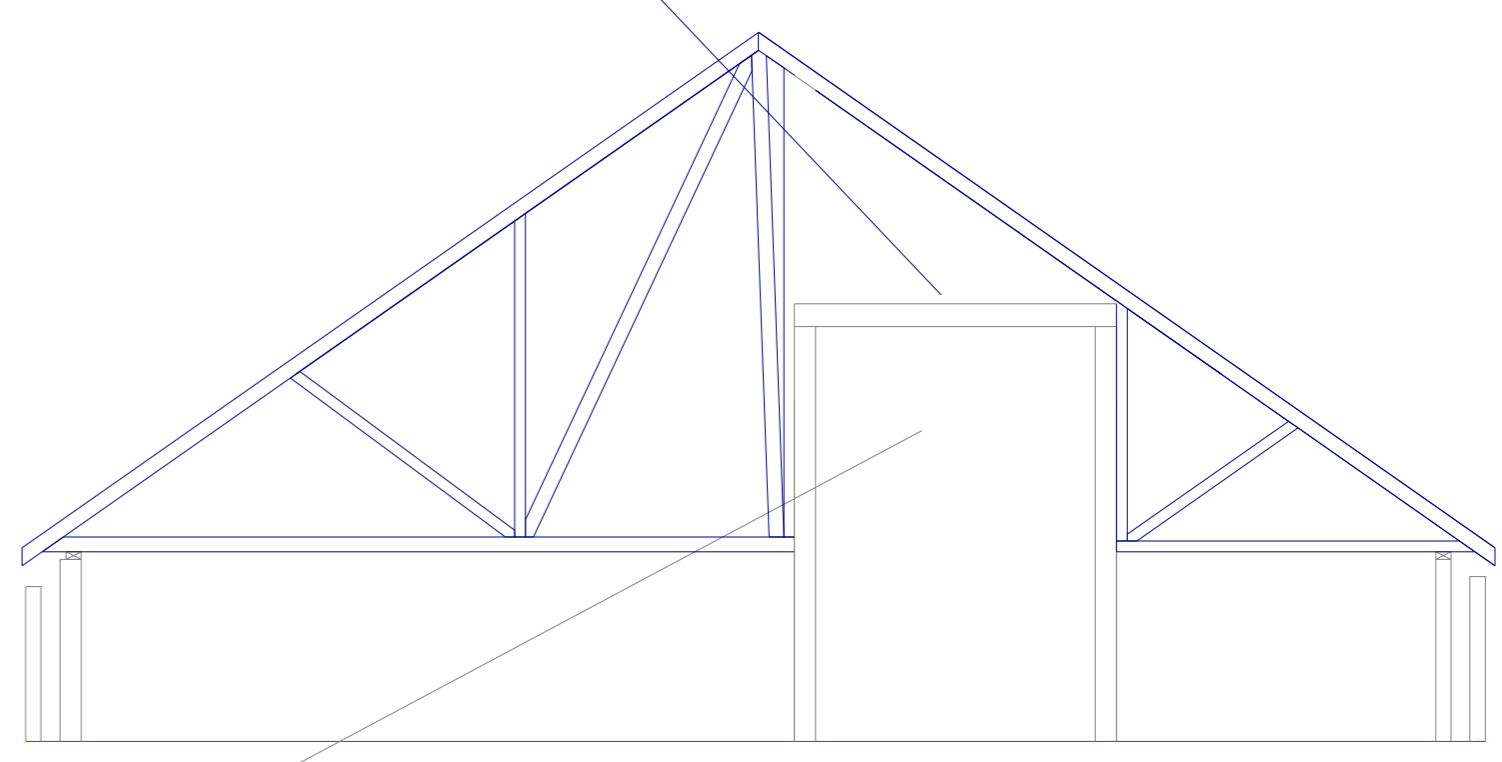
GABLE END PANEL

158mm cantilever this side

G2 - Flat Roof Rafter Jack Rafter : 47x222 T26

203x203UC60

47x197 lift over run joist at 600mm c/c fixed to wallplates with 18mm ply deck covering



- TC1 90 OFF 38mm Truss Clip.
- T8x6 T9x2 T10x1 T14x4 T17x3 T18x3 T19x9 T20x1
- T21x1 T23x3 T24x1 T25x2 T27x6 T25x2
- F1 16 OFF Framing Anchor. (FA5)
- T12x8 T26x4 T28x4
- K12 14 OFF 38mm Mini Hanger. (KM-38)
- S2 17 OFF 38mm Truss Shoe. (TS-38)
- T20x1 T21x1 T22x14 T24x1
- MHE380-39 24 OFF 39mm 380 Multi Hanger (nails < uplift). (MHE380-39-170)
- W1 85 OFF 39mm JHI 225. (JHI-39-225)
- T10x1 T11x1 T13x4 T14x4 T18x3 T19x9 T29x7
- N9 17 OFF 39mm RB-JHI 225 (no masonry above). (RB-JHI-39-225)
- T9x2 T11x1
- K13 31 OFF 50mm Mini Hanger. (KM-50)

Roof specification :

600mm centres

Rafter Dead load - 765 N/m<sup>2</sup> (Tiles up to 650N/m<sup>2</sup> + 115 N/m<sup>2</sup> batten / felt / self-weight)

Tile type = Russell Lathian Interlocking Concrete Tiles  
IN LINE PV PANELS

Snow Load 386 N/m<sup>2</sup>

Ceiling Dead load - 250N/m<sup>2</sup>

Ceiling Imposed Load - 250N/m<sup>2</sup>

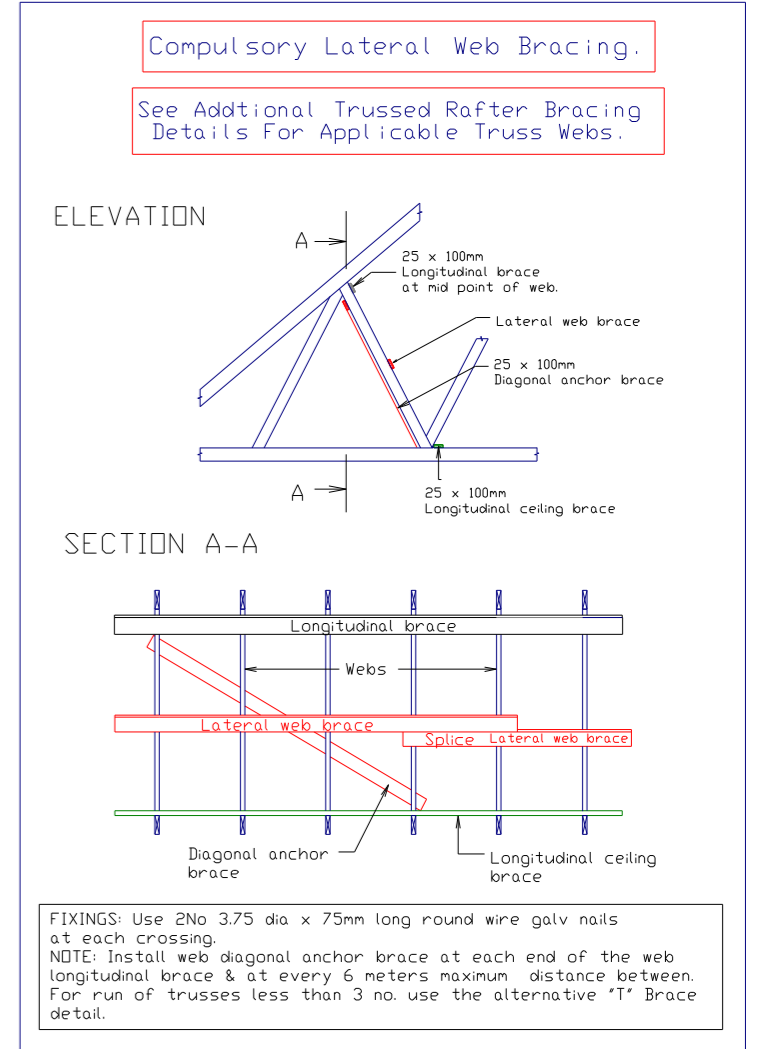
Bottom Chord Live Load - 1500 N/m<sup>2</sup>

Trusses have NOT been designed to take the weight of the following items:-

GRP Chimneys, Hoist

Bracing Colours

- Rafter Diagonal (RD)
- Rafter Longitudinal (RL)
- C/Tie Longitudinal (CL)
- Web Diagonal (WD)
- Web Longitudinal (WL)



RAFTER LEVEL