

NOTES

- KEY:**
- 02.25 Indicates proposed finished floor level.
  - ▨ 400EF Indicates area of extra facing brickwork.
  - ▨ TANK Indicates tanking.
  - ▨ GB Indicates a gravel board retaining feature. (Max Height 450.)
  - ▨ 400RW Indicates a retaining wall up to 450 high. (Max height as indicated.)
  - ▨ 550RW Indicates a retaining wall 450 to 600 high. (Max height as indicated.)
  - ▨ 850RW Indicates a retaining wall 600 to 900 high. (Max height as indicated.)
  - ▨ 1100RW Indicates a retaining wall 900 to 1200 high. (Max height as indicated.)
  - ▨ 1500RW Indicates a retaining wall 1200 to 1500 high. (Max height as indicated.)
  - ▨ 1800RW Indicates a retaining wall over 1500 high. (Max height as indicated.)
  - ▨ 150GRW Indicates a gabion retaining wall up to 450 high. (Max height as indicated.)
  - ▨ 550GRW Indicates a gabion retaining wall 450 to 600 high. (Max height as indicated.)
  - ▨ 900GRW Indicates a gabion retaining wall 600 to 900 high. (Max height as indicated.)
  - ▨ 1200GRW Indicates a gabion retaining wall 900 to 1200 high. (Max height as indicated.)
  - ▨ 1500GRW Indicates a gabion retaining wall 1200 to 1500 high. (Max height as indicated.)
  - ▨ 1800GRW Indicates a gabion retaining wall over 1500 high. (Max height as indicated.)
  - Indicative fall. (Max 1:12 unless shown otherwise.)
  - ▬ Indicates an embankment. (Max 1:3)
  - Steps Indicates steps. Steps to be in accordance with Part M requirements. Where flights of steps have three or more treads, a suitable handrail is to be provided. Flights must have a clear width of 900mm minimum. No flight to exceed 1800mm high. Landings to have a minimum length of 900mm.
  - - - Indicative land fill boundary (From GI report by Soiltechnics.)

**External works assumptions:**  
 Masonry retaining walls:  
 Standard construction details for 600, 900, 1200, 1500, 1800, etc retained height are available.  
 Foundation details within landfill areas to be confirmed by Structural Engineer.  
 Drive gradients shown are maximum gradients. Spot levels take into account top and bottom roll-overs as appropriate. Average gradient may be flatter than shown.  
 Max garden gradient beyond patio: 1:20  
 See below for continuation.

L	Plot 212 Garden gradient adjusted.	JAE	PWAH	17.04.2025
K	Layout rec'd 01.04.25 inserted.	PWAH	AMC	04.04.2025
J	Layout rec'd 10.01.25 inserted.	PWAH	AMC	19.02.2025
H	Gabion wall to rear of plots 220 - 225 shown at 1m wide. Spot levels adjusted to suit. Levels to the west of plot 216 added to provide a minimum cover above the attenuation tank.	PWAH	AMC	14.11.2024
G	Layout rec's 29.08.24 inserted.	PWAH	AMC	11.09.2024
F	Revised layout (25.07.2024) inserted. Abeyance note deleted from title block.	PWAH	AMC	31.07.2024
E	Note re abeyance list amended.	PWAH	CAT	17.04.2024
D	Minor amendments to key to clarify.	PWAH	AMC	27.03.2024
C	Revised to suit new layout.	PWAH	AC	19.02.2024
B	Road 14 vertical alignment amended. FFLs adjusted to suit. Rear gardens to plots 190 - 207 revised. Sheet key added.	PWAH	AMC	19.01.2024
A	First issue.	PWAH	AMC	08.12.2023
REV	DESCRIPTION	SIG	CHK	DATE

CALA HOMES (THAMES) LIMITED

BROOKLANDS COLLEGE  
WEYBRIDGE

EXTERNAL LEVELS SHEET 7 OF 8



**Eastwood**  
CONSULTING ENGINEERS

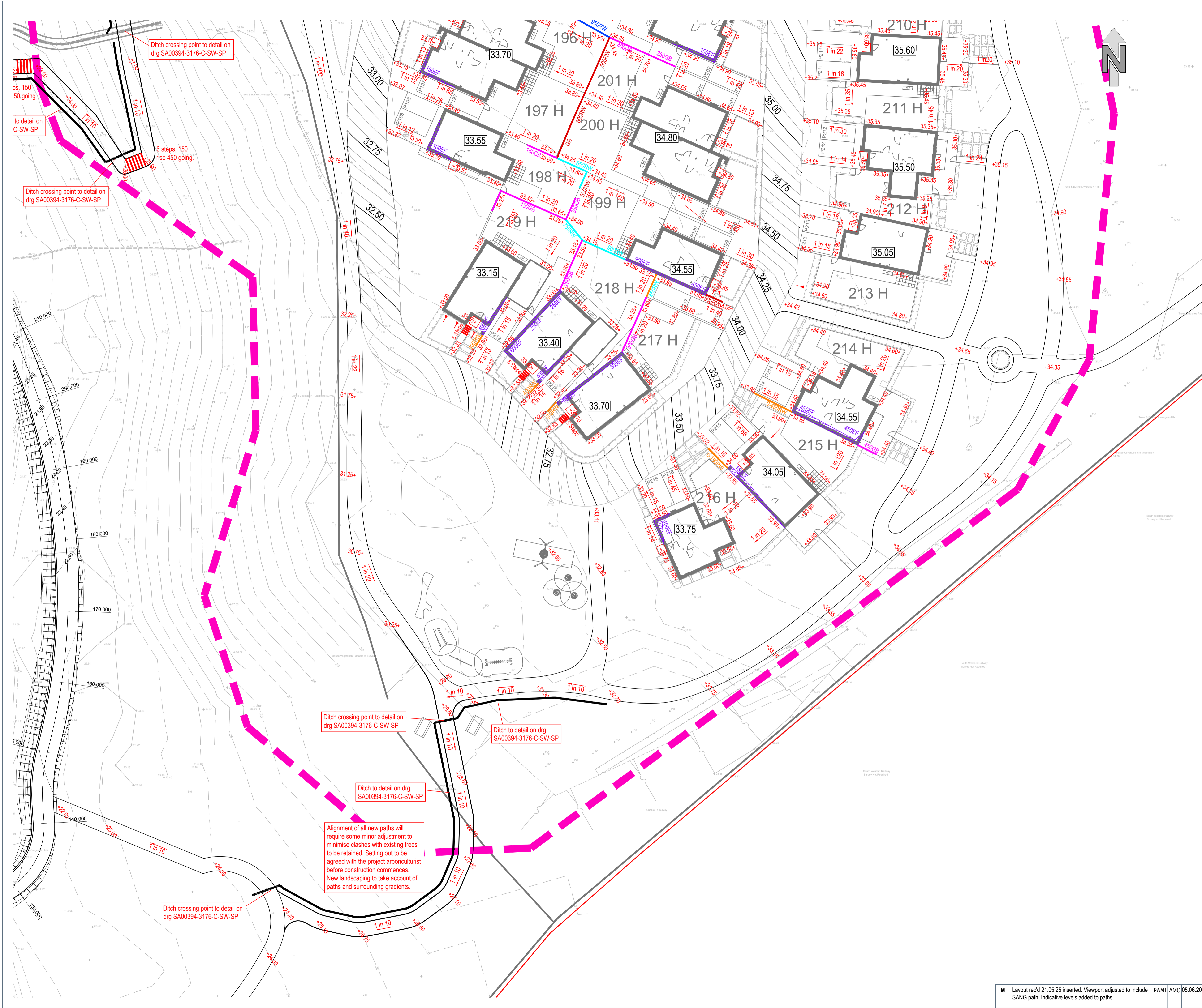
St Andrew's House  
23 Kingfield Road  
Sheffield, S11 9AS

T: 0114 255 4554  
E: mail@eastwoodce.com  
eastwoodce.com

ECE PROJECT No 48174 SCALE AT A1 Drawing Status CONSTRUCTION M REV

Project SA00394-3216-C-SW-SP

M Layout rec'd 21.05.25 inserted. Viewport adjusted to include SANG path. Indicative levels added to paths. PWAH AMC 05.06.2025



Ditch crossing point to detail on drg SA00394-3176-C-SW-SP

6 steps, 150 rise 450 going

Ditch crossing point to detail on drg SA00394-3176-C-SW-SP

Ditch crossing point to detail on drg SA00394-3176-C-SW-SP

Ditch crossing point to detail on drg SA00394-3176-C-SW-SP

Ditch crossing point to detail on drg SA00394-3176-C-SW-SP

Ditch crossing point to detail on drg SA00394-3176-C-SW-SP

Ditch to detail on drg SA00394-3176-C-SW-SP

Ditch to detail on drg SA00394-3176-C-SW-SP

Ditch crossing point to detail on drg SA00394-3176-C-SW-SP

Ditch crossing point to detail on drg SA00394-3176-C-SW-SP

Ditch to detail on drg SA00394-3176-C-SW-SP

Ditch to detail on drg SA00394-3176-C-SW-SP

Alignment of all new paths will require some minor adjustment to minimise clashes with existing trees to be retained. Setting out to be agreed with the project arboriculturist before construction commences. New landscaping to take account of paths and surrounding gradients.