

INTERMITTENT EXTRACT VENTILATION: Kitchen = 30L/S Adjacent hob; Utility = 30L/S; Bathroom = 15L/S; En-Suites = 15L/S; Clk's = 6L/S
PURGE VENTILATION: All windows to habitable rooms to open more than 30 deg's. each habitable room to be provided with an operable window(s) with an opening area equal to 1/20th of the rooms floor area.
STAIRCASE - GRD-1st
13 equal risers of 209.38mm; Going = 234mm; Pitch 41.82°; Width over strings - 860mm

ROOF VENTILATION (TYPE 1)
An impermeable roofing underlay (Type 1F / HR) is to be draped over all roof pitches, with Rytons OFV1000 (or similar approved) over fascia ventilator providing ventilation equivalent to a continuous 10mm opening at eaves level, and Glidevale Fulmetal Rediroll ventilated dry ridge system (or similar approved) providing ventilation equivalent to a continuous 5mm opening at ridge level.

Padstones and steel beam sizes as per SE Drawings

↙↘ Refer to specialist for joist sizes

GENERAL ARRANGEMENT PLANS - WALL LEGEND

	Frost resistant quality facing brickwork 20N Brickwork laid in minimum class iii (M4) mortar.
	Medium dense blockwork to outer leaf behind tie hanging / cladding
	Compressive strength 7.3N/mm² minimum class iii (M4) mortar.
	Compressive strength 3.5N/mm² minimum class iii (M4) mortar.
Note: All external wall cavities to be 125mm unless otherwise specified.	
	70mm British Gypsum Gyproframe 70S50 'C' stud system, with studs at 600mm centres. 12.5mm Gyproc Soundbloc plasterboard each side with tapered edges, finished as per internal spec. Moisture-resistant plasterboard to bathroom with studs at 400mm centres.
	70mm Butressing Wall with 12mm Ply Sheathing as per SD/3022. 12.5mm Gyproc Soundbloc plasterboard each side with tapered edges, finished as per internal spec. Moisture-resistant plasterboard to bathroom with studs at 400mm centres. 63x38mm timber studs @ max 600mm centres. 50mm Isover acoustic partition roll (APR 1200) to be installed between studwork for the entire wall panel.
	Movement Joints
	Denotes the position of the external cavity fire Soc.

IMPORTANT NOTE:  
ALL EXTERNAL WALLS TO INCORPORATE BRICKFORCE SBF30W60 BED-JOINT REINFORCEMENT TO OUTER & INNER LEAF OF BLOCKWORK 2x COURSES ABOVE & BELOW ALL OPENINGS & TO PROJECT A MIN. 600mm BEYOND OPENING.

ELECTRICAL KEY

This electrical legend is to be read in conjunction with the internal specification & M&E consultants details if applicable with any discrepancies being reported to the site manager. Doorbells, light switches, entryphones, etc. should be fixed no higher than 1200mm above FFL. TV, BT & power sockets should be fixed no lower than 450mm above FFL. All wall lights to be fitted at 2100mm above FFL.

Symbol	Description
	Flush double switch socket.
	Flush double switch socket with 2 USB points.
	External socket.
	13A flush unswitched spur.

Where switches are located all in the same wall, use 2/3/4 gang switches.

Symbol	Description
	Flush double switched socket 200mm above kitchen work top with 2 USB points
	Flush rocker light switch, 1,2 or 3 way switched.
	Ceiling rose light point.
	LED downlighter light fitting.
	Under-stair oval bulkhead wall mounted light.
	External Wall light.
	Batten holder light fitting.
	Door bell push.
	Door bell sounder.

Symbol	Description
	Flush double switched socket 200mm above kitchen work top.
	13A Flush unswitched outlet 300mm below kitchen work top.
	Flush 30A cooker switch 200mm above kitchen work top.
	Gas point.
	Shower head & control position.
	Ceiling mounted extract fan.
	Isolator switch.
	Shaver socket.

Symbol	Description
	Dual TV/ FM point 1xCT100 cabling (diplexer).
	Single slave phone socket 1xCAT 6 cabling.
	RJ45 data point
	HDMI port (4 & 5 beds only).
	Immersion heater switch, located in AC.
	Rad/Rail.
	Heating control programming switch.
	Grid switch.
	Thermostat.

Symbol	Description
	Carbon Monoxide Detector.
	Smoke Detector.
	Heat Detector.
	For sites with FTTP refer to SD/1002. For sites with FTTC refer to SD/1003.
	For full lounge plate specification refer to CALA Group Internal Specification.
	Intruder Alarm unit to Nacoss Standard
	Alarm Panel
For sites where virgin is to be provided, Virgin Media blanking plates are to be provided adjacent to the low level Lounge Plate in the lounge, and next to the TV/FM socket within the Family Room and Master Bedroom.	
	External wall mounted Electric Meter
	British Telecom Point
	Hyper Optic Point
	Underfloor Heating Manifold

Notes

All dimensions to be checked on site prior to the commencement of construction and any discrepancy should be reported to the Site Manager.

This drawing may not be reproduced in any part or form without written consent.

All copyrights reserved.

Sub-Contractors MUST ensure that they have the latest issue drawing before they commence work on site.

This drawing is to be read in conjunction with all relevant Specifications, schedules and Engineers details.

☐ EVC: Position of Electric Vehicle Charge Point

Rev	Date	Description	Init.
J	11.12.25	Stepped dpc highlighted. Grid & Program switch moved, double sockets added. Wine cooler relocated. 28.11.25 Sink amended to single bowl. DD and water amended. Sanitary ware amended as per spec, Electrics in Liv Kit/Din amended. Sitting room wall moved. Electrics amended as per. Stair amended to have a curtailed step Dims added/updated. Ref to S1 removed. Lounge plate & electric fire spur re-positioned. Store door re-positioned.	DF
I	20.01.25	Kitchen coordinated with supplier layout, M&E coordinated. Sockets coordinated	DF
H	24.09.24	Wall key amended	ZJ
G	09.08.25	Electric meter location amended. SE Note added ASHP added.	SK
F	01.07.24	RWP location amended as per Clients Comments dated 22.05.24.	SK
E	19.04.24	M&E boxing omitted & revised. M&E note added. Legend revised, details refs added. M & E boxing & and info added. rwp added for balcony drainage. Balcony details added Burglar alarm added.	SK

CALA

Job title

Brooklands College  
Weybridge

Drawing title

House Type HT6  
Bilson (Type 2)  
Plots: 209, 211, 213  
Ground Floor Plan

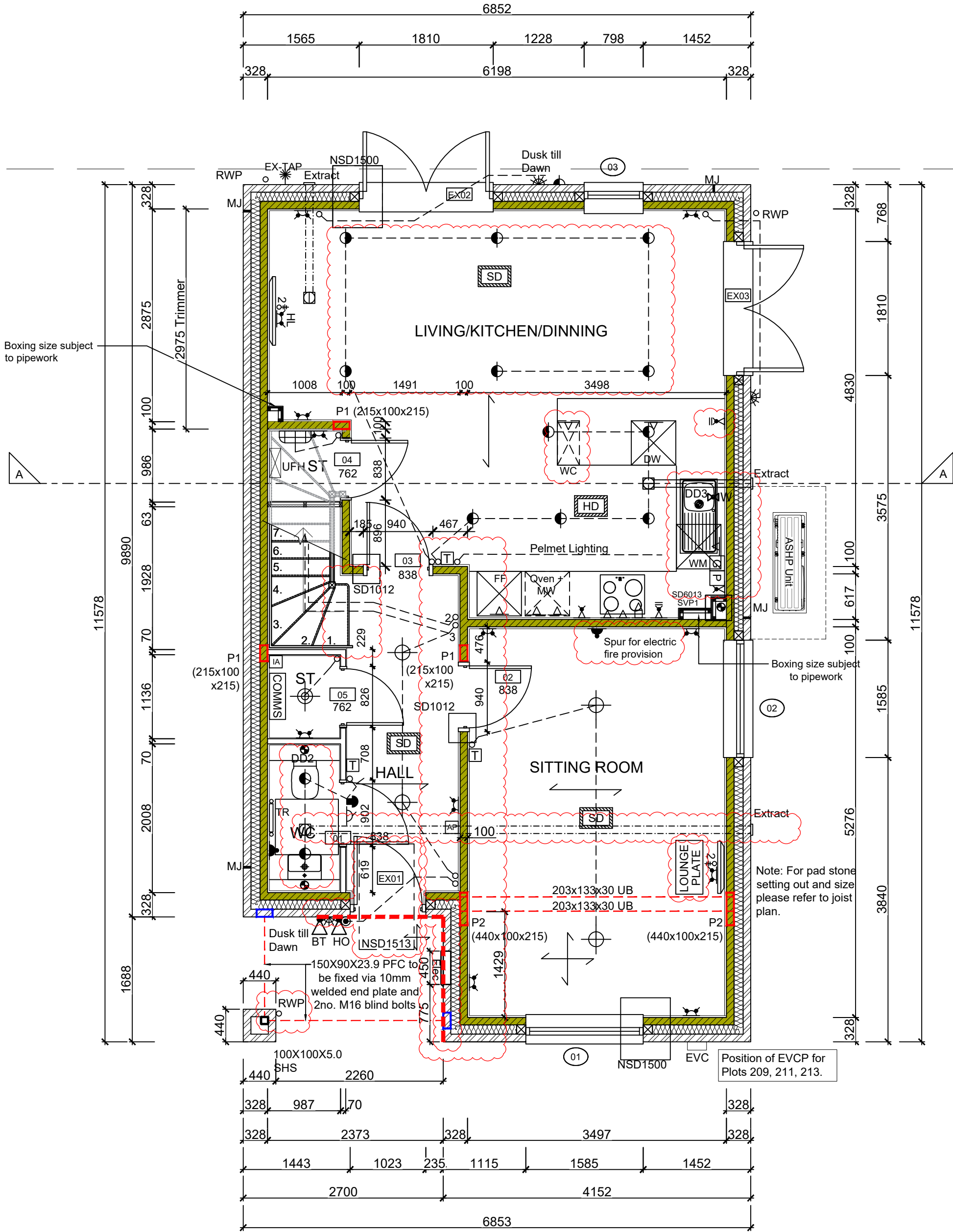
Scale 1:50 @ A1

Date May 2023

Rev. J

Drawn JM

Dwg No.  
SA00394-0050-A-HT6-GA



GROUND FLOOR LAYOUT

SCALE 1:50