

Refer to Ecology Consultants drawings for the product details of the bat and swift box

| GENERAL KEY |   |
|-------------|---|
|             | External Wall light.  |
|             | Vectaire MEV ventilation extracts                                       |
|             | Alpha ASHP intake & extracts  |
|             | Bedjoint Reinforcement (SBF35W60) @225mm vertical centres in outer leaf |
|             | Bedjoint Reinforcement (SBF35W60) @150mm vertical centres in outer leaf |

| Window Legend:    |                    |
|-------------------|--------------------|
| #                 | Egress Window      |
| *                 | Secure By design   |
| OB                | Obscure Galzing    |
| SGP               | Solid Glazed Panel |
| BB                | Bat box            |
| SB                | Swift box          |
| Elevation Legend: |                    |
| MJ                | Movement Joint     |
| WP                | Windposts          |

| Material Key |  |
|--------------|--|
| Key          | Material   |
| C01          | Stock facing brick - Type 1 - orange multi   |
| C03          | Stock facing brick - Type 3 - buff yellow  |
| C04          | Stock facing brick - Type 4 - dark grey  |
| D01          | 75mm projecting reconstituted stone surround - off-white   |
| D03          | reconstituted stone - off-white  |
| D04          | 45 degree angled brick detail formed with cut bricks - colour to match facing brick                  |
| D05          | Stepped brick detail - to match facing brick   |
| D07          | Polychromatic brick pattern - contrasting dark grey brick headers in facing brickwork                |
| M01          | Window frame - RAL 7015  |
| M02          | Double glazed panel with glazed front and solid back - RAL 7015                                      |
| M03          | Glazed balcony door - RAL 7015   |
| M05          | Glazed entrance door with sidelight and fanlight - RAL 7015  |
| M08          | Ancillary area door - RAL 7015   |
| M19          | Louvred door - RAL 7015  |
| M25          | Rainwater goods - dark grey  |
| M26          | Fascia board - RAL 7015  |
| M30          | Recessed balcony with metal balustrade and handrail formed with 50mm x 10mm metal flats - RAL 7015   |
| M31          | Projecting balcony with metal balustrade and handrail formed with 50mm x 10mm metal flats - RAL 7015 |
| M36          | Powder coated aluminium coping with fall to inside - RAL 7015  |
| R01          | Slate effect plain tile - grey   |

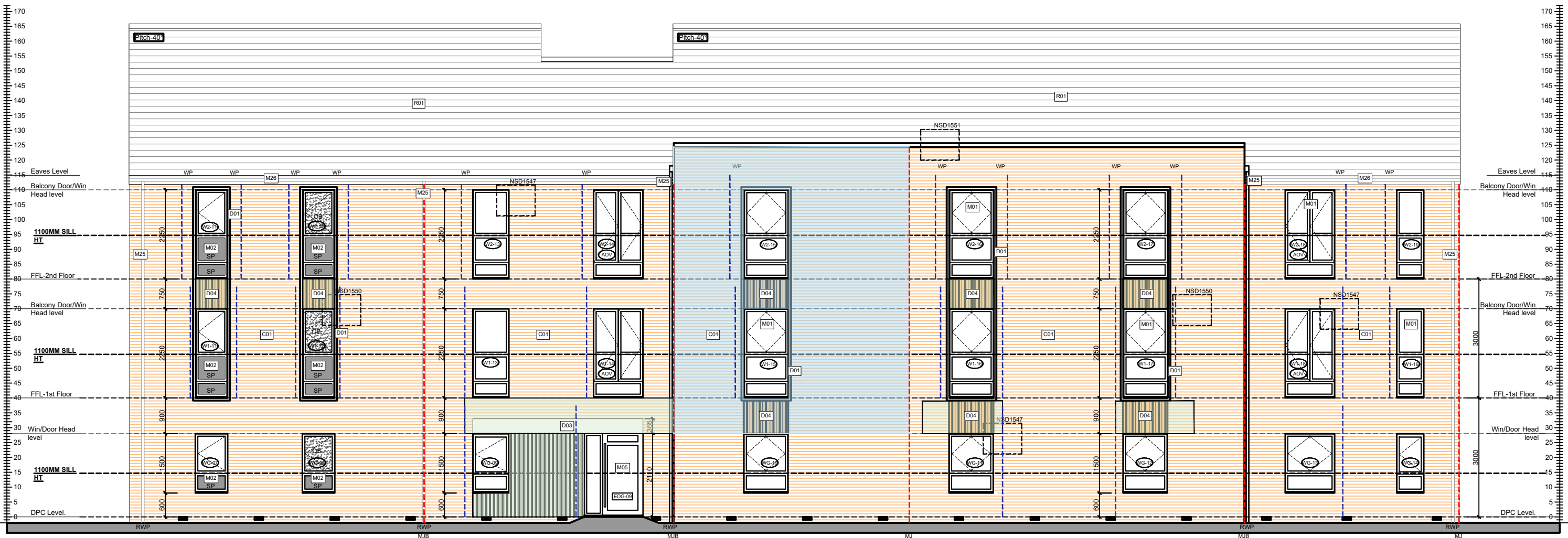
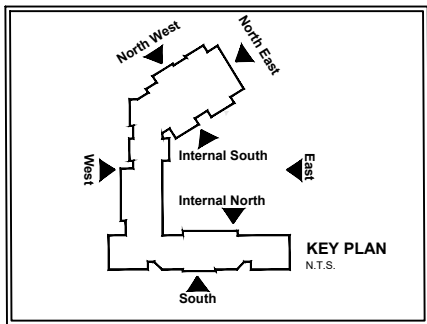
Notes  
All dimensions to be checked on site prior to the commencement of construction and any discrepancy should be reported to the Site Manager.

This drawing may not be reproduced in any part or form without written consent.

All copyrights reserved.

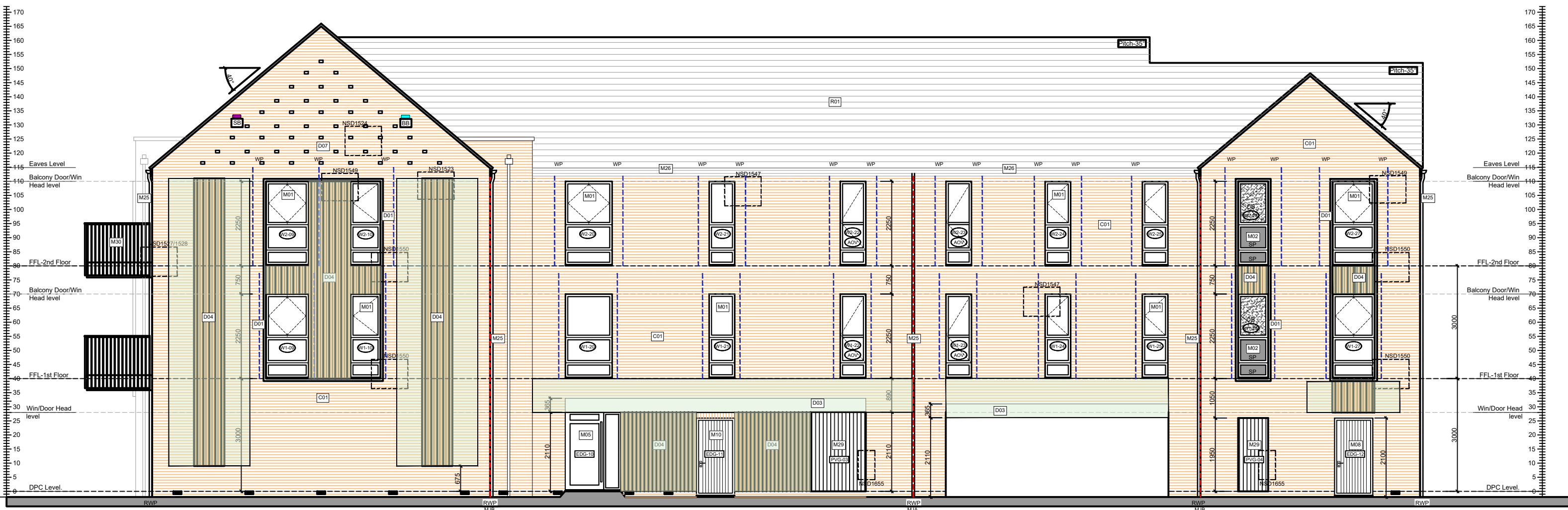
Sub-Contractors MUST ensure that they have the latest issue drawing before they commence work on site.

This drawing is to be read in conjunction with all relevant Specifications, schedules and Engineers details.



## Internal North Elevation

SCALE 1:100  
SP: Spandrel Panel



## East Elevation

SCALE 1:100  
SP: Spandrel Panel

| Rev | Date     | Description  | Init. |
|-----|----------|--|-------|
| Q   | 23.10.25 | Updated vehicle entrance height  | ZJ    |
| P   | 10.10.25 | Updated roof eaves & rainwater gutter to be in accordance with Client instruction dated 29.08.25 | DF    |
|     |          | Updated balcony railing as manufacturer drawings.  |       |
|     |          | Added bed joint reinforcement as Engineers dwg dated 24.07.25, windposts & extracts updated.     |       |
|     |          | Parking court door height increased to 2250mm.   |       |
|     |          | Ventilation extracts co-ordinated.   |       |
| O   | 16.05.25 | Vent grill height updated  | ZJ    |
| N   | 22.04.25 | Door head & threshold lowered on bin/cycle car park areas, AOVs added                            | ZJ    |
| M   | 13.03.25 | Extracts coordinated with Alpha & Vectaire drawings  | SK    |
| L   | 20.01.25 | Brick colour added, additional material tags added   | DF    |
| K   | 07.01.25 | Stone surround windows amended   | ZJ    |
| J   | 12.12.24 | Windposts added to Legend.   | CL    |



Job title  
**Brooklands College  
Weybridge**

Drawing title  
**Block F  
Plots: 122 - 153  
North West & North East Elevation  
Sheet 3**

|       |            |       |          |
|-------|------------|-------|----------|
| Scale | 1:100 @ A1 | Date  | Nov 2023 |
| Rev.  | Q          | Drawn | JM       |

Dwg No.  
**SA00394-0353-A-FTF-ELE**