

INTERMITTENT EXTRACT VENTILATION: Kitchen = 30L/S Adjacent hob; Utility = 30L/S; Bathroom = 15L/S; En-Suites = 15L/S; Clk's = 6L/S
PURGE VENTILATION: All windows to habitable rooms to open more than 30 deg's. each habitable room to be provided with an operable window(s) with an opening area equal to 1/20th of the rooms floor area.
STAIRCASE - GRD-1st
13 equal risers of 209.38mm; Going = 234mm; Pitch 41.82°; Width over strings - 860mm
ROOF VENTILATION (TYPE 1) An impermeable roofing underlay (Type 1F / HR) is to be draped over all roof pitches, with Rytons OFV1000 (or similar approved) over fascia ventilator providing ventilation equivalent to a continuous 10mm opening at eaves level, and Glidevale Fulmetal Rediroll ventilated dry ridge system (or similar approved) providing ventilation equivalent to a continuous 5mm opening at ridge level.

GENERAL ARRANGEMENT PLANS - WALL LEGEND

	Frost resistant quality facing brickwork 20N Brickwork laid in minimum class iii (M4) mortar.
	Medium dense blockwork to outer leaf behind tile hanging / cladding
	Compressive strength 7.3N/mm² minimum class iii (M4) mortar.
	Compressive strength 3.5N/mm² minimum class iii (M4) mortar.
	Note: All external wall cavities to be 125mm unless otherwise specified.
	70mm British Gypsum Gypframe 70S50 'C' stud system, with studs at 600mm centres. 12.5mm Gyproc Soundbloc plasterboard each side with tapered edges, finished as per internal spec. Moisture-resistant plasterboard to bathroom with studs at 400mm centres.
	70mm Butressing Wall with 12mm Ply Sheathing as per SD/3022. 12.5mm Gyproc Soundbloc plasterboard each side with tapered edges, finished as per internal spec. Moisture-resistant plasterboard to bathroom with studs at 400mm centres.
	63x38mm timber studs @ max 600mm centres. 50mm Isover acoustic partition roll (APR 1200) to be installed between studwork for the entire wall panel.
	Movement Joints
	Denotes the position of the external cavity fire sock.
	Dashed line indicates extent of secondary DPC stepped up to accommodate level threshold to front door.

**IMPORTANT NOTE:**  
ALL EXTERNAL WALLS TO INCORPORATE BRICKFORCE SBF30W60 BED-JOINT REINFORCEMENT TO OUTER & INNER LEAF 2x COURSES ABOVE & BELOW ALL OPENINGS & TO PROJECT A MIN. 600mm BEYOND OPENING.

ELECTRICAL KEY

Symbol	Description
	Flush double switch socket.
	Flush double switch socket with 2 USB points.
	External socket.
	13A flush unswitched spur.

Where switches are located all in the same wall, use 2/3/4 gang switches.

Symbol	Description
	Flush double switched socket 200mm above kitchen work top with 2 USB points.
	Flush rocker light switch, 1,2 or 3 way switched.
	Ceiling rose light point.
	LED downlighter light fitting.
	Under-stair oval bulkhead wall mounted light.
	External Wall light.
	Batten holder light fitting.
	Door bell push.
	Door bell sounder.

Symbol	Description
	Flush double switched socket 200mm above kitchen work top.
	13A Flush unswitched outlet 300mm below kitchen work top.
	Flush 30A cooker switch 200mm above kitchen work top.
	Gas point.
	Shower head & control position.
	Ceiling mounted extract fan.
	Isolator switch.
	Shaver socket.

Symbol	Description
	Dual TV/ FM point 1xCT100 cabling (diplexer).
	Single slave phone socket 1xCAT 6 cabling.
	RJ45 data point
	HDMI port (4 & 5 beds only)
	Immersion heater switch, located in AC.
	Rad/Rail.
	Heating control programming switch.
	Grid switch.
	Thermostat.

Symbol	Description
	Carbon Monoxide Detector.
	Smoke Detector.
	Heat Detector.
	For sites with FTTP refer to SD/1002. For sites with FTTC refer to SD/1003.
	For full lounge plate specification refer to CALA Group Internal Specification.
	Intruder Alarm unit to Nacoss Standard
	Alarm Panel

For sites where virgin is to be provided, Virgin Media blanking plates are to be provided adjacent to the low level Lounge Plate in the lounge, and next to the TV/FM socket within the Family Room and Master Bedroom.

	Pop up Socket for the Island
	External wall mounted Electric Meter
	British Telecom Point
	Hyper Optic Point
	Underfloor Heating Manifold

LOFT SPACE ELEC KEY

Symbol	Description
	Batten holder light fitting.
	Flush double switch socket.
	Smoke Detector within loft space.
	Switch with Neon indicator

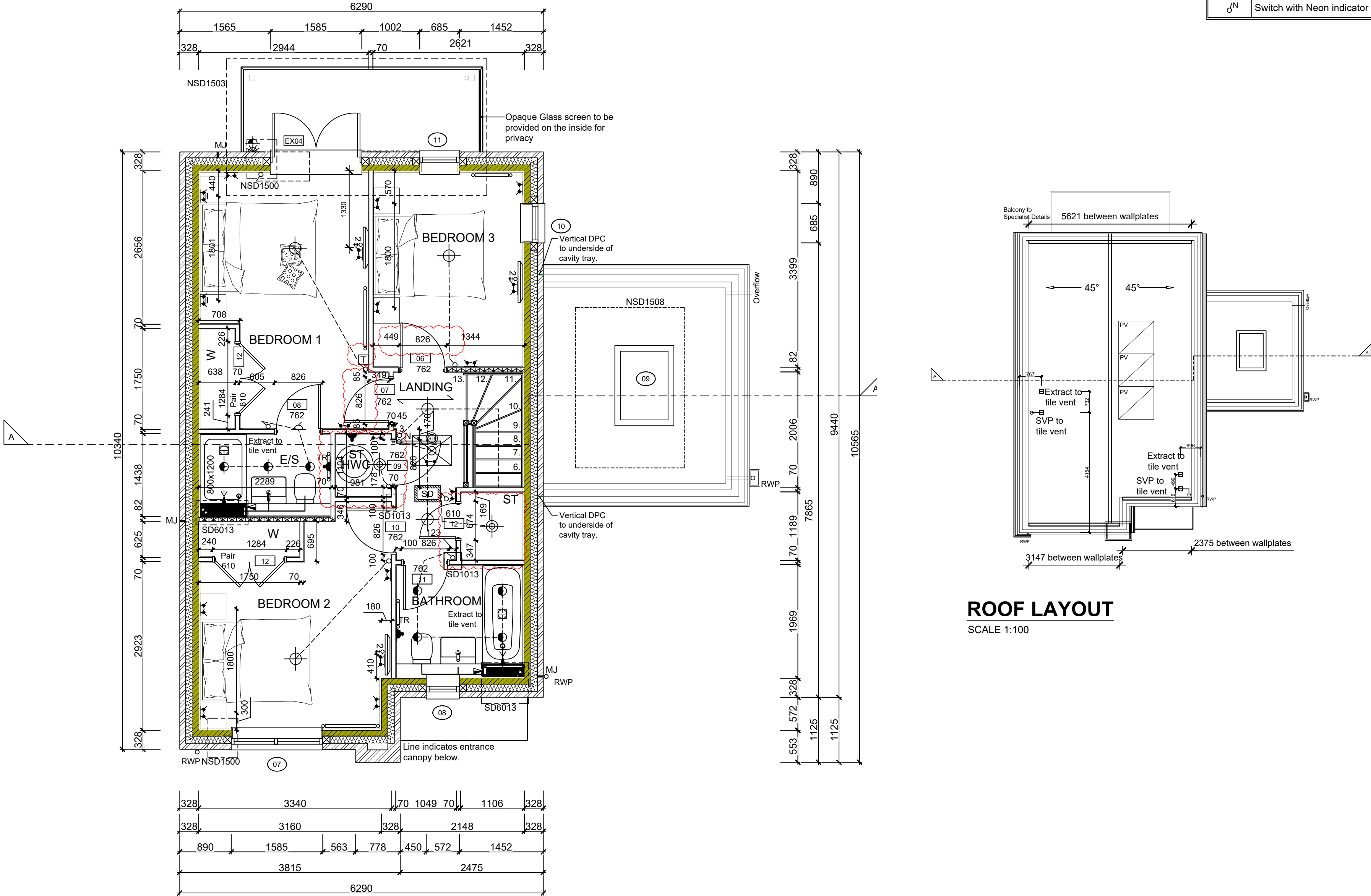
Notes  
All dimensions to be checked on site prior to the commencement of construction and any discrepancy should be reported to the Site Manager.

This drawing may not be reproduced in any part or form without written consent.

All copyrights reserved.

Sub-Contractors MUST ensure that they have the latest issue drawing before they commence work on site.

This drawing is to be read in conjunction with all relevant Specifications, schedules and Engineers details.



FIRST FLOOR LAYOUT  
SCALE 1:50

ROOF LAYOUT  
SCALE 1:100

M	17.11.25	Dimensions added/adjusted. Store size updated to allow for 100mm door ribs. Doors re-positioned.	CL
		Thermostat relocated to bed 1.	
L	18.07.25	Thermostat relocated. TV moved dims added. Basin updated as per spec.	SK
		Sanitary ware amended as per spec. Stair amended	
		Builders wardrobe added to Bed2. TV centered to wall	
K	27.01.25	SD added to Loft hatch. SD legend added.	SK
		PV panels added to roof plan.	
J	20.01.25	M&E coordinated. Sockets coordinated	DF
I	19.09.24	Chimney width revised. Wall key amended	GC
H	14.08.24	SE note added. Secondary outlet added.	SK
G	01.07.24	RWP location amended as per Clients Comments dated 22.05.24.M&E note added.	SK
F	19.06.24	Door Leaf Size changed to 762mm.	YS
E	19.04.24	Legend revised, details refs added. Wardrobes omitted from bed 3. Privacy screen note added.	
		Thermostat added on landing	
D	16.02.24	CONSTRUCTION ISSUE	SK
		MJS added. Butress Wall added as per SE Drawings.	
		HWC added as per M&E. Door 12 size amended.	
C	14.12.23	Revised as per Clients comments (01.11.23).Legend amended. Light switch position to stores revised.	SK
		GA co-ordinated with M&E consultant drawings for Heating, Domestic & Ventilation services.	
B	13.10.23	Construction Issue	JM
		Drawing no. revised. M&E note added.	
A	01.09.23	Preliminary Issue	JM
Rev	Date	Description	Init.

CALA

Job title  
Brooklands College  
Weybridge

Drawing title  
House Type HT7  
3B5P Plots: 188  
First Floor &  
Roof Plan

Scale	1:50/1:100 @ A1	Date	May 2023
Rev.	M	Drawn	JM

Dwg No.  
SA00394-0057-A-HT7-GA