

Drawing Legend (Where Applicable)

▶ Joist Start Layout Point ▶ Poly Start Layout Point

⊗ All Closure Blocks Must Be Bedded

⊗ Void Vent Position - see Architects plans for cross venting

⊕ Service Hole Position

150mm Floor Joists At 588mm Centres Unless Otherwise Stated (Poly)

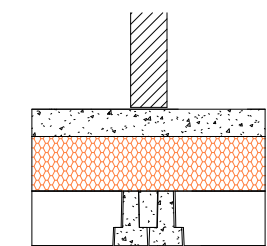
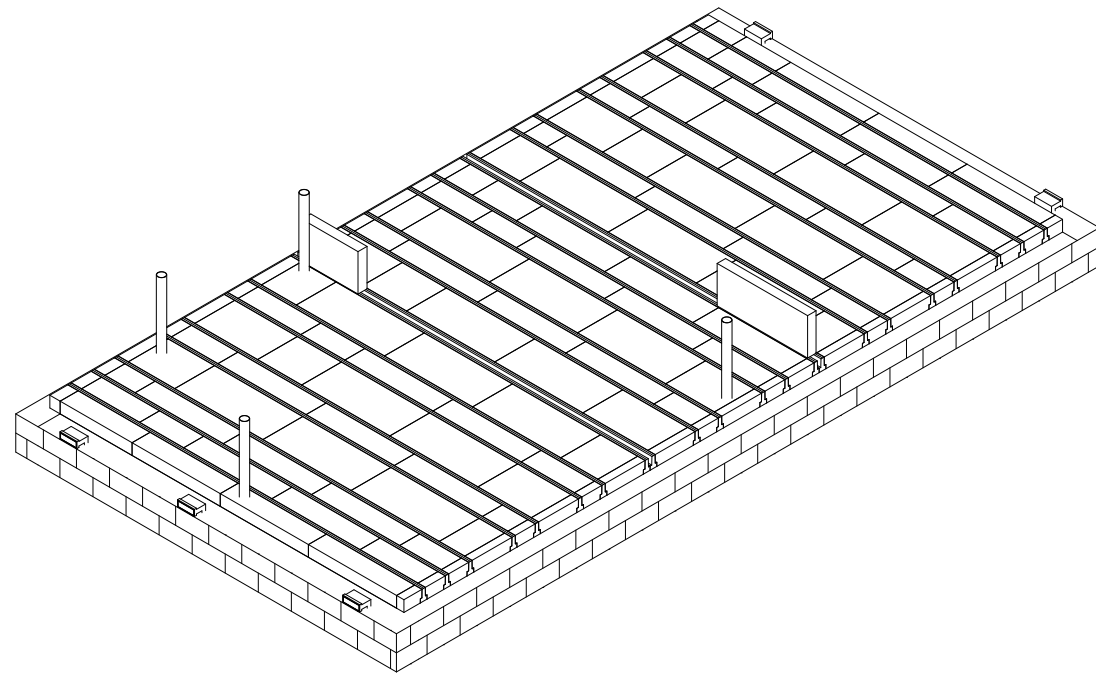
318 150mm Floor Joists With 270mm Poly Panel Between (Poly)

Beam weight = 24kg/m Manufactured in 25mm Increments

Yellow Oversheet not required on these bays (if oversheet design)

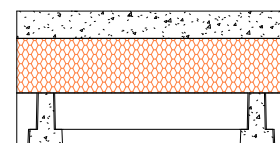
All Internal load bearing walls must be built through before topping is applied. Additional shuttering may be required.

Green hatched Non loadbearing walls can be filled with poly (hatched).



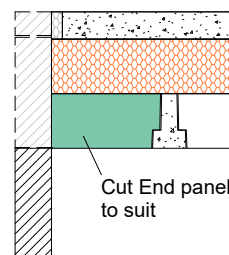
Two beams with grouted solid directly below partition

SECTION FWX

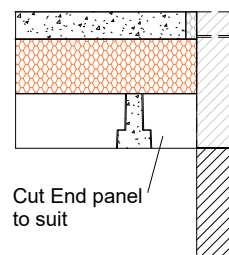


Cut Row - Max 398mm Centres
Do not use OverSheet for cut row

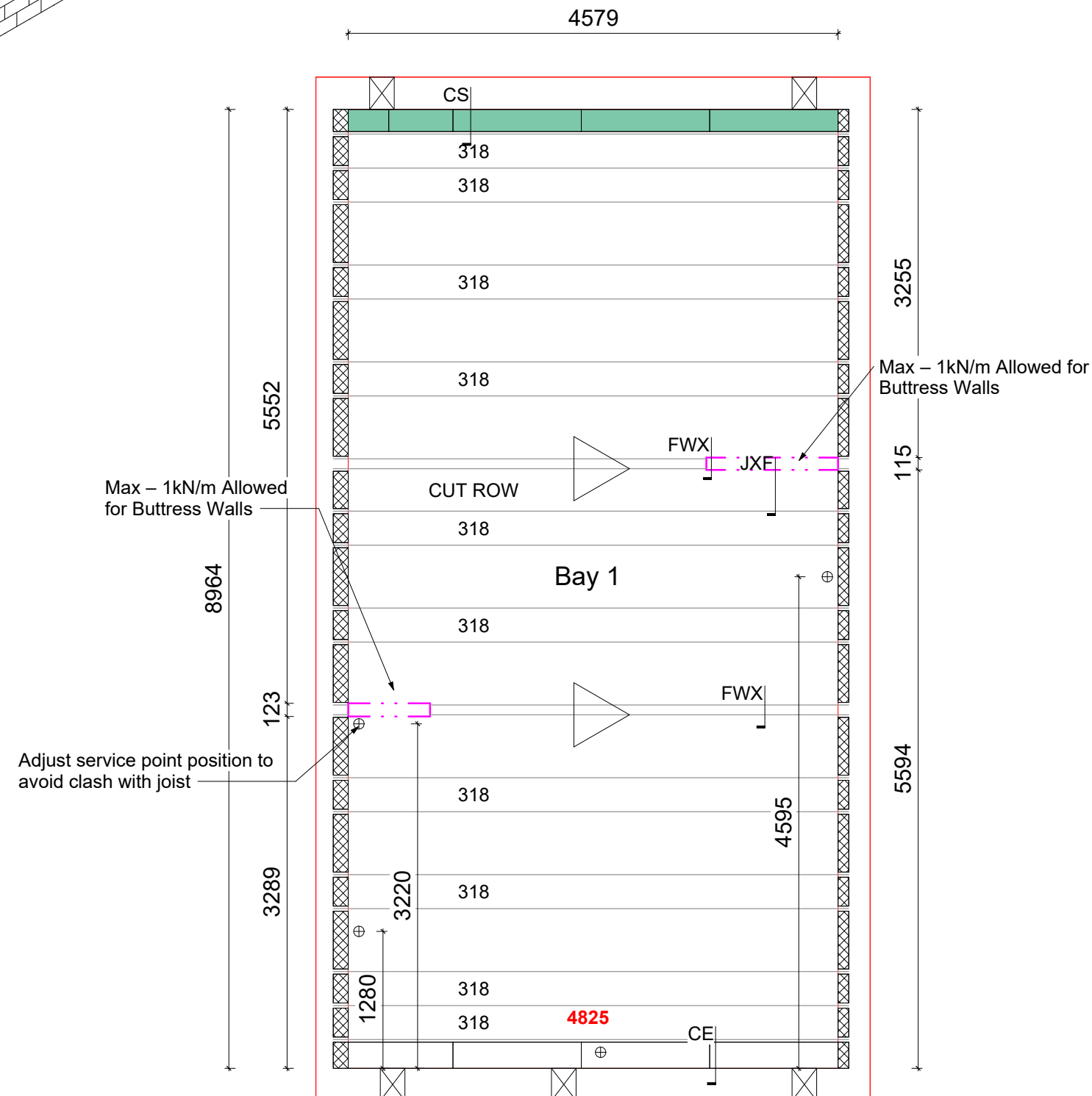
SECTION JXF



SECTION CS



SECTION CE



DESIGN CRITERIA

Design does not allow for Underfloor Heating Systems to be installed within the floor, please contact CUBE6 to discuss options.

PARTITIONS - 0.5kN/m² Non Load Bearing Stud

FINISHES - 1.725kN/m² 75mm Structural Topping

OTHER INFILLS - EPS Panel

Imposed Loads KN/m2

Bay	Imposed Load	Partition Type
1	1.5	Stud Partition

Ancillaries Schedule - With Panels

Prod. Code	Description	Count
ANC-OS15WF	OS15 540mm Infill Panel (White)	31
ANC-OS15WH	OS15 270mm Infill Panel (White)	39
ANC-OS15WS	OS15 300mm End Panel (White)	8
ANC-OSWC	OS 100mm Cut Panel (White)	4
ANC-PES75P	75mm Poly Edge Strip (Platinum)	25
ANC-140LCB	140mm Large Closure Block - 7.3N	10
ANC-140SCB	140mm Small Closure Block - 7.3N	10
ANC-LCB	100mm Large Closure Block - 7.3N	10
ANC-SCB	100mm Small Closure Block - 7.3N	10
ANC-AB3	1201 Air Brick	5
ANC-UV	1201 Telescopic Vent - 5-7 Courses	5

Beam Schedule

Description	Wires	Length	Bay No	Qty
150mm Floor Joist	4	4825	1	22

Product - W150 Panel combined with P150mm Oversheet

THERMAL VALUES

PERIMETER/AREA VALUE - 0.441

TARGET U VALUE - 0.12 ACTUAL U VALUE - 0.12

b	amended to latest Timber Frame drawings	EH	30/05/24
a	Plots amended	EH	18/04/24
REV	DESCRIPTION	INI	DATE

TOTAL LENGTHS AND AREA

150mm - Length	Oversheets	Internal Floor Area
106.150 m	14.3 no. OS150P	41 m ²

HOUSE TYPE

Thetford End

SITE

Places For People, Phase 3, Fairbridge Way,
Burgess Hill, West Sussex, RH15 8BF



PRECAST CONCRETE FLOORING

PRODUCT

DRAWN BY
evie@cube6.co.uk

DATE
26/10/2023

DRG No
231550-6-W150P

b