

Drawing Legend (Where Applicable)

▶ Joist Start Layout Point    ▶ Poly Start Layout Point

⊗ All Closure Blocks Must Be Bedded

⊗ Void Vent Position - see Architects plans for cross venting

⊕ Service Hole Position

150mm Floor Joists At 588mm Centres Unless Otherwise Stated (Poly)

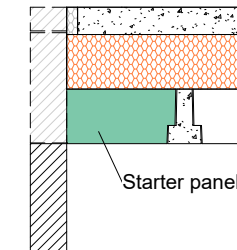
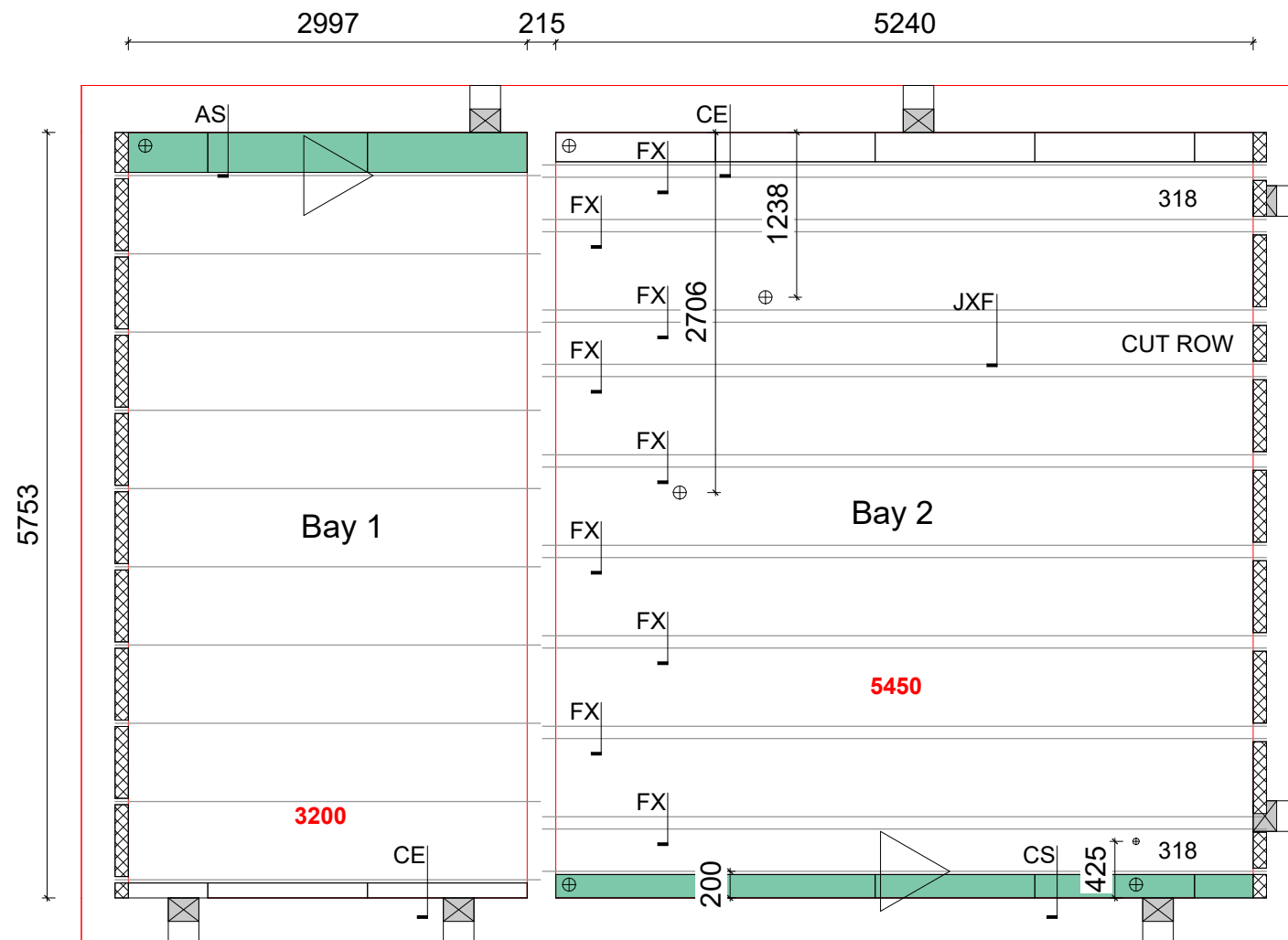
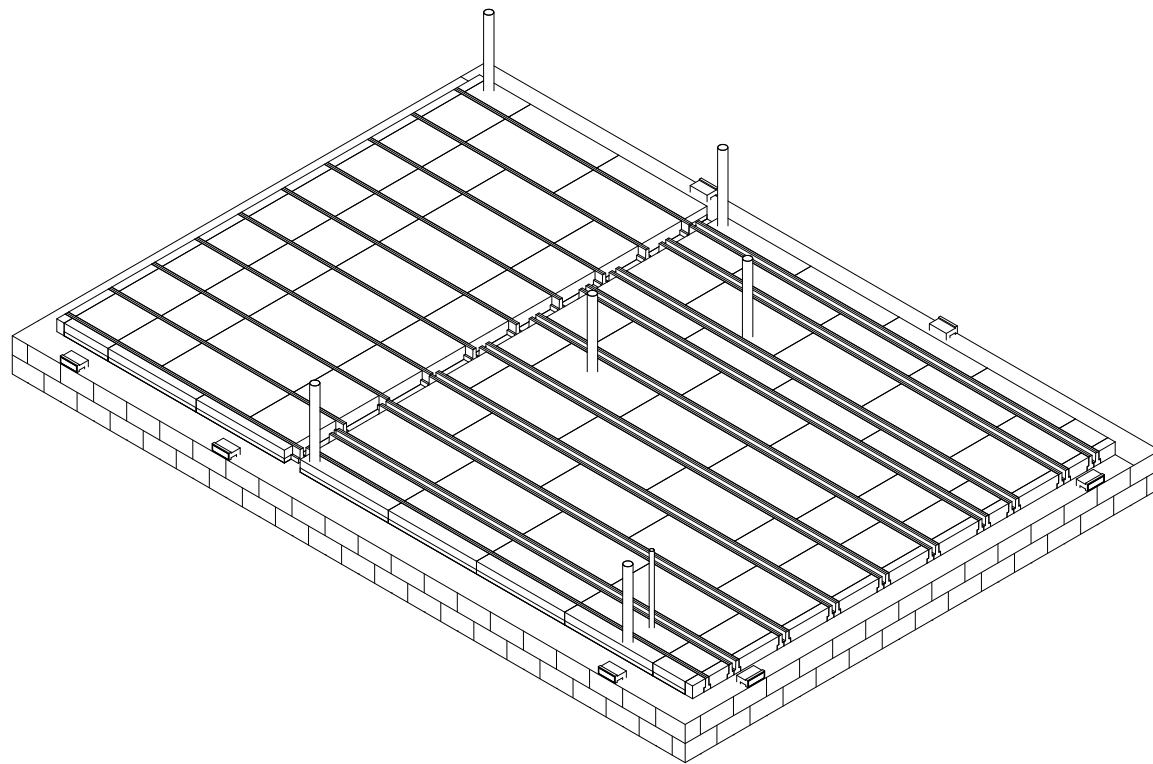
318 150mm Floor Joists With 270mm Poly Panel Between (Poly)

Beam weight = 24kg/m Manufactured in 25mm Increments

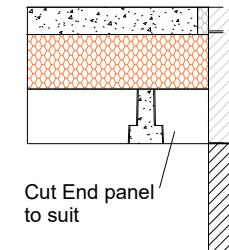
Yellow Oversight not required on these bays (if oversight design)

All Internal load bearing walls must be built through before topping is applied. Additional shuttering may be required.

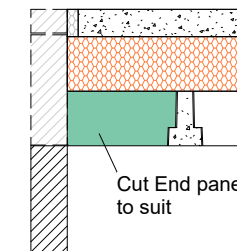
Green hatched Non loadbearing walls can be filled with poly (hatched).



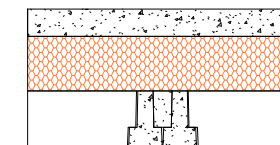
SECTION AS



SECTION CE

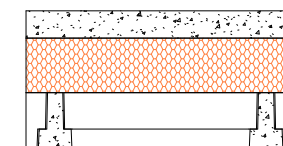


SECTION CS



Two beams grouted solid

SECTION FX



Cut Row - Max 398mm Centres  
Do not use OverSheet for cut row

SECTION JXF

## DESIGN CRITERIA

Design does not allow for Underfloor Heating Systems to be installed within the floor, please contact CUBE6 to discuss options.

PARTITIONS - 0.5kN/m<sup>2</sup> Non Load Bearing Stud  
FINISHES - 1.725kN/m<sup>2</sup> 75mm Structural Topping

## Imposed Loads KN/m2

Bay	Imposed Load	Partition Type
1	1.5	No Partition
2	1.5	Stud Partition

## Ancillaries Schedule - With Panels

Prod. Code	Description	Count
ANC-OS15WF	OS15 540mm Infill Panel (White)	49
ANC-OS15WH	OS15 270mm Infill Panel (White)	9
ANC-OS15WS	OS15 300mm End Panel (White)	14
ANC-OSWC	OS 100mm Cut Panel (White)	5
ANC-PES75P	75mm Poly Edge Strip (Platinum)	25
ANC-LCB	100mm Large Closure Block - 7.3N	17
ANC-SCB	100mm Small Closure Block - 7.3N	3
ANC-AB3	1201 Air Brick	7
ANC-HES	1206 Horizontal Extension Sleeve	7
ANC-UV	1201 Telescopic Vent - 5-7 Courses	7

## Beam Schedule

Description	Wires	Length	Bay No	Qty
150mm Floor Joist	4	3200	1	10
150mm Floor Joist	4	5450	2	19

Product - W150 Panel combined with P150mm Oversight

## THERMAL VALUES

PERIMETER/AREA VALUE - 0.583

TARGET U VALUE - 0.12 ACTUAL U VALUE - 0.12

REV	DESCRIPTION	INI	DATE
-----	-------------	-----	------

## TOTAL LENGTHS AND AREA

150mm - Length	Oversheets	Internal Floor Area
135.550 m	16.9 no. OS150P	49 m <sup>2</sup>

## HOUSE TYPE

HT 34

## SITE

Fairbridge Way, Phase 3, Burgess Hill, RH15 8BF



PRECAST CONCRETE FLOORING

PRODUCT  
150mm OS Thermal Floor

DRAWN BY  
evie@cube6.co.uk

DATE  
30/05/2024

DRG No  
231550-12-W150P

Please note that our design does not allow for carrying any structural newel posts or loadbearing walls unless clearly noted on the drawing.

Plots: 147,174,180,263,268