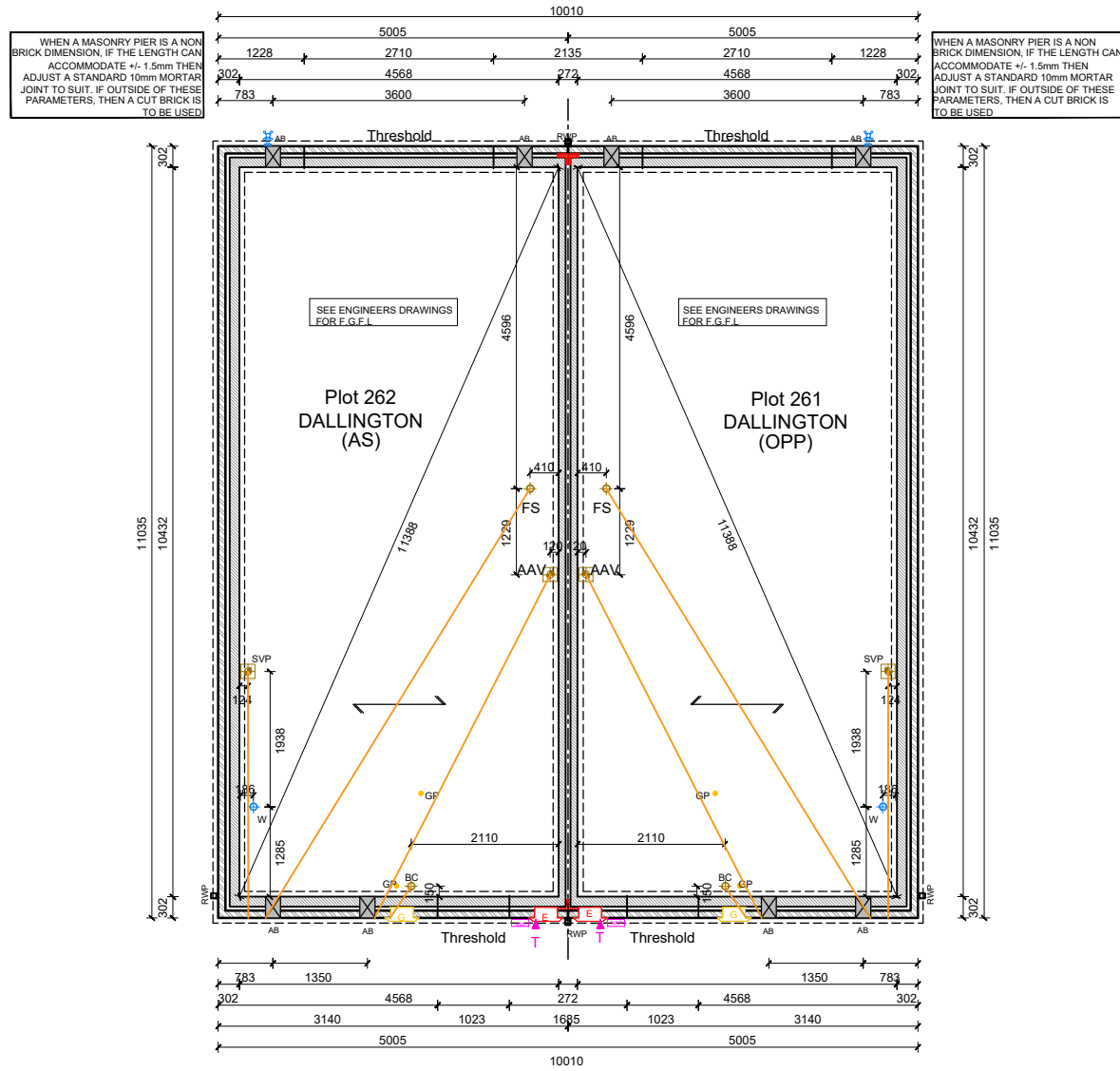


# SUBSTRUCTURE BLOCK PLAN

## PLOTS 261-262



Key:				Wall Legend:	
SW	Direct drainage connection for Kitchen Sink	SS	Stub stack	G	Semi-recessed gas meter box
BAV	Direct drainage connection for Bathroom Vent	AAV	Air admittance valve	E	Semi-recessed electric meter box
WB	Direct drainage connection for Wash Hand Basin	W	Water entry point	EX	Extract vent
WC	Direct drainage connection for WC	GP	Gas point	CB	Cavity Barrier to party wall / external wall junction - to extend to top of foundation level.
FS	Direct drainage connection for Future Shower	ET	External water tap	CS	Consumer service unit.
BC	Direct drainage connection for boiler condensate	TE	Telemec entry point	NW	Network access point.
SVP	Soil and Vent Pipe	CSU	Consumer service unit.	RWP	Rain water downpipe.
				AB	Air brick

**SUBSTRUCTURE WALLS**

102.5mm facing brickwork.

140mm Aircrete blockwork 3.0N/m<sup>2</sup> (450-800kg/m<sup>3</sup>, 0.15W/mK).

**Part M COMPLIANCE Note**  
 Pits noted as M4(2) are required to have a front and rear door.  
 For all M4(1) pits level thresholds between a front and rear doors only with the exception of where stepped access is provided to the front door then the Civil Engineers level is required at the rear door. Refer to Civil Engineers levels for all M4(1) pits located in the house.

**Wall Legend:**

## SUBSTRUCTURE WALLS

 102.5mm facing brickwork.

 140mm Aircrete blockwork  
3.6N/mm<sup>2</sup> (450-800kg/m<sup>3</sup>,  
0.15W/mk).

**Part M COMPLIANCE NOTE**  
Plots noted as M4(2) are required to have a front and rear level threshold and compliant rear door.  
For all M4(1) plots level thresholds required to front doors only with the exception of where stepped access is provided to the front door therefore level access is required at the rear door. Refer to Civil Engineers levels drawn for M4(1) plots requiring the above.

**SUB STRUCTURE NOTES :**

- |                                     |   |  |   |   |  |   |  |   |
|-------------------------------------|---|--|---|---|--|---|--|---|
| 1. THIS DRAWING MUST NOT BE SCALED. | 2. THIS DRAWING IS TO BE READ IN CONJUNCTION WITH ALL OTHER PROJECT DRAWINGS. | 3. ALL DIMENSIONS AND DIMENSIONS MUST BE READ IN CONJUNCTION WITH THE PROJECT SPECIFIC CONSTRUCTION SPECIFICATION. | 4. BEARINGS AND ELEVATIONS FOR STRUCTURAL ENGINEER / SPECIALIST DESIGN. | 5. FOR DETAILS OF CASE INSITU WATERLOOED FLOOR, SEE GROUND FLOOR SLAB, SEE SPECIALIST DRAWINGS. | 6. FLOOR LEVEL, TOP OF FLOATING SLAB, SUSPENDED SLAB, RIGID FLOOR, FLOOR FINISH WITH DPC INSULATION POSITIONED UNDER SLAB. | 7. FOUNDATION WIDTHS AND DEPTHS TO BE DETERMINED BY THE STRUCTURAL ENGINEER, BASED ON INVESTIGATION REPORT / WALL FOUNDATION LOADS TO BE AGREED BY THE BUILDING CONTROL ENGINEER. | 8. CHECK SOIL REPORT FOR SPECIAL REQUIREMENTS E.G. SOILS WITH HIGH WATER TABLES. | 9. GAS PIPES TO RUN IN GROUND FLOOR INSULATION OR, IF GROUND FLOOR IS POWER FLOATED, WITHIN FIRST FLOOR FLOOR SLAB. |
|-------------------------------------|---|--|---|---|--|---|--|---|

6. DATUM 1 (MASONRY CONSTRUCTION ONLY) = FINISHED FLOOR LEVEL. TOP OF FLOATING SLAB, SUSPENDED SLAB AND RAFT FOUNDATION TO BE LEVEL WITH DPC (DRAINAGE POSITION) AND DRAINER.
7. FOUNDATION WIDTHS AND DEPTHS TO BE DETERMINED BY THE STRUCTURAL ENGINEER, BASED ON THE SITE INVESTIGATION REPORT / WALL FOUNDATION LOADS TO BE AGREED BY THE BUILDING CONTROL ENGINEER.
8. CHECK SOIL REPORT FOR SPECIAL REQUIREMENTS E.G. PRECAUTIONS NECESSARY FOR SULPHATES IN SOIL ETC.
9. GAS PIPES TO RUN IN GROUND FLOOR INSULATION OR, IF GROUND FLOOR IS POWER FLOATED, WITHIN FIRST FLOOR CARCASS.

**Notes**

- Copyright in this drawing remains the property of BM3 Architecture Limited.
- Do not scale this drawing.  
Work to figured dimensions only.
- Contractors and consultants are to advise BM3 Architecture Limited of any discrepancies.

### IMPORTANT NOTE

Revision	Date	By	Chkd
P1	01.07.24	DA	CF
Preliminary first issue.			

PRELIMINARY

Project  
BURGESS HILL  
FAIRBRIDGE WAY

CiSfb Element

Drawing  
PLOTS 261-262  
SUBSTRUCTURE  
BLOCK PLANS

Drawn by DA	Checked CF	
Scale 1:50@A1	Dated 08.02.24	
Job No. 71978	Drawing No. 261-262-200 P1	Revision

Birmingham Office  
28 Pickford Street, Digbeth, Birmingham, B5 5QH  
T. 0121 633 0000 F. 0121 633 0300 E. [design@bom3.co.uk](mailto:design@bom3.co.uk)

# BM3