

Drawing Legend (Where Applicable)

Joist Start Layout Point Poly Start Layout Point

All Closure Blocks Must Be Bedded

Void Vent Position - see Architects plans for cross venting

Service Hole Position

150mm Floor Joists At 588mm Centres Unless Otherwise Stated (Poly)

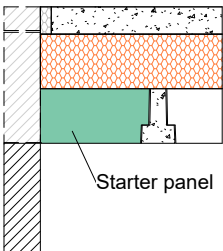
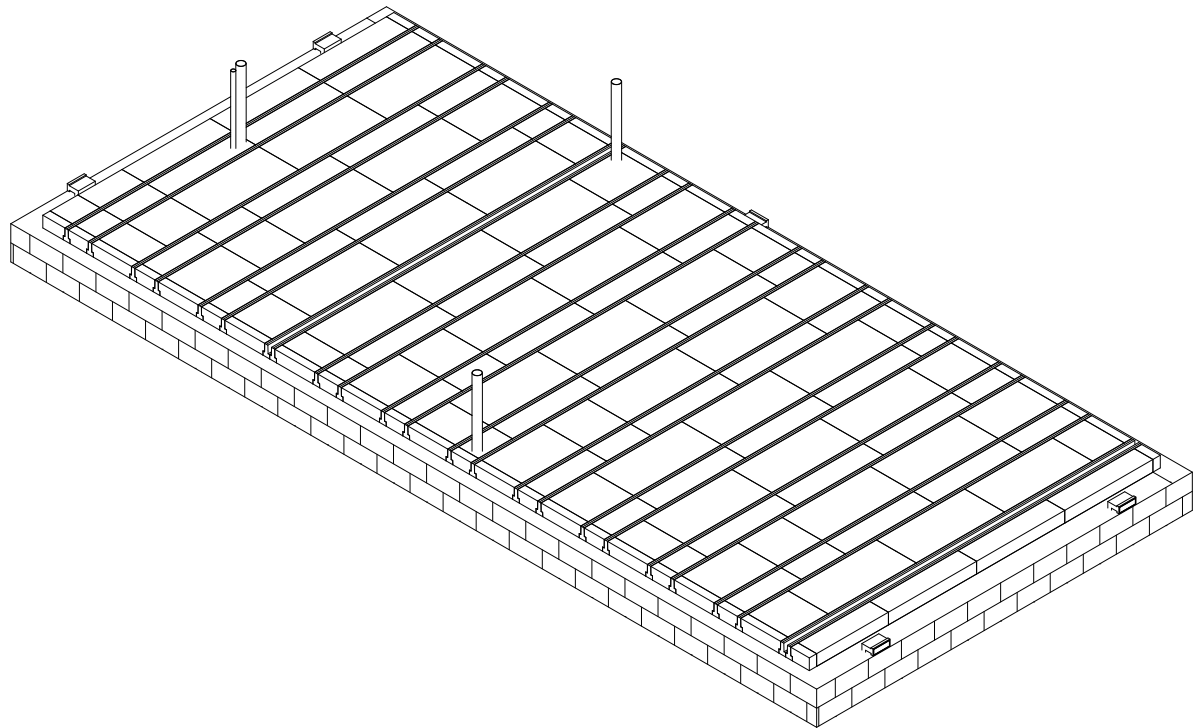
318 150mm Floor Joists With 270mm Poly Panel Between (Poly)

Beam weight = 24kg/m Manufactured in 25mm Increments

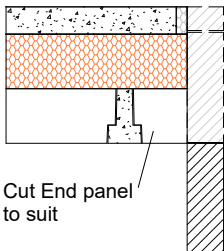
Oversheet not required on these bays (if oversheet design)

All Internal load bearing walls must be built through before topping is applied. Additional shuttering may be required.

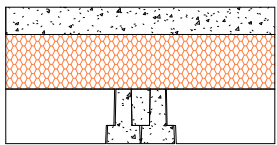
Non loadbearing walls can be filled with poly (hatched).



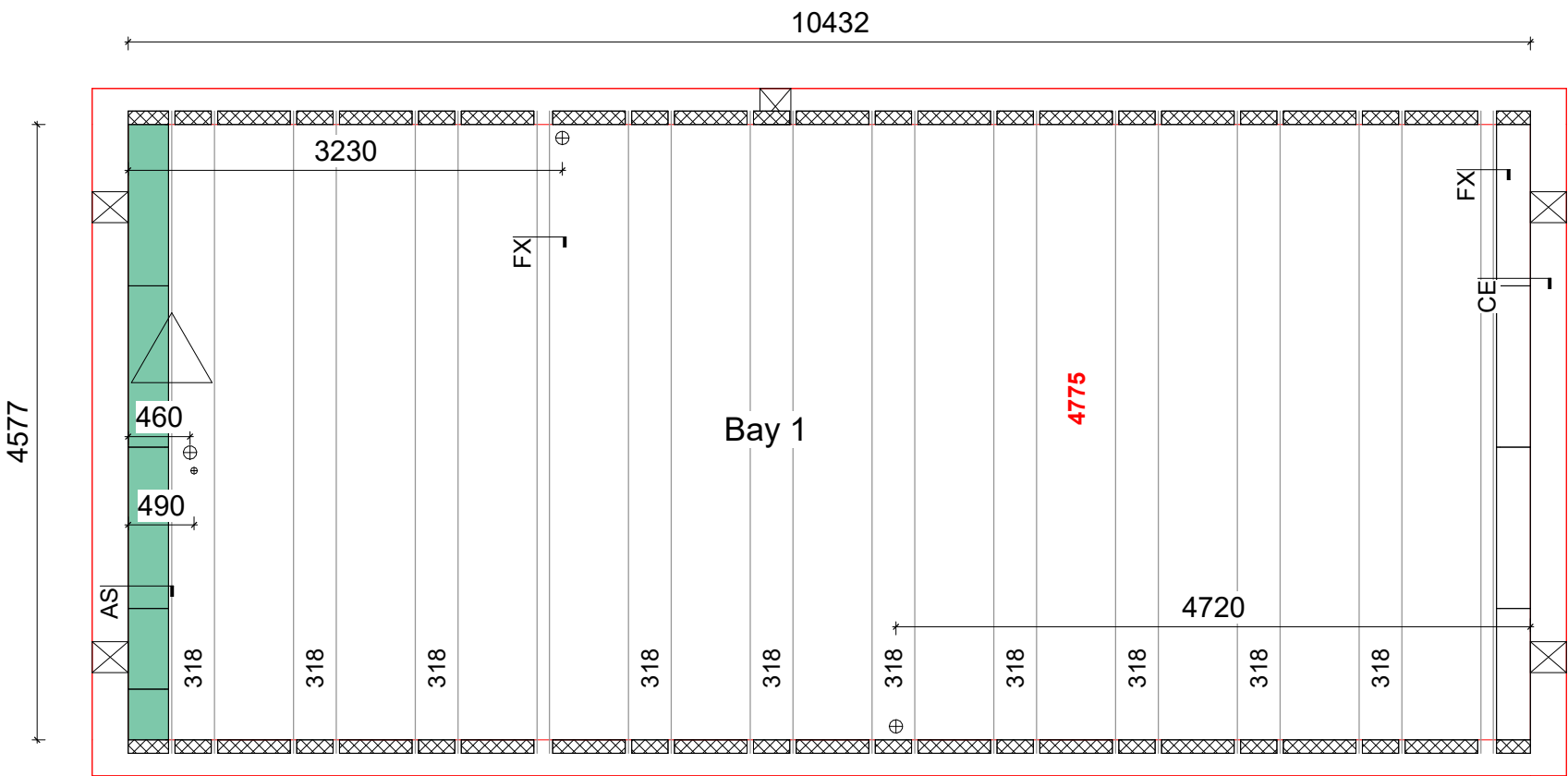
SECTION AS



SECTION CE



Two beams grouted solid
SECTION FX



DESIGN CRITERIA

Design does not allow for Underfloor Heating Systems to be installed within the floor, please contact CUBE6 to discuss options.

PARTITIONS - 0.5kN/m² Non Load Bearing Stud

FINISHES - 1.725kN/m² 75mm Structural Topping

OTHER INFILLS - EPS Panel

Imposed Loads KN/m2

Bay	Imposed Load	Partition Type
1	1.5	Stud Partition

Ancillaries Schedule - With Panels

Prod. Code	Description	Count
ANC-OS15WF	OS15 540mm Infill Panel (White)	42
ANC-OS15WH	OS15 270mm Infill Panel (White)	39
ANC-OS15WS	OS15 300mm End Panel (White)	8
ANC-PES75P	75mm Poly Edge Strip (Platinum)	30
ANC-LCB	100mm Large Closure Block - 7.3N	25
ANC-SCB	100mm Small Closure Block - 7.3N	20
ANC-AB3	1201 Air Brick	5
ANC-UV	1201 Telescopic Vent - 5-7 Courses	5

Beam Schedule

Description	Wires	Length	Bay No	Qty
150mm Floor Joist	4	4775	1	24

Product - W150 Panel combined with P150mm Oversheet

THERMAL VALUES

PERIMETER/AREA VALUE - 0.191

TARGET U VALUE - 0.12 ACTUAL U VALUE - 0.10

REV	DESCRIPTION	INI	DATE
-----	-------------	-----	------

TOTAL LENGTHS AND AREA

(Area*10=Approx Quantity Required)

150mm - Length	Oversheets	Internal Floor Area
114.600 m	16.6 no. OS150P	48 m²

HOUSE TYPE

Dallington Mid

SITE

Fairbridge Way, Phase 3, Burgess Hill, RH15 8BF



PRODUCT

DRAWN BY
evie@cube6.co.uk

DATE
26/10/2023

DRG No
231550-8-W150P

Plots: 109,112,150,155,259

Please note that our design does not allow for carrying any structural newel posts or loadbearing walls unless clearly noted on the drawing.