






Drawing Legend (Where Applicable)


- 

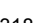
Joist Start Layout Point
- 


Poly Start Layout Point
- 


All Closure Blocks Must Be Bedded
- 


Void Vent Position - see Architects plans for cross venting
- 


Service Hole Position
- 

150mm Floor Joists At 588mm Centres Unless Otherwise Stated (Poly)
- 

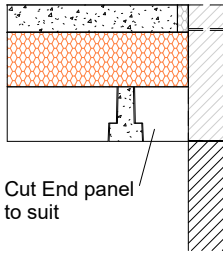
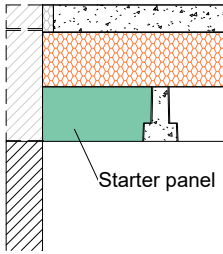
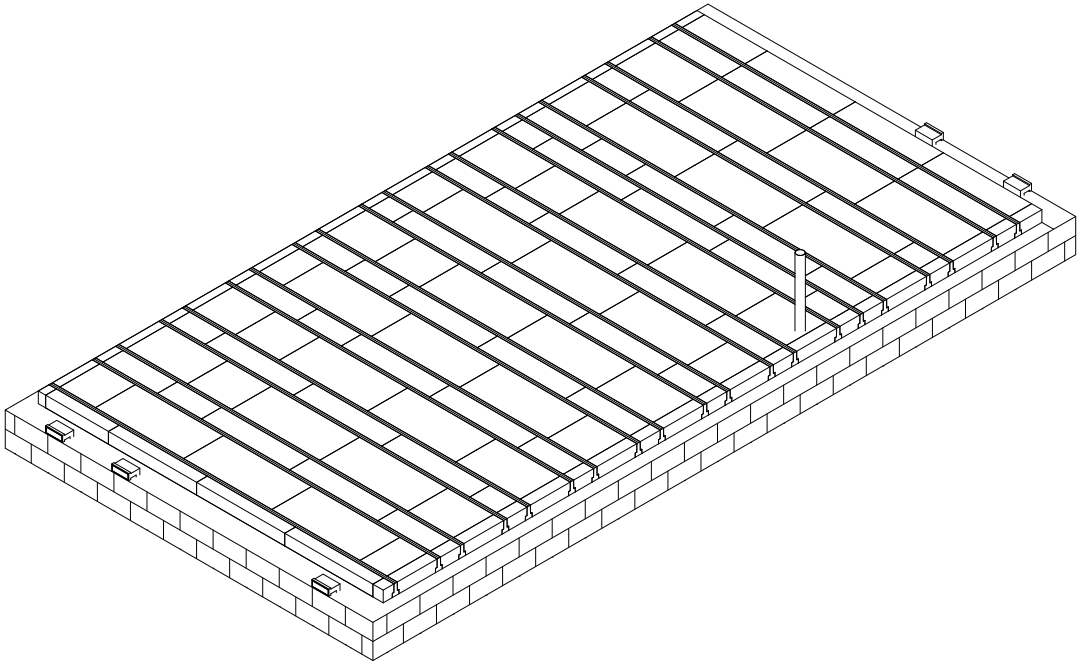
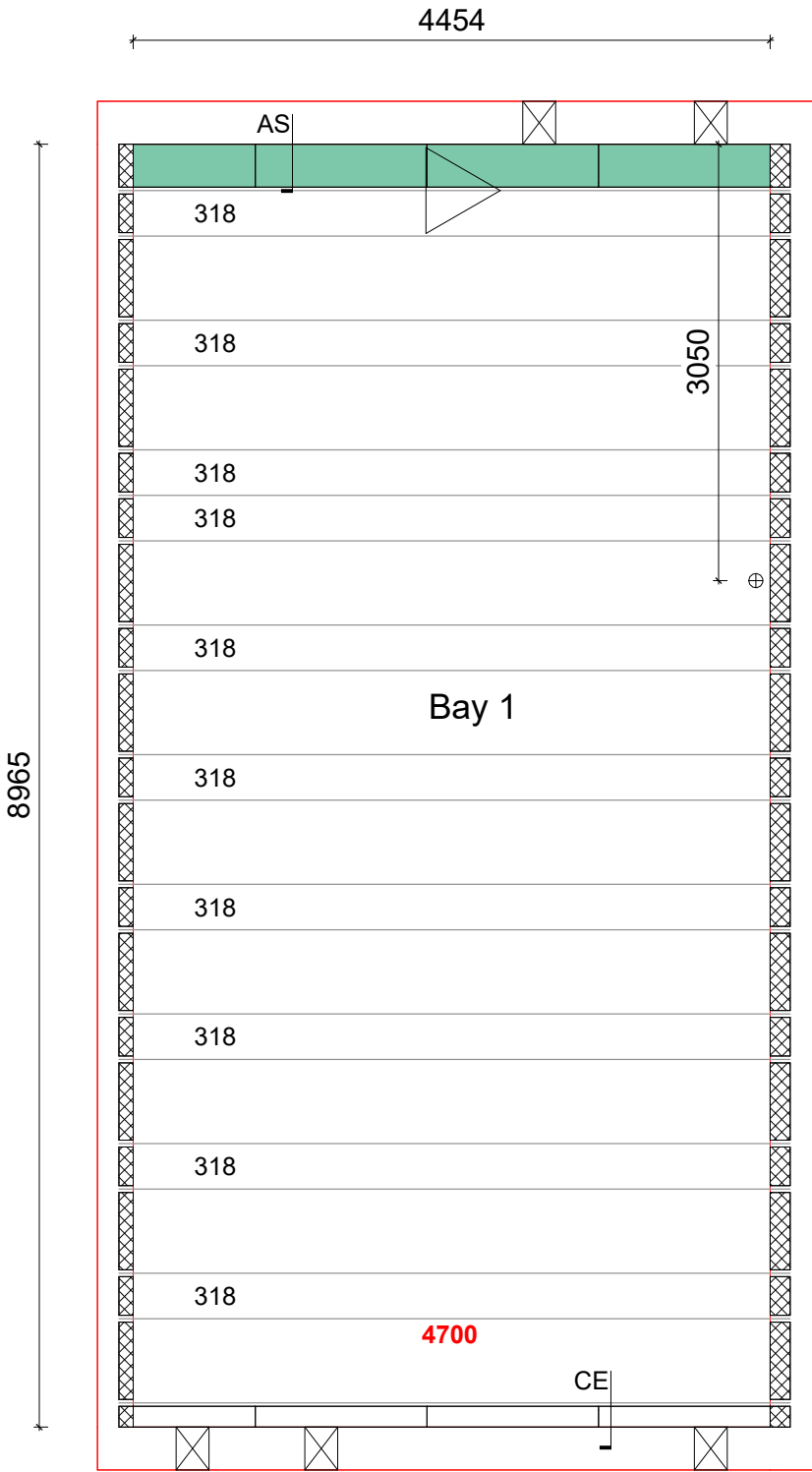
318 150mm Floor Joists With 270mm Poly Panel Between (Poly)
- 

Beam weight = 24kg/m Manufactured in 25mm Increments
- 

Oversheet not required on these bays (if oversheet design)
- 

All Internal load bearing walls must be built through before topping is applied. Additional shuttering may be required.
- 

Non loadbearing walls can be filled with poly (hatched).



SECTION AS

SECTION CE

DESIGN CRITERIA
Design does not allow for Underfloor Heating Systems to be installed within the floor, please contact CUBE6 to discuss options.
PARTITIONS - 0.5kN/m² Non Load Bearing Stud
PARTITIONS - 3kN/m Non Load Bearing Block
FINISHES - 1.725kN/m² 75mm Structural Topping
OTHER INFILLS - EPS Panel

Imposed Loads KN/m2		
Bay	Imposed Load	Partition Type
1	1.5	Stud Partition

Ancillaries Schedule - With Panels		
Prod. Code	Description	Count
ANC-OS15WF	OS15 540mm Infill Panel (White)	34
ANC-OS15WH	OS15 270mm Infill Panel (White)	38
ANC-OS15WS	OS15 300mm End Panel (White)	8
ANC-PES75P	75mm Poly Edge Strip (Platinum)	25
ANC-140LCB	140mm Large Closure Block - 7.3N	10
ANC-140SCB	140mm Small Closure Block - 7.3N	10
ANC-LCB	100mm Large Closure Block - 7.3N	11
ANC-SCB	100mm Small Closure Block - 7.3N	10
ANC-AB3	1201 Air Brick	5
ANC-UV	1201 Telescopic Vent - 5-7 Courses	5

Beam Schedule				
Description	Wires	Length	Bay No	Qty
150mm Floor Joist	4	4700	1	20

THERMAL VALUES
PERIMETER/AREA VALUE - 0.447
TARGET U VALUE - 0.12 ACTUAL U VALUE - 0.12


Product - W150 Panel combined with P150mm Oversheet

d	Amended to Latest Timber Frame drawings	EH	22/05/24
c	Plots Amended	EH	10/04/24
b	Amended design, sleeper walls and bays removed, beam config adjusted to suit	JB	16/02/24
a	svps added	EH	27/10/23

REV	DESCRIPTION	INI	DATE
TOTAL LENGTHS AND AREA (Area*10=Approx Quantity Required)			
150mm - Length Oversheets		Internal Floor Area	
94.000 m	13.9 no. OS150P	40 m²	

HOUSE TYPE
Cardinham End

SITE
Places For People, Phase 3, Fairbridge Way,
Burgess Hill, West Sussex, RH15 8BF

	PRODUCT	
	DRAWN BY evie@cube6.co.uk	
	DATE 26/10/2023	
	DRG No 231550-1-W150P	d

Please note that our design does not allow for carrying any structural newel posts or loadbearing walls unless clearly noted on the drawing.

Plots: 107,123,129,133,139,159,171,172,175,176,178,186,193