

**Drawing Legend (Where Applicable)**

▶ Joist Start Layout Point    ▶ Poly Start Layout Point

All Closure Blocks Must Be Bedded

Void Vent Position - see Architects plans for cross venting

⊕ Service Hole Position

150mm Floor Joists At 588mm Centres Unless  
Otherwise Stated (Poly)

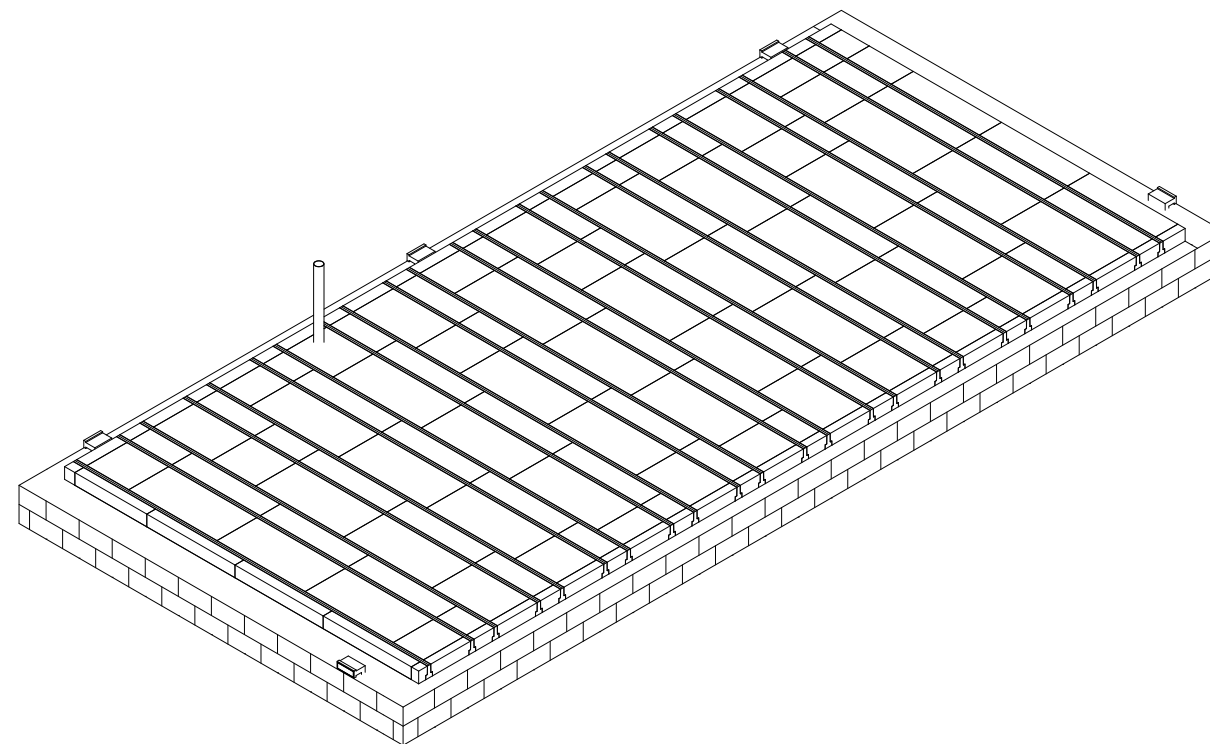
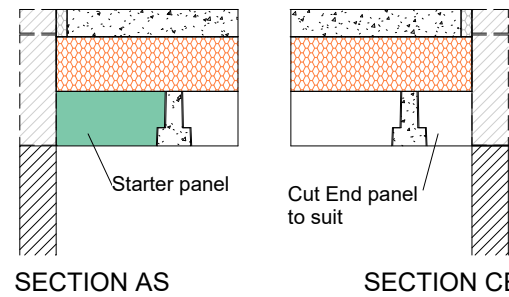
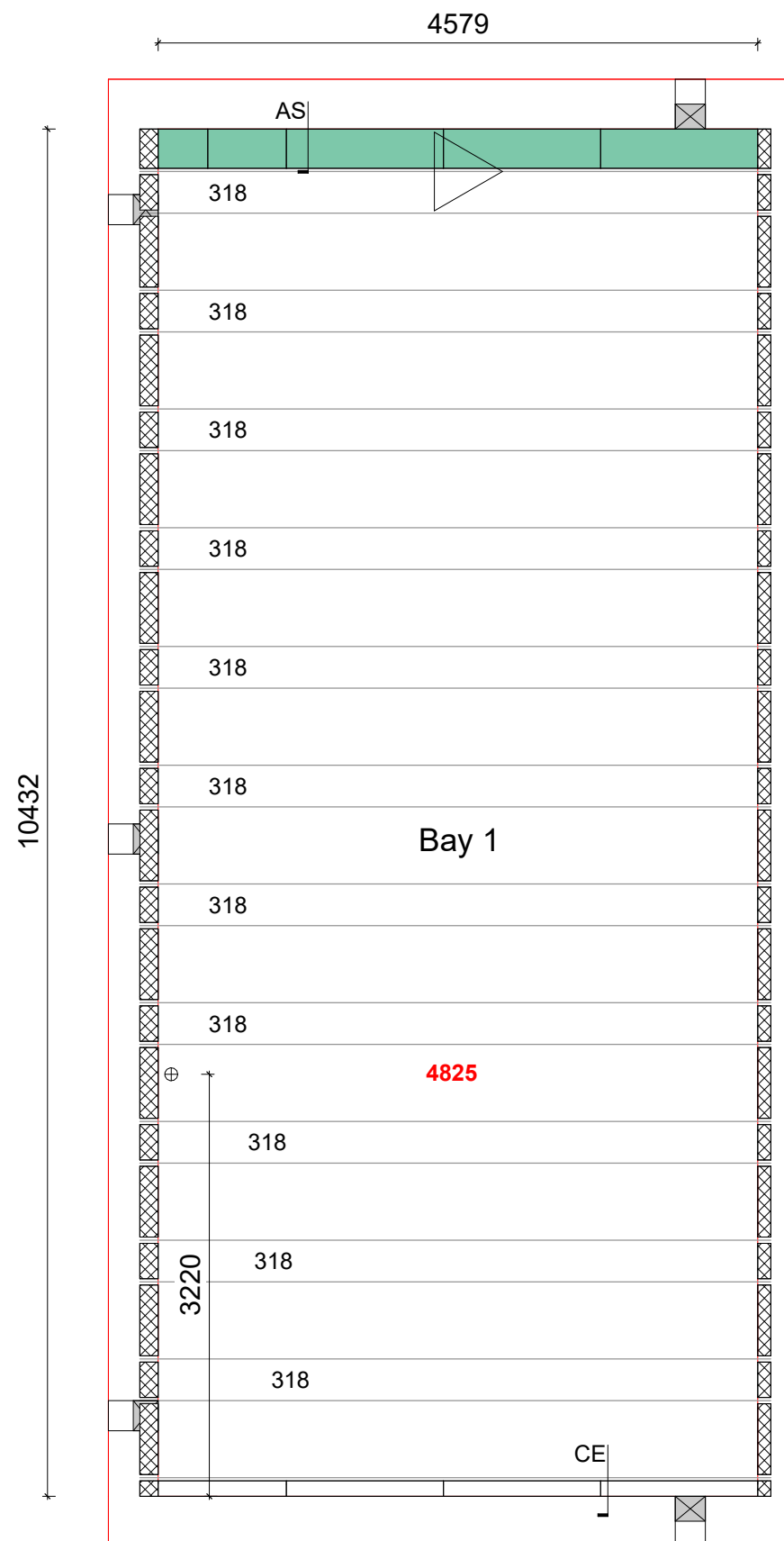
318 150mm Floor Joists With 270mm Poly Panel Between (Poly)

Beam weight = 24kg/m    Manufactured in 25mm Increments

Oversheet not required on these bays (if oversheet design)

All Internal load bearing walls must be built through before  
topping is applied. Additional shuttering may be required.

Non loadbearing walls can be filled with poly (hatched).

**DESIGN CRITERIA**

Design does not allow for Underfloor Heating Systems to be installed within the floor, please contact CUBE6 to discuss options.

PARTITIONS - 0.5kN/m<sup>2</sup> Non Load Bearing StudFINISHES - 1.725kN/m<sup>2</sup> 75mm Structural Topping

OTHER INFILLS - EPS Panel

**Imposed Loads KN/m2**

Bay	Imposed Load	Partition Type
1	1.5	Stud Partition

**Ancillaries Schedule - With Panels**

Prod. Code	Description	Count
ANC-OS15WF	OS15 540mm Infill Panel (White)	42
ANC-OS15WH	OS15 270mm Infill Panel (White)	42
ANC-OS15WS	OS15 300mm End Panel (White)	8
ANC-PES75P	75mm Poly Edge Strip (Platinum)	30
ANC-140LCB	140mm Large Closure Block - 7.3N	12
ANC-140SCB	<varies>	12
ANC-LCB	100mm Large Closure Block - 7.3N	12
ANC-SCB	100mm Small Closure Block - 7.3N	11
ANC-AB3	1201 Air Brick	5
ANC-HES	1206 Horizontal Extension Sleeve	5
ANC-UV	1201 Telescopic Vent - 5-7 Courses	5

**Beam Schedule**

Description	Wires	Length	Bay No	Qty
150mm Floor Joist	4	4825	1	23

Product - W150 Panel combined with P150mm Oversheet

**THERMAL VALUES**

PERIMETER/AREA VALUE - 0.410

TARGET U VALUE - 0.12    ACTUAL U VALUE - 0.11

c	amended to latest Timber Frame	EH	29/05/24
b	plots amended	EH	10/04/24
a	svps added	EH	27/10/23

REV	DESCRIPTION	INI	DATE
-----	-------------	-----	------

**TOTAL LENGTHS AND AREA**

(Area\*10=Approx Quantity Required)

150mm - Length	Oversheets	Internal Floor Area
110.975 m	16.6 no. OS150P	48 m <sup>2</sup>

**HOUSE TYPE**

Dallington End

**SITE**Places For People, Phase 3, Fairbridge Way,  
Burgess Hill, West Sussex, RH15 8BF**PRODUCT**DRAWN BY  
evie@cube6.co.ukDATE  
26/10/2023DRG No  
231550-2-W150P

c

Plots:

108,110,111,113,134,149,151,152,153,154,156,157,158,161,162,163,164,165,166,187,188,256,257,258,260,261,262

Please note that our design does not allow for carrying any structural newel posts or loadbearing walls unless clearly noted on the drawing.