

**Substructure Wall Legend (100mm Cavity)**

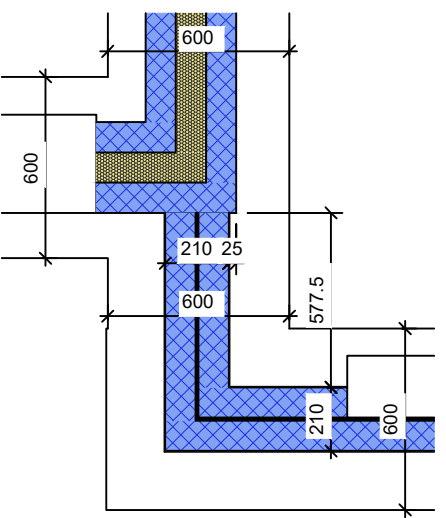
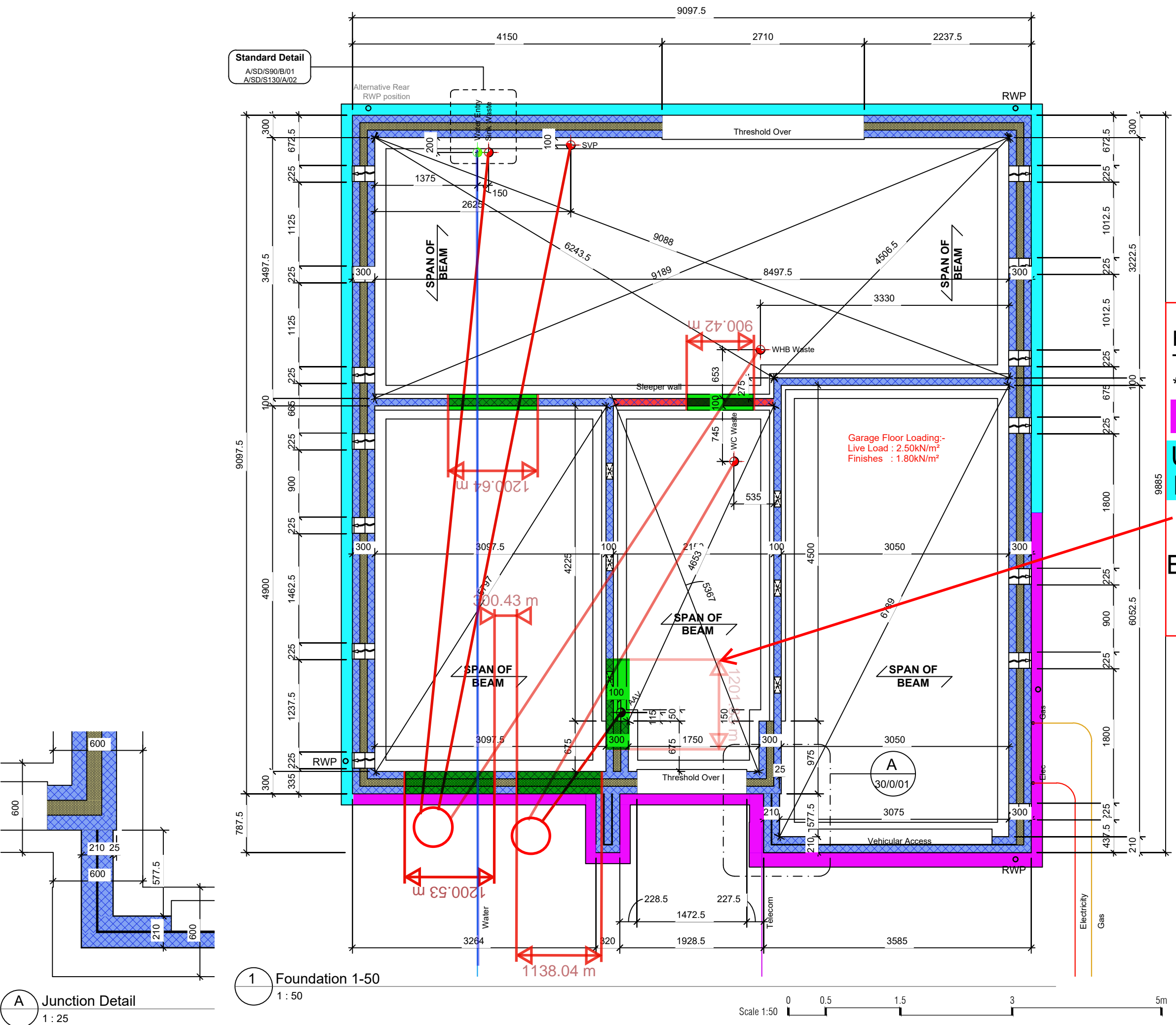
	<b>Standard External Insulated Cavity Wall (Below Ground)</b> 100mm blocks (7.3N/mm <sup>2</sup> ) upto 150mm below external ground level, then class B engineering brickwork (102.5mm) to DPC level 100mm cavity with expanded polystyrene board (thermal conductivity 0.038 W/m <sup>2</sup> /K) 100mm aerated concrete block / coursing bricks (7.3N/mm <sup>2</sup> )
	<b>External Uninsulated Cavity Wall (To Garage etc - Below Ground)</b> 100mm blocks (7.3N/mm <sup>2</sup> ) upto 150mm below external ground level, then class B engineering brickwork (102.5mm) to DPC level 100mm cavity 100mm aerated concrete block / coursing bricks (7.3N/mm <sup>2</sup> )
	<b>Party Wall (Below Ground)</b> 100mm aircrete block (7.3N/mm <sup>2</sup> ) 100mm cavity with expanded polystyrene board (thermal conductivity 0.038 W/m <sup>2</sup> /K) 100mm aircrete block (7.3N/mm <sup>2</sup> )
	<b>Internal Blockwork Partition (Below Ground)</b> 100mm aerated concrete block (7.3N/mm <sup>2</sup> ) (Suspended ground floor beam manufacturer's coursing blocks / bricks as required)
	<b>Sleeper Wall</b> 100mm aerated concrete block (7.3N/mm <sup>2</sup> ) to underside of suspended ground floor beams

Refer to current Construction Specification for further details

**NB. 3.6N/mm<sup>2</sup> Blockwork may be used below DPC subject to Divisional Consulting Engineers Approval.**

**PLOT 715**  
 FFL = 118.650m  
 TOC = 117.825m  
 \*118.275-450mm to underside  
**TANKING - Raised D.P.C**  
**UNDERBUILD- leave one block down**  
 Don't put any trench blocks  
 Brick : forterra special reserve

Rev: C1 Date: 2025.02.17 By: GM IJC Issued for construction.



**1 Foundation 1-50**  
1 : 50

**CONSTRUCTION**

**Bellway**

**arkonassociates**  
architecture + design

Luminous House, 300 South Row, Milton Keynes. MK9 2FR  
T: 01438 359816  
E: enquiries@arkonassociates.co.uk  
www.arkonassociates.co.uk

CLIENT:  
BELLWAY HOMES LTD. (NORTH LONDON)

PROJECT:  
FORSTER PARK, STEVENAGE (PHASE 2)

WORKING DRAWINGS

TITLE:  
The Cutler

1335 ft<sup>2</sup> | 4b Det | All Variants

Foundation Layout

SCALE: 1:50@A3 DATE: June 24 DRAWN BY: GM CHECKED: IJC

PROJ No: 5279 DWG No: CU3001 REV: C1