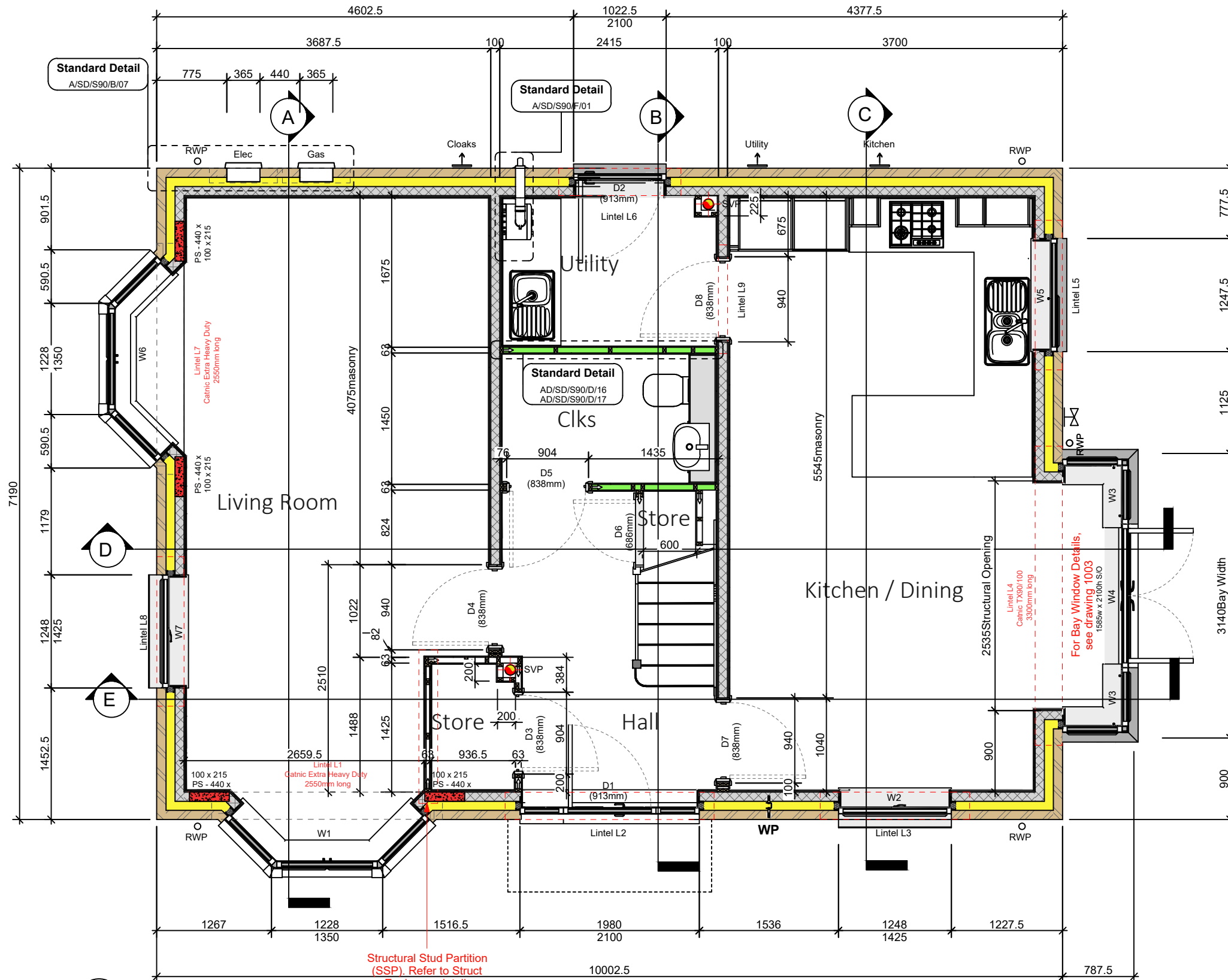


Wall Legend - Brick (100mm Cavity)

	Standard External Insulated Cavity Wall - 0.24W/m²K 102.5mm facing brickwork 100mm cavity filled with blown mineral fibre insulation 100mm aerated concrete block, K-value 0.11W/m²K, min strength 2.9N/mm² 12.5mm gypsum board on adhesive dabs
	Standard External Insulated Cavity Wall - Rendered - 0.24W/m²K 22mm monocouche through colour render to outer leaf 102.5mm facing brickwork 100mm cavity filled with blown mineral fibre insulation 100mm aerated concrete block, K-value 0.11W/m²K, min strength 2.9N/mm² 12.5mm gypsum board on adhesive dabs
	High Strength External Insulated Cavity Wall - 0.26W/m²K 102.5mm facing brickwork 100mm cavity filled with blown mineral fibre insulation 100mm aerated concrete block, K-value 0.19W/m²K, min strength 7.3N/mm² 12.5mm gypsum board on adhesive dabs
	High Strength External Insulated Cavity Wall - 0.26W/m²K 102.5mm facing brickwork 100mm aerated concrete block, K-value 0.15W/m²K, min strength 3.6N/mm² 102.5mm facing brickwork, K-value 0.19W/m²K, min strength 15N/mm² 12.5mm gypsum board on adhesive dabs
	Internal Blockwork Partition 12.5mm gypsum board on adhesive dabs 100mm aerated concrete block min strength 2.9N/mm² 12.5mm gypsum board on adhesive dabs
	Structural Stud Partition 12.5mm gypsum board 12mm Ply sheathing 72 x 38mm timber studs (studs and noggings rotated through 90°) with 38mm thick Isover APR 1200 acoustic insulation packed between 12.5mm gypsum board 12mm Ply sheathing (Stud wall with 12.5mm Ply both sides min. 2.4m long where feasible, see RSK Superstructure Details drawing. Line load of 2kN/m SLS applied to floor)
	Non-Load Bearing Stud Partition 12.5mm gypsum board 63 x 38mm timber studs 12.5mm gypsum board
	Stud Partition with Acoustic Insulation 12.5mm gypsum board 63 x 38mm timber studs, with 65mm thick Isover APR 1200 acoustic insulation packed between 12.5mm gypsum board
	WP Ancon WP3 or similar within external wall cavity, designed for 7kN ULS load
	PS2 440mm long x 100mm wide x 215mm deep

Note:- all blockwork drawn blue to be 7.3N/mm² as per Structural Engineers comments.
Refer to relevant Construction Specification for either and 2021 Build regs for further details.
This drawing must be read in conjunction with 25 series drawings.
ALL MOVEMENT JOINTS TO BE CONFIRMED AS REQUIRED AND SUITABLE BY S.ENG



1 Ground Floor
1 : 50



Rev: Date: By: Checked: Desc:

TENDER

Luminous House, 300 South Row, Milton Keynes. MK9 2FR
T: 01438 359816
E: enquiries@arkonassociates.co.uk
www.arkonassociates.co.uk

CLIENT: BELLWAY HOMES LTD. (NORTH LONDON)

PROJECT: FORSTER PARK, STEVENAGE (PHASE 2)

WORKING DRAWINGS

TITLE: The Angelica Life

1374 ft² | 4b Detached | AN2

Ground Floor Setting Out Plan

SCALE: 1:50@A3 DATE: Nov 25 DRAWN BY: GM CHECKED: IJC

PROJ No: 5304 DWG No: AN1001-AN2 REV: -