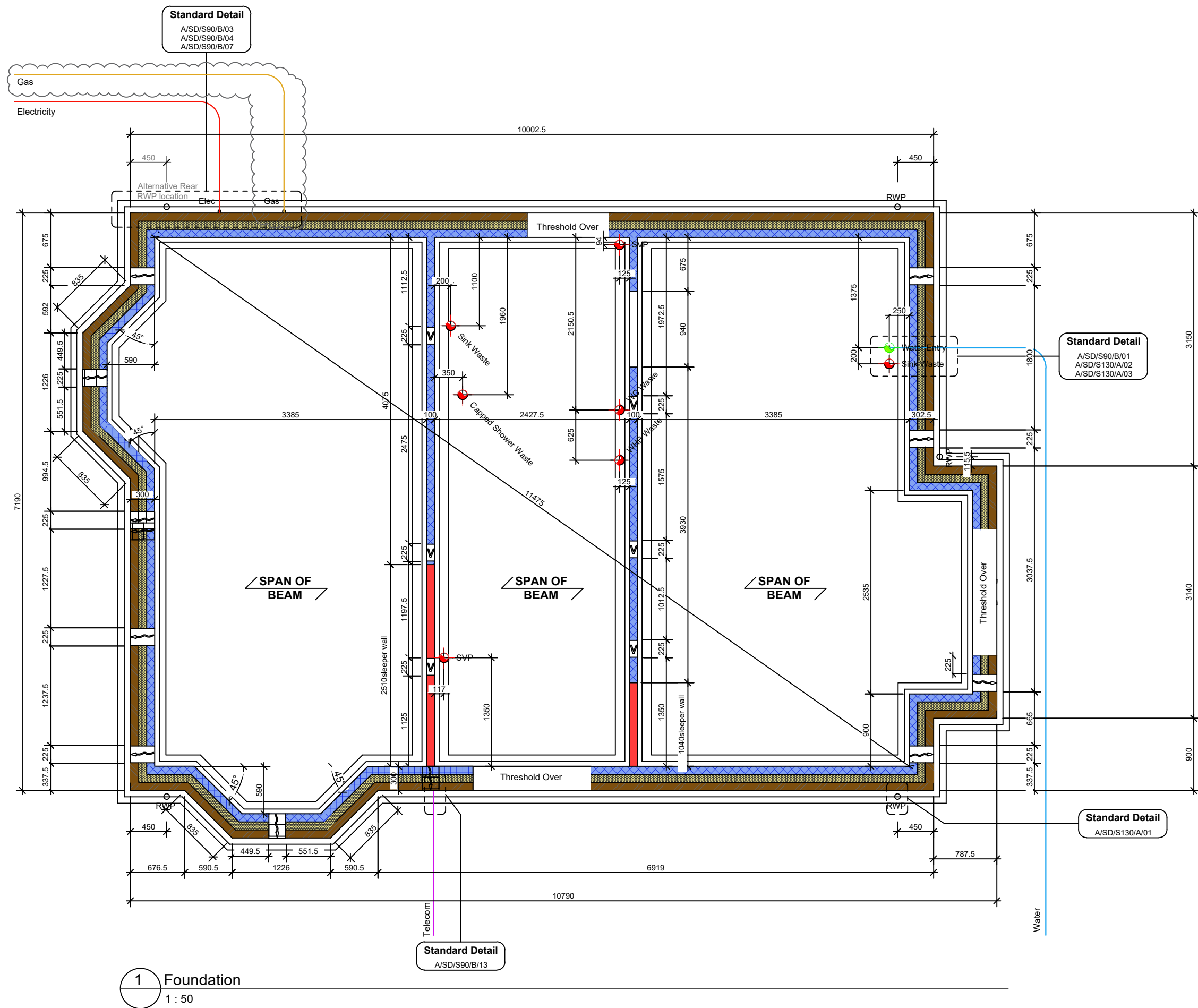


Substructure Wall Legend (100mm Cavity)

	Standard External Insulated Cavity Wall (Below Ground) 100mm blocks (7.3N/mm ²) upto 150mm below external ground level, then class B engineering brickwork (102.5mm) to DPC level 100mm cavity with expanded polystyrene board (thermal conductivity 0.038 W/m ² /K) 100mm aerated concrete block / coursing bricks (7.3N/mm ²)
	External Uninsulated Cavity Wall (To Garage etc - Below Ground) 100mm blocks (7.3N/mm ²) upto 150mm below external ground level, then class B engineering brickwork (102.5mm) to DPC level 100mm cavity 100mm aerated concrete block / coursing bricks (7.3N/mm ²)
	Party Wall (Below Ground) 100mm aircrete block (7.3N/mm ²) 100mm cavity with expanded polystyrene board (thermal conductivity 0.038 W/m ² /K) 100mm aircrete block (7.3N/mm ²)
	Internal Blockwork Partition (Below Ground) 100mm aerated concrete block (7.3N/mm ²) (Suspended ground floor beam manufacturer's coursing blocks / bricks as required)
	Sleeper Wall 100mm aerated concrete block (7.3N/mm ²) to underside of suspended ground floor beams

Refer to current Construction Specification for further details

NB. 3.6N/mm² Blockwork may be used below DPC subject to Divisional Consulting Engineers Approval.



1 Foundation
1 : 50



Rev:	07.08.2025	GM	AB	Gas service intake added.
Date:		By:	Checked:	Desc:

TENDER

Ashberry Homes

arkonassociates architecture + design

Luminous House, 300 South Row, Milton Keynes. MK9 2FR
T: 01438 359816
E: enquiries@arkonassociates.co.uk
www.arkonassociates.co.uk

CLIENT: BELLWAY HOMES LTD. (NORTH LONDON)

PROJECT: FORSTER PARK, STEVENAGE (PHASE 2B & 2D-2)
WORKING DRAWINGS

TITLE: The Angelica Life
1354 ft² | 4b Detached | AN2
Foundation Layout

SCALE: 1:50@A3	DATE: July 25	DRAWN BY: GM	CHECKED: IJC
PROJ No: 5304	DWG No: AN3001-AN2	REV: A	