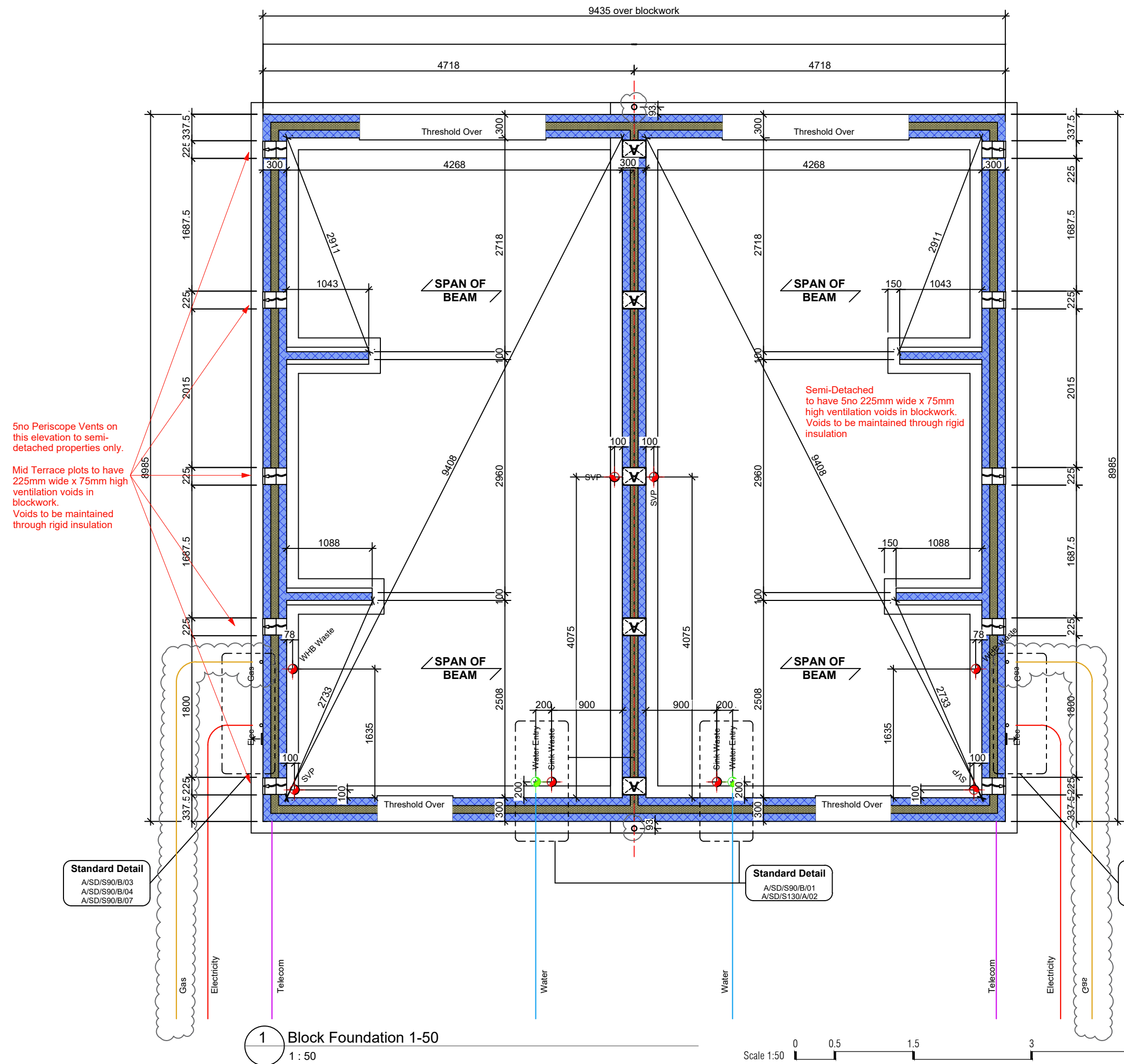


### Substructure Wall Legend (100mm Cavity)

	<b>Standard External Insulated Cavity Wall (Below Ground)</b> 100mm blocks (7.3N/mm <sup>2</sup> ) upto 150mm below external ground level, then class B engineering brickwork (102.5mm) to DPC level 100mm cavity with expanded polystyrene board (thermal conductivity 0.038 W/m <sup>2</sup> /K) 100mm aerated concrete block / coursing bricks (7.3N/mm <sup>2</sup> )
	<b>External Uninsulated Cavity Wall (To Garage etc - Below Ground)</b> 100mm blocks (7.3N/mm <sup>2</sup> ) upto 150mm below external ground level, then class B engineering brickwork (102.5mm) to DPC level 100mm cavity 100mm aerated concrete block / coursing bricks (7.3N/mm <sup>2</sup> )
	<b>Party Wall (Below Ground)</b> 100mm aircrete block (7.3N/mm <sup>2</sup> ) 100mm cavity with expanded polystyrene board (thermal conductivity 0.038 W/m <sup>2</sup> /K) 100mm aircrete block (7.3N/mm <sup>2</sup> )
	<b>Internal Blockwork Partition (Below Ground)</b> 100mm aerated concrete block (7.3N/mm <sup>2</sup> ) (Suspended ground floor beam manufacturer's coursing blocks / bricks as required)
	<b>Sleeper Wall</b> 100mm aerated concrete block (7.3N/mm <sup>2</sup> ) to underside of suspended ground floor beams

Refer to current Construction Specification for further details  
Levels between semi-plots may vary. See C.Eng site levels for information.

**NB. 3.6N/mm<sup>2</sup> Blockwork may be used below DPC subject to Divisional Consulting Engineers Approval.**



5no Periscope Vents on this elevation to semi-detached properties only.  
Mid Terrace plots to have 225mm wide x 75mm high ventilation voids in blockwork. Voids to be maintained through rigid insulation

Semi-Detached to have 5no 225mm wide x 75mm high ventilation voids in blockwork. Voids to be maintained through rigid insulation

**Standard Detail**  
A/SD/S90/B/03  
A/SD/S90/B/04  
A/SD/S90/B/07

**Standard Detail**  
A/SD/S90/B/01  
A/SD/S130/A/02

**Standard Detail**  
A/SD/S90/B/04  
A/SD/S90/B/07

**1** Block Foundation 1-50  
1 : 50



Rev:	07.08.2025	GM	AB	Gas services intake added. RWP moved to party wall location.
Date:		By:	Checked:	Desc:

TENDER

Luminous House, 300 South Row, Milton Keynes. MK9 2FR  
T: 01438 359816  
E:enquiries@arkonassociates.co.uk  
www.arkonassociates.co.uk

CLIENT:  
BELLWAY HOMES LTD. (NORTH LONDON)

PROJECT:  
FORSTER PARK, STEVENAGE (PHASE 2B & 2D-2)  
WORKING DRAWINGS

TITLE:  
The Freesia  
770 ft<sup>2</sup> | 2b Semi | All Variants  
Block Foundation Layout Semi-Detached

SCALE:	DATE:	DRAWN BY:	CHECKED:
1:50@A3	July 25	GM	IJC
PROJ No:	DWG No:	REV:	
5304	FS3001-BLK	A	