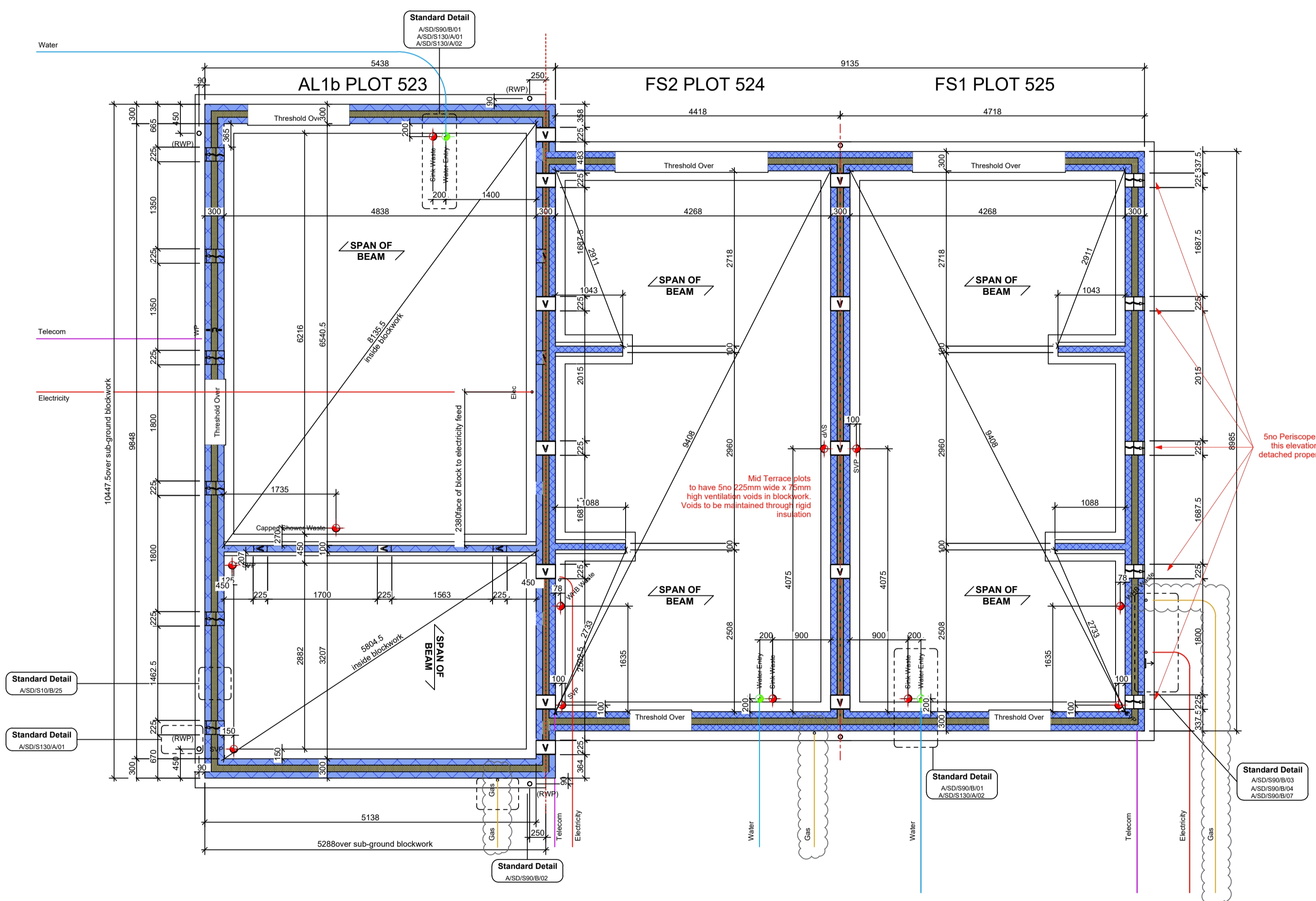


**Substructure Wall Legend (100mm Cavity)**

	<b>Standard External Insulated Cavity Wall (Below Ground)</b> 100mm blocks (7.2kN/m²) up to 150mm below external ground level, then class B engineering brickwork (102.5mm) to DPC level 100mm cavity with expanded polystyrene board (thermal conductivity 0.038 W/m²K) 100mm aerated concrete block / coursing bricks (7.2kN/m²)
	<b>External Uninsulated Cavity Wall (To Grade etc. - Below Ground)</b> 100mm blocks (7.2kN/m²) up to 150mm below external ground level, then class B engineering brickwork (102.5mm) to DPC level 100mm cavity
	<b>Plain Wall (Below Ground)</b> 100mm aerated concrete block / coursing bricks (7.2kN/m²)
	<b>Plain Wall (Above Ground)</b> 100mm aerated block (7.2kN/m²) 100mm cavity with expanded polystyrene board (thermal conductivity 0.038 W/m²K) 100mm aerated block (7.2kN/m²)
	<b>Internal Blockwork Partition (Below Ground)</b> 100mm aerated concrete block (7.2kN/m²) Suspended ground floor beam manufacturer's coursing bricks / bricks as required
	<b>Sloped Wall</b> 100mm aerated concrete block (7.2kN/m²) to underside of suspended ground floor beams

Refer to current Construction Specifications for further details.

**NB: 3.6N/m² Blockwork may be used below DPC subject to Divisional Consulting Engineers Approval.**



07.08.2025 GM AB See services intake added  
Rev: Date: By: Checked: Desc:

**TENDER**

**Ashberry Homes** **arkonassociates**

Luminous House, 300 South Row, Milton Keynes, MK9 2FR  
T: 01438 359816  
E: enquiries@arkonassociates.co.uk  
www.arkonassociates.co.uk

CLIENT: BELLWAY HOMES LTD. (NORTH LONDON)

PROJECT: FORSTER PARK, STEVENAGE (PHASE 2B & 2D-2)

WORKING DRAWINGS

TITLE: The Alyssum Life  
1026 ft² | 3b Semi | BLK1  
Block Foundation Layout Plots 523-525

SCALE: 1:50@A1 DATE: July 25 DRAWN BY: GM CHECKED: LJC

PROJ No: 5304 DWG No: AL3001-BLK1 REV: A

© ARKON ASSOCIATES LTD. THE DRAWING IS THE PROPERTY OF ARKON ASSOCIATES LTD. AND IS LOANED TO YOU BY THE CONTRACTOR THAT IT IS NOT TO BE REPRODUCED, COPIED, EITHER WHOLLY OR PARTIALLY, OR IN ANY MANNER WITHOUT THE WRITTEN CONSENT OF ARKON ASSOCIATES LTD. THE CONTRACTOR SHALL BE RESPONSIBLE FOR THE ACCURACY OF THE INFORMATION PROVIDED TO ANY OTHER PARTY BY THIS DRAWING. THE CONTRACTOR SHALL BE RESPONSIBLE FOR THE ACCURACY OF THE INFORMATION PROVIDED TO ANY OTHER PARTY BY THIS DRAWING. THE CONTRACTOR SHALL BE RESPONSIBLE FOR THE ACCURACY OF THE INFORMATION PROVIDED TO ANY OTHER PARTY BY THIS DRAWING.