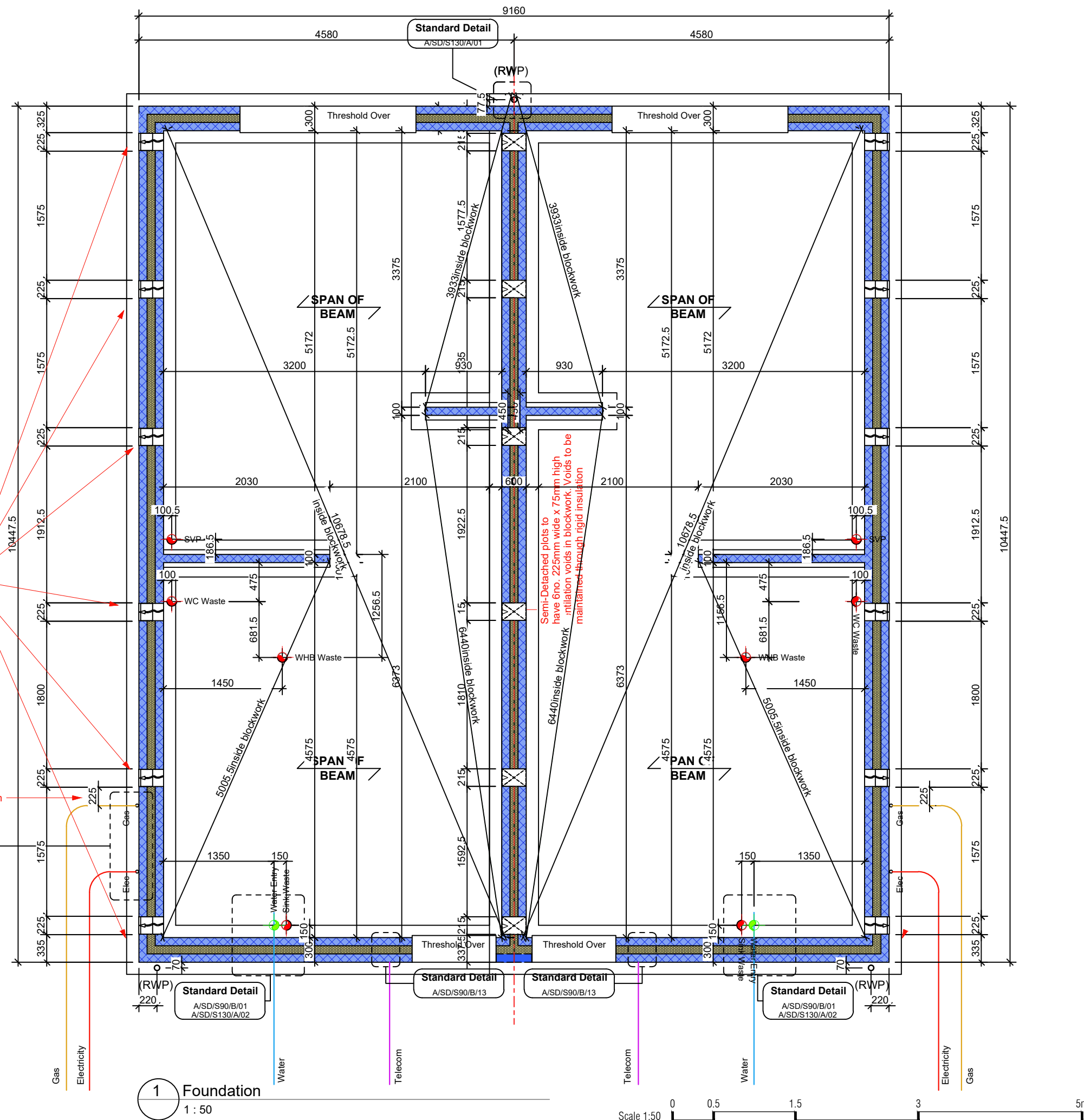


Substructure Wall Legend (100mm Cavity)

	Standard External Insulated Cavity Wall (Below Ground) 100mm blocks (7.3N/mm ²) upto 150mm below external ground level, then class B engineering brickwork (102.5mm) to DPC level 100mm cavity with expanded polystyrene board (thermal conductivity 0.038 W/m ² /K) 100mm aerated concrete block / coursing bricks (7.3N/mm ²)
	External Uninsulated Cavity Wall (To Garage etc - Below Ground) 100mm blocks (7.3N/mm ²) upto 150mm below external ground level, then class B engineering brickwork (102.5mm) to DPC level 100mm cavity 100mm aerated concrete block / coursing bricks (7.3N/mm ²)
	Party Wall (Below Ground) 100mm aircrete block (7.3N/mm ²) 100mm cavity with expanded polystyrene board (thermal conductivity 0.038 W/m ² /K) 100mm aircrete block (7.3N/mm ²)
	Internal Blockwork Partition (Below Ground) 100mm aerated concrete block (7.3N/mm ²) (Suspended ground floor beam manufacturer's coursing blocks / bricks as required)
	Sleeper Wall 100mm aerated concrete block (7.3N/mm ²) to underside of suspended ground floor beams

Refer to current Construction Specification for further details

NB. 3.6N/mm² Blockwork may be used below DPC subject to Divisional Consulting Engineers Approval.



6no Periscope Vents on this elevation to semi-detached properties only.

Air brick min 180mm from gas pipe

Rev: Date: By: Checked: Desc:

TENDER

Luminous House, 300 South Row, Milton Keynes. MK9 2FR
T: 01438 359816
E: enquiries@arkonassociates.co.uk
www.arkonassociates.co.uk

CLIENT: BELLWAY HOMES LTD. (NORTH LONDON)

PROJECT: FORSTER PARK, STEVENAGE (PHASE 2B & 2D-2)

WORKING DRAWINGS

TITLE: The Oxalis Life
876 ft² | 2b Semi | All Variants
Block Foundation Layout

SCALE: 1:50@A3 DATE: Aug 25 DRAWN BY: GM CHECKED: IJC

PROJ No: 5304 DWG No: OX3001-BLK REV: -