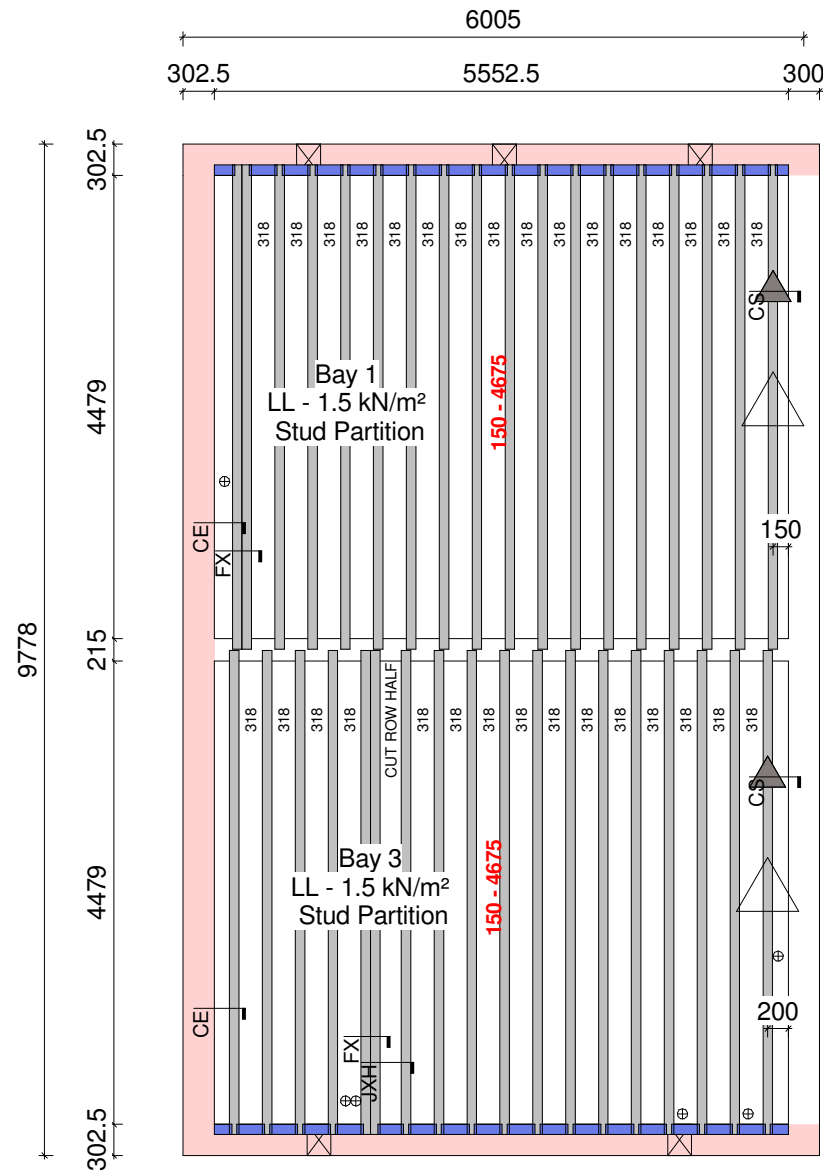


**DO NOT SCALE DRAWING**

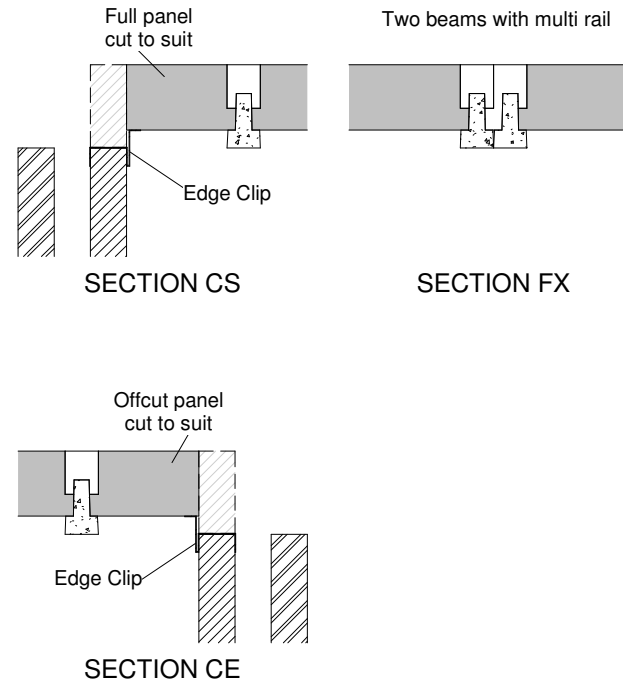


Installation Guide



This design has been produced using limited information to provide a quotation. Scaling of dimensions, assumption of loads, and positions of foundations may have been assumed.

Please check the design thoroughly before providing an approval, as issues found after delivery has been made may be chargeable.



Ancillaries Schedule		
Product Code	Description	Count
ANC-GT18F	GT18 540mm Infill Panel	8
ANC-GT18H	GT18 270mm Infill Panel	120
ANC-GT18MR	GT18 Multi Beam Rail	15
ANC-ESCGT18	GT18 Edge Support Clip	32
ANC-PES	Poly Edge Strip	50
ANC-LCB	100mm Large Closure Block	2
ANC-SCB	100mm Small Closure Block	32
ANC-AB1	G930 Terracotta Air Brick	5
ANC-UV	Telescopic U/Floor Vent	5

Joist Schedule			
Description	Joist Length	Bay Id	Count
150mm Floor Joist	4675	1	18
150mm Floor Joist	4675	3	18

Vent flow rates achieved	
6450	mm² Capacity
1592	mm²/m P (1500mm²/m MIN)
632	mm²/m² A (500mm²/m² MIN)

PANELS ON THIS DESIGN ARE	
GT18	White Label

THERMAL VALUES	
PERIMETER/AREA VALUE - 0.404	✔
TARGET U VALUE - 0.18 ACTUAL U VALUE - 0.15	

REV	DESCRIPTION	INI	DATE
b	Revised riser position	JA	07/06/22
a	Redrawn to suit latest plans	JA	29/04/22

TOTAL LENGTHS AND AREA		
150mm - Length	225mm - Length	Floor Area
168.300 m	0.000 m	50 m²

DESIGN CRITERIA (WHERE APPLICABLE)  
 FINISHES - 1.725kN/m² 75mm Steel Fibre/Mesh Reinforced Concrete Screed  
 LIVE LOAD (LL) - Refer To Bay Tag For Loads  
 OTHER INFILLS - EPS Panel  
 PARTITIONS - 0.5kN/m² Non Load Bearing Stud  
 PARTITIONS - 3kN/m Non Load Bearing Block  
 GARAGE FINISHES - 1.725kN/m² 75mm Concrete And A142 Mesh  
 GARAGE LOAD - 2.5kN/m² Imposed Load or 10kN Point Load  
 GARAGE INFILL BLOCK DENSITY - 1950kg/m³ MAX

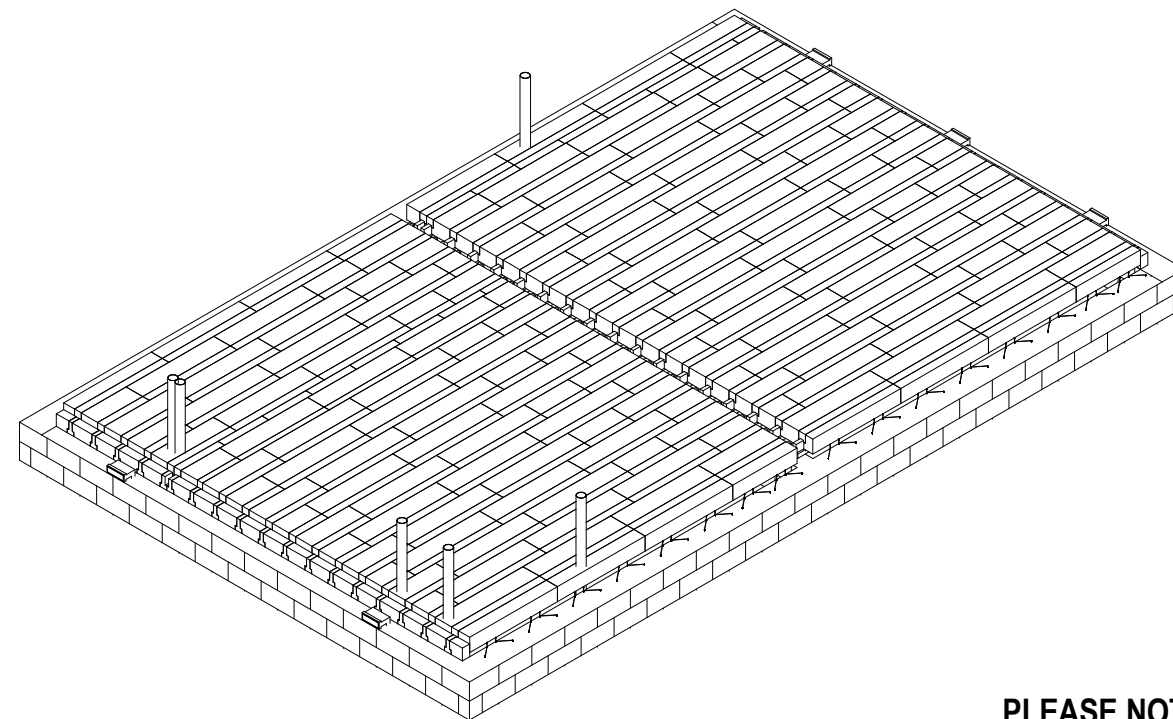
HOUSE TYPE **Granger**

SITE ADDRESS  
**Parcel C, Whittington Way  
 Bishop's Stortford  
 CM23 4EG**

DRAWN BY **James@litecast.co.uk** DATE **19/11/2021**

DRG NO. **228545-9-GT18** REV **b**

**PLEASE NOTE:**  
 Sections should be used to determine panel type for cut rows and all edges are created using full (540mm) panels.



**Drawing Legend (Where Applicable)**

All partitions not supported off a footing below are assumed to be 0.5kN/m² Max. Non-load bearing studding.

- Joist Start Layout Point
- Poly Start Layout Point
- Service Hole Position
- Suggested Void Ventilator Position
- Non Load Bearing 3kN/m MAX Blockwork
- Non Load Bearing 0.5kN/m² MAX Studwork
- Closure Block

All Closure Blocks Must Be Bedded

All Internal Bearing Channels Must Be Concrete Filled Before Screed Is Applied. Shuttering May Be Required For GT12 And GT18

Thru' Vents By Builder

150mm Floor Joists At 588mm Centres Unless Otherwise Stated (Poly)

318 150mm Floor Joists With 270mm Poly Panel Between (Poly)  
 225mm Floor Joists At 626mm Centres Unless Otherwise Stated (Poly)

356 225mm Floor Joists With 270mm Poly Panel Between (Poly)  
 150mm Floor Joists At 488mm Centres Unless Otherwise Stated (B&B)

263 150mm Floor Joists With Block 215mm Between (B&B)  
 225mm Floor Joists At 526mm Centres Unless Otherwise Stated (B&B)

301 225mm Floor Joists With Block 215mm Between (B&B)