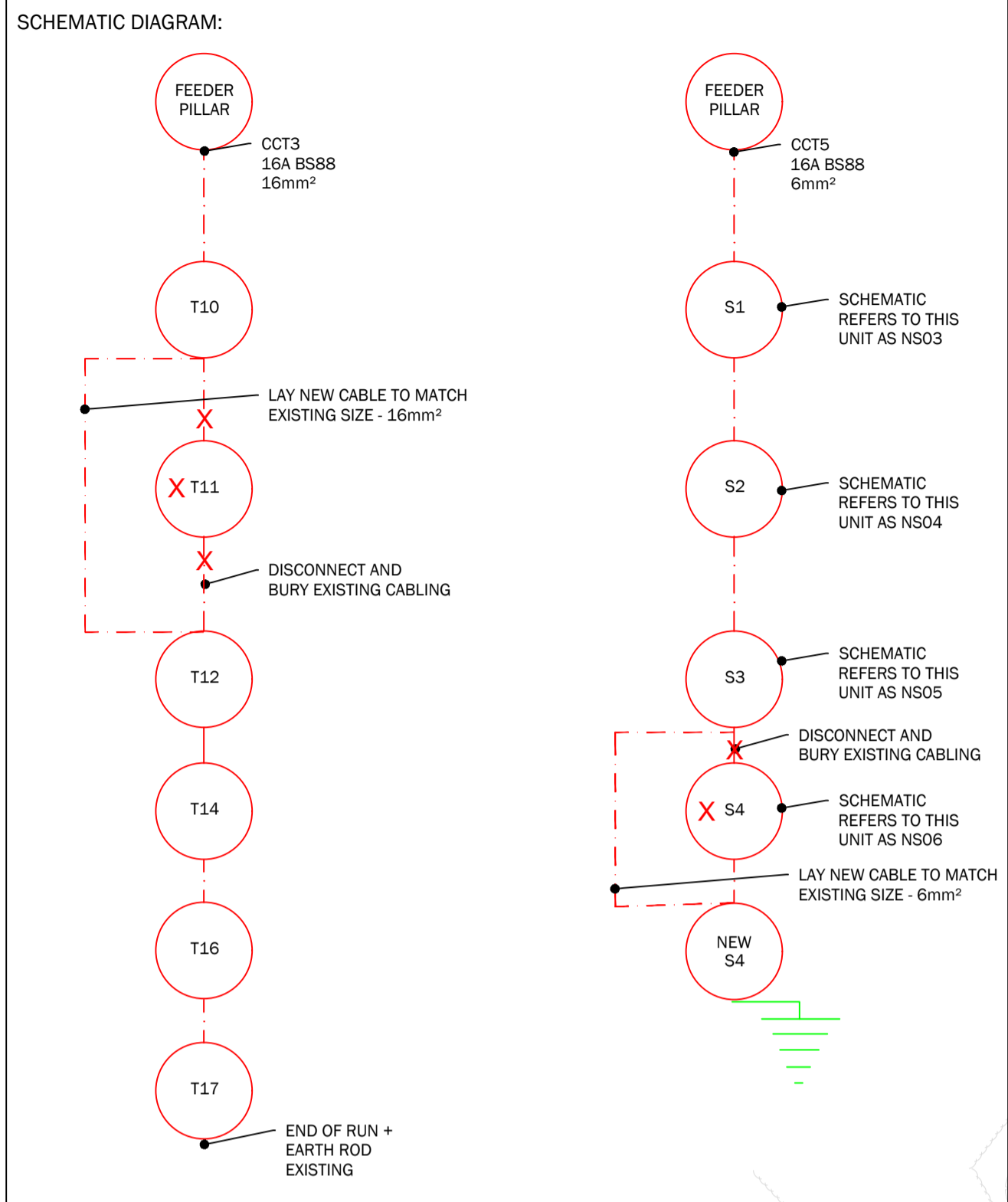
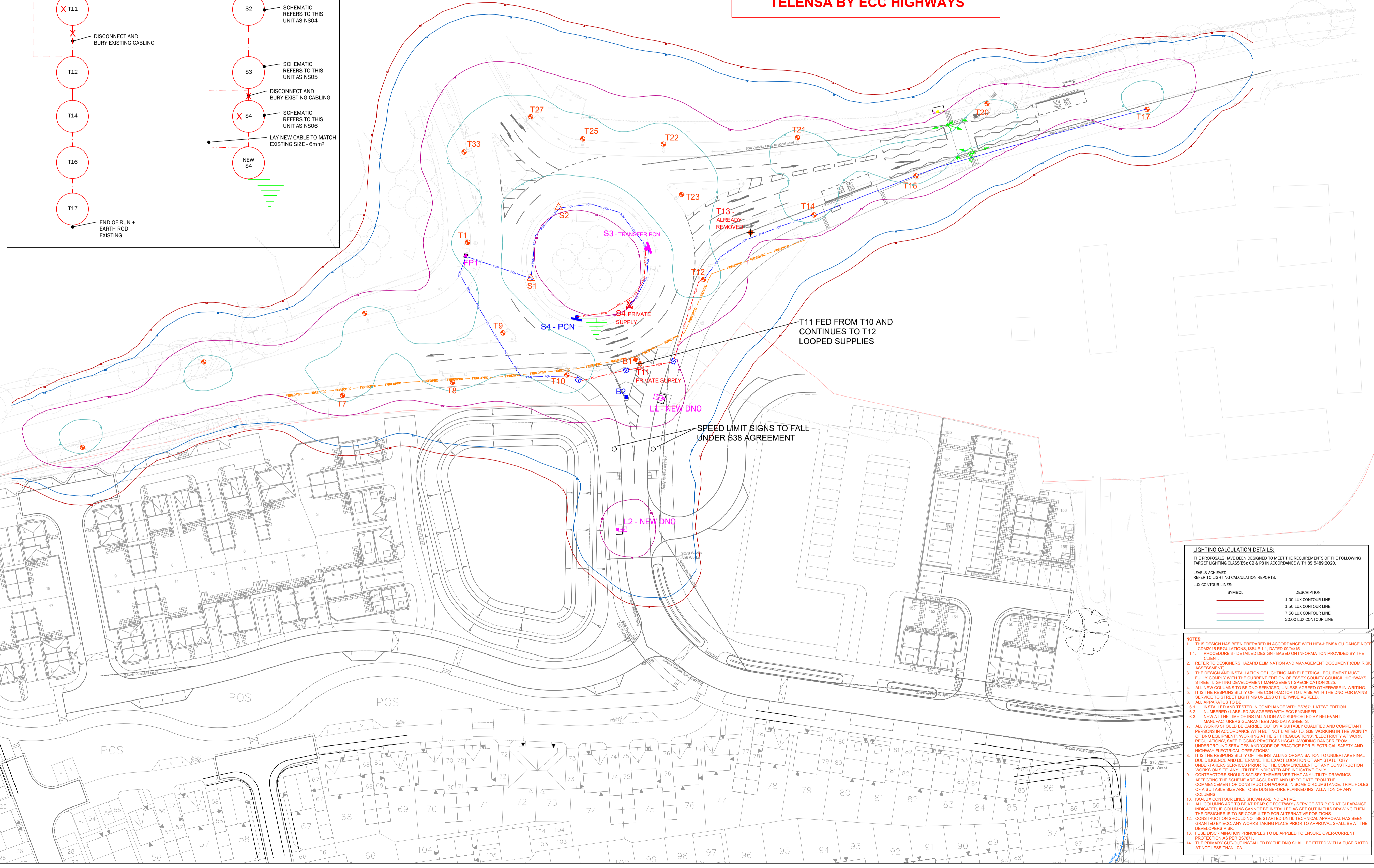


**AS PER ECC GUIDANCE: NO TREE SHALL BE LOCATED WITHIN 5M OF A PROPOSED COLUMN. TREE TO BE RELOCATED.**



**EXISTING UNITS T14, T16, T21 ARE TO BE INCREASED TO 100% OUTPUT VIA TELENESA BY ECC HIGHWAYS**



**LIGHTING NOTES:**

- SAFETY, HEALTH AND ENVIRONMENTAL INFORMATION**
- IN ADDITION TO THE HAZARDS/RISKS NORMALLY ASSOCIATED WITH THE TYPES OF WORK DETAILED ON THIS DRAWING, NOTE THE FOLLOWING SIGNIFICANT RISKS (REFERENCE SHALL ALSO BE MADE TO THE DESIGN RISK ASSESSMENT).
- ANY UTILITIES SHOWN ARE INDICATIVE. CONTRACTOR MUST REFER TO UP TO DATE UTILITY PLANS.
  - REFER TO CDM RISK ASSESSMENT.
- SYMBOL QUANTITY**
- PROPOSED COLUMN AND LANTERN:
- COLUMN: 8m TUBULAR GALVANISED STEEL LIGHTING COLUMN AS PER BS EN40 AND ECC HIGHWAYS STREET LIGHTING SPECIFICATION (APPENDIX 3.3.1)
- LANTERN: URBIS AMPERA EVO 3 FINISHED RAL7035
- LIGHT SOURCE: 40 LED 3000K 4000K NEUTRAL WHITE
- FLUX: 6.38lm
- WATTAGE: 44W
- OPTIC: 5393
- LANTERN MOUNTING: POST TOP - 76MM
- LANTERN INCLINATION: 0°
- CONTROL GEAR REF: LED DRIVER AS PER ECC SPECIFICATION
- ISOLATOR: DOUBLE POLE 25A ISOLATOR AS PER ECC HIGHWAYS STREET LIGHTING SPECIFICATION - CHARLES ENDRECT
- SWITCHING: 7 PIN NEMA SOCKET WITH TELENESA 5 PIN TELECELL REF: T2ELN-G-3 REFER TO TELENESA NOTES BELOW FOR DETAILS REGARDING TELENESA ID LABELS. NEW UNMETERED DNO SUPPLY
- SUPPLY: NEW UNMETERED DNO SUPPLY
- GLARE RATING: G3
- DISCONNECT AND REMOVE EXISTING AND LANTERN:
- SUPPLY: DISCONNECTION OF EXISTING SUPPLY
- SITE CLEARANCE: REMOVE EXISTING COLUMN AND LANTERN ONCE DISCONNECTION HAS TAKEN PLACE. ANY LED LANTERNS ARE TO BE RETURNED TO ECC HIGHWAYS DEPT.
- DISCONNECT AND REMOVE EXISTING SIGN POST AND SIGN LIGHT:
- SUPPLY: DISCONNECTION OF EXISTING SUPPLY
- SITE CLEARANCE: REMOVE EXISTING SIGN AND SIGN LIGHT ONCE DISCONNECTION HAS TAKEN PLACE.
- PROPOSED SIGN LIGHT - REFER TO SIGN SCHEDULE:
- POST: WIDE BASE GALVANISED STEEL POST (4m CUT TO SUIT)
- MOUNTING: MOUNTED IN HAL RETENTION SOCKET (DUCK FOOT / F-BEND TO SUIT CABLING)
- DAG #: SEE SIGN DRAWING
- MOUNTING HEIGHT: CUT TO SUIT
- LANTERN: SIMMONSIGN LED SW LUX SIGN LIGHT (3x1w)
- LANTERN MOUNTING: SIMMONSIGN SINGLE ARM BRACKET
- ISOLATOR: CHARLES ENDRECT DOUBLE POLE ISOLATOR
- SWITCHING: MINUTIME TELENESA T2ELT-FG-1 TELECELL COMPATIBLE WITH ECC CMS
- SUPPLY: NEW PRIVATE SUPPLY
- REPLACE EXISTING SIGN LIGHT AND POST - REFER TO SIGN SCHEDULE:
- POST: WIDE BASE GALVANISED STEEL POST (4m CUT TO SUIT)
- MOUNTING: MOUNTED IN HAL RETENTION SOCKET (DUCK FOOT / F-BEND TO SUIT CABLING)
- DAG #: SEE SIGN DRAWING
- MOUNTING HEIGHT: CUT TO SUIT
- LANTERN: SIMMONSIGN LED SW LUX SIGN LIGHT (3x1w)
- LANTERN MOUNTING: SIMMONSIGN SINGLE ARM BRACKET
- ISOLATOR: CHARLES ENDRECT DOUBLE POLE ISOLATOR
- SWITCHING: MINUTIME TELENESA T2ELT-FG-1 TELECELL COMPATIBLE WITH ECC CMS
- SUPPLY: TRANSFER EXISTING PRIVATE SUPPLY
- SITE CLEARANCE: REMOVE EXISTING POST AND SIGN LIGHT FOLLOWING TRANSFER OF SUPPLY
- PROPOSED BOLLARD / REFLECTIVE:
- PROPOSED GLASSON SIGNSMASTER BOLLARD - KEEP LEFT FACE MOUNTED IN RETENTION SOCKET
- PROPOSED BOLLARD / REFLECTIVE:
- PROPOSED GLASSON SIGNSMASTER BOLLARD - PLAIN FACE MOUNTED IN RETENTION SOCKET

**ELECTRICAL SUPPLIES:**

WHERE THE EXISTING CABLE IS BEING RETAINED THE CABLE SHALL UNDERGO AN ELECTRICAL INSULATION TEST AND TESTING TO BS7671 TO ENSURE SUITABILITY. IF THE INSTALLATION FAILS TESTING DESIGNER SHALL BE CONTACTED TO ARRANGE FOR CABLE UPGRADE DESIGN.

**NEW DUCTING AND CABLING:**

200MM HDPE ORANGE DUCT FOR PRIVATE CABLE NETWORK LAID AT A MINIMUM COVER OF 450MM IN FOOTPATH AND 750MM IN ROADWAY. CABLE SIZE TO MATCH EXISTING (REFER TO SCHEMATIC) XLPE/SWA/PVC/ULPE 3 CORE CABLE.

**PROPOSED ACCESS CHAMBER:**

ACCESS CHAMBER: NAL STAKKA BOX 450mm x 450mm x 620mm

**HARD STANDING REQUIREMENTS:**

UNITS T2 AND T2 ARE TO HAVE HARD STANDING AND SHALL BE AS PER ECC S38 STANDARD CONSTRUCTION DETAILS.

**PROPOSED EARTH ROD:**

EARTH ROD TO BE INSTALLED TO CONFORM WITH BS7671 AND BS7430.

**INDICATIVE CABLING ROUTE:**

EXISTING CABLE ROUTE IS ASSUMED.

**EXISTING SIGN:**

SHOWN FOR TIE-IN PURPOSES ONLY.

**EXISTING COLUMN:**

SHOWN FOR TIE-IN PURPOSES ONLY.

**TELENESA CENTRAL MANAGEMENT SYSTEM:**

THE TELECELL IS SUPPLIED WITH 3 BARCODE LABELS WITH UNIQUE IDENTIFICATION NUMBER OF EACH CELL. THE 3 BAR CODE LABELS SHALL BE USED AS FOLLOWS:

- FIXED TO THE TELECELL.
- LAMINATED AND SECURED INSIDE THE BASE COMPARTMENT OF THE LIGHTING COLUMN.
- REFER TO EITHER A COPY OF THE AS-BUILT DRAWING IDENTIFYING THE COLUMN WITH THE TELECELL NUMBER OR A SCHEDULE OF COLUMNS AND TELECELL NUMBERS. REFER TO CONNECTION SCHEDULE.

**UTILITIES:**

THE UTILITIES SHOWN ARE INDICATIVE AND HAVE BEEN DETAILED AS PER UTILITY PLANS PROVIDED. REFERENCE SHOULD BE MADE TO ALL UTILITY INFORMATION AVAILABLE. THE FOLLOWING UTILITIES ARE SHOWN (IF PRESENT) BY OVERHEAD, LV & HV OVERHEADS, UNDERGROUND HV, OIL PIPELINES AND MP GAS MAIN AS PER RJ BRIEF. IF THEY ARE NOT SHOWN BELOW THEN IT IS BELIEVED THAT THE UTILITY IS NOT PRESENT ON SITE. PROCEED WITH CAUTION AND ALWAYS DIG TO EXPECT.

— FIBREOPTIC — INDICATIVE ROUTE - REFER TO UTILITY PLANS

**WHERE IT IS PROPOSED THAT EXISTING PRIVATE CABLE NETWORK MAY BE RETAINED OR MODIFIED AS PART OF THE PERMANENT WORKS, ELECTRICAL TESTING TO BS7671 SHALL BE UNDERTAKEN TO ENSURE SUITABILITY. IF FOUND THAT THE CABLE TO BE RETAINED IS NOT SUITABLE THEN IT SHALL BE REPLACED.**

**A LOOP IN/OUT PRIVATE CABLE SYSTEM SHALL BE MAINTAINED; NO JOINTS SHALL BE USED IN ANY NEW OR EXISTING CABLING**

**LIGHTING CALCULATION DETAILS:**

THE PROPOSALS HAVE BEEN DESIGNED TO MEET THE REQUIREMENTS OF THE FOLLOWING TARGET LIGHTING CLASSIFICATION: C2 & P3 IN ACCORDANCE WITH BS 5489:2020.

LEVELS ACHIEVED: REFER TO LIGHTING CALCULATION REPORTS.

SYMBOL	DESCRIPTION
—	1.00 LUX CONTOUR LINE
—	1.50 LUX CONTOUR LINE
—	7.50 LUX CONTOUR LINE
—	20.00 LUX CONTOUR LINE

**NOTES:**

- THIS DESIGN HAS BEEN PREPARED IN ACCORDANCE WITH HEA/HMSA GUIDANCE NOTE COM2015 REGULATIONS, ISSUE 1.1, DATED 09/04/15
- PROCEDURE 3 - DETAILED DESIGN - BASED ON INFORMATION PROVIDED BY THE CLIENT
- REFER TO DESIGNERS HAZARD ELIMINATION AND MANAGEMENT DOCUMENT (CDM RISK ASSESSMENT)
- THE DESIGN AND INSTALLATION OF LIGHTING AND ELECTRICAL EQUIPMENT MUST FULLY COMPLY WITH THE CURRENT EDITION OF ESSEX COUNTY COUNCIL HIGHWAYS STREET LIGHTING DEVELOPMENT MANAGEMENT SPECIFICATION 2020.
- ALL NEW COLUMNS TO BE DNO SERVICED, UNLESS AGREED OTHERWISE IN WRITING. IT IS THE RESPONSIBILITY OF THE CONTRACTOR TO LAISE WITH THE DNO FOR MAINS SERVICE TO STREET LIGHTING UNLESS OTHERWISE AGREED.
- ALL APPARATUS TO BE:
  - INSTALLED AND TESTED IN COMPLIANCE WITH BS7671 LATEST EDITION.
  - NUMBERED / LABELED AS AGREED WITH ECC ENGINEER.
  - NEW AT THE TIME OF INSTALLATION AND SUPPORTED BY RELEVANT MANUFACTURERS GUARANTEES AND DATA SHEETS.
- ALL WORKS SHOULD BE CARRIED OUT BY A SUITABLY QUALIFIED AND COMPETENT PERSONS IN ACCORDANCE WITH BUT NOT LIMITED TO, C39 WORKING IN THE VICINITY OF DNO EQUIPMENT, WORKING AT HEIGHT REGULATIONS, ELECTRICITY AT WORK REGULATIONS, SAFE DIGGING PRACTICES HSG47 AVOIDING DANGER FROM UNDERGROUND SERVICES AND CODES OF PRACTICE FOR ELECTRICAL SAFETY AND HIGHWAY ELECTRICAL OPERATIONS
- IT IS THE RESPONSIBILITY OF THE INSTALLING ORGANISATION TO UNDERTAKE FINAL DUE DILIGENCE AND DETERMINE THE EXACT LOCATION OF ANY STATUTORY UNDERTAKERS SERVICES PRIOR TO THE COMMENCEMENT OF ANY CONSTRUCTION WORKS ON SITE. ANY UTILITIES INDICATED ARE INDICATIVE ONLY. CONTRACTORS SHOULD SATISFY THEMSELVES THAT ANY UTILITY DRAWINGS AFFECTING THE SCHEME ARE ACCURATE AND UP TO DATE FROM THE COMMENCEMENT OF CONSTRUCTION WORKS. IN SOME CIRCUMSTANCE, TRIAL HOLES OF A SUITABLE SIZE ARE TO BE DIG BEFORE PLANNED INSTALLATION OF ANY COLUMNS.
- ISOLUX CONTOUR LINES SHOWN ARE INDICATIVE
- ALL COLUMNS ARE TO BE AT REAR OF FOOTWAY / SERVICE STRIP OR AT CLEARANCE INDICATED. IF COLUMNS CANNOT BE INSTALLED AS SET OUT IN THIS DRAWING THEN THE DESIGNER IS TO BE CONSULTED FOR ALTERNATIVE POSITIONS.
- CONSTRUCTION SHOULD NOT BE STARTED UNTIL TECHNICAL APPROVAL HAS BEEN GRANTED BY ECC. ANY WORK TAKING PLACE PRIOR TO APPROVAL SHALL BE AT THE DEVELOPERS RISK.
- FUSE DISCRIMINATION PRINCIPLES TO BE APPLIED TO ENSURE OVER-CURRENT PROTECTION AS PER BS7671.
- THE PRIMARY CABLE INSTALLED BY THE DNO SHALL BE FITTED WITH A FUSE RATED AT NOT LESS THAN 10A.

**FOR APPROVAL**

Williams Lighting Consultants Ltd.



SITE: S278 STORTFORD ROAD GREAT DUNMOW

TITLE: PROPOSED ADOPTABLE STREET LIGHTING

SCALE AT A1: 1:500 DATE: 21.10.25 DRAWN: PW CHECKED: LD

PROJECT NO: WLC1410 DRAWING NO: WLC1410-1300-01 REVISION: R3