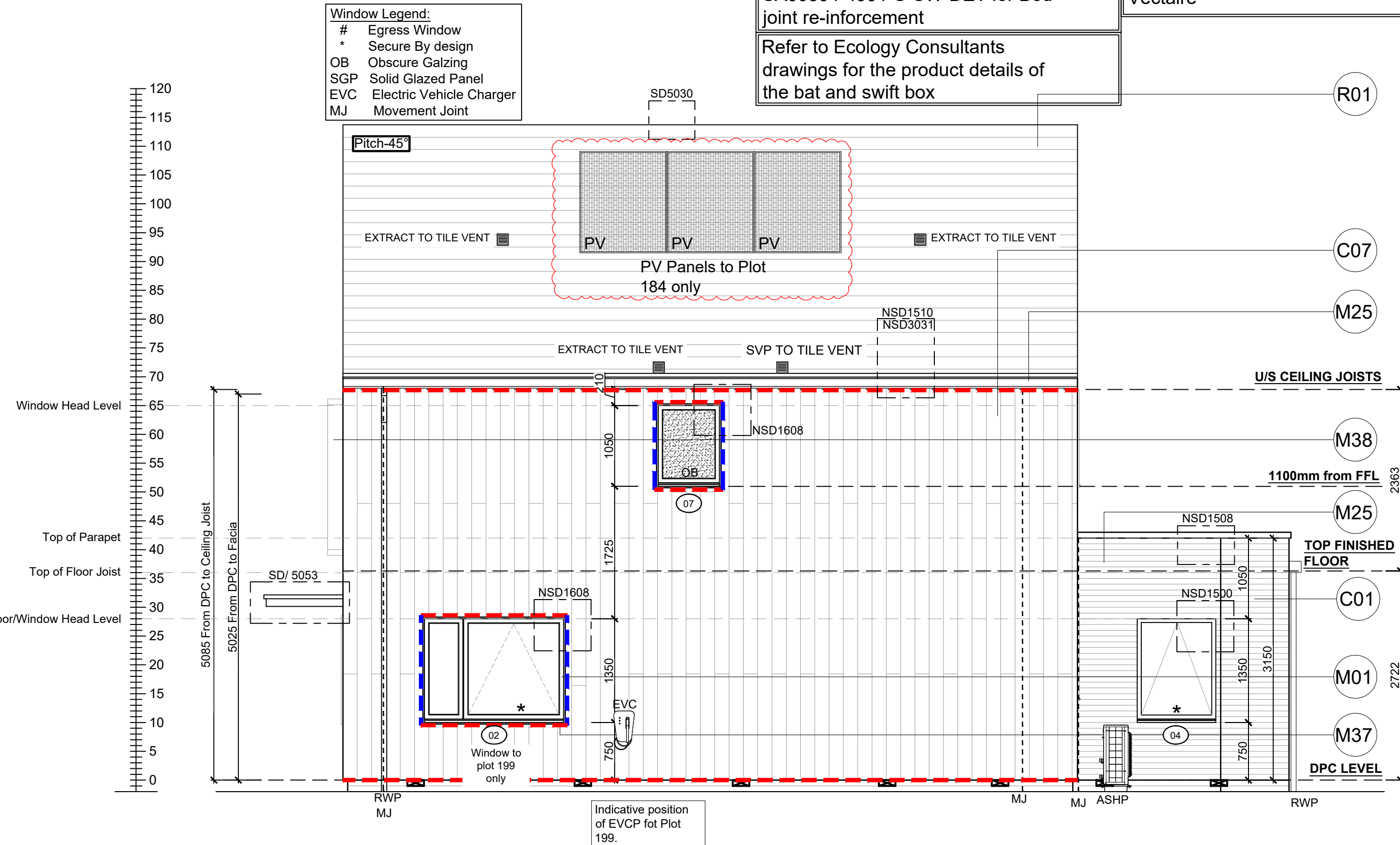


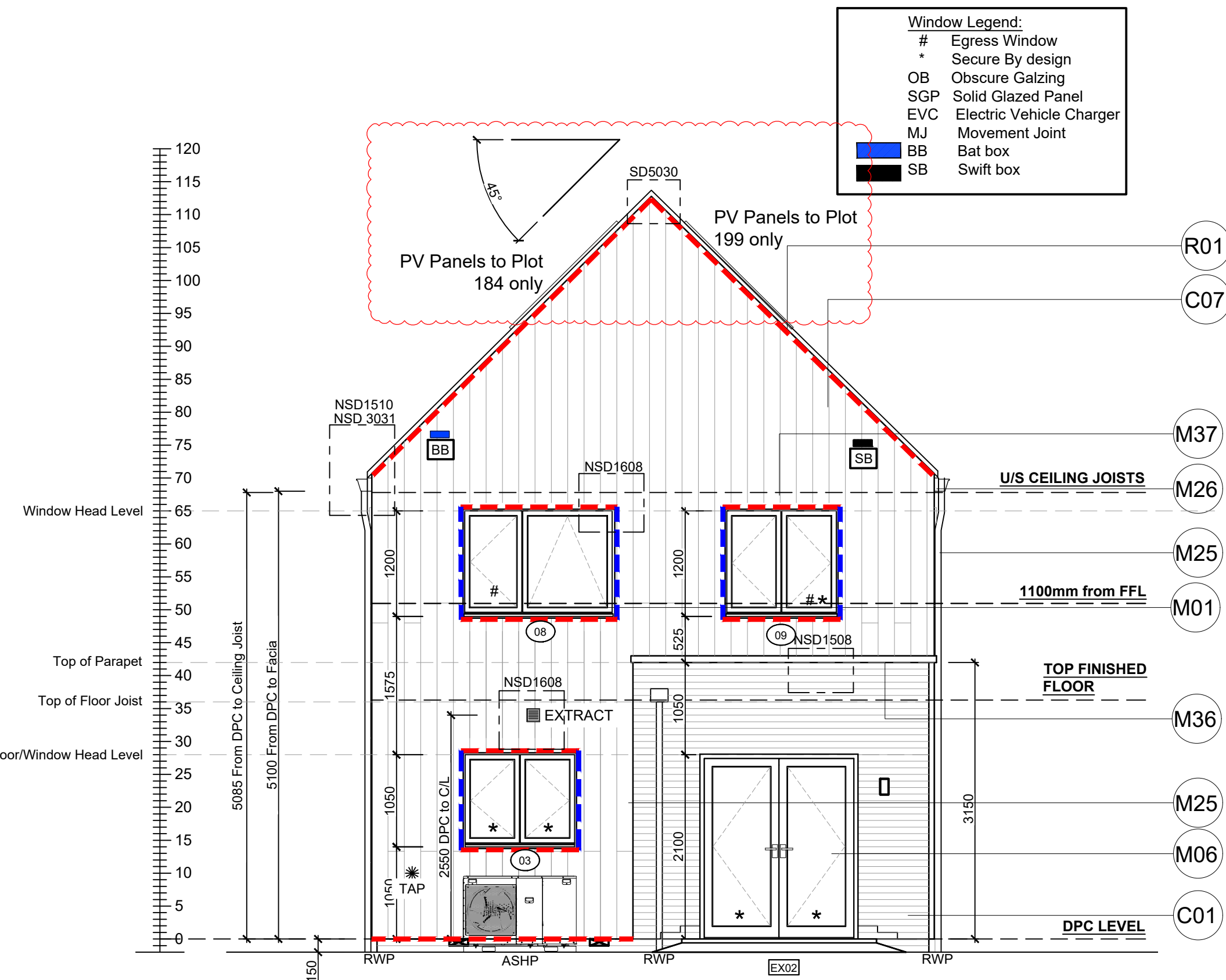
FRONT ELEVATION

SCALE 1:50



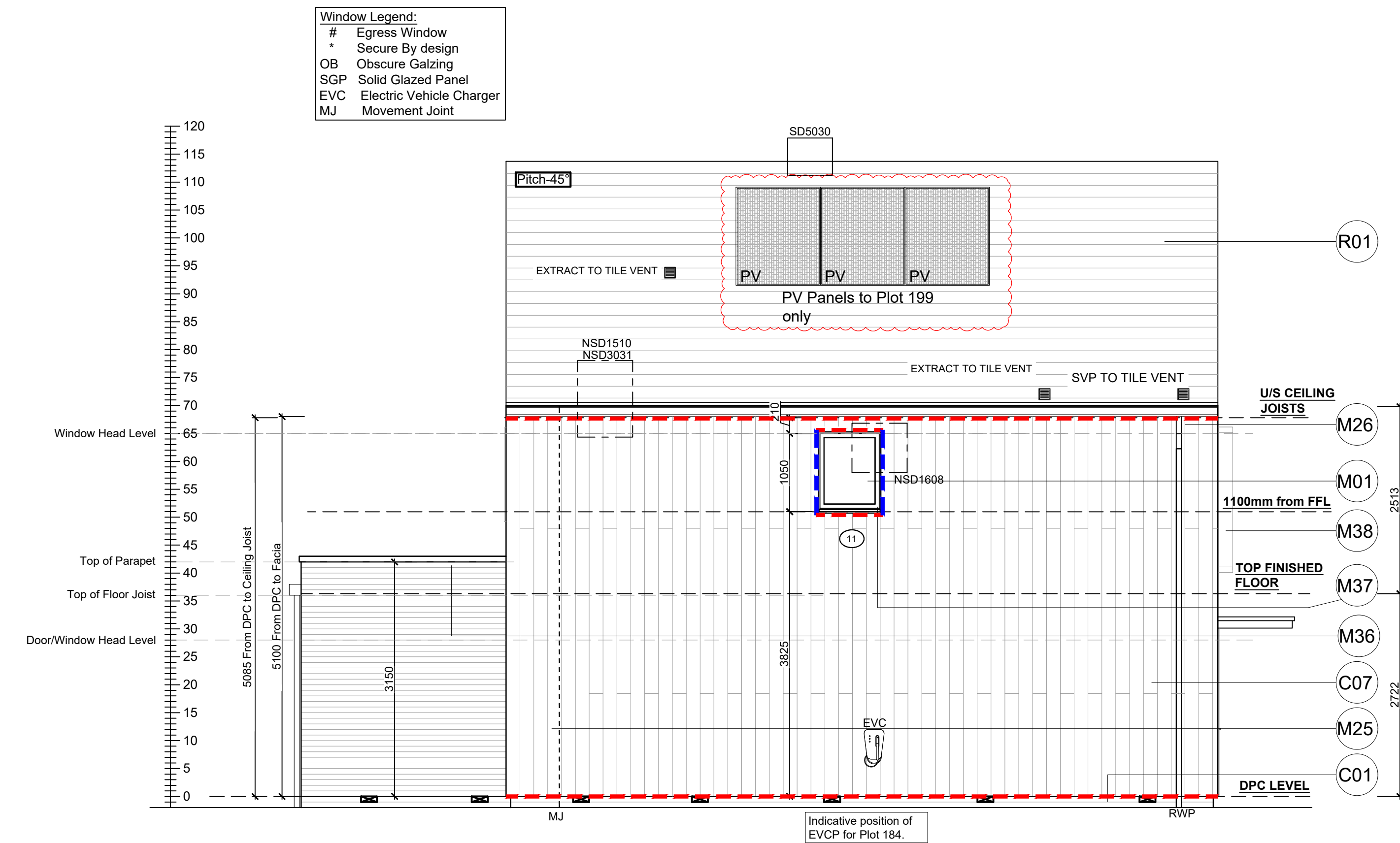
SIDE ELEVATION

SCALE 1:50



REAR ELEVATION

SCALE 1:50



SIDE ELEVATION

SCALE 1:50

Weatherboard / Tile Hung - Cavity Fire Barrier Legend:

- - - Dashed line denotes Tenmat VFB Plus intumescent cavity fire barrier.
- - - Dashed line denotes Tenmat NVFB LD cavity fire barrier.

Refer to SE Drawings
SA00394-4991-S-SW-DET for Bed
joint re-inforcement

Refer to Ecology Consultants
drawings for the product details of
the bat and swift box

Extract locations to be confirmed by
Vectaire

Notes

All dimensions to be checked on site prior to the commencement of construction and any discrepancy should be reported to the Site Manager.

This drawing may not be reproduced in any part or form without written consent.

All copyrights reserved.

Sub-Contractors MUST ensure that they have the latest issue drawing before they commence work on site.

This drawing is to be read in conjunction with all relevant Specifications, schedules and Engineers details.

RWP/MJ positions to be finalised on Architects drawings on an individual site by site basis

Meter positions to be finalised on Architects drawings on an individual site by site basis

Material Key

Key	Materials
C01	Refer to EMS for plot specific brick colour
C07	Smooth Fibre cement timber effect vertical boarding - Hardie Plank "Midnight Black" or similar
M01	Window frame - RAL 7015
M06	Framed glazed door - RAL 7015
M12	Timber-effect door with vertical panelling and glazed fanlight - RAL 7015
M25	Rainwater goods - dark grey
M26	Fascia board - RAL 7015
M36	Powder coated aluminium coping with fall to inside - RAL 7015
M37	Minimum 20mm thick board forming lining to window recess - painted RAL 9005 or similar to match vertical boarding M
M38	Slim profile extruded surround fixed into window recess and projecting 200mm from wall outer face - RAL 7015
M40	Slim profile powder coated aluminium entrance canopy - RAL 7015
R01	Slate effect plain tile - grey
R03	Skylight - RAL 7015
R05	Flat roof membrane - grey

N	24.01.25	PV Panels added	SK
M	19.11.24	Detail Ref tags co-ordinated.	SK
		Window head levels amended	ZJ
L	09.10.24	Weatherboarding / Tile hung cavity fire barriers added in accordance with email dated 03.09.24	DF
		Window removed from plot 184 due to boundary prok	ZJ
K	23.09.24	EVCP for Plot 184 moved to match floor plans.	GC
		External door heights revised to 2100mm o/a frame.	
J	09.08.24	ASHP added. Ext Tap position revised. Win 03 ht amended. Material legend amended.	SK
I	22.07.24	All First fl win head ht and Win 06 transome height amended to comply with Part O. FFL dims revised	
		Dims Rod revised, overall building height revised.	
		Canopy ref added. Elec meter location revised.	
		Parapet dim amended. Win 03 ht amended. ASHP added.	
Rev	Date	Description	Init.



Job title

Brooklands College
Weybridge

Drawing title

House Type 1 (Fir)
Plots: 184 & 199
Elevations

Scale 1:50 @ A1

Date May 2023

Rev. N

Drawn RR

Dwg No.
SA00394-0004-A-HT1-ELE