

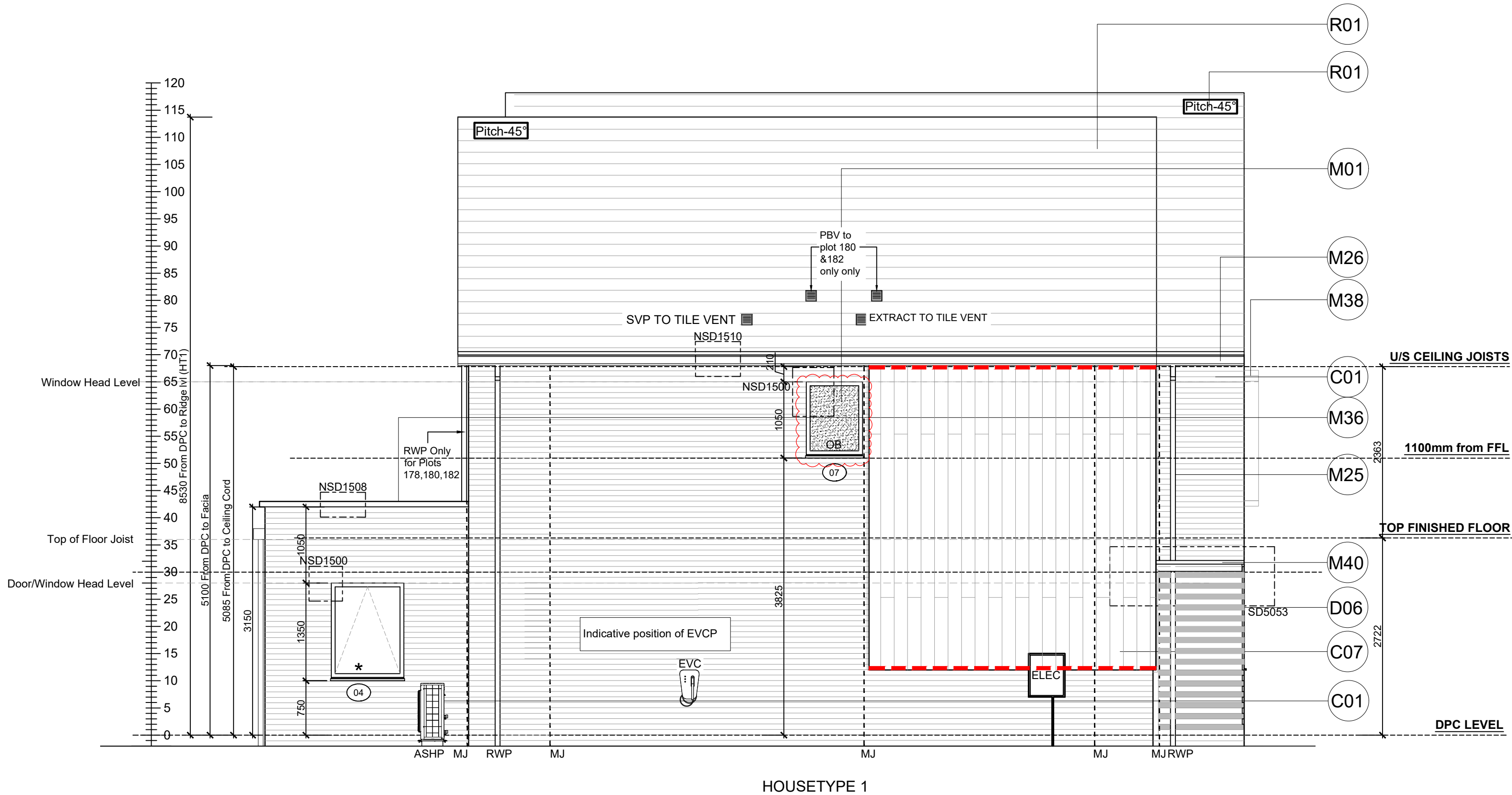
Window Legend:	
#	Egress Window
*	Secure By design
OB	Obscure Galzing
SGP	Solid Glazed Panel
EVC	Electric Vehicle Charger
MJ	Movement Joint
BB	Bat box
SB	Swift box



### REAR ELEVATION

SCALE 1:50

Window Legend:	
#	Egress Window
*	Secure By design
OB	Obscure Galzing
SGP	Solid Glazed Panel
EVC	Electric Vehicle Charger
MJ	Movement Joint
BB	Bat box
SB	Swift box
PBV	Purge Box Vent



### SIDE ELEVATION

SCALE 1:50

Extract locations to be confirmed by Vectaire

Refer to SE Drawings  
SA00394-4564-S-HTSemi 1/ Semi  
1A-SS for Bed joint re-inforcement

Notes  
All dimensions to be checked on site prior to the commencement of construction and any discrepancy should be reported to the Site Manager.

This drawing may not be reproduced in any part or form without written consent.

All copyrights reserved.

Sub-Contractors MUST ensure that they have the latest issue drawing before they commence work on site.

This drawing is to be read in conjunction with all relevant Specifications, schedules and Engineers details.

RWP/MJ positions to be finalised on Architects drawings on an individual site by site basis

Meter positions to be finalised on Architects drawings on an individual site by site basis

#### Material Key

Key	Material
C01	Refer to EMS for plot specific brick colour.
C06	Clay-effect plain hung tile - burnt orange
C07	Fibre cement timber effect vertical boarding - Hardie Plank "Midnight Black" or similar
D06	Alternating 25mm horizontal recessed brick detail - to match facing brick
M01	Window frame - RAL 7015
M06	Framed glazed door - RAL 7015
M12	Timber-effect door with vertical panelling and glazed fanlight - RAL 7015
M25	Rainwater goods - dark grey
M26	Fascia board - RAL 7015
M36	Powder coated aluminium coping with fall to inside - RAL 7015
M37	Minimum 20mm thick board forming lining to window recess - painted RAL 9005 or similar to match vertical boarding M
M38	Slim profile extruded surround fixed into window recess and projecting 200mm from wall outer face - RAL 7015
M40	Slim profile powder coated aluminium entrance canopy - RAL 7015
R01	Slate effect plain tile - grey
R02	Clay effect plain tile - burnt orange
R03	Skylight - RAL 7015
R05	Flat roof membrane - grey

N	28.07.25	Window 07 opening graphics indicated.	DF
M	25.04.25	Purge Box vents co-ordinated. Window legend revised.	SK
L	19.11.24	Window head level amended	ZJ
K	09.10.24	Weatherboarding / Tile hung cavity fire barriers.	DF
		added in accordance with email dated 03.09.24	
J	19.09.24	EVCP positions clarified to suit site.	GC
		Ext door ht revised to 2100	
I	09.08.24	ASHP added. Ext Tap position revised. Win 03	SK
		height revised. Material Key updated. Ecology feature	
		key & elevations co-ordinated.	
H	24.07.24	All First fl win head ht amended to comply with	SK
		Part O. FFL dims revised, Parapet dim amended	
		Dims Rod revised, overall building height revised.	
		RWP position amended. Hopper position amended.	
G	01.07.24	RWP location amended as per Clients Comments	SK
		dated 22.05.24.	
Rev	Date	Description	Init.

CALA

Job title  
Brooklands College  
Weybridge

Drawing title  
HT Semi 1A  
HT1 (Fir) & HT4(Laurel)  
Plots: 176/177 178/179 180/181 182/183  
Elevations

Scale 1:50 @ A1 Date August 2023

Rev. N Drawn RR

Dwg No.  
SA00394-0195-A-SEMI1A-ELE

Weatherboard / Tile Hung - Cavity Fire Barrier Legend:	
---	Dashed line denotes Tenmat VFB Plus intumescent cavity fire barrier.
---	Dashed line denotes Tenmat NVFB LD cavity fire barrier.