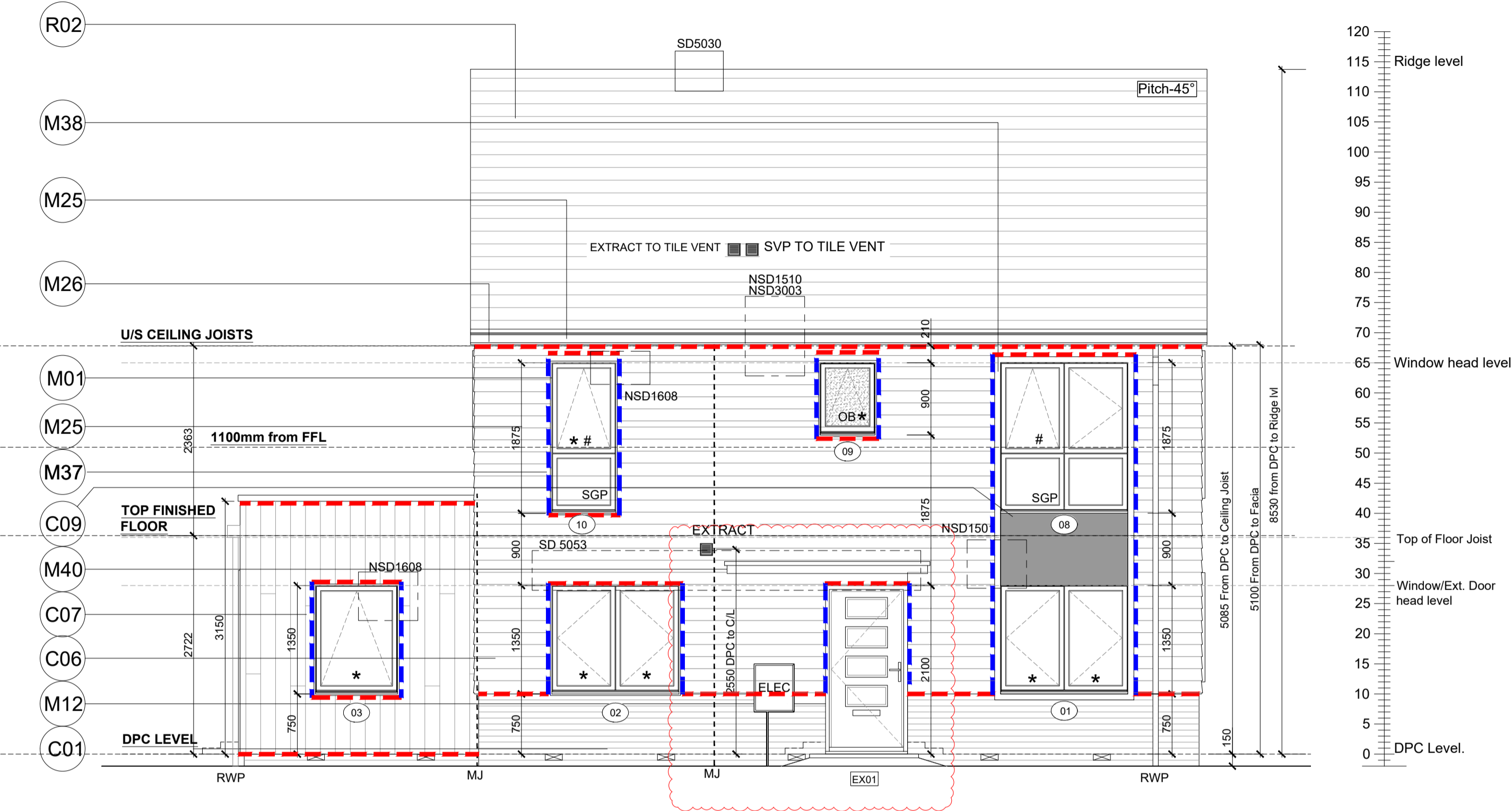
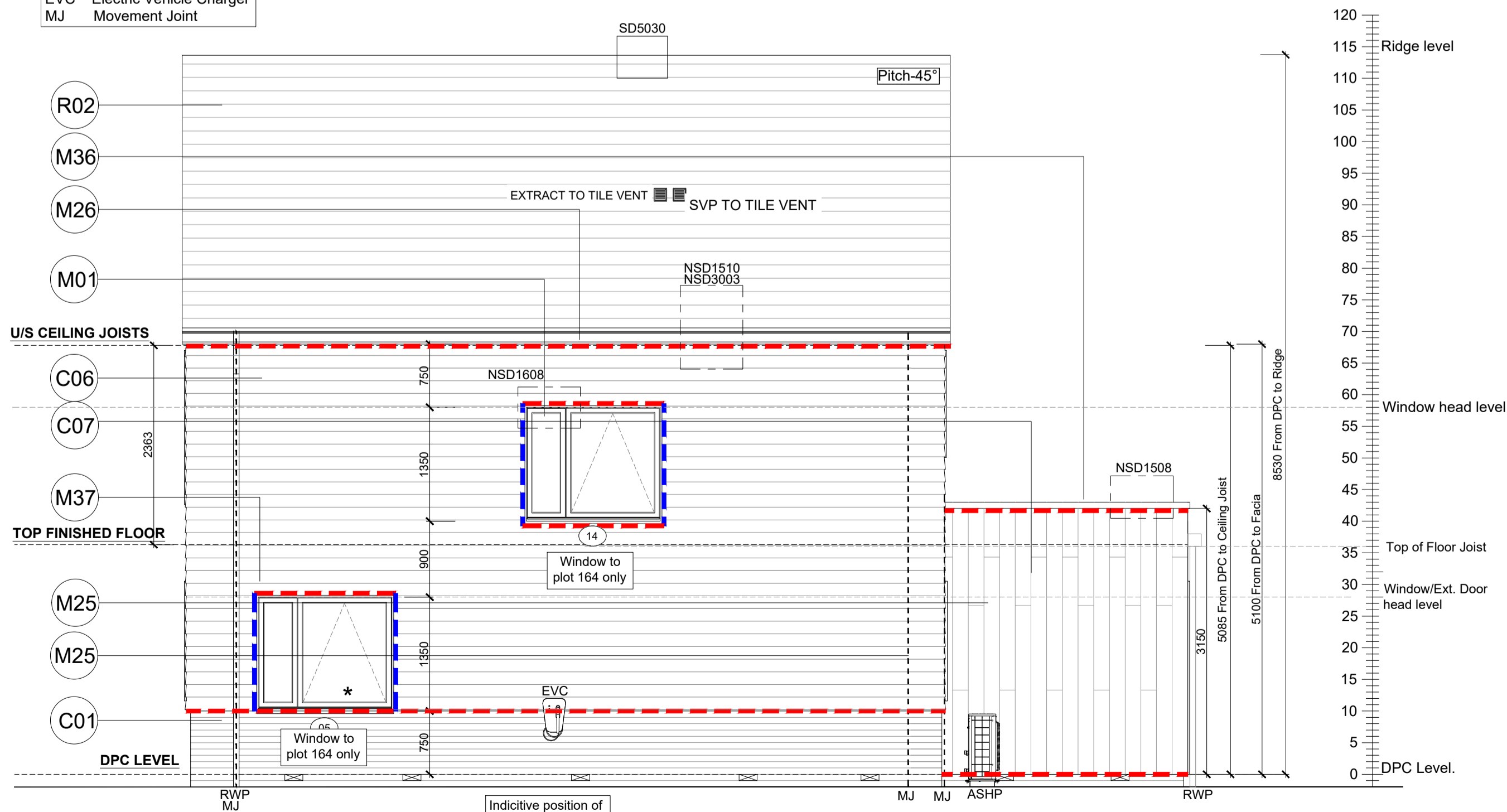


Window Legend:
Egress Window
* Secure By design
OB Obscure Galzing
SGP Solid Glazed Panel
EVC Electric Vehicle Charger
MJ Movement Joint



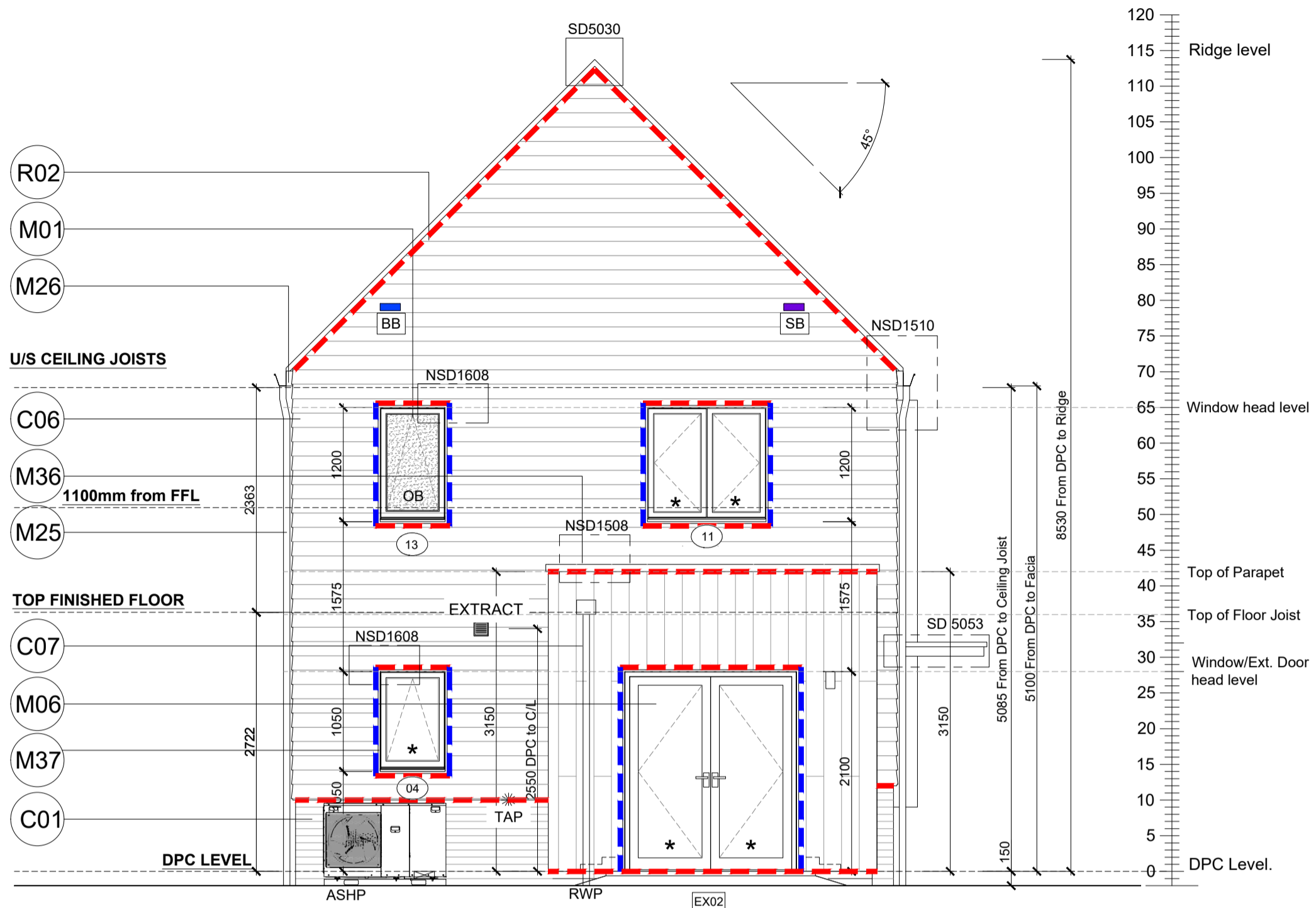
FRONT ELEVATION
SCALE 1:50

Window Legend:
Egress Window
* Secure By design
OB Obscure Galzing
SGP Solid Glazed Panel
EVC Electric Vehicle Charger
MJ Movement Joint



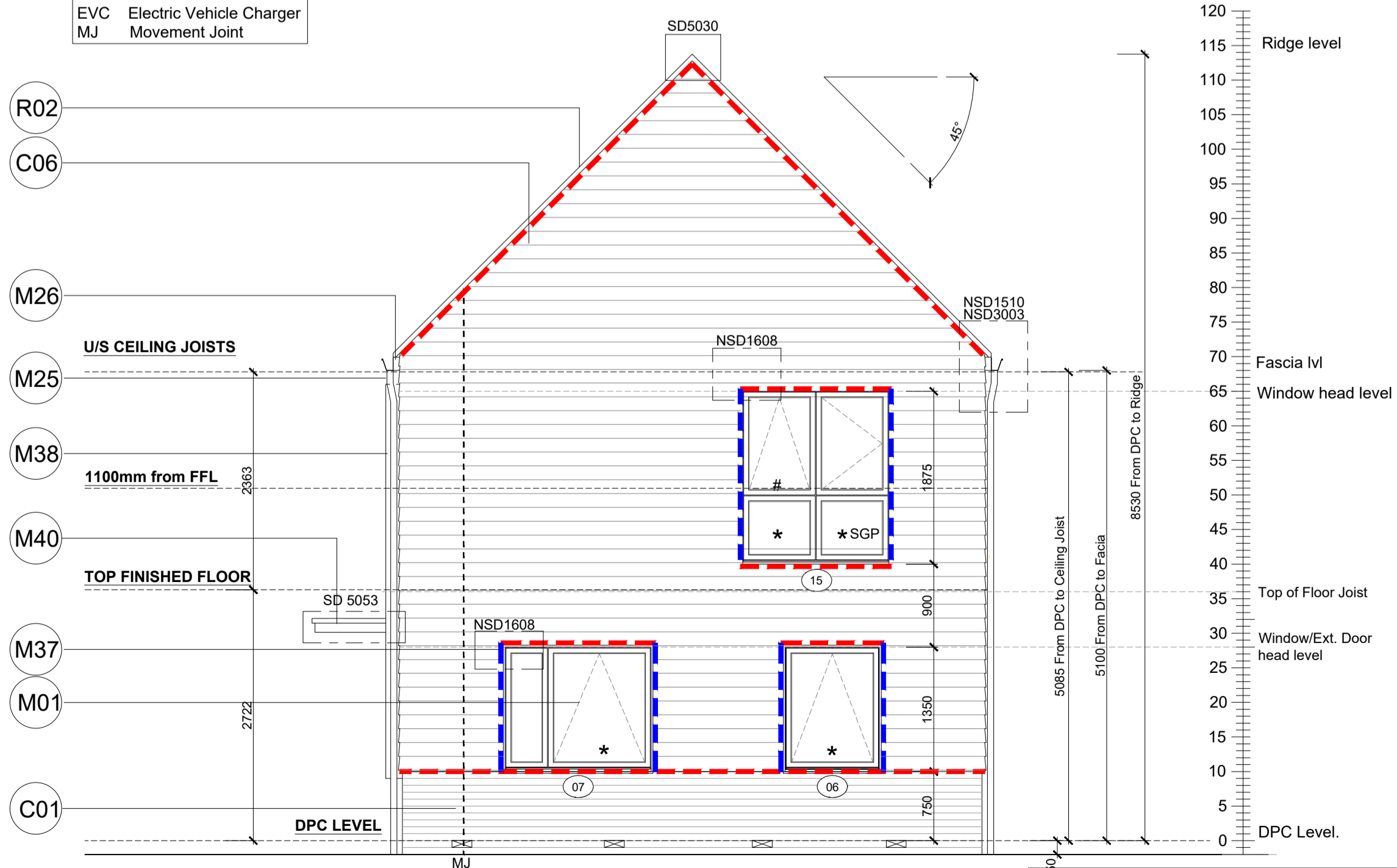
REAR ELEVATION
SCALE 1:50

Window Legend:
Egress Window
* Secure By design
OB Obscure Galzing
SGP Solid Glazed Panel
EVC Electric Vehicle Charger
MJ Movement Joint
BB Bat box
SB Swift box



SIDE ELEVATION
SCALE 1:50

Window Legend:
Egress Window
* Secure By design
OB Obscure Galzing
SGP Solid Glazed Panel
EVC Electric Vehicle Charger
MJ Movement Joint



SIDE ELEVATION
SCALE 1:50

Weatherboard / Tile Hung - Cavity Fire Barrier Legend:
- - - Dashed line denotes Tenmat VFB Plus intumescent cavity fire barrier.
- - - Dashed line denotes Tenmat NVFB LD cavity fire barrier.

Extract locations to be confirmed by Vectaire
Refer to SE Drawings SA00394-4991-S-SW-DET for Bed joint re-inforcement
Refer to Ecology Consultants drawings for the product details of the bat and swift box

RWP/MJ positions to be finalised on Architects drawings on an individual site by site basis
Meter positions to be finalised on Architects drawings on an individual site by site basis
Additional course of BJR required at 225 vertical centres in the outer leaf above and below openings as per Structural Engineers details

Notes
All dimensions to be checked on site prior to the commencement of construction and any discrepancy should be reported to the Site Manager.
This drawing may not be reproduced in any part or form without written consent.
All copyrights reserved.
Sub-Contractors MUST ensure that they have the latest issue drawing before they commence work on site.

This drawing is to be read in conjunction with all relevant Specifications, schedules and Engineers details.

Material Key	
Key	Material
C01	Refer to EMS for plot specific brick colour
C06	Marley Double Camber plain hung tile-burnt orange
C07	Smooth Fibre cement timber effect vertical boarding - Hardie Plank "Midnight Black" or similar
C09	Powder coated aluminium panel - RAL 7015
M01	Window frame - RAL 7015
M06	Framed glazed door - RAL 7015
M09	Door with glazed fanlight and door panel with face-applied 45 degree angled texture to coordinate with brick detailing - RAL 7015
M12	Timber-effect door with vertical panelling and glazed fanlight - RAL 7015
M25	Rainwater goods - dark grey
M26	Fascia board - RAL 7015
M36	Powder coated aluminium coping with fall to inside - RAL 7015
M37	Minimum 20mm thick board forming lining to window recess - painted RAL 9005 or similar to match vertical boarding M
M38	Slim profile extruded surround fixed into window recess and projecting 200mm from wall outer face - RAL 7015
M40	Slim profile powder coated aluminium entrance canopy - RAL 7015
R01	Slate effect plain tile - grey
R02	Clay effect plain tile - burnt orange
R03	Skylight - RAL 7015
R05	Flat roof membrane - grey
R07	Plain tile - colour varies

O	14.04.25	Brick panel near the door omitted. Canopy adjusted	SK
N	28.02.25	Canopy width amended.	SK
M	05.01.25	Tile hanging taken back to the electric meter. Part ext wall changed to brick	SK
L	06.11.24	Detail Ref tags co-ordinated. Window head levels amended	SK
K	09.10.24	Weatherboarding / Tile hung cavity fire barriers added in accordance with email dated 03.09.24	DF
J	19.09.24	Win 05 & 14 to plot 164 only	ZJ
I	09.08.24	EVCP for Plot 175 removed as this will be remote. External door heights revised to 2100mm o/a frame.	GC
H	24.07.24	ASHP added. Ext Tap repositioned.	SK
G	19.04.24	Win 04 ht amended.	SK
Rev	Date	Description	Init.



Job title
Brooklands College
Weybridge

Drawing title
House Type 2
Everglade Type 1
Plots: 164 & 175
Elevations

Scale
1:50 @ A1

Date
Aug 2023

Rev.
O

Drawn
SK

Dwg No.
SA00394-0010-A-HT2-ELE