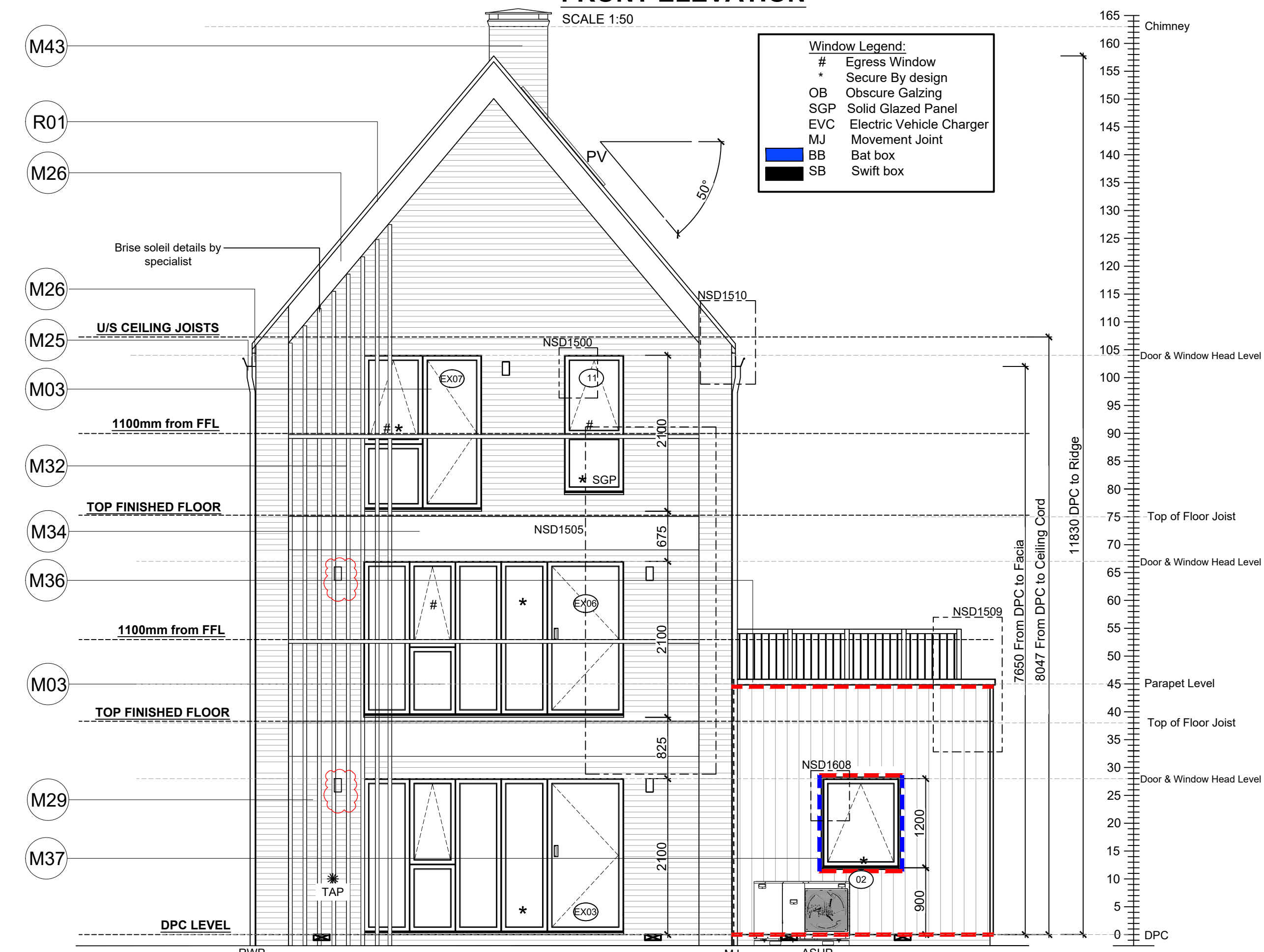


FRONT ELEVATION

SCALE 1:50

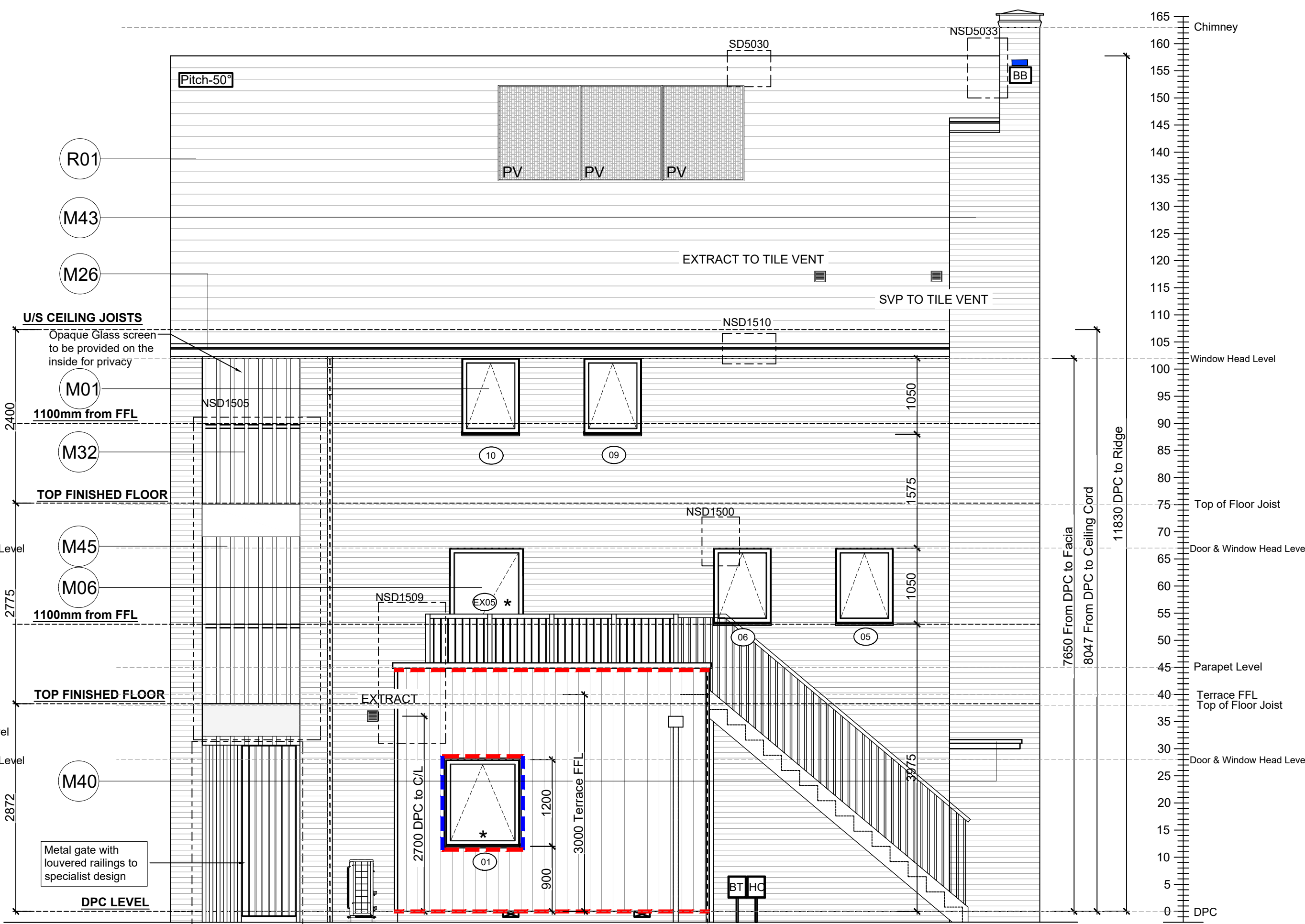
Window Legend:	
#	Egress Window
*	Secure By design
OB	Obscure Glazing
SGP	Solid Glazed Panel
EVC	Electric Vehicle Charger
MJ	Movement Joint
BB	Bat box
SB	Swift box



REAR ELEVATION

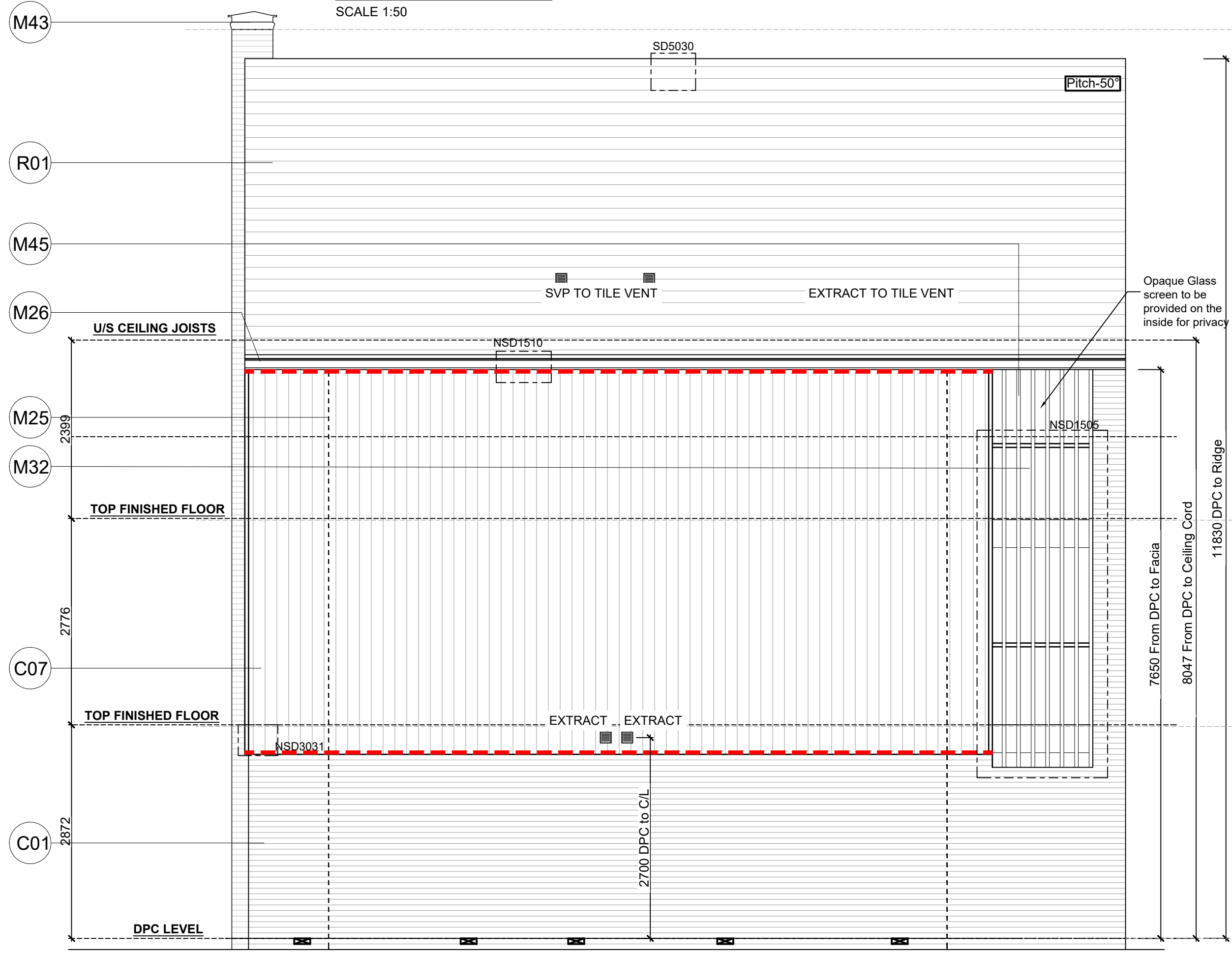
SCALE 1:50

Weatherboard / Tile Hung - Cavity Fire Barrier Legend:	
- - -	Dashed line denotes Tenmat VFB Plus intumescent cavity fire barrier.
- - -	Dashed line denotes Tenmat NVFB LD cavity fire barrier.



SIDE ELEVATION

SCALE 1:50



SIDE ELEVATION

SCALE 1:50

Extract locations to be confirmed by Vectaire

Refer to Ecology Consultants drawings for the product details of the bat and swift box

Refer to SE Drawings SA00394-4991-S-SW-DET for Bat joint re-inforcement

Notes
All dimensions to be checked on site prior to the commencement of construction and any discrepancy should be reported to the Site Manager.

This drawing may not be reproduced in any part or form without written consent.

All copyrights reserved.

Sub-Contractors MUST ensure that they have the latest issue drawing before they commence work on site.

This drawing is to be read in conjunction with all relevant Specifications, schedules and Engineers details.

Elec meter RWP/MJ positions to be finalised on Architects drawings on an individual site by site basis

Material Key

Key	Material
C01	Refer to EMS for plots specific brick colour
C07	Smooth Fibre cement timber effect vertical boarding - Hardie Plank "Midnight Black" or similar
M01	Window frame - RAL 7015
M03	Glazed balcony door - RAL 7015
M06	Framed glazed door - RAL 7015
M12	Timber-effect door with vertical panelling and glazed fanlight - RAL 7015
M25	Rainwater goods - dark grey
M27	Fascia board - RAL 7015
M27	Rolling gate formed with 50mm x 10mm metal flats - paint finish RAL 7015
M28	Metal balustrade and handrail formed with 50mm x 10mm metal flats - RAL 7015
M29	Vertical louvre panel formed with 50mm x 10mm metal flats - RAL 7015
M32	Glazed balustrade - handrail finish RAL 7015
M34	Powder coated aluminium balcony fascia panel - RAL 7015
M36	Powder coated aluminium coping with fall to inside - RAL 7015
M37	Minimum 20mm thick board forming lining to window recess - painted RAL 9005 or similar to match vertical boarding M
M40	Slim profile powder coated aluminium entrance canopy - RAL 7015
M44	Timber pergola structure providing visual screening - painted RAL 9005 or similar to match vertical boarding
M45	Brise soleil fins - colour matched to boarding
M46	Galvanised steel external staircase - RAL 7015
M48	Powder coated aluminium entrance canopy - RAL 7015
M60	Timber-effect door with vertical panelling - RAL 7015
R01	Slate effect plain tile - grey

Rev	Date	Description	Init.
R	12.06.25	Additional lights added, cill amended	ZJ
Q	25.03.25	Utility & WC ventilation extract routes amended.	DF
P	24.01.25	PV's added.	SK
O	25.11.24	Terrace stair amended	ZJ
N	06.11.24	Window head level revised	ZJ
M	31.10.24	Window head level revised	ZJ
L	14.10.24	Chimney detail refs added.	SK
K	09.10.24	Weatherboarding / Tile hung cavity fire barriers added in accordance with email dated 03.09.24	DF
J	25.09.24	Gym door amended	ZJ
I	16.09.24	ASHP added. Dim rod revised. Additional dims added	SK
		Ecology feature key and elevs co-ordinated.	
		Material legend amended.Front door design revised.	
		Door ht changed to 2100, chimney width amended	
		Terrace to SE design	



Job title
Brooklands College
Weybridge

Drawing title
House Type HT8
4B7P
Plots: 156,160,161,
Elevations

Scale
1:50 @ A1

Date
Aug 2023

Rev.
R

Drawn
SK

Dwg No.
SA00394-0594-A-HT8-ELE