

GENERAL ARRANGEMENT PLANS - WALL LEGEND

	Frost resistant quality facing brickwork 20N Brickwork
	Concrete Blocks (compressive strength 3.0N/mm² in 1:1.6 mortar (unless noted otherwise) forming 100/140mm wide partitions. Density = 1350-1600Kg/m³.
	Concrete Blocks (compressive strength 7.3N/mm² in 1:1.6 mortar (unless noted otherwise) forming 100/140mm wide partitions. Density = 1350-1600Kg/m³.
	Concrete Blocks (compressive strength 10.4N/mm² in 1:1.6 mortar (unless noted otherwise) forming 100/140mm wide partitions. Density = 1350-1600Kg/m³.
	Concrete Blocks (compressive strength 17.5N/mm² in 1:1.6 mortar (unless noted otherwise) forming 100/140mm wide partitions. Density = 1850-2300Kg/m³.
	70mm British Gypsum Gyproframe 70S50 'C' stud system, with studs at 600mm centres. 12.5mm Gyproc Soundbloc plasterboard each side with tapered edges, finished as per internal spec. 15mm Moisture-resistant plasterboard to bathroom with studs at 400mm centres.
	Concrete Blocks laid flat (compressive strength 10.4N/mm² in 1:1.6 mortar (unless noted otherwise) forming 215mm wide lift shaft walls. Density = 1350-1600Kg/m³.
	Concrete Blocks laid flat (compressive strength 17.5N/mm² in 1:1.6 mortar (unless noted otherwise) forming 215mm wide lift shaft walls. Density = 1850-2300Kg/m³.
	Knauf Supafix® 34 a glass mineral blowing wool, designed for use in external full-fill masonry cavity walls.
	Full Fill Isover RD Party Wall Roll, or similar approved, within cavity (no gaps to remain), strictly in accordance with Robust Detail E-WM-17.

	ARC PWCS cavity stop sock, providing a cavity barrier within the external wall cavity, in line with a separating wall or floor as specified in Approved Document B, and for closing the cavity at eaves level
	Movement Joints
	Wind Posts (setting out to centre of wind post)
	Structural Steel Beams, in accordance with Structural Engineers design & specifications.
	Girder Truss, in accordance with Roof Manufacturers design & specifications.
	Padstones, in accordance with Structural Engineers design & specifications.
	200x100x10mm thick galvanized steel spreader, in accordance with Structural Engineers design & specifications.

<b>IMPORTANT NOTE:</b> ALL EXTERNAL WALLS TO INCORPORATE BRICKWORK SBF30W60 BED-JOINT REINFORCEMENT TO INNER LEAF OF BLOCKWORK 2x COURSES ABOVE & BELOW ALL OPENINGS & TO PROJECT A MIN. 600mm BEYOND OPENING.
<b>INTERMITTENT EXTRACT VENTILATION:</b> Kitchen = 30L/S Adjacent hob; Utility = 30L/S; Bathroom = 15L/S; En-Suites = 15L/S; CIK's = 6L/S
<b>PURGE VENTILATION:</b> Padstones, to open more than 30 deg's. each habitable room to be provided with an openable window(s) with an opening area equal to 1/20th of the rooms floor area.

PADSTONE SCHEDULE				
REF	LENGTH	DEPTH	WIDTH	TYPE
P1	215	215	100	Concrete
P2	330	215	100	Concrete
P3	330x330 L Shaped	215	100	Concrete
P4	440	215	100	Concrete
P5	440	215	215	Concrete
P6	215	215	140	Concrete

Notes

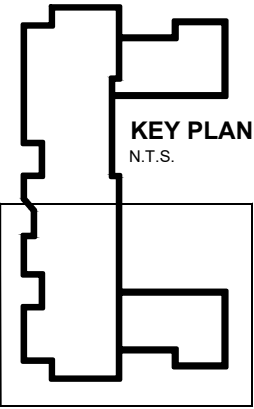
All dimensions to be checked on site prior to the commencement of construction and any discrepancy should be reported to the Site Manager.

This drawing may not be reproduced in any part or form without written consent.

All copyrights reserved.

Sub-Contractors MUST ensure that they have the latest issue drawing before they commence work on site.

This drawing is to be read in conjunction with all relevant Specifications, schedules and Engineers details.



Refer to relevant flat layouts drawing for M&E layouts

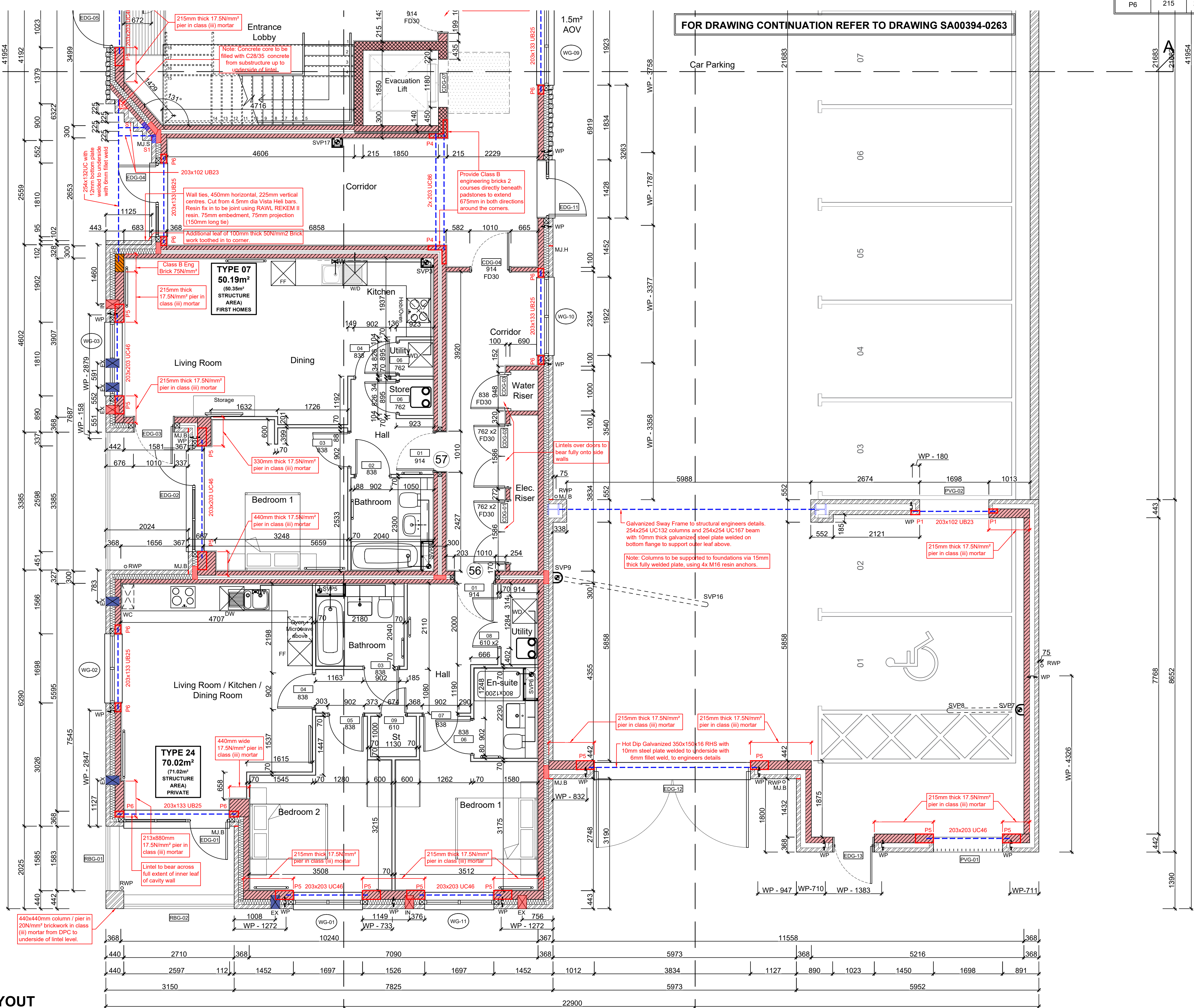
Refer to 'Alpha' MEP drawings for communal electrics

NOTE: Dry Riser's to be designed, installed and tested by specialist.

Landing and stair units to be supported on solid landing planks

Corner piers of balconies to be solid brick construction

Balconies to be precast solid concrete to manufacturers design. Balconies to be two-way spanning, supported on external leaf of cavity wall and balcony masonry piers.



GROUND FLOOR LAYOUT

SCALE 1:50



Job title	
Brooklands College Weybridge	
Drawing title	
Block D Plots: 56 - 74 Ground Floor Plan	
Scale 1:50 @ A1	Date June 2023
Rev. N	Drawn JM
Dwg No. SA00394-0262-A-FTD-GA	