

Cavity Fire Barriers:

Vertically installed flexible fire sock to provide 60 minute compartmentation, compressed into cavity at:

- Flexible fire Stopping to be installed around all services penetrations through external walls, providing minimum 30 minute protection.

Cavity closer around external openings to provide minimum 30 minute protection.

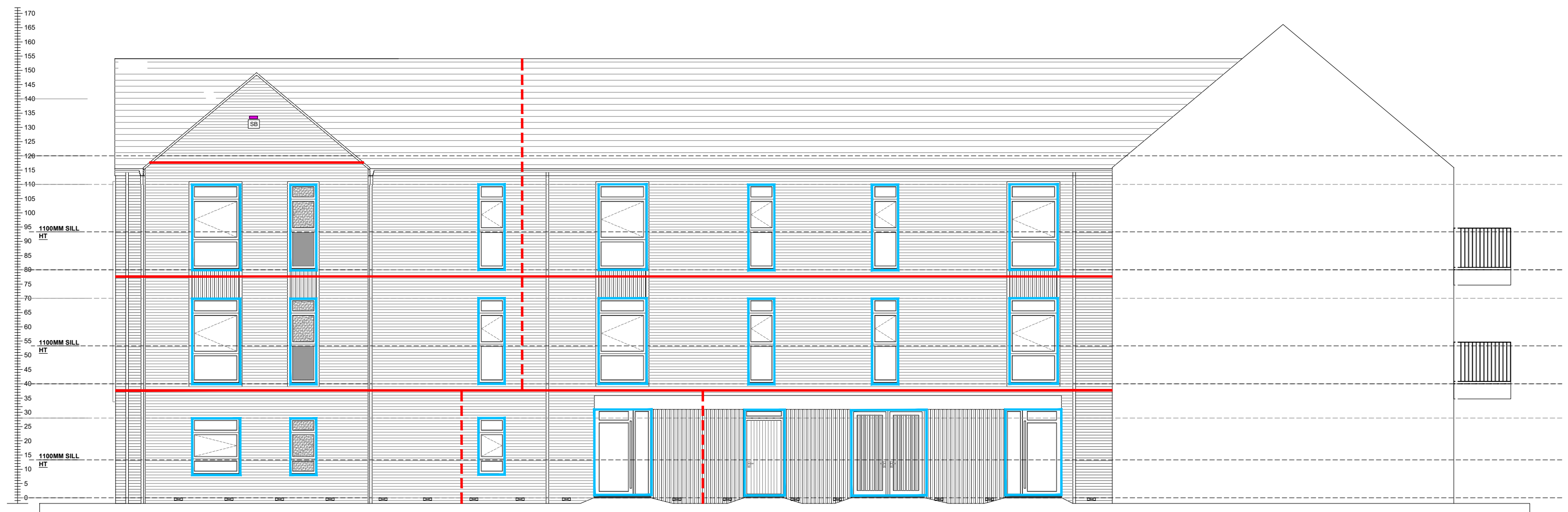
- Installation to suit Cavity Widths and to be in accordance with Manufacturer's Guidance Specification & Details.
- Size and Specification of Cavity Fire Barriers to suit Cavity Width - MUST fully close the Cavity, leaving no gaps.
- Intumescent Strip Cavity Barriers - Size and Specification to suit Cavity Width - MUST be capable of fully closing the Cavity, leaving no gaps.
- Cavity Fire Barriers to Extend to Substructure Level to Top of Footing for complete Compartmentalisation.



SP: Spandrel Panel

OB: Obscure Glazing

OB: Obscure Glazing



SP: Spandrel Panel

OB: Obscure Glazing

OB: Obscure Glazing

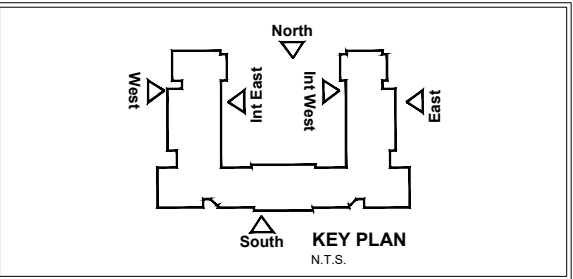
All dimensions to be checked on site prior to the commencement of construction and any discrepancy should be reported to the Site Manager.

This drawing may not be reproduced in any part or form without written consent.

All copyrights reserved.

Sub-Contractors MUST ensure that they have the latest issue drawing before they commence work on site.

This drawing is to be read in conjunction with all relevant Specifications, schedules and Engineers details.



A	15.03.24	Construction Issue	MB
Rev	Date	Description	Init.



Brooklands College
Weybridge

Scale 1:100 @ A1	Date March 24
Rev. A	Drawn MB

SA00394-2043-A-FTE-FS