

Notes

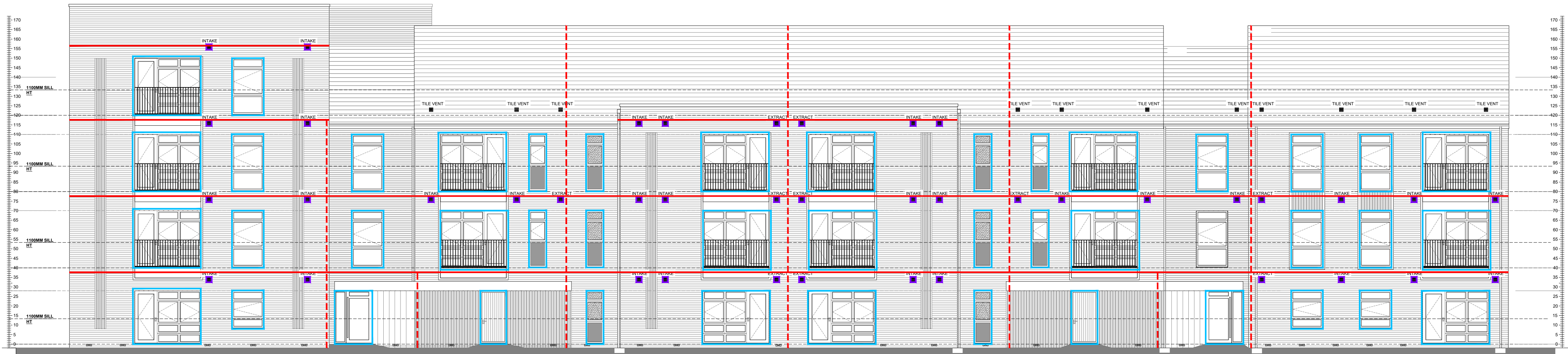
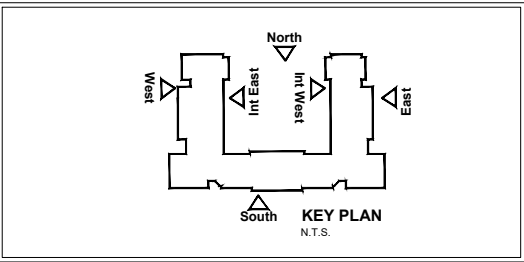
All dimensions to be checked on site prior to the commencement of construction and any discrepancy should be reported to the Site Manager.

This drawing may not be reproduced in any part or form without written consent.

All copyrights reserved.

Sub-Contractors MUST ensure that they have the latest issue drawing before they commence work on site.

This drawing is to be read in conjunction with all relevant Specifications, schedules and Engineers details.



### South Elevation

SCALE 1:100  
SP: Spandrel Panel  
OB: Obscure Glazing



### West Elevation

SCALE 1:100  
SP: Spandrel Panel  
OB: Obscure Glazing

Cavity Fire Barriers & Fire Stopping Legend:

**Cavity Fire Barriers:**

- Horizontally installed flexible fire sock to provide 60 minute compartmentation, compressed into cavity at:
  - Upper floor junction with external & party walls.
  - Ceiling level of roof at junction with external & party walls.
- Vertically installed flexible fire sock to provide 60 minute compartmentation, compressed into cavity at:
  - Top of external walls at roof eaves & verge.
  - End of party walls with junction to external walls.
  - Over top of party wall spandrel at junction with roof covering.
  - Vertically at junctions of external wall and integral garage/carport wall.
  - Vertically at maximum 10m (usually convenient to work from external corners)
- Flexible fire Stopping to be installed around all services penetrations through external walls, providing minimum 30 minute protection.
- Cavity closer around external openings to provide minimum 30 minute protection.

**NOTE:**

- Installation to suit Cavity Widths and to be in accordance with Manufacturer's Guidance Specification & Details.
- Size and Specification of Cavity Fire Barriers to suit Cavity Width - MUST fully close the Cavity, leaving no gaps.
- Intumescent Strip Cavity Barriers - Size and Specification to suit Cavity Width - MUST be capable of fully closing the Cavity, leaving no gaps.
- Cavity Fire Barriers to Extend to Substructure Level to Top of Footing for complete Compartmentalisation.

Rev	Date	Description	Init.
A	15.03.24	Construction Issue	MB



Job title

Brooklands College  
Weybridge

Drawing title

Block E  
Plots: 86-121  
Fire Stopping Elevations

Scale	1:100 @ A1	Date	March 24
Rev.	A	Drawn	MB
Dwg No.	SA00394-2041-A-FTE-FS		