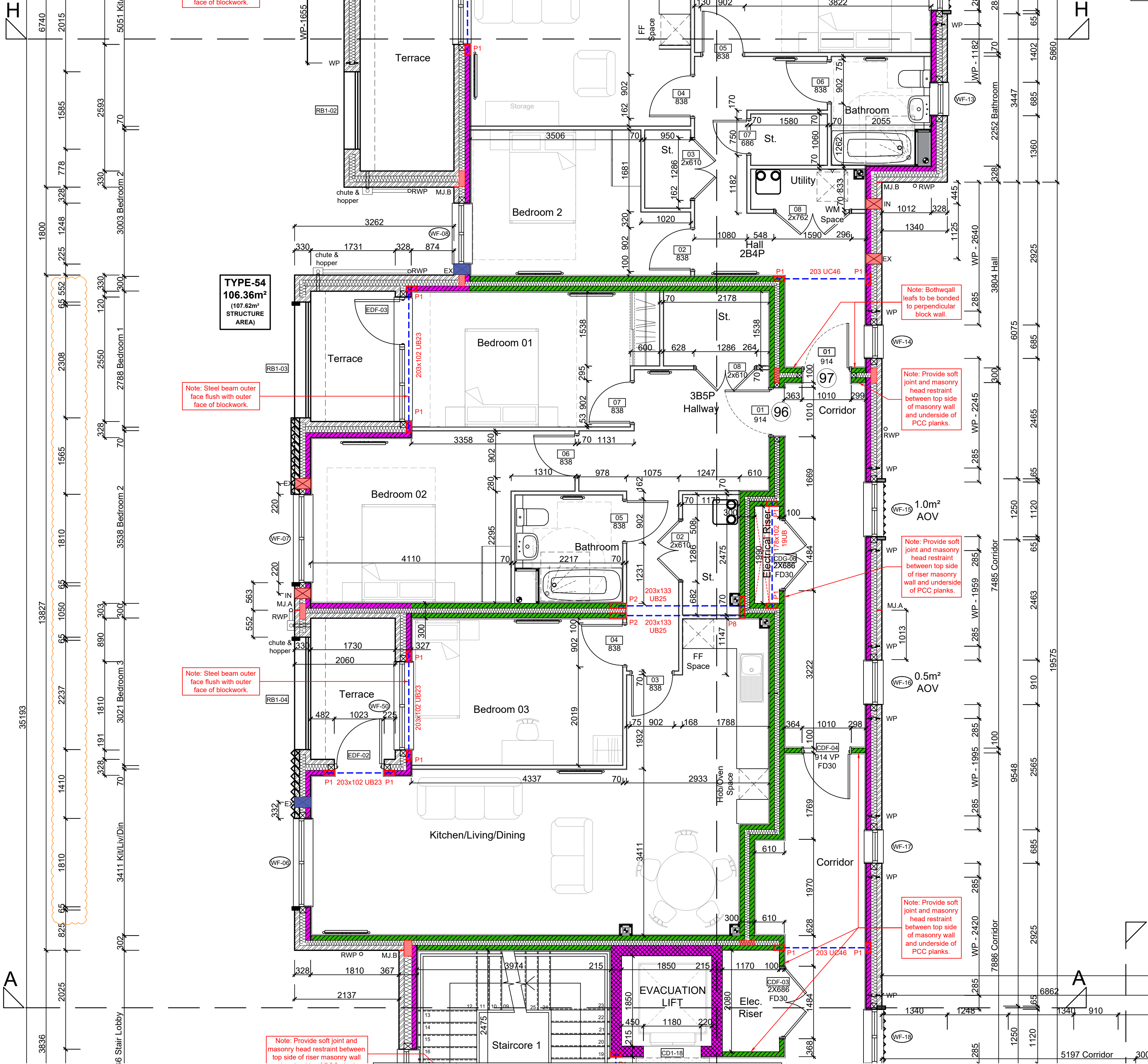


H

A



FOR DRAWING CONTINUATION REFER TO DRAWING SA00394-0294

PADSTONE SCHEDULE				
REF	LENGTH	DEPTH	WIDTH	TYPE
P1	215	215	100	Concrete
P2	330	215	100	Concrete
P3	440	215	215	Concrete
P4	330	215	215	Concrete
P5	200	10	100	Steel
P6	660	215	100	Concrete
P7	330x330	215	100	Concrete
P8	440	215	100	Concrete
P9	440x440	215	100	Concrete
P10	440	215	140	Concrete
P11	215	215	140	Concrete
P12	330	215	140	Concrete

GENERAL ARRANGEMENT PLANS - WALL LEGEND

- Frost resistant quality facing brickwork 20N Brickwork
- Concrete Blocks (compressive strength 7.3N/mm² in 1:1.6 mortar (unless noted otherwise) forming 100/140mm wide partitions. Density = 1350-1600Kg/m³
- Concrete Blocks (compressive strength 10.4N/mm² in 1:1.6 mortar (unless noted otherwise) forming 100/140mm wide partitions. Density = 1350-1600Kg/m³
- Concrete Blocks (compressive strength 17.5N/mm² in 1:1.6 mortar (unless noted otherwise) forming 100/140mm wide partitions. Density = 1850-2300Kg/m³
- 70mm British Gypsum Gyprock 70S50 'C' stud system, with studs at 600mm centres. 12.5mm Gyprock Soundbloc plasterboard each side with tapered edges, finished as per internal spec. 15mm Moisture-resistant plasterboard to bathroom with studs at 400mm centres.
- Concrete Blocks laid flat (compressive strength 10.4N/mm² in 1:1.6 mortar (unless noted otherwise) forming 215mm wide lift shaft walls. Density = 1350-1600Kg/m³
- Concrete Blocks laid flat (compressive strength 17.5N/mm² in 1:1.6 mortar (unless noted otherwise) forming 215mm wide lift shaft walls. Density = 1850-2300Kg/m³
- Knauf Supafix® 34 a glass mineral blowing wool, designed for use in external full-fill masonry cavity walls.
- Full Fill Isover RD Party Wall Roll, or similar approved, within cavity (no gaps to remain), strictly in accordance with Robust Details.
- ARC PWCSS cavity stop sock, providing a cavity barrier within the external wall cavity, in line with a separating wall or floor as specified in Approved Document B, and for closing the cavity at eaves level
- MJ Movement Joints
- WP Wind Posts (setting out to centre of wind post)
- Vectaire MEV ventilation extracts
- Alpha ASHP intake & extracts
- Structural Steel Beams, in accordance with Structural Engineers design & specifications.
- Girder Truss, in accordance with Roof Manufacturers design & specifications.
- P Padstones, in accordance with Structural Engineers design & specifications.

IMPORTANT NOTE:
ALL EXTERNAL WALLS TO INCORPORATE BRICKFORCE SBF30W60 BED-JOINT REINFORCEMENT TO INNER LEAF OF BLOCKWORK 2x COURSES ABOVE & BELOW ALL OPENINGS & TO PROJECT A MIN. 600mm BEYOND OPENING.

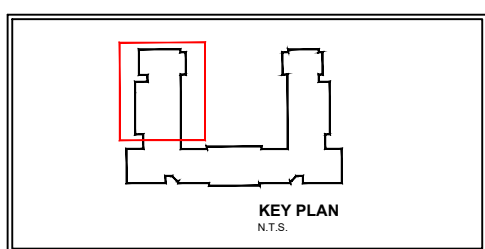
INTERMITTENT EXTRACT VENTILATION:
Kitchen = 30L/S Adjacent hob; Utility = 30L/S; Bathroom = 15L/S;
En-Suites = 15L/S; Clk's = 6L/S

PURGE VENTILATION:
All windows to habitable rooms to open more than 30 deg's. each habitable room to be provided with an operable window(s) with an opening area equal to 1/20th of the rooms floor area.

- Landing and stair units to be supported on solid landing planks
- Refer to relevant flat layouts drawing for M&E layouts
- Refer to 'Alpha' MEP drawings for communal electrics
- NOTE: Dry Riser's to be designed, installed and tested by specialist.**

Terraces to be precast solid concrete to manufacturers design. Terraces to be two-way spanning, supported on external leaf of cavity walls.

- Notes
- All dimensions to be checked on site prior to the commencement of construction and any discrepancy should be reported to the Site Manager.
- This drawing may not be reproduced in any part or form without written consent.
- All copyrights reserved.
- Sub-Contractors MUST ensure that they have the latest issue drawing before they commence work on site.
- This drawing is to be read in conjunction with all relevant Specifications, schedules and Engineers details.



Rev	Date	Description	Init.
R	10.10.25	Padstones, structural notes highlighted in red.	DF
		Updated steel lintels, added elec riser hole for services, updated apartment ent. door frame, added dry riser pipe setting out & note, updated ext. wall fire socks.	
		External wall blockwork amended to 100mm	
		Updated structural steels & padstones according to structural drawings dated 23.09.25. Fire socks reviewed, Lift walls blockwork altered, Dims checked, ventilation co-ordination (18.07.25).	
		Additional terrace drainage gullies (18.07.25).	
		Stone surrounds added to openings	
Q	18.06.25	Added enclosed terrace/balcony RWP.	DF
P	07.04.25	Risers coordinated, dry riser relocated	ZJ
O	04.04.25	Internal dims added. Electrical Info segregated.	DF
		Extracts coordinated as per consultants drawings	
		Added communal electric note, insulation types added to legend, windpost setting out.	
N	03.02.25	M&E specification reviewed & coordinated.	DF
M	22.01.25	Amended external 1010 doors to be 1023.	
		Party wall & internal load bearing wall blockwork block strengths corrected.	DF



Job title

Brooklands College
Weybridge

Drawing title

Block E
Plots: 86-121
First Floor Plan
Sheet 1

Scale	1:50 @ A1	Date	June 2023
Rev.	R	Drawn	SK

Dwg No.
SA00394-0293-A-FTE-GA

FIRST FLOOR LAYOUT
SCALE 1:50