




KEY

SPAN MARKERS

-  Span of Flat Roof to timber roof manufacturers design.
-  Span of second/third/fourth floor 200mm deep hollowcore planks to floor manufacturers design.
-  Steel beam required


BIRTLEY LINTELS (100mm INNER LEAF)

- SB100

BIRTLEY LINTELS (100mm OUTER LEAF)


- LAHDX

PADSTONES

 P1 - 215x140x215mm deep concrete padstone.

MOVEMENT JOINTS

Symbol on Plan

 Movement joint required. Type as specified on drawing. For details refer to Eastwood CE drawing 48176-ECE-A-XX-DR-S-0101

NOTES

General Notes

- Information within this markup drawing is not necessarily produced to scale. Always use figured dimensions and co-ordinates. If in doubt, ask.
- For referenced drawing/s refer to architects title block in bottom left of sheet.
- Consult the key in the top left of the sheet for descriptions of all symbols used.
- Markup to be read in conjunction with the specification at the beginning of the structural calculation package.
- Information within this markup is relevant for sites with a maximum basic wind speed of 22.0m/s, a maximum altitude of 50m and closest distance to sea is assumed to be 2km. Engineer must be consulted for sites which fall outside these criteria.

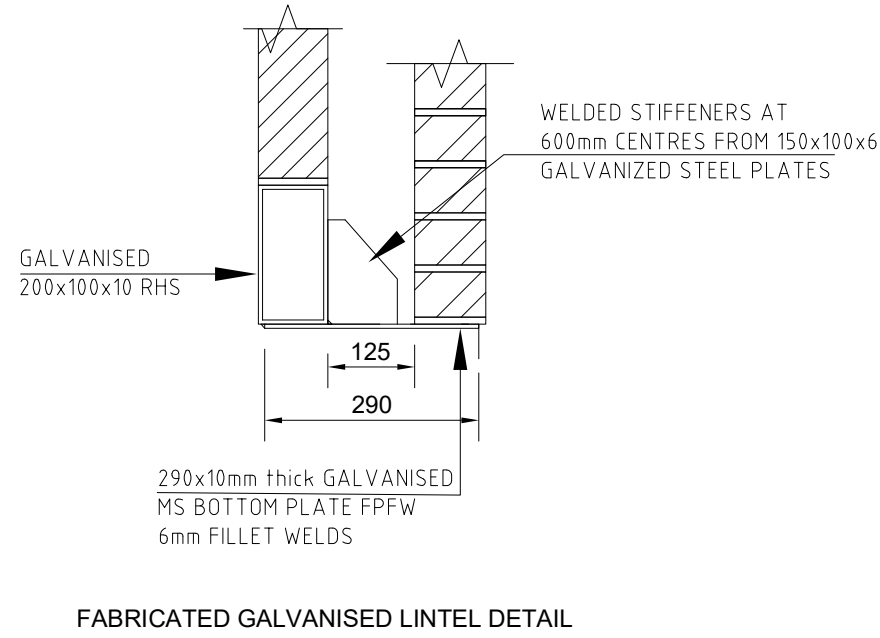
Masonry

- Inner leaf of external (perimeter walls) to be 100mm wide 7.3N/mm² block, internal masonry to be 100mm wide 7.3 N/mm² block in minimum class (iii) (M4) mortar unless noted otherwise. Blockwork to have a density of no less than 950kg/m³ and no more than 1400kg/m³.
- Outer leaf masonry clay brick work or block work to be laid in minimum class (iii) (M4) mortar to Architect's specifications.

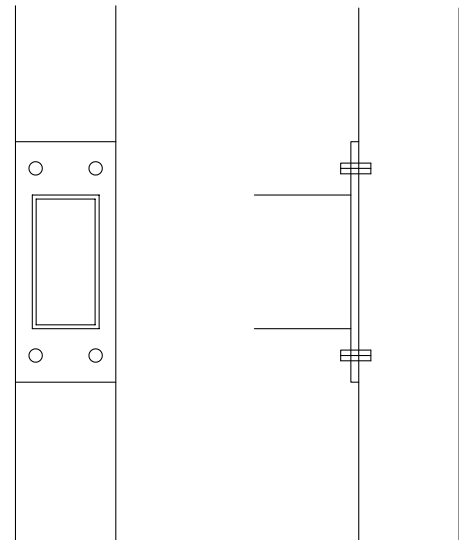
Movement Joints and Bed Joint Reinforcement

- Movement joints are for the arrangements shown only.
- For movement joint details please refer to Eastwood Consulting Engineers drawing 47803-ECE-ZZ-XX-DR-S-0101.

SKETCH 2

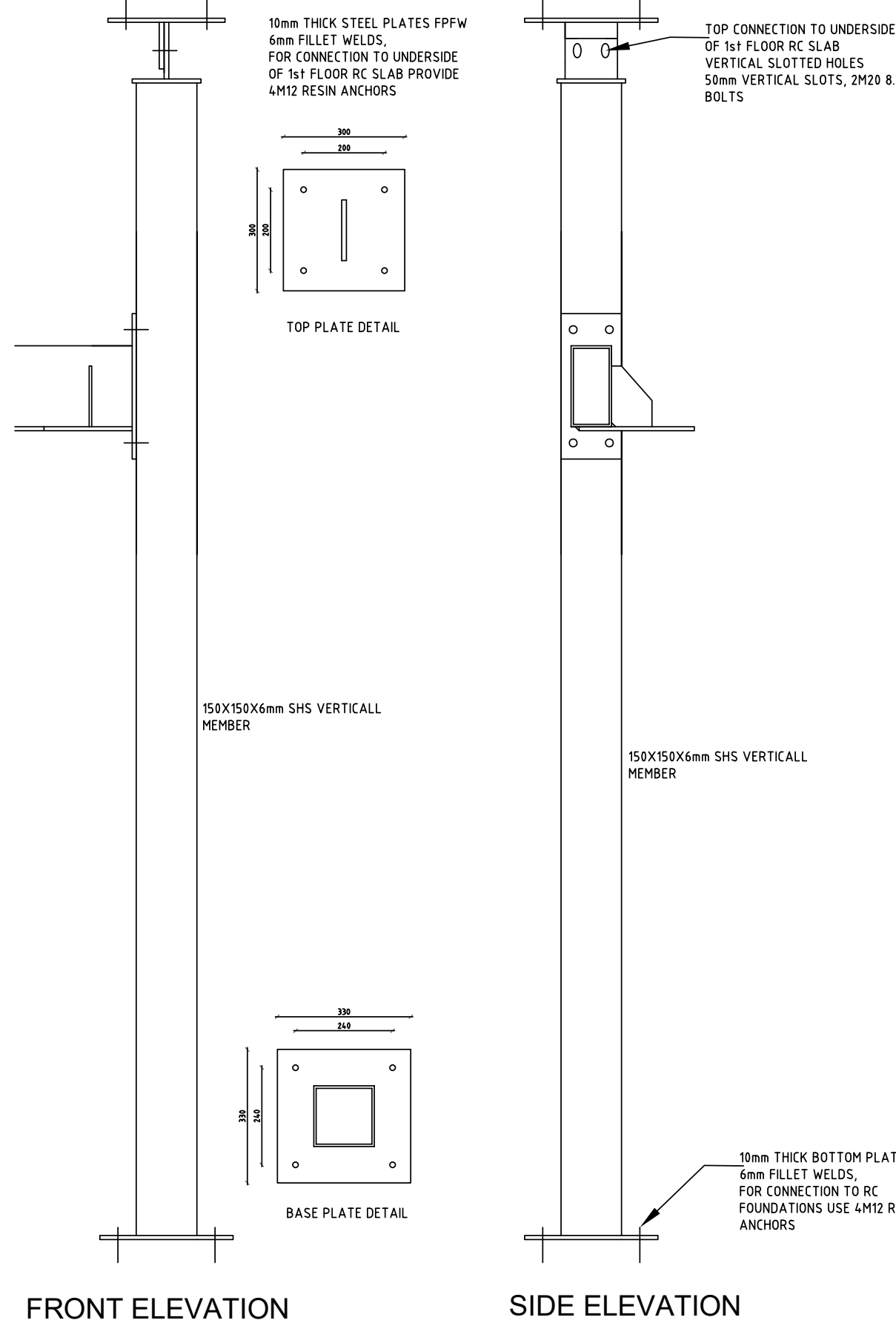


CONNECTION DETAIL SKETCH 3



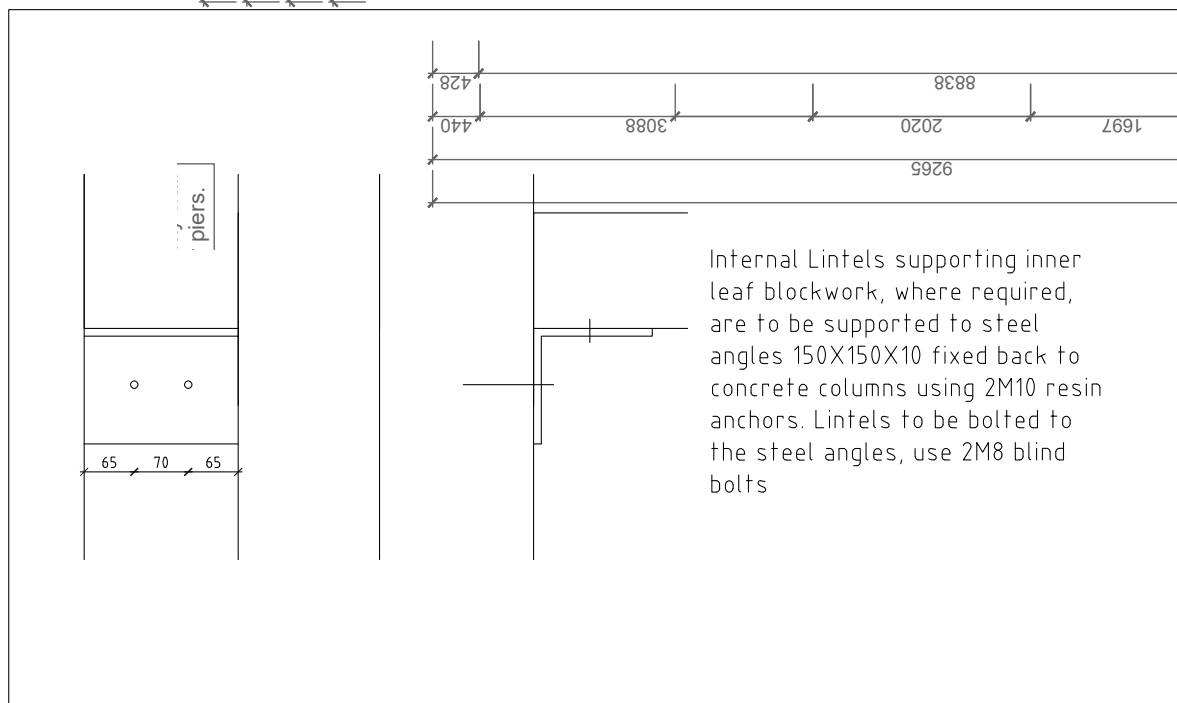
200x100x10 RHS with 10mm thick welded end plates, 4 M20 blind bolts, 6mm fillet welds

SKETCH 1



G. FLOOR LAYOUT
Scale 1:50 at A1

Internal Lintels supporting inner leaf blockwork, where required, are to be supported to steel angles 150X150X10 fixed back to concrete columns using 2M10 resin anchors. Lintels to be bolted to the steel angles, use 2M8 blind bolts



CALA HOMES

BROOKLANDS COLLEGE,
WEYBRIDGE

APT BLOCK B

STRUCTURAL APPRAISAL MARKUP

Eastwood
CONSULTING ENGINEERS

St Andrew's House
23 Kingfield Road
Sheffield, S11 9AS
T: 0114 255 4554
E: mail@eastwoodce.com
eastwoodce.com

BY

NC

CHECKED

DATE

Oct 2023

STRUCTURAL APPRAISAL MARKUP No.
SA00394-5120-S-BLOCK B-SS

SHEET No.
1 of 5

REV
C