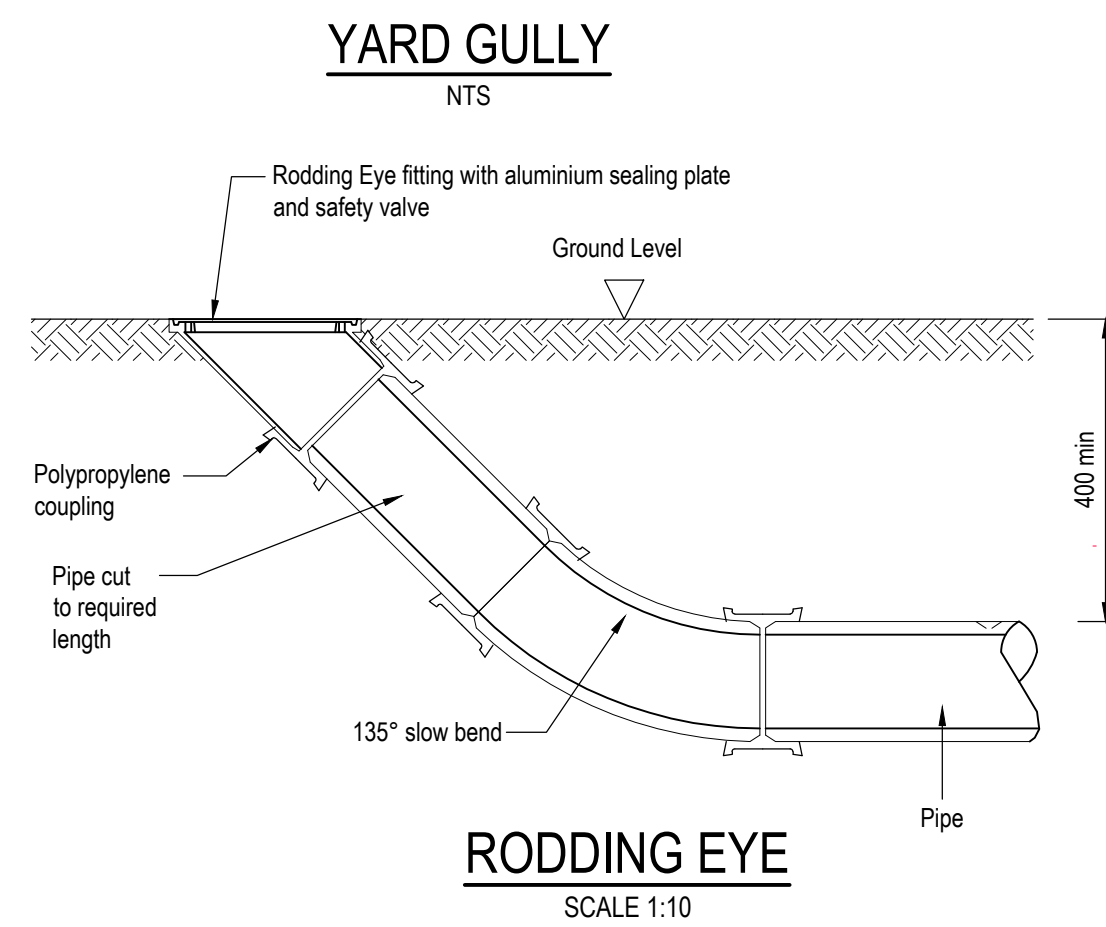
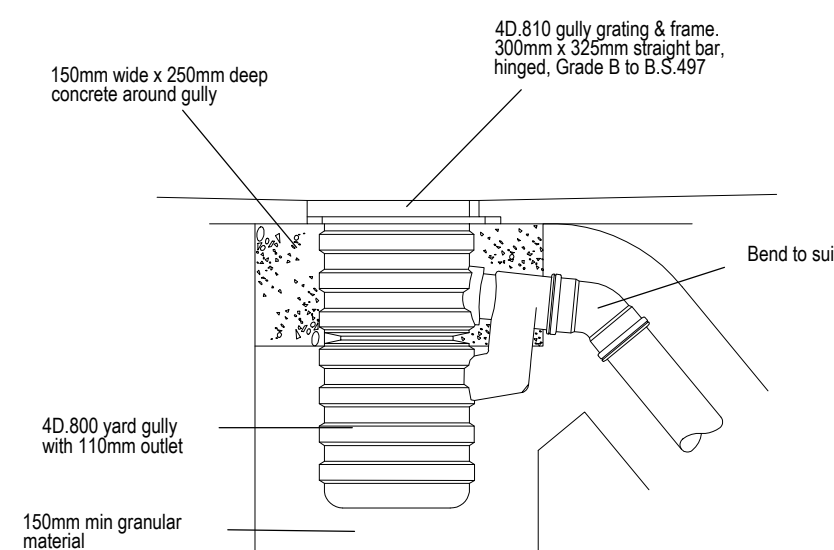
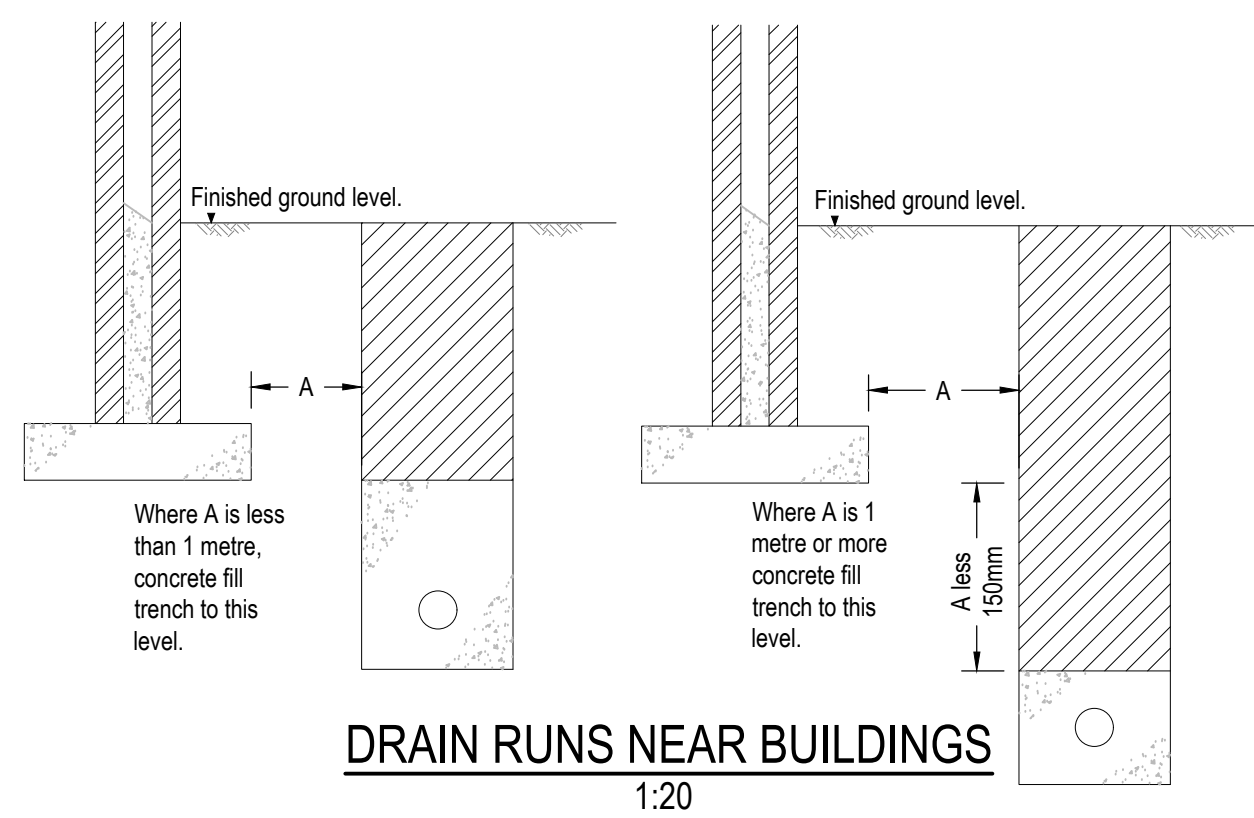
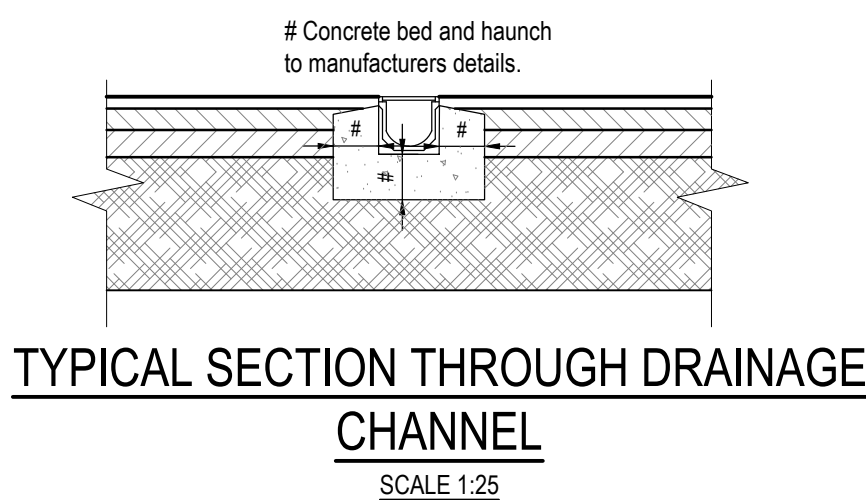
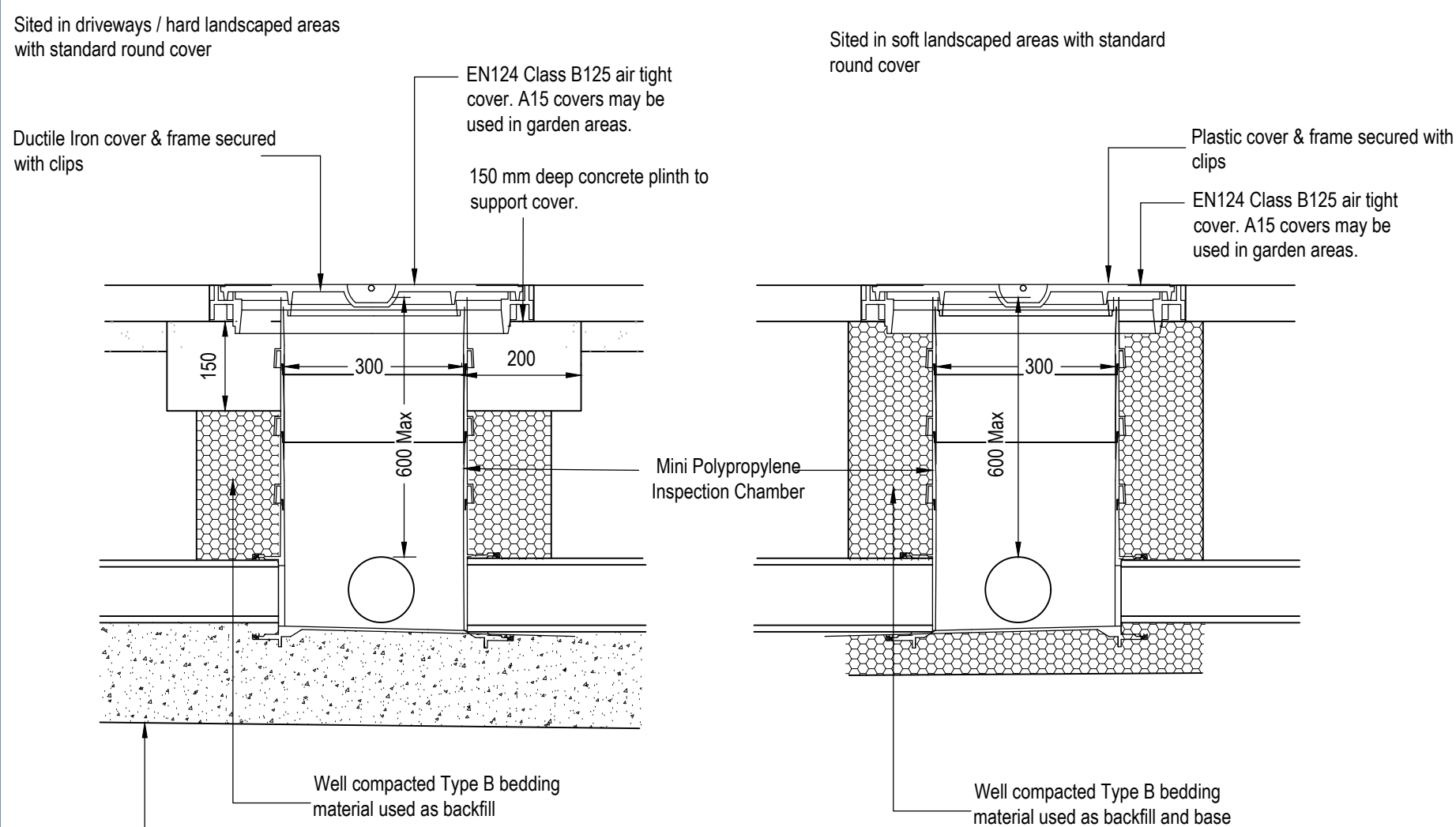


TYPICAL VERTICAL BACKDROP

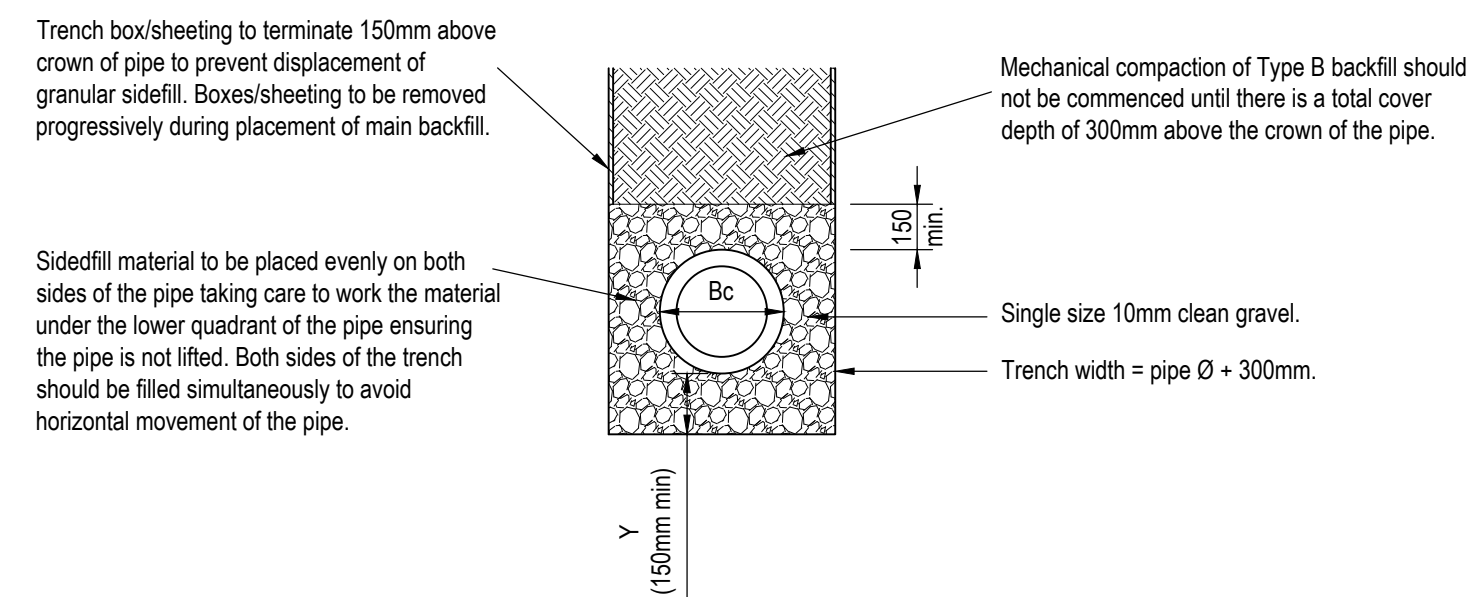
NOTE: Where the drop is not excessive a 45 degree drop pipe may be used
SCALE 1:10



REDUCED ACCESS TELESCOPIC PP INSPECTION CHAMBER >1.2M



MINI INSPECTION CHAMBER



CLASS S BED AND SURROUND PVC PIPES

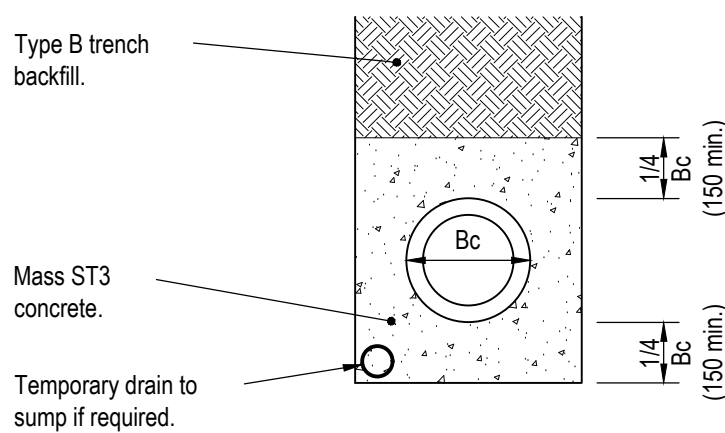
TYPICAL PIPE BED AND SURROUND DETAILS

PIPE BED AND SURROUND DIMENSIONS

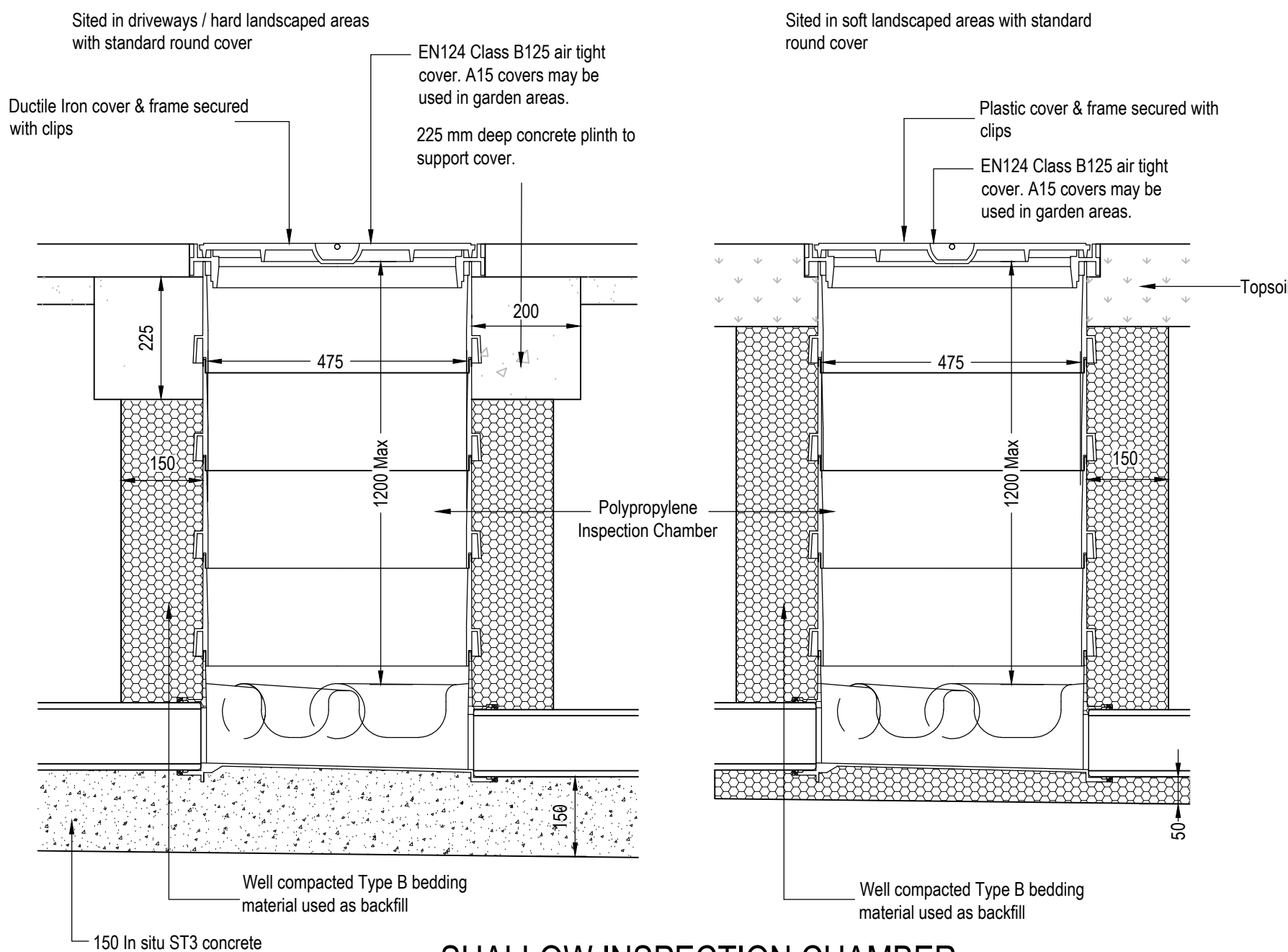
Bc = Outside Diameter of Pipe

IN UNIFORM SOILS
DIMENSION Y = 150 or 1/6Bc (whichever is the greater) under barrels and not less than 100 under sockets.

IN ROCK OR MATERIAL CONTAINING HARD SPOTS
DIMENSION Y = 200 or 1/4Bc (whichever is the greater) under barrels and not less than 200 under sockets.

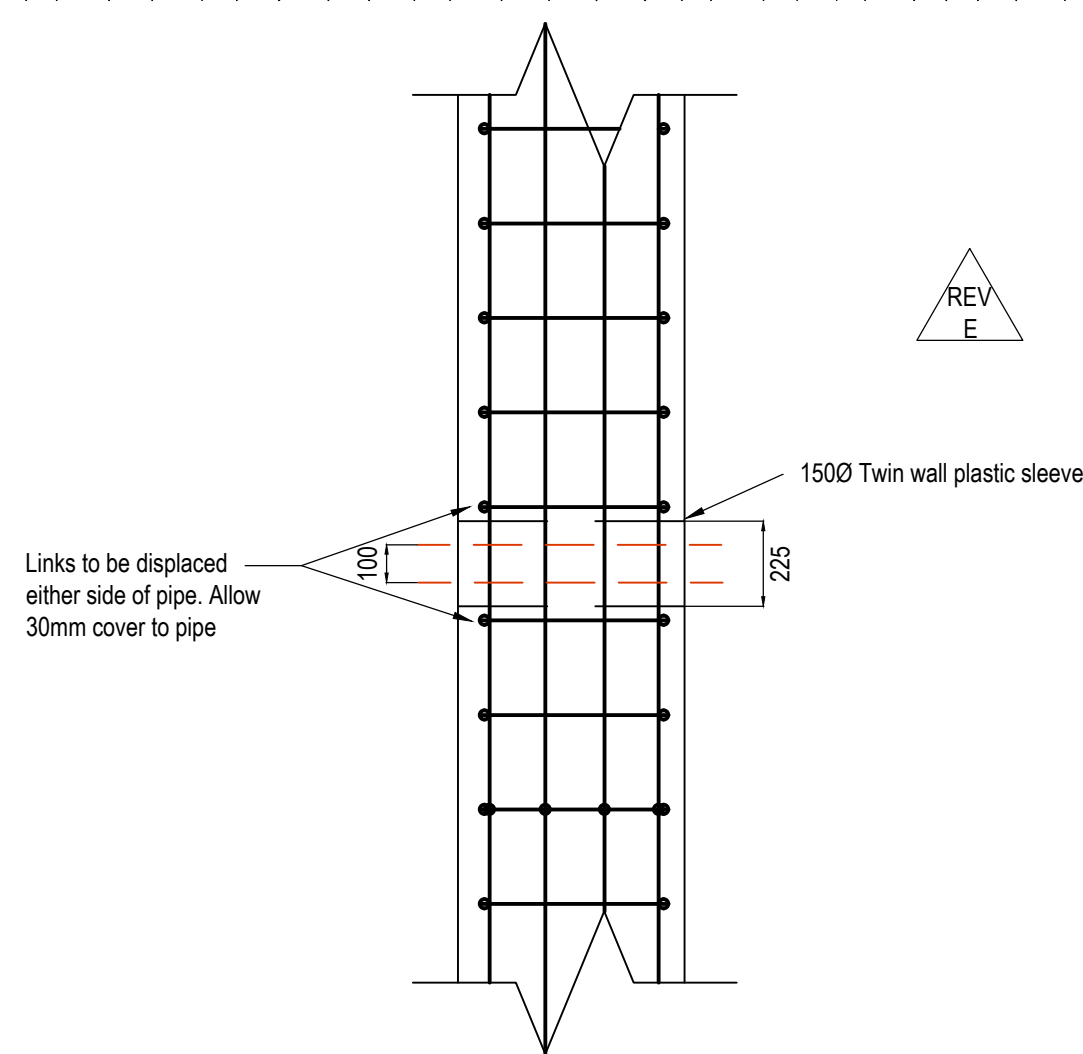


CLASS Z BED AND SURROUND

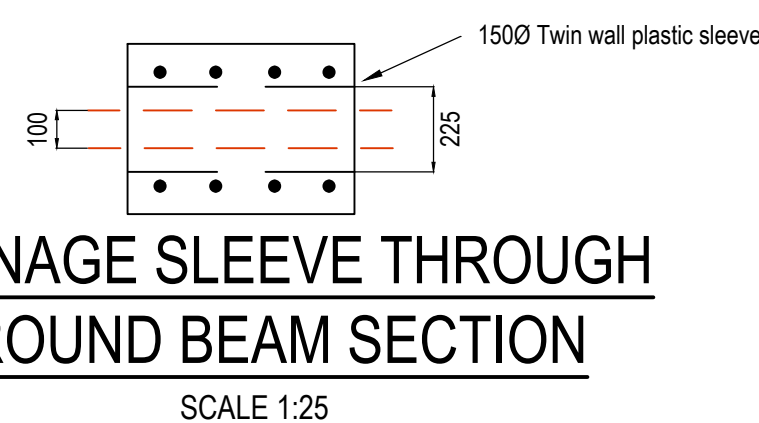


SHALLOW INSPECTION CHAMBER

DRAINAGE SLEEVE THROUGH GROUND BEAM PLAN



DRAINAGE SLEEVE THROUGH GROUND BEAM SECTION



- All dimensions in millimetres unless noted otherwise.
- All pipes to be either vitrified clay in accordance with BS EN 295, and having a crushing strength of 40kN/m, or class 120 concrete (54kN/m min) to BS 5911, bedded on a class B granular bed and haunch, or Polypipe uPVC or similar bedded on a class S granular bed and surround. Where pipes are in the public highway they are to be bedded on a class S granular bed and surround.
- If the cover to the pipe is less than 600mm a class Z concrete bed and surround must be used.
- All trenches in roads, paved areas and below slabs shall be backfilled with Type 1 or Type 2 DOT granular sub-base material.
- All pipes to be laid soffit to soffit at manholes unless noted otherwise.
- All in situ concrete to be designated mix FND2 conforming to BS 8500-2 unless agreed otherwise.
- All private drainage to be 100mm diameter unless otherwise stated.
Minimum gradients:
Foul Water 1/80 (min 1 wc)
Storm Water 1/100
- All surface water lateral pipes to be 150mm diameter minimum and all foul water lateral pipes to be 100mm diameter minimum to adoptable sewers.
- All rainwater pipes must be fitted with a roddable access above ground.
- All private drainage to be installed in accordance with Part H of the Building Regulations and BS EN 752 & 12056.
- Refer to manufacturers instructions for installation details
- All Channel drains to be ACO M100D (100mm deep unit) or similar approved unless contributing area exceeds 170m². Areas with a contributing area greater than this should be upsized to ACO M150D (210mm deep unit) or similar approved. Channels in parking areas to have Intercept Bar stainless steel gratings suitable for B125 load classification. Heelguard mesh stainless steel mesh should be used as an alternative in heavily trafficked areas (D400).

NOTE: Medium duty ACO channels to be used in all shared private driveway areas.

E	Drainage sleeve through ground beam detail added.	JAE	AMC	27.06.2025
D	Abeysance note deleted from title block.	PWAH	AMC	31.07.2024
C	Note re abeyance list amended.	PWAH	CAT	17.04.2024
B	Catchpit detail moved to Drg SA00394-3108.	PWAH	AMC	19.01.2023
A	First issue.	PWAH	CAT	17.10.2023
REV	DESCRIPTION	SIG	CHK	DATE

CALA HOMES (THAMES) LIMITED

BROOKLANDS COLLEGE
WEYBRIDGE

PLOT DRAINAGE
CONSTRUCTION DETAILS

CALA

Eastwood
CONSULTING ENGINEERS

St Andrew's House
23 Kingfield Road
Sheffield, S11 9AS

T: 0114 255 4554
E: mail@eastwoodce.com
eastwoodce.com

ECE PROJECT No SCALE AT A1 Drawing Status REV

48174 NTS CONSTRUCTION E

Project
SA00394-3209-C-SW-SP