

225mm long, flat section metal wall ties, with one end debonded @ maximum 300mm vertical centres. E.g. Ancon PPS, or other similar approved. The sliding end of the tie is to be prepared for use prior to building in.

Cavity wall ties to be maximum 300 mm vertical centres 275mm each side of movement joint. See note 4.

Wall tie @ maximum 300mm vertical centre. E.g. Ancon SPB, or similar approved.

Flat section debonded wall tie @ maximum 300mm vertical centre. E.g. Ancon PPB, or similar approved.

Movement Joint Type ①

Cavity wall ties at standard spacing to suit inner frame specification. See note 4.

Cavity wall ties to be maximum 300 mm vertical centres 225 mm each side of movement joint. See note 4.

Movement Joint Type ②

Wall tie @ maximum 300mm vertical centre. E.g. Ancon SPB, or similar approved.

200 cavity

Flat section debonded wall tie @ maximum 300mm vertical centre. E.g. Ancon PPB, or similar approved.

Cavity wall ties to be maximum 300mm vertical centres 225mm each side of movement joint.

225mm long, flat section metal wall ties, with one end debonded @ maximum 300mm vertical centres. E.g. Ancon PPS, or other similar approved. The sliding end of the tie is to be prepared for use prior to building in.

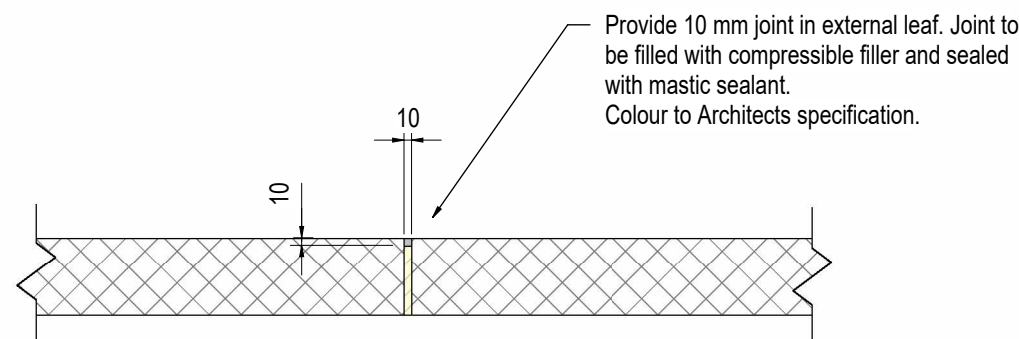
Movement Joint Type ③

Wall tie @ maximum 300mm vertical centre. E.g. Ancon SPB, or similar approved.

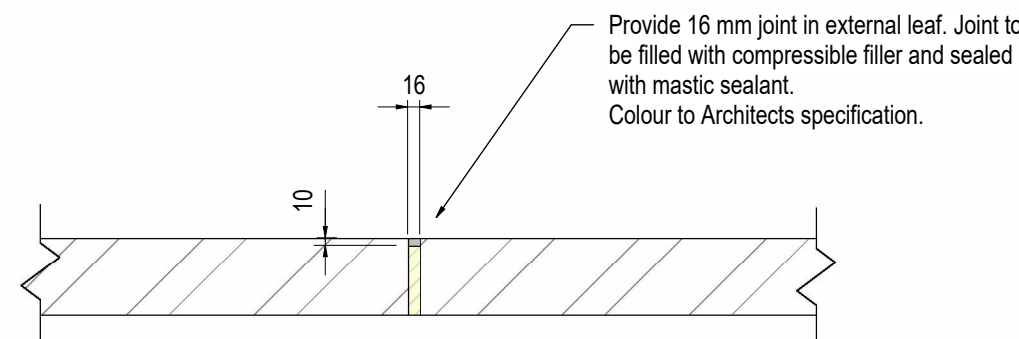
Flat section debonded wall tie @ maximum 300mm vertical centre. E.g. Ancon PPB, or similar approved.

Cavity wall ties to be maximum 300mm vertical centres 225mm each side of movement joint.

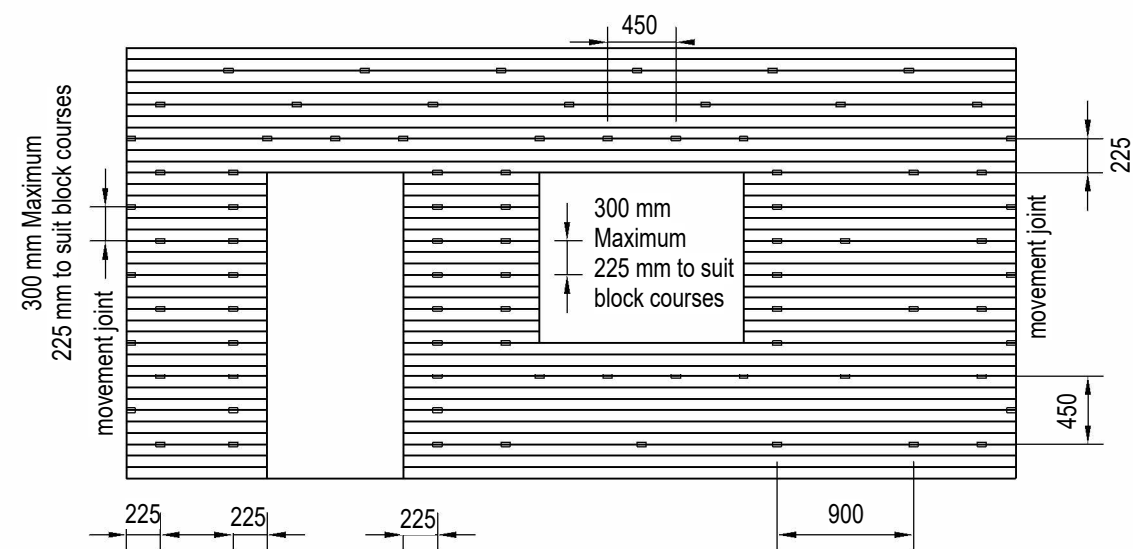
Movement Joint Type ④



Movement Joint Construction Detail in Blockwork Panels



Movement Joint Construction Detail in Clay Brick Panels

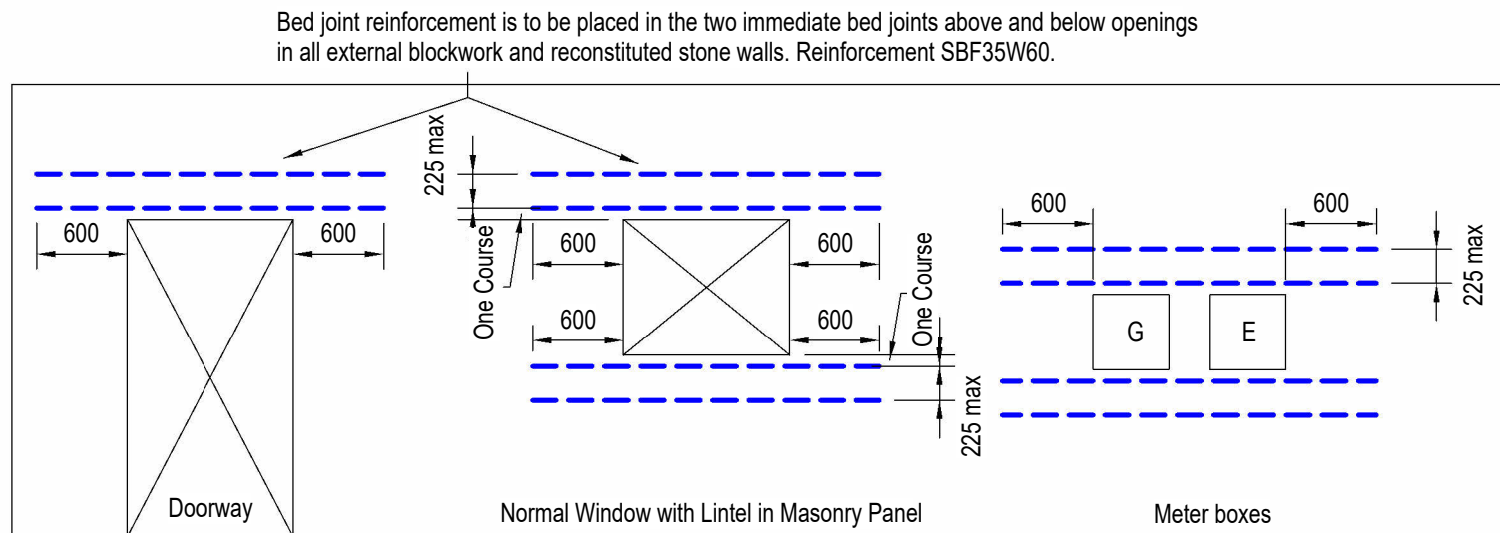


Spacing
Standard spacing of ties for cavity walls with blockwork inner leaf, is 900 mm x 450mm centres in a staggered pattern (2.5 ties per square metre).

Ties
Wall tie type in accordance with BS 5628-1:2005 Annex C or manufacturer's literature to suit topography and altitude. Length to suit cavity sizes of 125 mm to 200 mm and external leaf thickness of up to 102 mm.

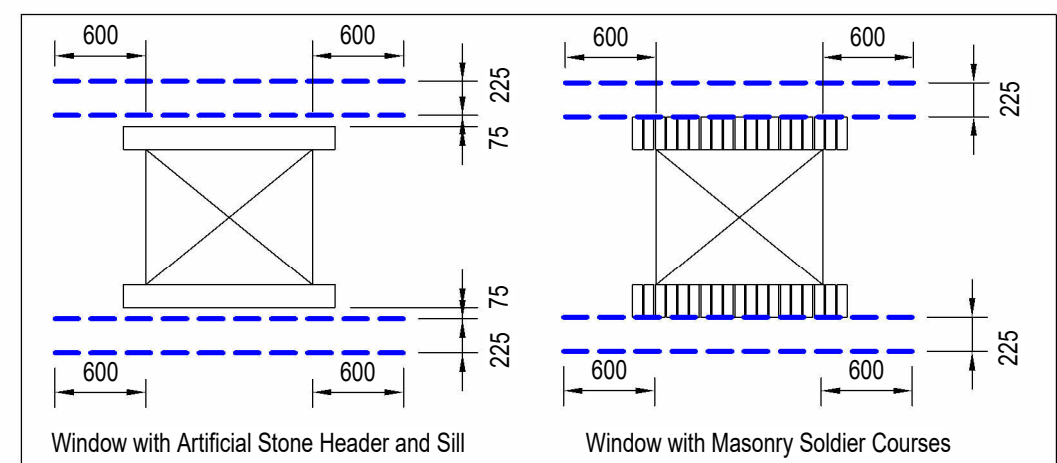
Typical layout of wall ties for cavities with blockwork inner leaf

SCALE 1 : 50



Typical detail for bed joint reinforcement around all openings in blockwork and reconstituted stone block walls. (This is specified as a minimum to all openings.)
Scale 1:50

Bed joint reinforcement is also required in panels to form reinforcement zones in particular plots. See individual house type elevations and plans annotated by Eastwood CE.



Typical detail for bed joint reinforcement around openings where required in brickwork walls. (This is specified as a minimum to all openings.)
Scale 1:50

REV	DESCRIPTION	SIG	CHK	DATE
A	Construction Issue	M.J.	L.W.	27.01.2025
B	Levels updated to suit Site error	M.J.	L.W.	07.05.2025

CALA HOMES (THAMES) LTD

BROOKLANDS COLLEGE, WEYBRIDGE

MASONRY DETAILS SHEET



ECE PROJECT No	SCALE AT A1	SUITABLE FOR	REV
48175	As indicated	Construction	B
DRAWING NUMBER			
SA00394 - 4208 - S - SPORTS - ZZ			