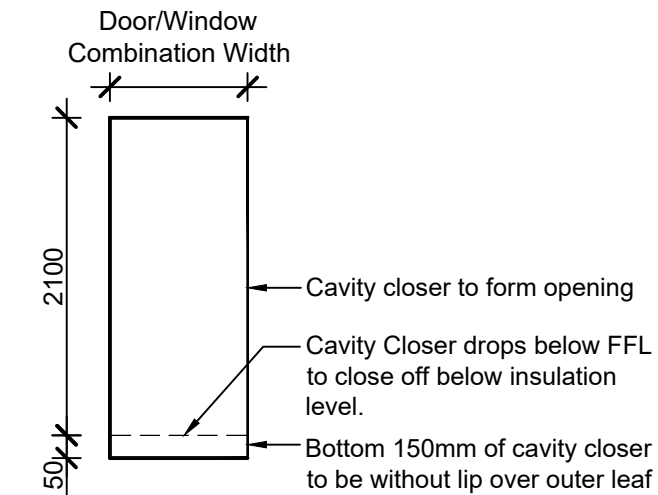


Secondary DPC local to principle entrance to be stepped down within perps and linked to main DPC 150mm above adjacent ground levels

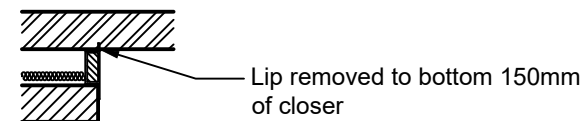
Elevation of Secondary DPC

Detail A

Scale: 1:50



Elevation of cavity closer



Plan of closer below FFL

Detail B

Scale: 1:50

Refer to external works plan and project engineers specific cross-sectional details for pathway construction.

*A minimum 1200mm length landing is to be provided immediately before the entrance door and shall exclude any door opening onto it. Where necessary an access ramp no steeper than 1:12 is to link the access landing with surrounding ground levels. When stepped approach to front entrance a minimum 900mm level landing is required immediately before the entrance door. See External Works Plan for final surface treatment to front door.

Secondary DPC provided locally to door opening, both DPC's to be joined & lapped together down face of cavity. See detail A for extent and positioning.

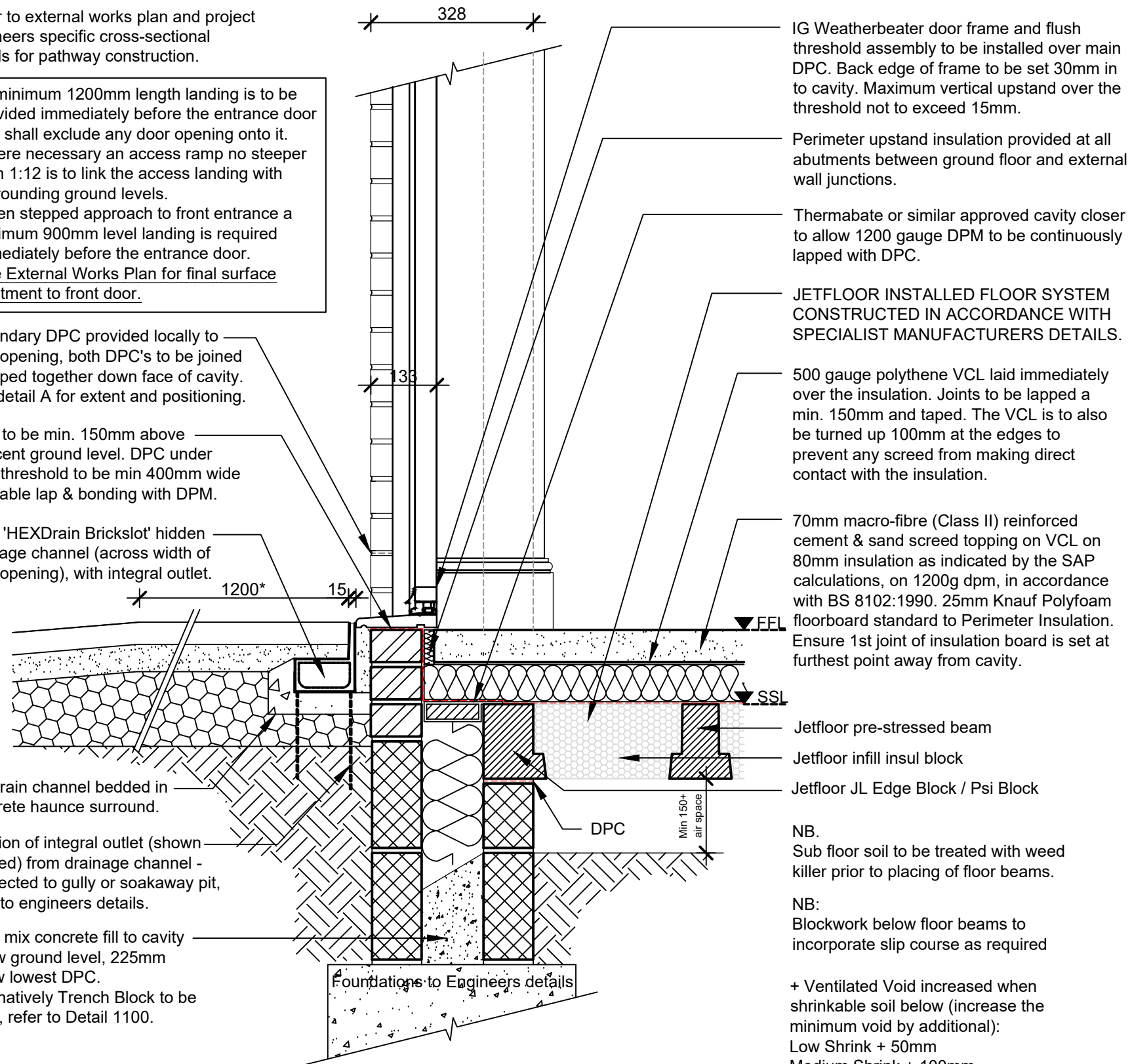
DPC to be min. 150mm above adjacent ground level. DPC under door threshold to be min 400mm wide to enable lap & bonding with DPM.

ACO 'HEXDrain Bricks' hidden drainage channel (across width of door opening), with integral outlet.

Hexdrain channel bedded in concrete haunch surround.

Position of integral outlet (shown dashed) from drainage channel - connected to gully or soakaway pit, refer to engineers details.

Lean mix concrete fill to cavity below ground level, 225mm below lowest DPC. Alternatively Trench Block to be used, refer to Detail 1100.



IG Weatherbeater door frame and flush threshold assembly to be installed over main DPC. Back edge of frame to be set 30mm in to cavity. Maximum vertical upstand over the threshold not to exceed 15mm.

Perimeter upstand insulation provided at all abutments between ground floor and external wall junctions.

Thermabate or similar approved cavity closer to allow 1200 gauge DPM to be continuously lapped with DPC.

JETFLOOR INSTALLED FLOOR SYSTEM CONSTRUCTED IN ACCORDANCE WITH SPECIALIST MANUFACTURERS DETAILS.

500 gauge polythene VCL laid immediately over the insulation. Joints to be lapped a min. 150mm and taped. The VCL is to also be turned up 100mm at the edges to prevent any screed from making direct contact with the insulation.

70mm macro-fibre (Class II) reinforced cement & sand screed topping on VCL on 80mm insulation as indicated by the SAP calculations, on 1200g dpm, in accordance with BS 8102:1990. 25mm Knauf Polyfoam floorboard standard to Perimeter Insulation. Ensure 1st joint of insulation board is set at furthest point away from cavity.

Jetfloor pre-stressed beam

Jetfloor infill insul block

Jetfloor JL Edge Block / Psi Block

NB.
Sub floor soil to be treated with weed killer prior to placing of floor beams.

NB:
Blockwork below floor beams to incorporate slip course as required

+ Ventilated Void increased when shrinkable soil below (increase the minimum void by additional):
Low Shrink + 50mm
Medium Shrink + 100mm
High Shrink + 150mm.

The formation of the Structural slab level on site is critical. At all times, the Ground Worker must work to the levels provided on the specific job details, providing split courses of blockwork as required. Any change from these levels must be reported to the Site Manager immediately.

DOOR LEVEL THRESHOLD DETAIL

Scale 1:10

Notes

All dimensions to be checked on site prior to the commencement of construction and any discrepancy should be reported to the Site Manager.

This drawing may not be reproduced in any part or form without written consent.

All copyrights reserved.

Sub-Contractors MUST ensure that they have the latest issue drawing before they commence work on site.

Rev	Date	Description	Init.
B	16.02.24	Construction Issue - Subject to coordination	MB
A	26.06.23	Amended Cavity Width	DF

Job title

Brooklands College
Weybridge
Standard Details

Drawing title

Jetfloor Detail
Door Threshold
Part M Compliant
(Principle Entrance Only)

Scale 1:10/1:50 @ A3	Drawn ATD
Dwg No. SA00394-SD2230-A-DET	Date Sept 2018
	Rev. B