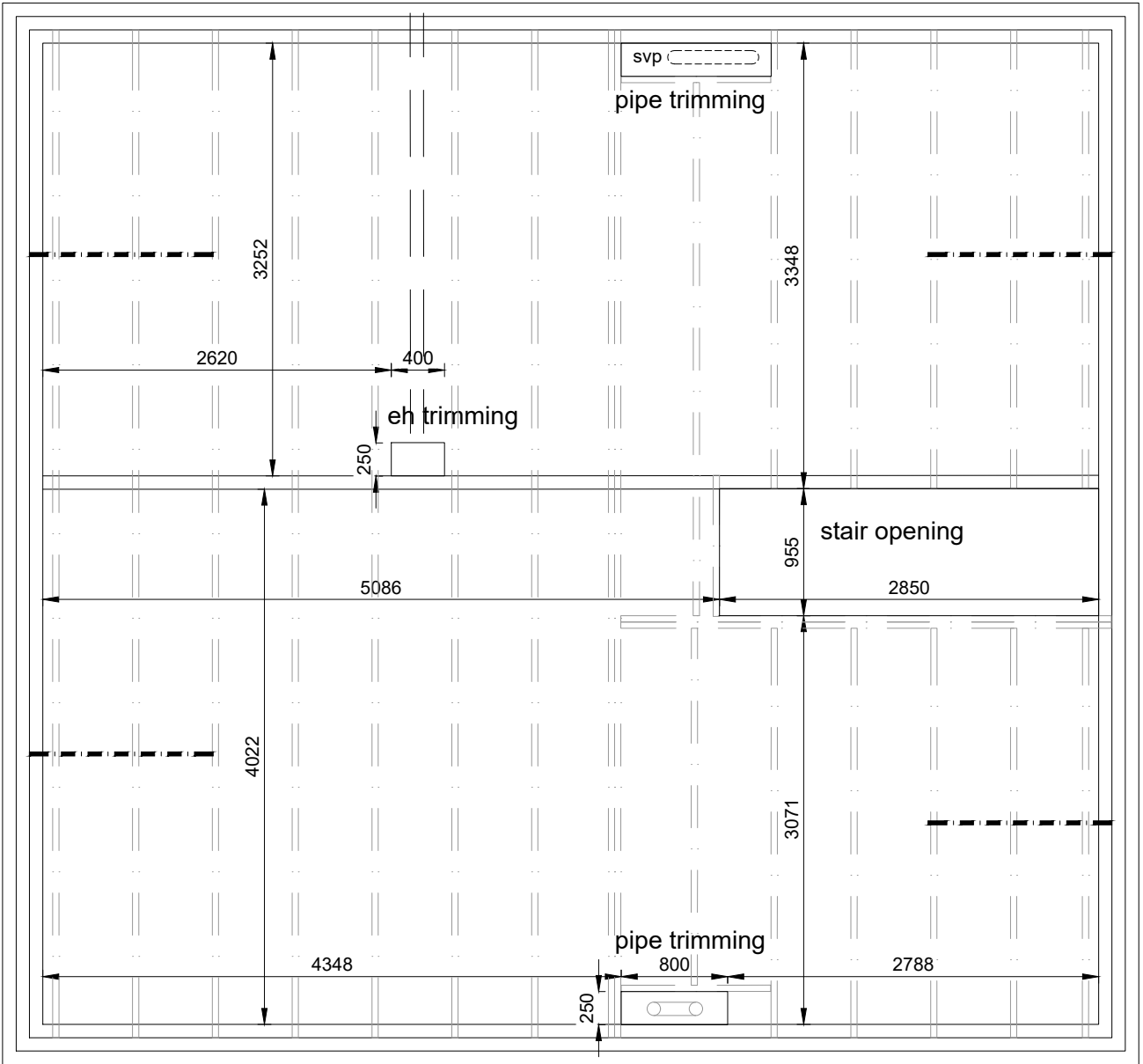
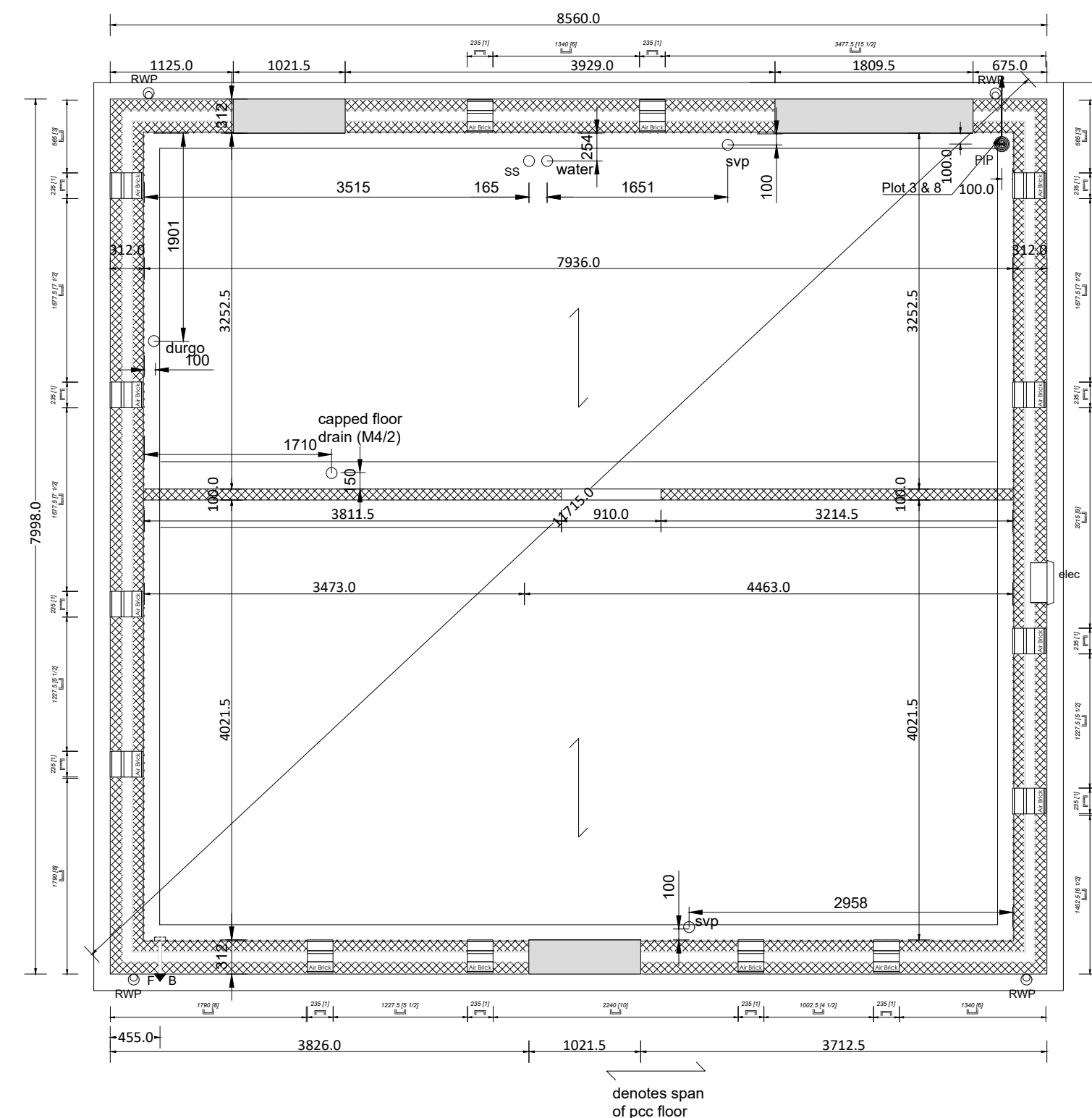


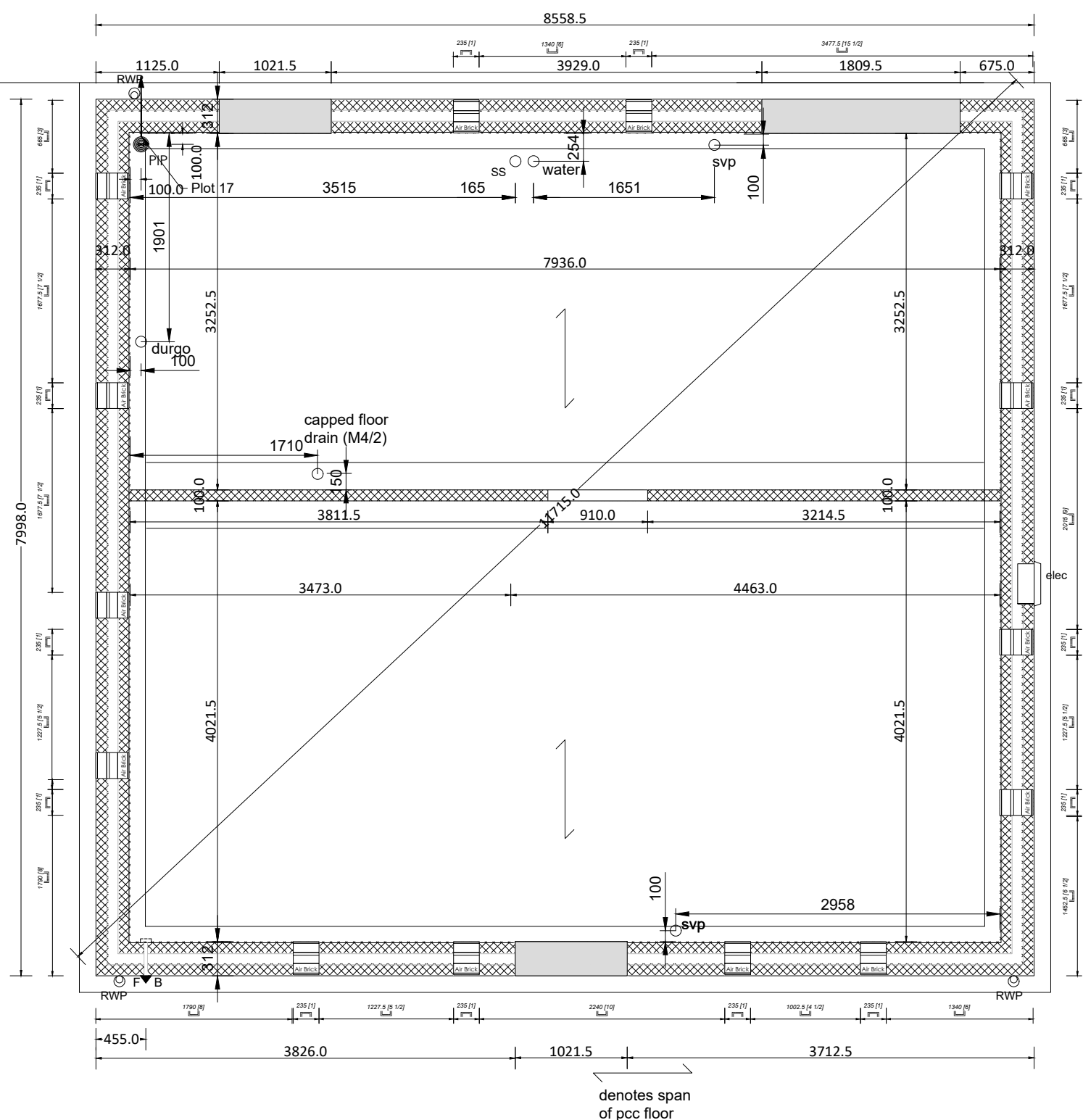
Stair Dimensions



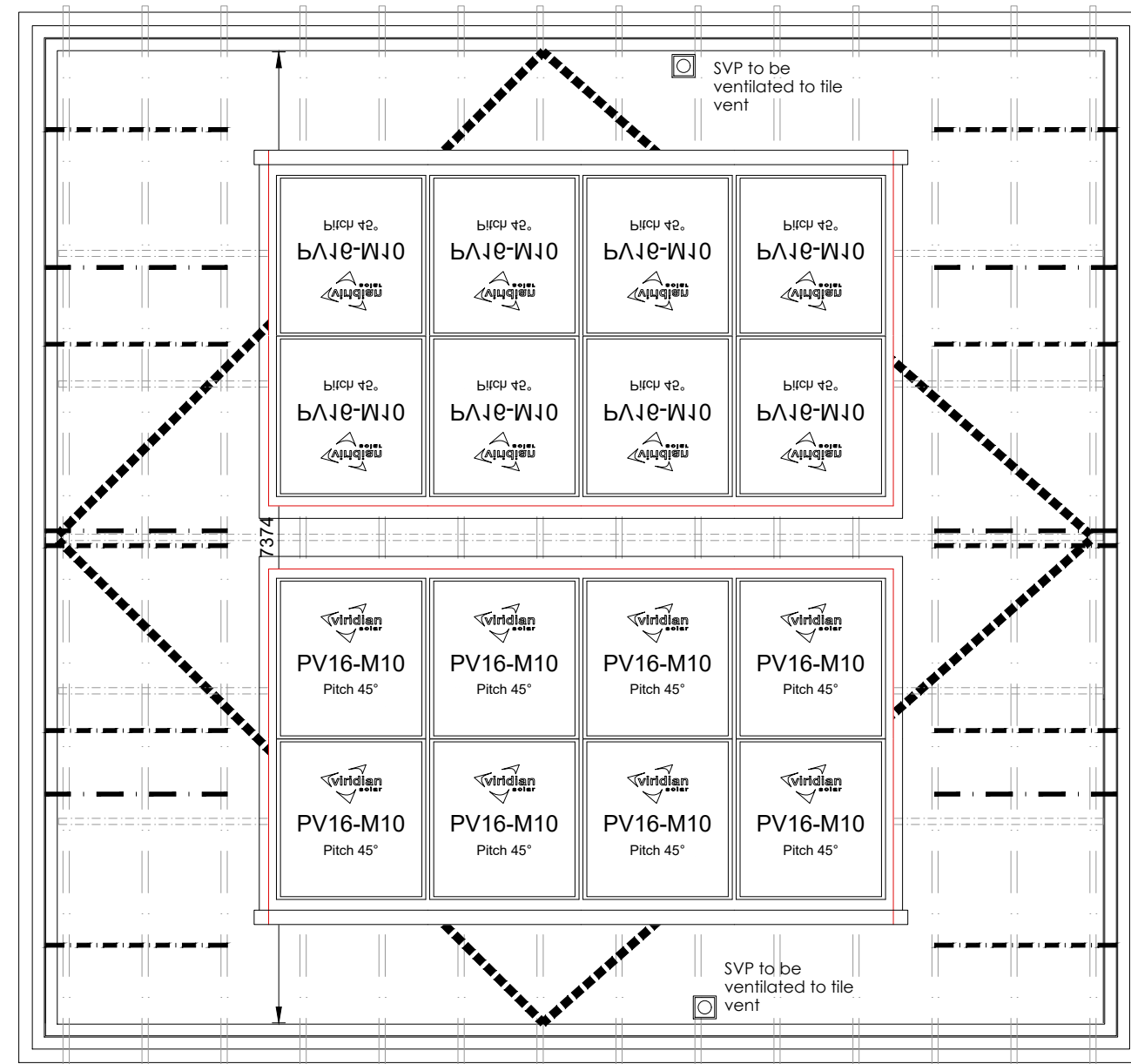
Indicative Joist Layout - See Suppliers Design



Foundation Plan (Plot 3 & 18)



Foundation Plan (Plot 17)



Indicative Truss Layout - See Suppliers Design

General - All Dwellings

DRAINAGE - RWP connection points shown are indicative - refer to drainage layout for plot specific positions.

Durgo valves indicated to SF's to have access panel. Where property is at the head of a drainage run the last manhole must be ventilated - this may require a noted Durgo to be replaced with a SVP.

FOUNDATIONS - are shown indicative - refer to SI/schedule for actual foundation requirement.

GROUND FLOOR - is shown indicative - refer to SI/engineers schedule for floor type/gas membrane requirements.

WALLS - refer to construction specification for all wall and partition types.

MOVEMENT JOINTS - indicated on house types - MJ's shown are to suit concrete bricks - additional joints required for fully rendered elevations - positions may be varied to coincide with material changes but must be spaced as NHBC standards 6.1 D3.

ROOF - refer to construction spec for insulation/ventilation requirements.

FRONT DOOR - min 775 clear opening. Actual structural opening to suit suppliers requirement.

ACCREDITED/CONSTRUCTIVE DETAILS - relevant tick sheets are to be completed for each plot when building to 2006 or later building regulations.

ENERGY EFFICIENT LIGHTING

2006 building regulations 25%

2010 building regulations 75%

2013 building regulations onward 100%.

EXTRACT FANS - Plot dependant, wall to take preference over ceiling, cooker hood to take preference over wall. Where 2 are shown in a room only 1 to be installed.

CARBON MONOXIDE DETECTOR to be fitted to ALL properties with gas installations from 01/09/12.

SALES SPECIFICATION

Reference should also be made to the feature sales specification for the particular development to confirm all items indicated are relevant and to the kitchen suppliers kitchen fitout drawing. Where utility sinks are indicated, these may be a Finishing Touch & will require an extract fan.

PATIOS - refer to site sales spec for patio door/french window and whether patio is provided as standard or finishing touch.

GARAGE DOOR - depending on development, rollershutter or up & over.

GABLE WINDOWS - may not be relevant to all plots depending on orientation.