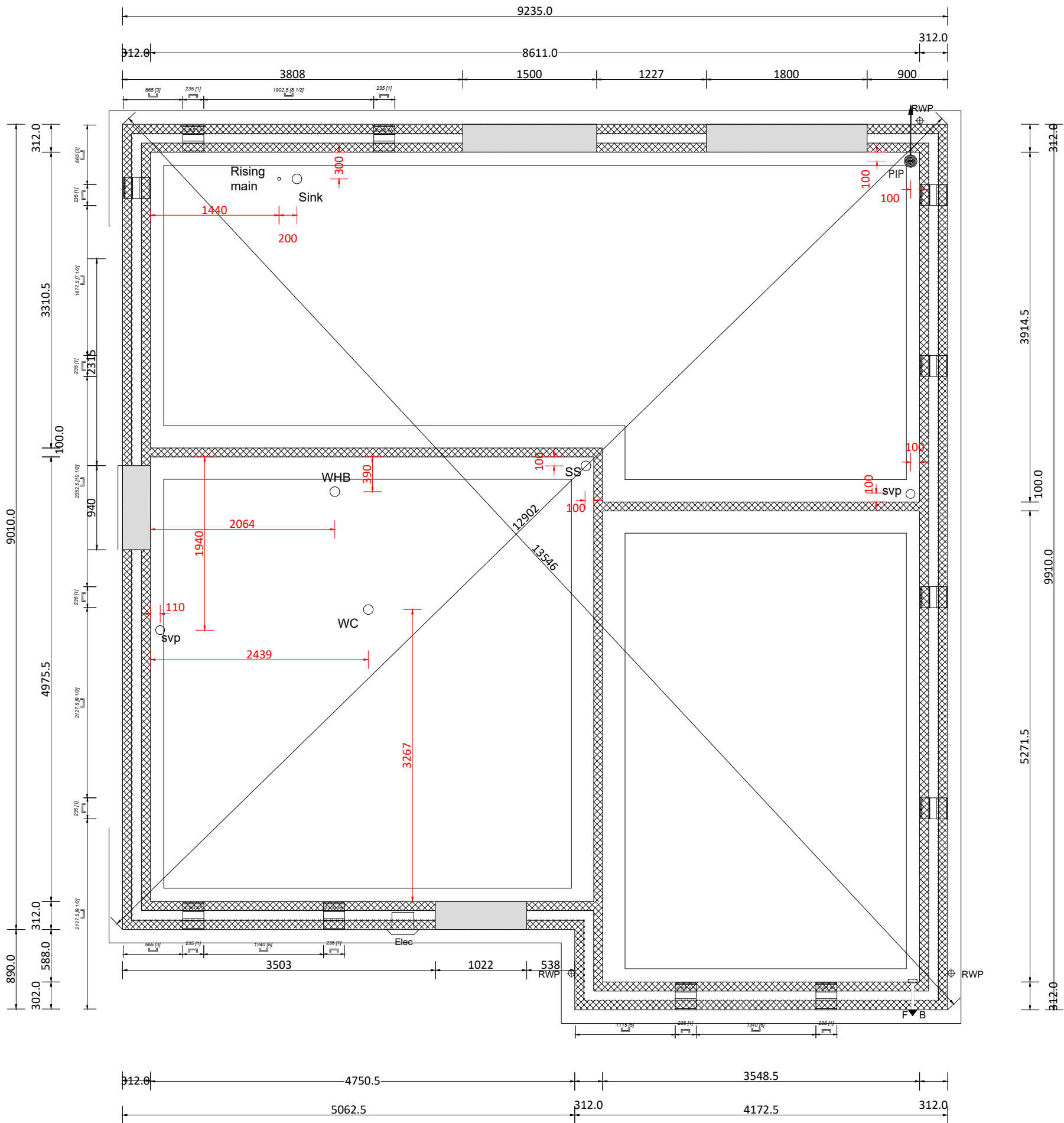
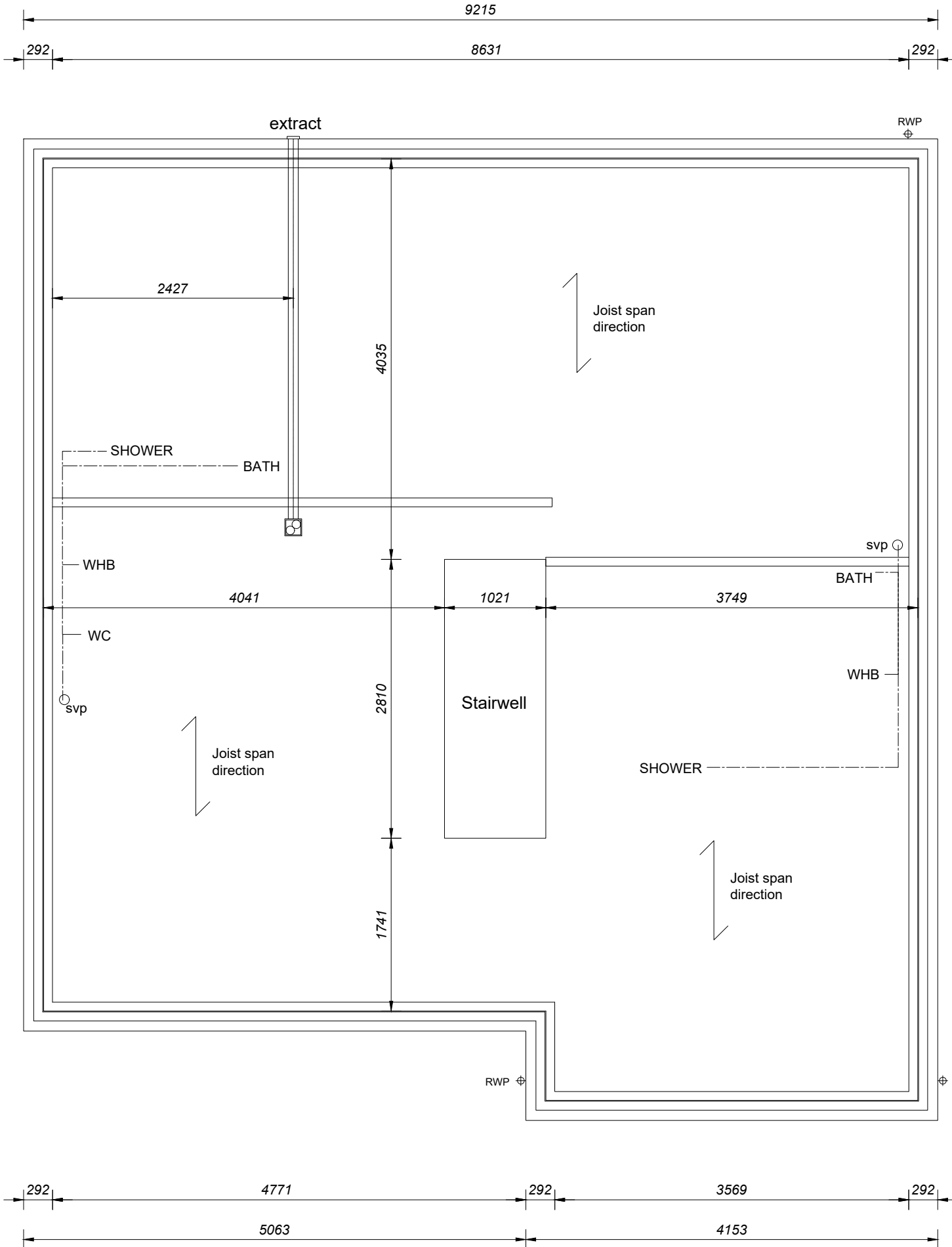


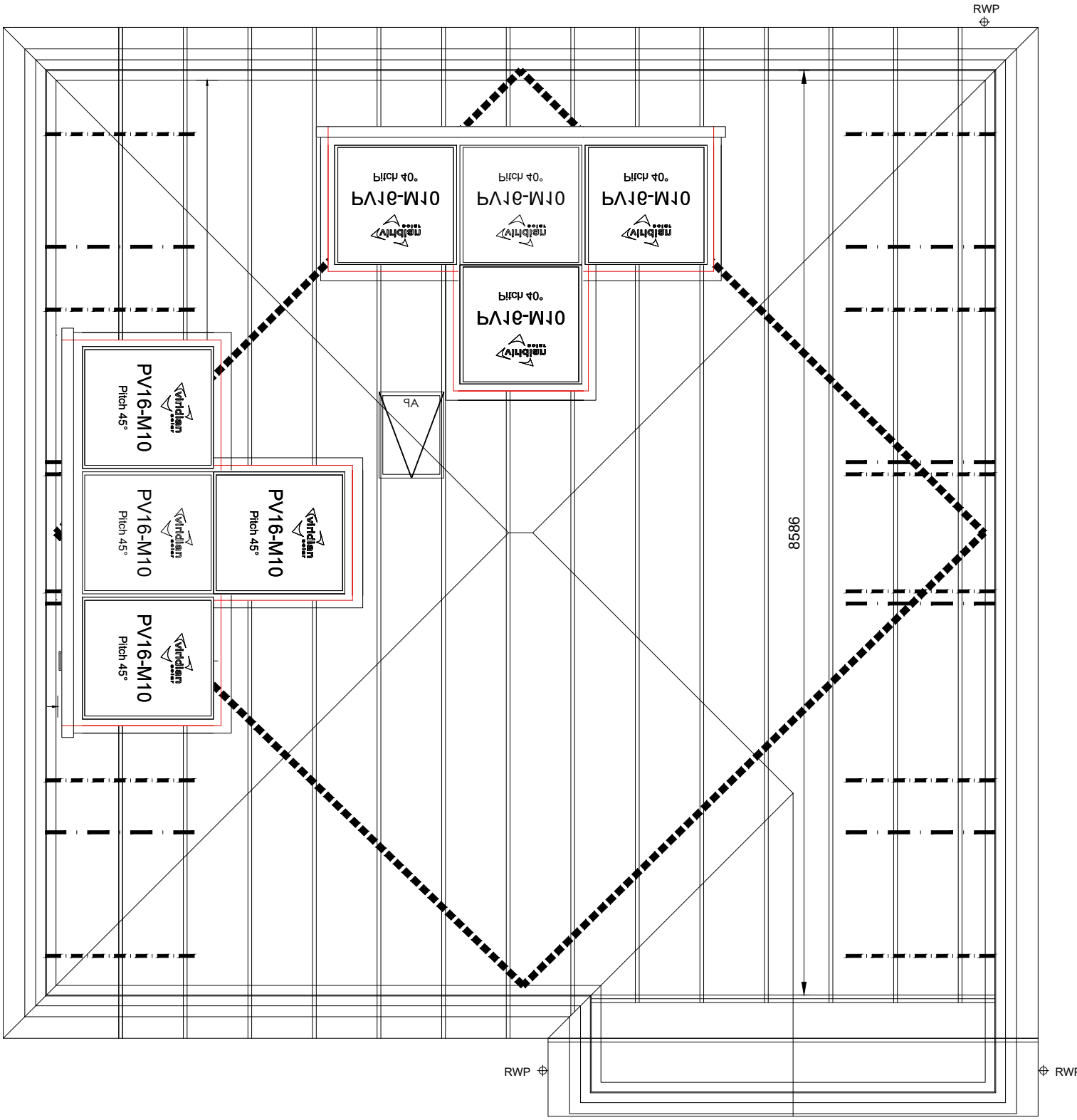
THIS DRAWING IS TO BE READ IN CONJUNCTION WITH THE
PERSIMMON TECHNICAL SPECIFICATION AND SPACE4 DESIGNS



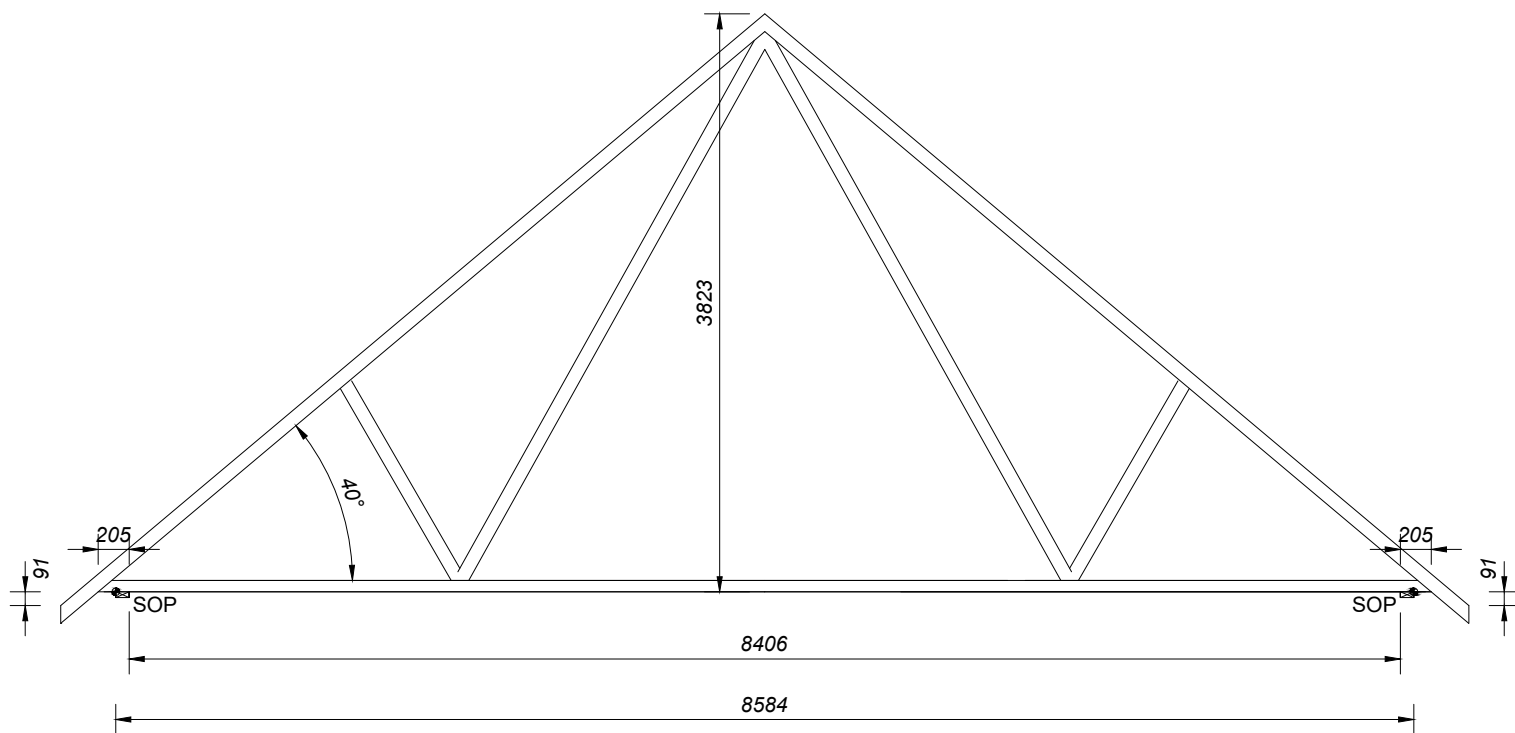
Substructure Plan



Floor Joist Plan



Roof Plan



Truss Profile

Roof trusses to manufacturers design and details, max. 600mm centers.

Roof material (refer to MS for site details) on 38x25 treated softwood battens on NHBC approved non-tearable breathable roofing felt to BS5534: 2003.

89x38mm timber headbinder on 89x38mm top rail.

Refer to standard elevation style, MS and construction detail related to style for further information regarding window cill.

22mm 1&g chipboard flooring on 241mm engineered floor joists designed and installed to man't details.

Structural lintels over windows & doors as per man't design and schedule.

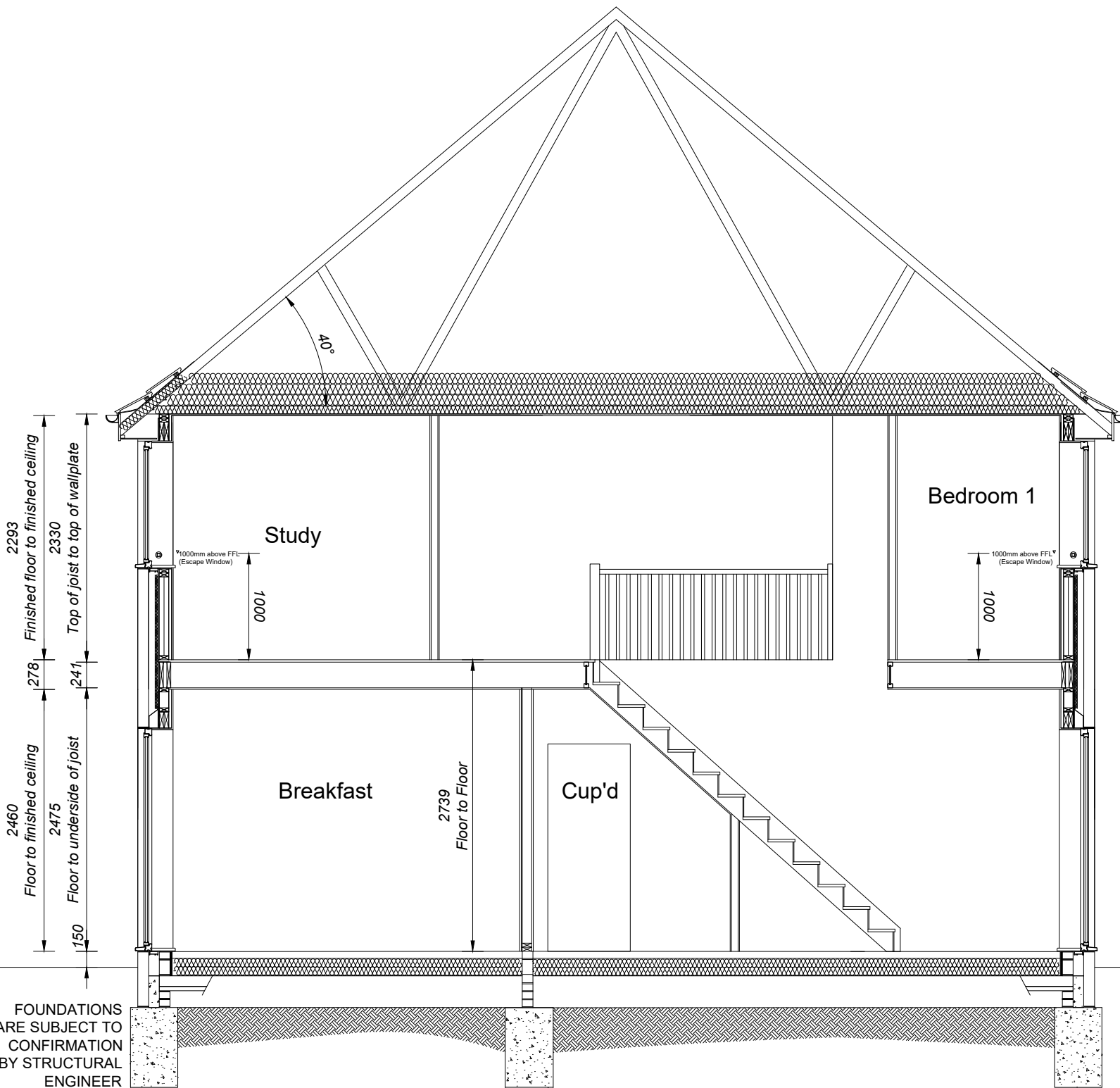
Door & windows be sealed both side (internally and externally). Ensure cavity closer are fixed and suitable sealed to close cavity prior to fitment of windows & doors.

Refer to standard detail.

Cross ventilation Table 1. - NHBC Standards 2020

Shrinkable ratio	Min Depth / Air Void
None	150mm
Low	200mm
Medium	250mm
High	300mm

Note: refer to ground investigation to determine shrinkable ratio.



Section A-A

Ventilated Dry Ridge, ventilation to provide a continuous ventilation area of minimum 5000mm²/m with a 5mm strip along entire length of ridge.

Eaves ventilation to be provided via proprietary over fascia ventilator strips. Proprietary ventilator trays to be fitted between u/s roof and insulation to ensure ventilation is maintained.

Refer to construction specification for loft insulation depth. Ensure 100mm laid between joists with remaining overlay. Maintain 50mm air space at eaves with proprietary ventilator trays.

FGL to be 225mm below FFL.


Foundation depth & width in accordance with Engineers design and detail and approved by BC.

A SUITABLE NUMBER (AT LEAST ONE ON EACH FLOOR) OF SELF CONTAINED SMOKE ALARMS MUST BE INSTALLED. THE ALARMS SHOULD BE INTERCONNECTED AND FIXED TO THE CEILING IN A CENTRAL POSITION BUT AT LEAST 300MM FROM ANY LIGHT FITTING. THE ALARM MUST BE FIXED STRICTLY IN ACCORDANCE WITH THE MANUFACTURERS INSTRUCTIONS.

PROVIDE CAVITY BARRIER TO FULL HEIGHT OF CAVITY WALL AT PARTY/EXTERNAL WALL JUNCTIONS AND TOP CAVITY WALL AND OPENINGS

Rev.	Date	Amendment	By	Chk.
F	29-08-25	Sub's updated.	PVS	-
E	11-07-25	Grading added.	PVS	-
D	23-08-25	Soar updated.	PVS	-
C	26-03-25	Updated to Regge's comments. Drawing naming. External reserved notes. Updated CPC wall line sock. To meet.	PVS	-
B	10-03-25	CU moved to Cup'd. (200mm). Cavity socks added. Sub's revised to 110mm cavity. Window and door schedule updated.	PVS	-
A	19-02-25	Slide window omitted next to front door.	PVS	-

Status -



CHARLES CHURCH

Job LAND AT BASSETTS FARM, HORSMONDEN, KENT

Title 1623-MARYLEBONE (CONTEMPORARY) Section, Sub's, Joist, Truss

Drawn By	PVS	Date	29/8/25
Check	TP	Scale	1:50
Auth.	-	@ A1	

Drawing No. 634-Con-232 Rev F