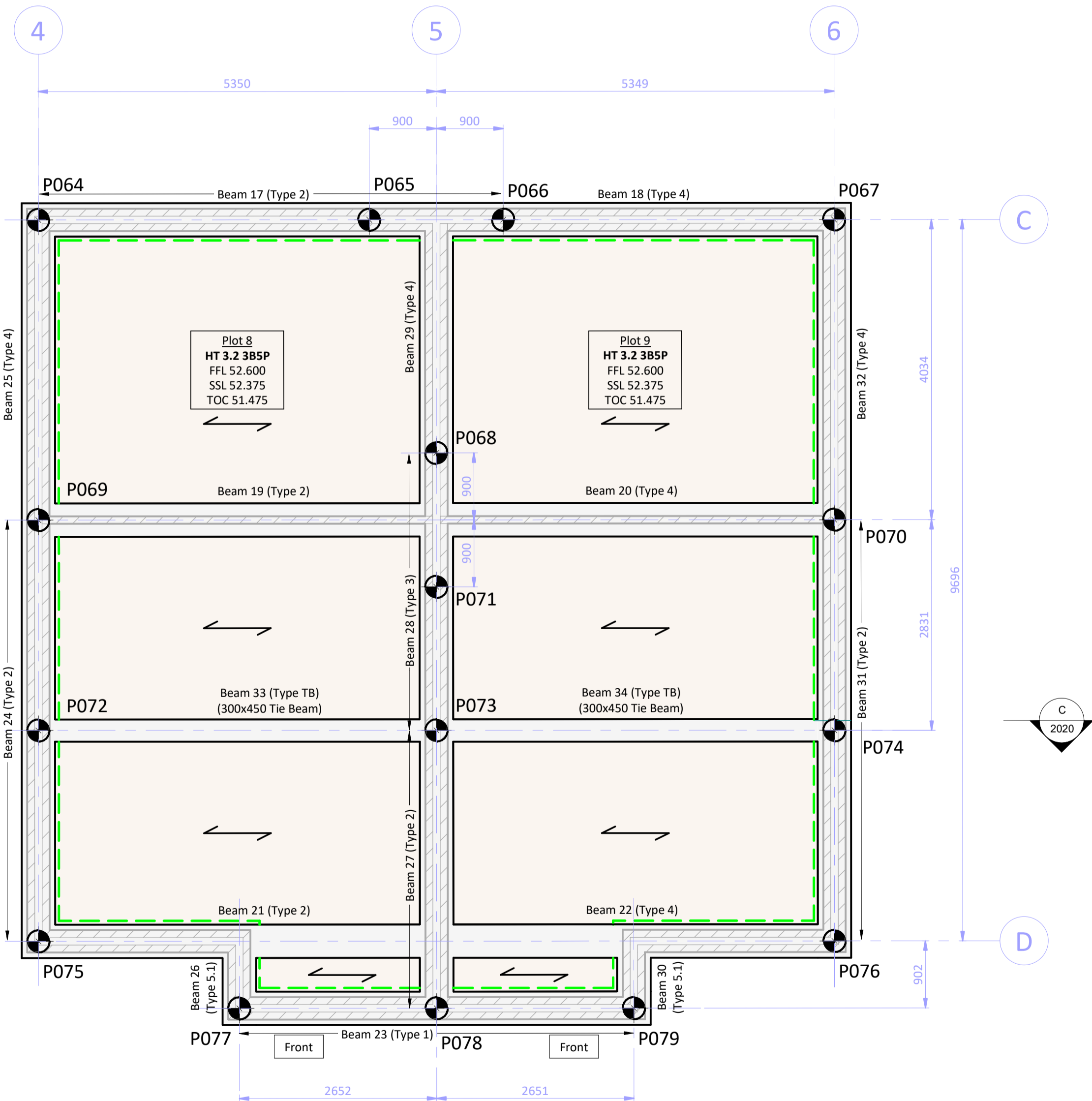
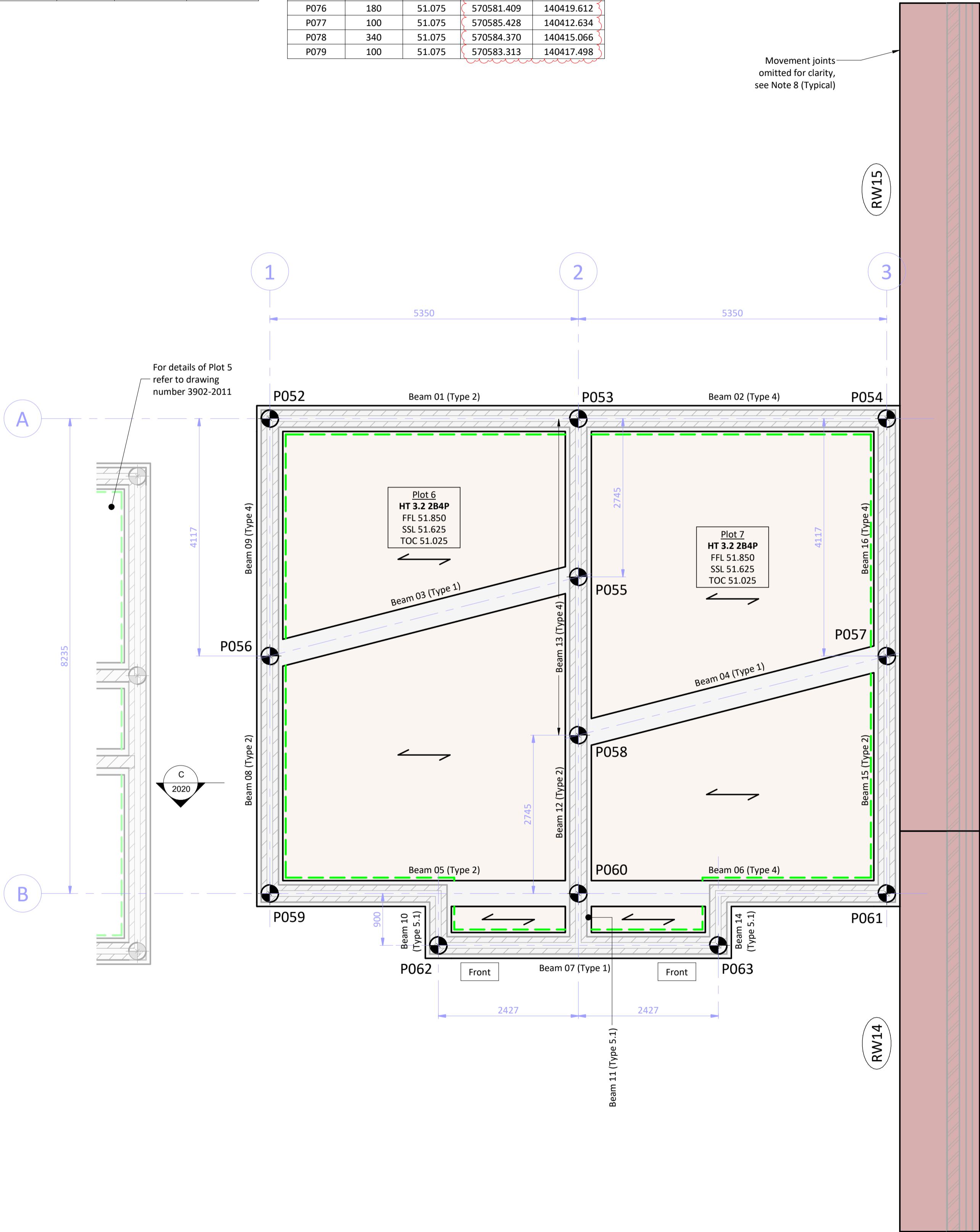


Plots 6-7 Pile Data Table				
Pile No.	Pile Load (kN)	Pile Cut Off Level (m)	Easting (m)	Northing (m)
P052	190	50.625	570582.408	140394.162
P053	380	50.625	570580.277	140399.069
P054	190	50.625	570578.146	140403.977
P055	290	50.625	570582.795	140400.163
P056	330	50.625	570586.185	140395.803
P057	330	50.625	570581.922	140405.617
P058	290	50.625	570585.312	140401.257
P059	190	50.625	570589.961	140397.443
P060	290	50.625	570587.830	140402.350
P061	190	50.625	570585.699	140407.257
P062	100	50.625	570589.623	140400.482
P063	100	50.625	570587.689	140404.935

Plots 8-9 Pile Data Table				
Pile No.	Pile Load (kN)	Pile Cut Off Level (m)	Easting (m)	Northing (m)
P064	210	51.075	570576.787	140405.933
P065	250	51.075	570575.011	140410.014
P066	250	51.075	570574.293	140411.664
P067	210	51.075	570572.518	140415.744
P068	410	51.075	570577.526	140412.089
P069	350	51.075	570580.486	140407.541
P070	340	51.075	570576.218	140417.354
P071	170	51.075	570579.177	140412.806
P072	200	51.075	570583.080	140408.668
P073	420	51.075	570580.946	140413.577
P074	200	51.075	570578.814	140418.483
P075	180	51.075	570585.678	140409.798
P076	180	51.075	570581.409	140419.612
P077	100	51.075	570585.428	140412.634
P078	340	51.075	570584.370	140415.066
P079	100	51.075	570583.313	140417.498



LEGEND

- Span direction of precast floor to supplier's design and detail
- Pile position and reference number. Maximum pile load 450kN (SL5)
- Reinforced concrete ground beam 450mm wide x 450mm deep unless noted otherwise. Allow for 160kg/m³ reinforcement
- Retaining wall and RC base with A393 top and bottom
- Substructure Blockwork Minimum compressible strength 7.3N/mm² Class (II) mortar designation below dpc
- Claymaster compressible material to inside face of foundation as noted on plan. Refer to Structa drawing 3902-2005 for details
- FFL Finished Floor Level
- SSL Structural Slab Level
- TOC Top of Concrete level
- Front Front entrance door location

HEALTH, SAFETY & ENVIRONMENT:

It is the responsibility of the client to ensure that those undertaking the works are competent and experienced in the type of work to be undertaken.

In addition to the hazards usually associated with the types of work detailed on this drawing, the following specific hazards have been identified through design risk assessment. The planning and execution of the works should take into account all usual and specific hazards.

Hazards should also be taken into account in the maintenance, operation, decommissioning and demolition of the works.

- Live services may be present on site
- Existing ground is/may be contaminated
- Deep excavations necessary
- Ground conditions may be unstable during excavation
- The stability of adjacent foundations will need to be considered during excavation works
- Piling rig and working platform on sloping site

NOTES:

- All dimensions are in millimetres (mm) and levels in metres (m) Above Ordnance Datum (mAOD) unless noted otherwise.
- Do not scale from this drawing.
- The copyright in this drawing belongs to Structa LLP; the designs and details may not be used on any project other than that indicated in the titleblock.
- Where CAD and Revit files of the drawings are issued, they are provided for the convenience of others, and shall not be used for construction purposes or relied upon for accuracy or completeness.
- The Engineer is not responsible for dimensional information except where shown on these drawings. All setting out information, dimensions etc. shall be calculated from the Architects drawings.
- For foundation sections, details and construction notes refer to Structa drawing 3902-2005.
- For additional retaining walls and retaining wall setting out refer to relevant Civil Engineering drawings.
- For retaining wall construction details including spacing of movement joints, refer to Structa drawings 3902-2025 and 3902-2026.
- For ground beam general notes and reinforcement details refer to Structa drawings 3902-2006 and bar bending schedule 3902-B2012.
- For material and workmanship requirements refer to notes on relevant drawings and structural specification 3902-SS001.

Rev	Date	Description	Drawn	Checked	Approved
C3	28.02.25	REVISED AS CLOUDED	CDJ	NW	TJS
C2	20.12.24	REVISED AS CLOUDED	CDJ	NW	TJS
C1	11.12.24	CONSTRUCTION ISSUE	GB	NW	TJS
P2	14.03.24	RETAINING WALLS UPDATED AND REFERENCES ADDED	GB	NW	TJS
P1	23.02.24	FIRST ISSUE	GB	NW	TJS

FOR CONSTRUCTION



BASSETTS FARM, HORSMONDEN

LOTS 6-9
FOUNDATION GENERAL ARRANGEMENTS

- Structural
- Civil
- Geo-environmental

London | Hemel Hempstead | Swindon | Warwick | www.structa.co.uk

structa

Drawing No:
3902-2012

Revision:
C3

Plots 6-9 Foundation General Arrangements
(Scale 1 : 50)

SCALE 1:50 @ A1

