

3B5P M4(2)

End
G SERIES

Slab Penetration Layout

Scale
1 : 50

DCC
2

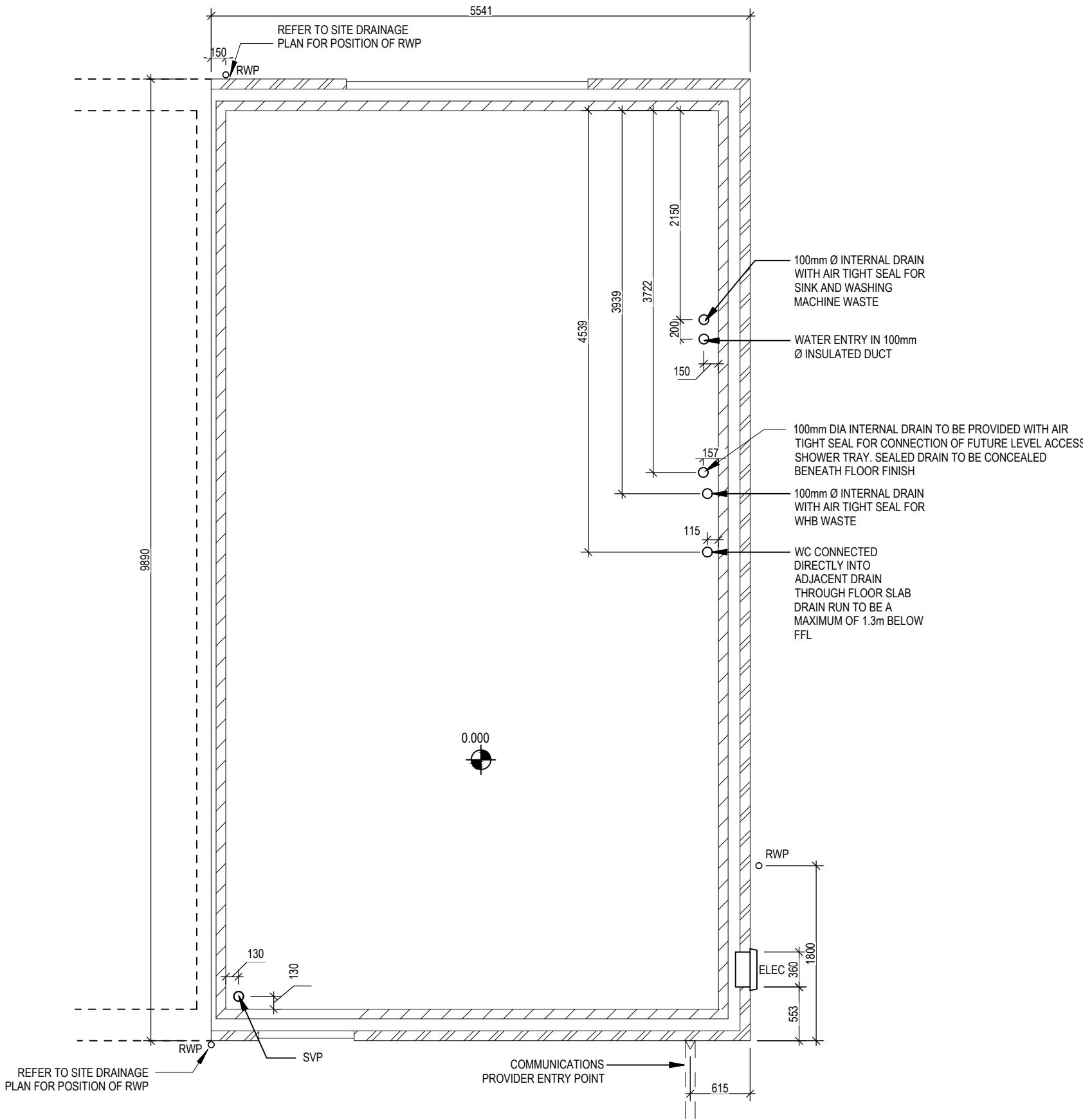
Dwg No
160

Date
Feb 2023

Dwg Rev
A

A | Creaks drainage points amended, telecom entry point moved.

05.04.24



<div>3B5P M4(2)</div> <div>End - V2</div> <div>G SERIES</div>	Slab Penetration Layout	Scale	DCC	Dwg No	A	Cleaks drainage points amended, telecom entry point moved.	05.04.24
		1 : 50	2	161			
		Date	Dwg Rev				
		Feb 2023					

Window Schedule						
Ref	Frame Width	Frame Height	Int Block Opening	Comments	P1A - Glazing	PAS 24 - Locking
W01	1835	1415	1845	Handle 1200mm above FFL	Yes	Yes

NOTE: ALL WINDOWS TO BE FITTED WITH OVER-FRAME TRICKLE VENTILATORS. FOR MINIMUM TRICKLE VENTILATION RATES FOR EACH WINDOW WIDTH SEE WINDOW AND DOOR SCHEDULE.

HANDLES - ALL WINDOW HANDLES TO BE FITTED AT A MAXIMUM OF 1400MM ABOVE FFL UNLESS OTHERWISE STATED IN THE COMMENTS COLUMN.

ALL WINDOWS TO BE SAFE CLEAN IN ACCORDANCE WITH B.S. 8213.

WHOLE HOUSE TRICKLE VENTILATION REQUIREMENT STATED ON VENTILATION DRAWING

Door Schedule - Internal				
Ref	Width	Height	Fire Rating	Code
D03	900	2031		ID1
D04	745	1760		ID13
D05	900	2031		ID1
D06	900	2031		ID1
D07	900	2031		ID1
D08	900	2031		ID1

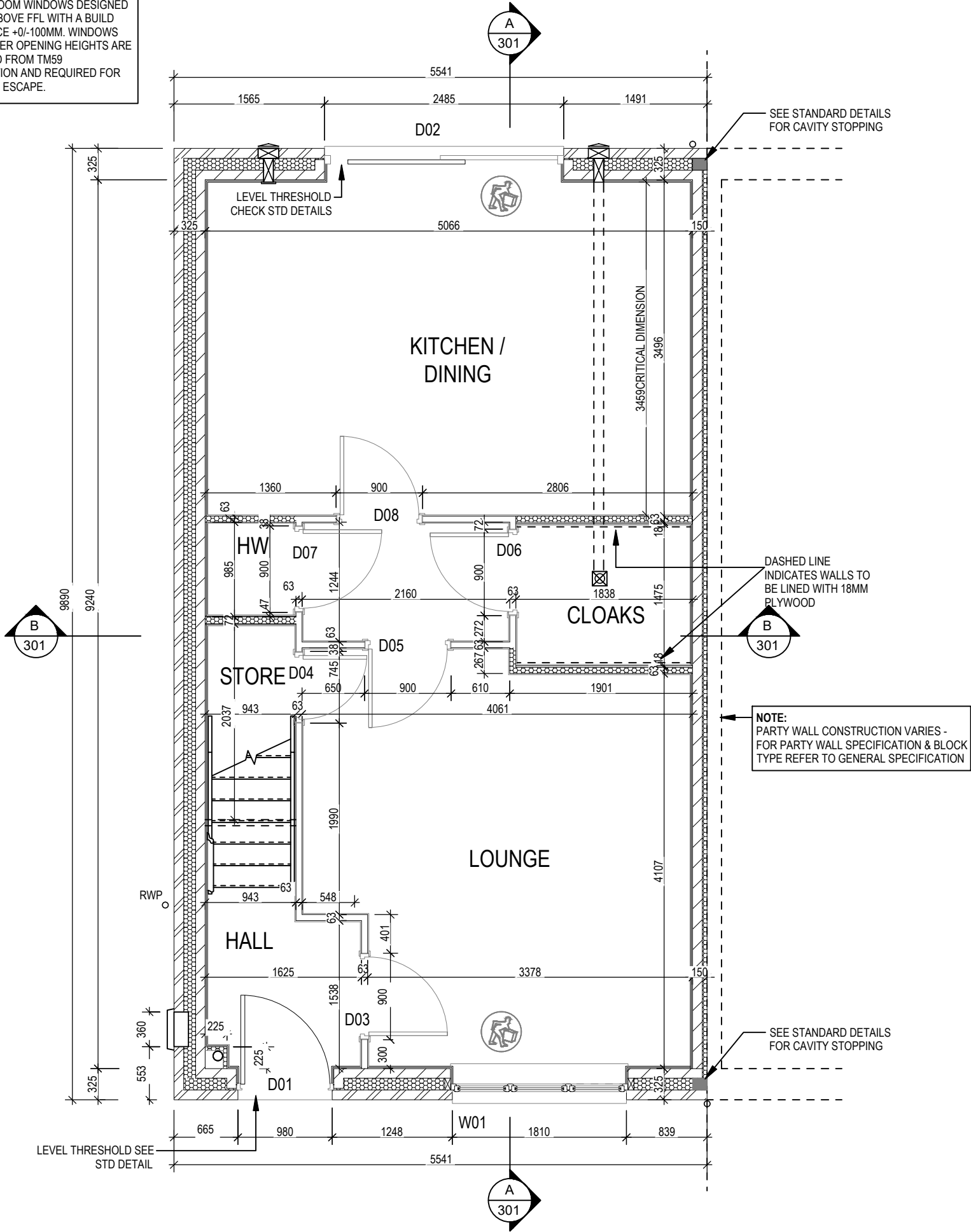
Door Schedule - External						
Ref	Frame Width	Int. Block Opening	Height	Minimum Clear Door Internal Access Width	Model	P1A - Glazing
D01	1005	1045	2100	850	ED06 M4(2)	Yes
D02	2475	2485	2100	850	RD12	Yes

WALL LEGEND

WALL TYPE	SIZE (mm)	STRENGTH (N/mm²)	DENSITY (Kg/m³)	LAMBDA (λ)
BLOCKWORK	100	3.6	600	0.15
40dB STUDWORK	63 (88)	-	-	-

NOTE: ENGINEERING SPREADER BRICK CENTERED UNDER JOIST TO HAVE MINIMUM CRUSHING STRENGTH OF 75N/mm 2. TOP LEVEL TO BE AT 2475mm ABOVE FFL

REFER TO TM59 CALCULATION FOR OPENINGS REMOVING EXCESS HEAT. ALL BEDROOM WINDOWS DESIGNED TO 1.1M ABOVE FFL WITH A BUILD TOLERANCE +0/-100MM. WINDOWS WITH LOWER OPENING HEIGHTS ARE EXCLUDED FROM TM59 CALCULATION AND REQUIRED FOR MEANS OF ESCAPE.



3B5P M4(2)
End
G SERIES

Structural Layout
Ground Floor

Dwg No 201
DCC 2
Scale 1 : 50
Date Feb 2023
Dwg Rev

Window Schedule						
Ref	Frame Width	Frame Height	Int Block Opening	Comments	P1A - Glazing	PAS 24 - Locking
W02	1273	1040	1283	ESC		
W03	710	890	720	OBS		
W04	1273	1040	1283	ESC		
W05	1273	1040	1283	ESC		

REFER TO TM59 CALCULATION FOR OPENINGS REMOVING EXCESS HEAT. ALL BEDROOM WINDOWS DESIGNED TO 1.1M ABOVE FFL WITH A BUILD TOLERANCE +0/-100MM. WINDOWS WITH LOWER OPENING HEIGHTS ARE EXCLUDED FROM TM59 CALCULATION AND REQUIRED FOR MEANS OF ESCAPE.

NOTE: ALL WINDOWS TO BE FITTED WITH OVER-FRAME TRICKLE VENTILATORS. FOR MINIMUM TRICKLE VENTILATION RATES FOR EACH WINDOW WIDTH SEE WINDOW AND DOOR SCHEDULE.

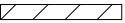

HANDLES - ALL WINDOW HANDLES TO BE FITTED AT A MAXIMUM OF 1400MM ABOVE FFL UNLESS OTHERWISE STATED IN THE COMMENTS COLUMN.

ALL WINDOWS TO BE SAFE CLEAN IN ACCORDANCE WITH B.S. 8213.

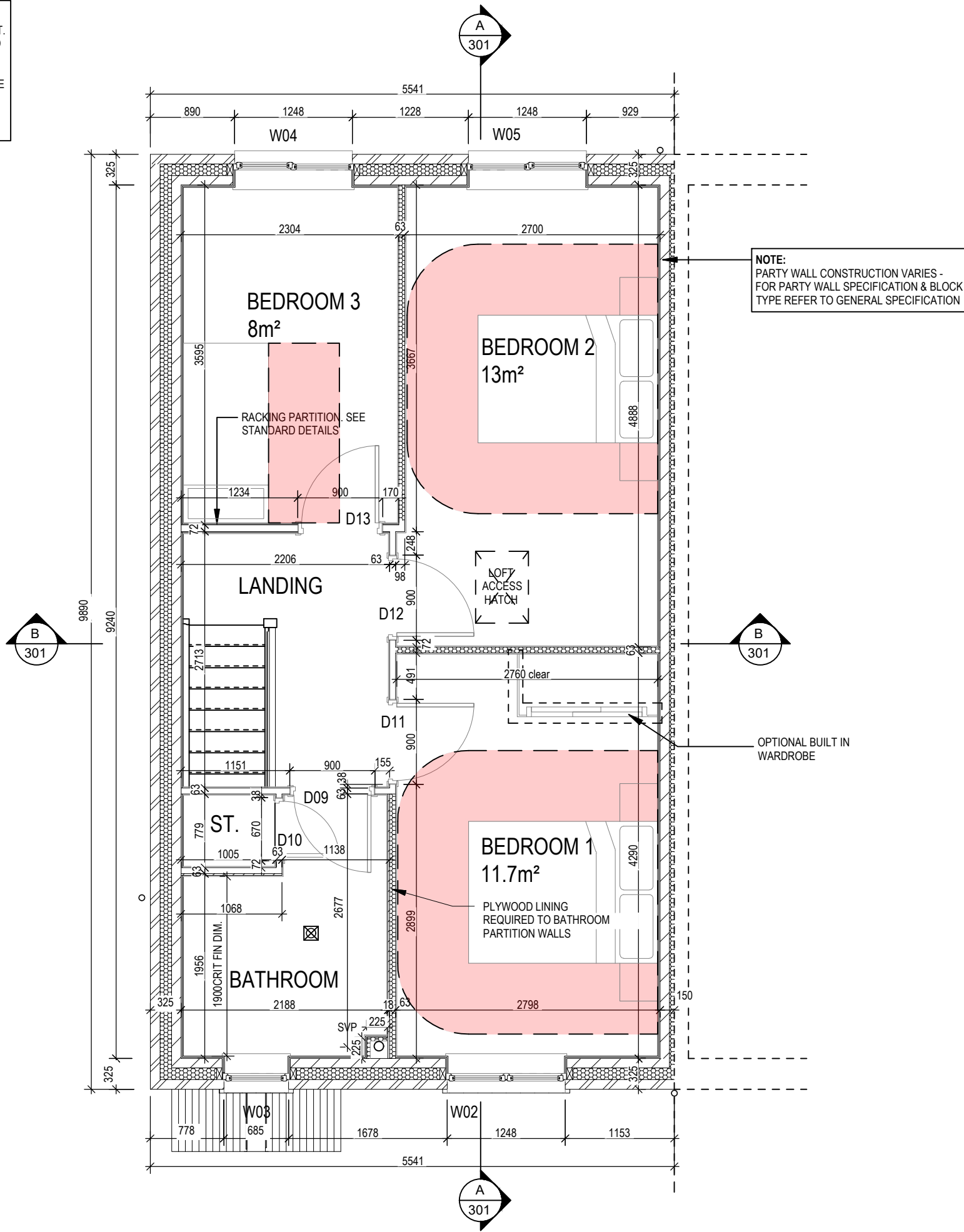
WHOLE HOUSE TRICKLE VENTILATION REQUIREMENT STATED ON VENTILATION DRAWING

Door Schedule - Internal				
Ref	Width	Height	Fire Rating	Code
D09	900	2031		ID1
D10	670	2031		ID4
D11	900	2031		ID1
D12	900	2031		ID1
D13	900	2031		ID1

WALL LEGEND

WALL TYPE	SIZE (mm)	STRENGTH (N/mm²)	DENSITY (Kg/m³)	LAMBDA (λ)
BLOCKWORK 	100	3.6	600	0.15
40dB STUDWORK 	63 (88)	-	-	-

NOTE: ENGINEERING SPREADER BRICK CENTERED UNDER JOIST TO HAVE MINIMUM CRUSHING STRENGTH OF 75N/mm². TOP LEVEL TO BE AT 2475mm ABOVE FFL



3B5P M4(2)
End
G SERIES

Structural Layout
First Floor

Dwg No
202
DCC
2
Scale
1 : 50
Date
Feb 2023
Dwg Rev
A

17.04.25
A Bulkhead store over stairs adjusted.

Window Schedule						
Ref	Frame Width	Frame Height	Int Block Opening	Comments	P1A - Glazing	PAS 24 - Locking
W01	1835	1415	1845	Handle 1200mm above FFL	Yes	Yes

NOTE: ALL WINDOWS TO BE FITTED WITH OVER-FRAME TRICKLE VENTILATORS. FOR MINIMUM TRICKLE VENTILATION RATES FOR EACH WINDOW WIDTH SEE WINDOW AND DOOR SCHEDULE.

HANDLES - ALL WINDOW HANDLES TO BE FITTED AT A MAXIMUM OF 1400MM ABOVE FFL UNLESS OTHERWISE STATED IN THE COMMENTS COLUMN.

ALL WINDOWS TO BE SAFE CLEAN IN ACCORDANCE WITH B.S. 8213.

WHOLE HOUSE TRICKLE VENTILATION REQUIREMENT STATED ON VENTILATION DRAWING

Door Schedule - Internal				
Ref	Width	Height	Fire Rating	Code
D03	900	2031		ID1
D04	745	1760		ID13
D05	900	2031		ID1
D06	900	2031		ID1
D07	900	2031		ID1
D08	900	2031		ID1

Door Schedule - External						
Ref	Frame Width	Int. Block Opening	Height	Minimum Clear Door Internal Access Width	Model	P1A - Glazing
D01	1005	1045	2100	850	ED06 M4(2)	Yes
D02	2475	2485	2100	850	RD12	Yes

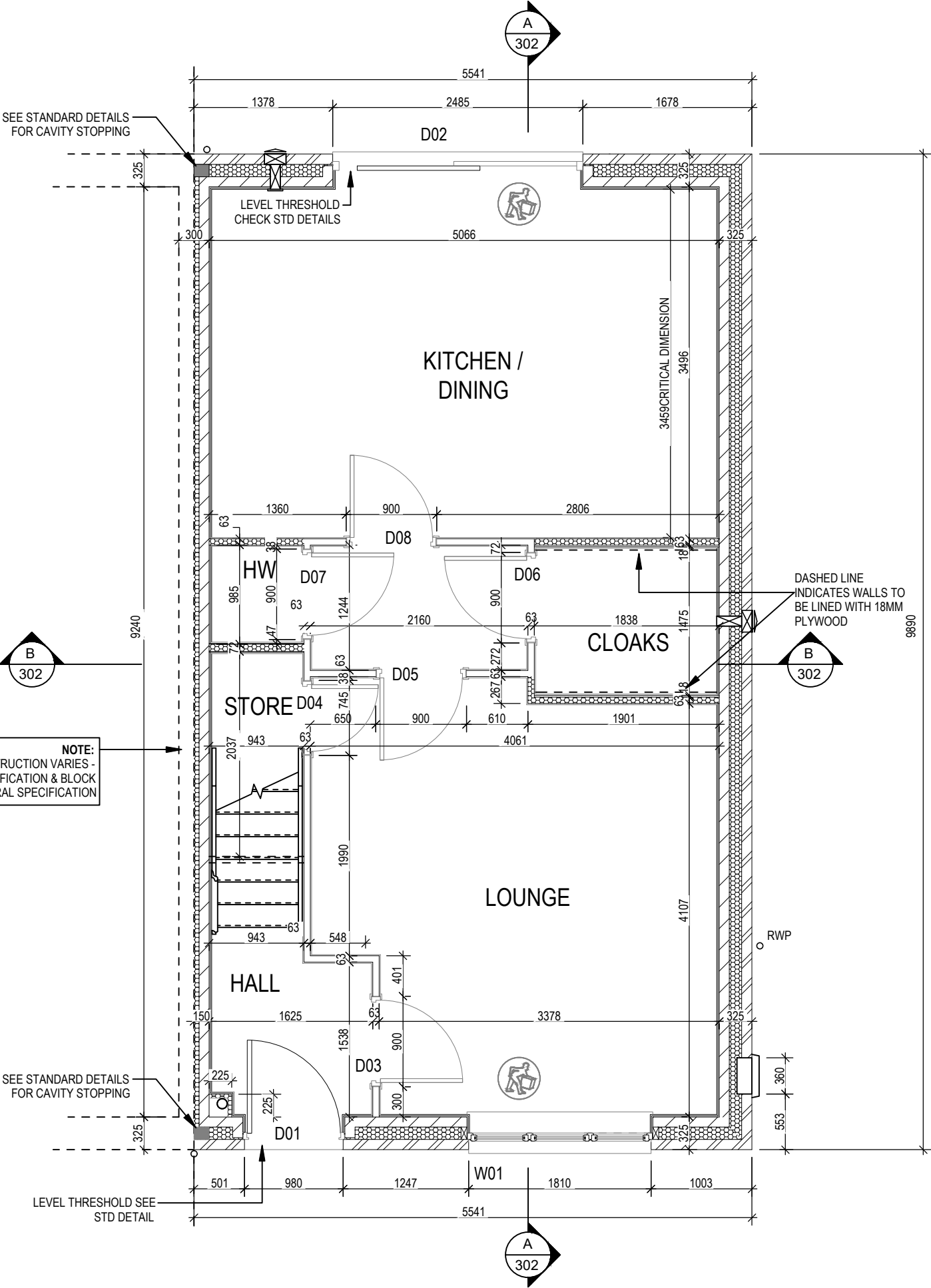
WALL LEGEND

WALL TYPE	SIZE (mm)	STRENGTH (N/mm²)	DENSITY (Kg/m³)	LAMBDA (λ)
BLOCKWORK	100	3.6	600	0.15
40dB STUDWORK	63 (88)	-	-	-

NOTE: ENGINEERING SPREADER BRICK CENTERED UNDER JOIST TO HAVE MINIMUM CRUSHING STRENGTH OF 75N/mm 2. TOP LEVEL TO BE AT 2475mm ABOVE FFL

REFER TO TM59 CALCULATION FOR OPENINGS REMOVING EXCESS HEAT. ALL BEDROOM WINDOWS DESIGNED TO 1.1M ABOVE FFL WITH A BUILD TOLERANCE +0/-100MM. WINDOWS WITH LOWER OPENING HEIGHTS ARE EXCLUDED FROM TM59 CALCULATION AND REQUIRED FOR MEANS OF ESCAPE.

NOTE: PARTY WALL CONSTRUCTION VARIES - FOR PARTY WALL SPECIFICATION & BLOCK TYPE REFER TO GENERAL SPECIFICATION



3B5P M4(2)
End - V2
G SERIES

Structural Layout
Ground Floor

Scale
1 : 50

DCC
2

Dwg No
203

Date
Feb 2023

Dwg Rev

Window Schedule						
Ref	Frame Width	Frame Height	Int Block Opening	Comments	P1A - Glazing	PAS 24 - Locking
W02	1273	1040	1283	ESC		
W03	710	890	720	OBS		
W04	1273	1040	1283	ESC		
W05	1273	1040	1283	ESC		

NOTE: ALL WINDOWS TO BE FITTED WITH OVER-FRAME TRICKLE VENTILATORS. FOR MINIMUM TRICKLE VENTILATION RATES FOR EACH WINDOW WIDTH SEE WINDOW AND DOOR SCHEDULE.

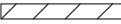

HANDLES - ALL WINDOW HANDLES TO BE FITTED AT A MAXIMUM OF 1400MM ABOVE FFL UNLESS OTHERWISE STATED IN THE COMMENTS COLUMN.

ALL WINDOWS TO BE SAFE CLEAN IN ACCORDANCE WITH B.S. 8213.

WHOLE HOUSE TRICKLE VENTILATION REQUIREMENT STATED ON VENTILATION DRAWING

Door Schedule - Internal				
Ref	Width	Height	Fire Rating	Code
D09	900	2031		ID1
D10	670	2031		ID4
D11	900	2031		ID1
D12	900	2031		ID1
D13	900	2031		ID1

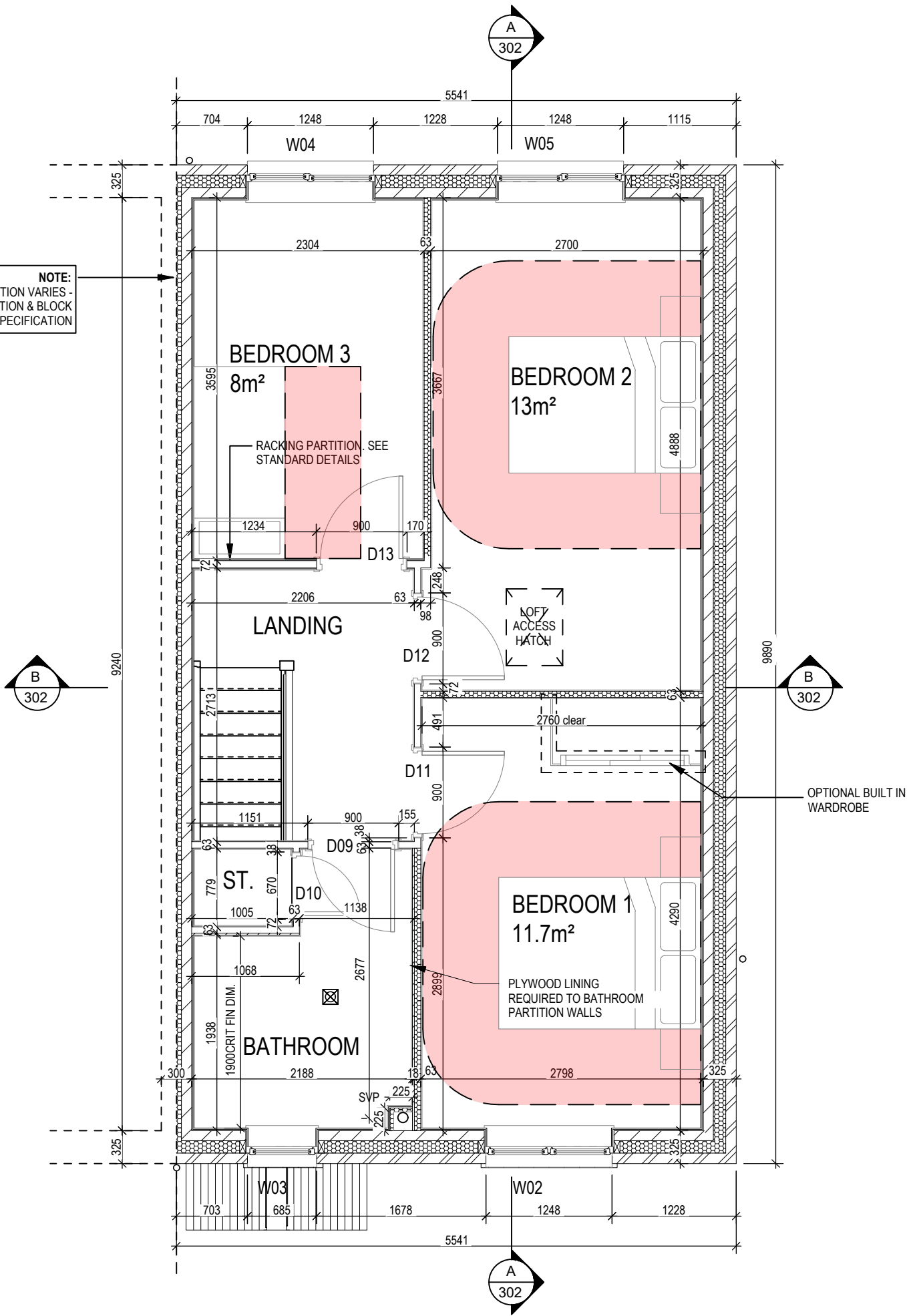
WALL LEGEND

WALL TYPE	SIZE (mm)	STRENGTH (N/mm²)	DENSITY (Kg/m³)	LAMBDA (λ)
BLOCKWORK 	100	3.6	600	0.15
40dB STUDWORK 	63 (88)	-	-	-

NOTE: ENGINEERING SPREADER BRICK CENTERED UNDER JOIST TO HAVE MINIMUM CRUSHING STRENGTH OF 75N/mm². TOP LEVEL TO BE AT 2475mm ABOVE FFL

REFER TO TM59 CALCULATION FOR OPENINGS REMOVING EXCESS HEAT. ALL BEDROOM WINDOWS DESIGNED TO 1.1M ABOVE FFL WITH A BUILD TOLERANCE +0/-100MM. WINDOWS WITH LOWER OPENING HEIGHTS ARE EXCLUDED FROM TM59 CALCULATION AND REQUIRED FOR MEANS OF ESCAPE.

NOTE: PARTY WALL CONSTRUCTION VARIES - FOR PARTY WALL SPECIFICATION & BLOCK TYPE REFER TO GENERAL SPECIFICATION



3B5P M4(2)
End - V2
G SERIES

Structural Layout
First Floor

Dwg No
204

DCC
2

Scale
1 : 50

Date
Feb 2023

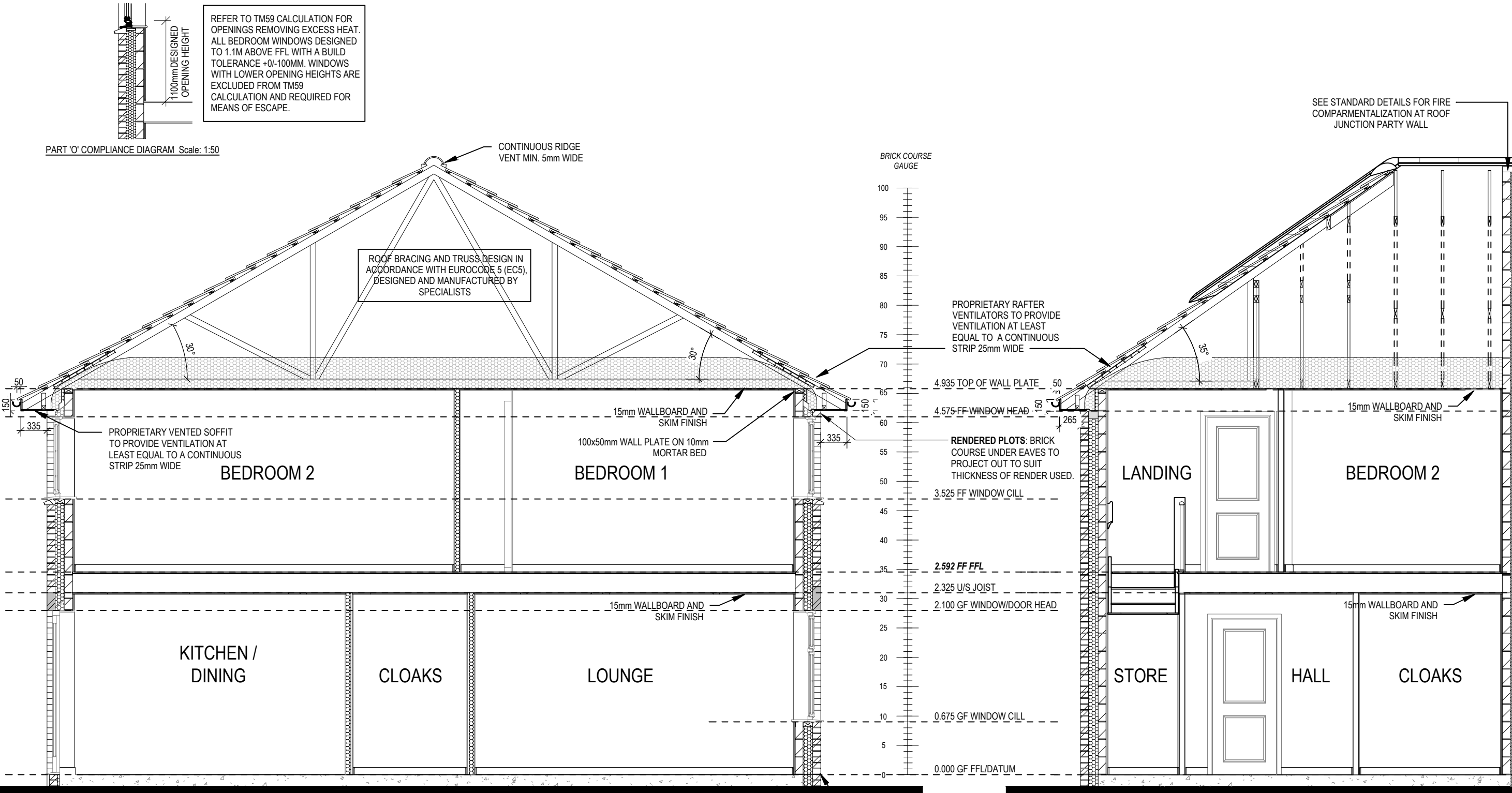
Dwg Rev
A

A

Bulkhead store over stairs adjusted.

17.04.25

This drawing must be read in conjunction with relevant Redrow specifications, standard details & structural calculations. All dimension are taken from face of Brick/Block & Studwork. This drawing is subject to copyright law. Do Not Scale Off This Drawing



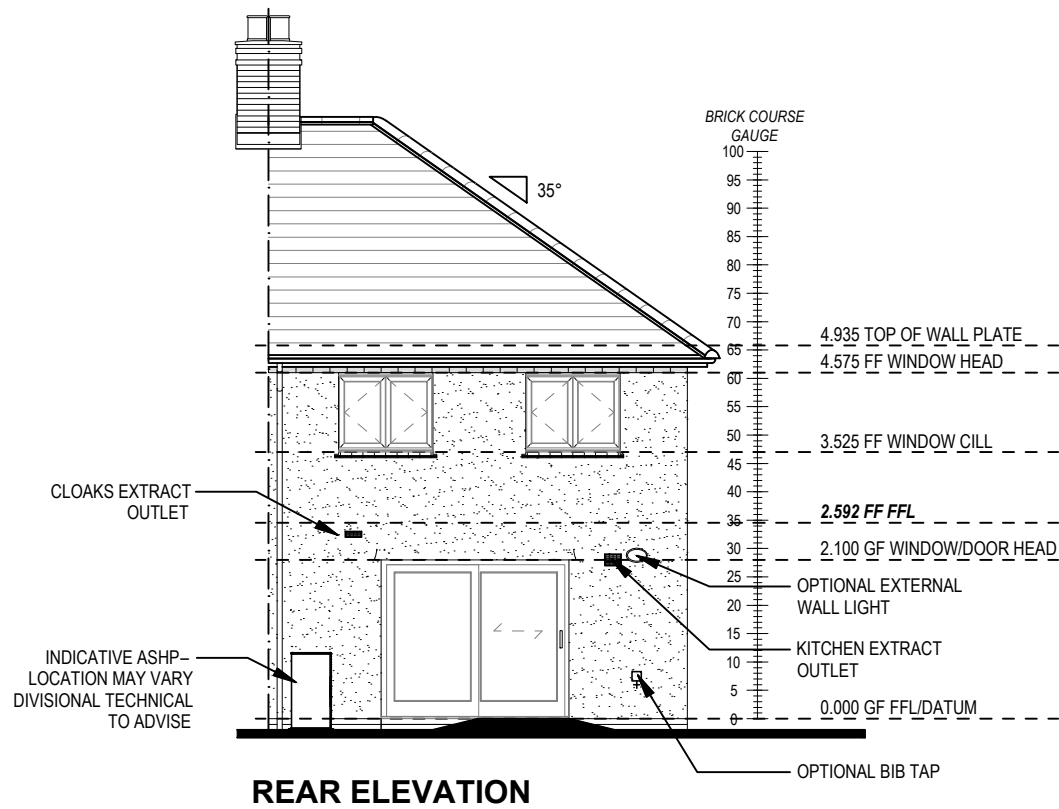
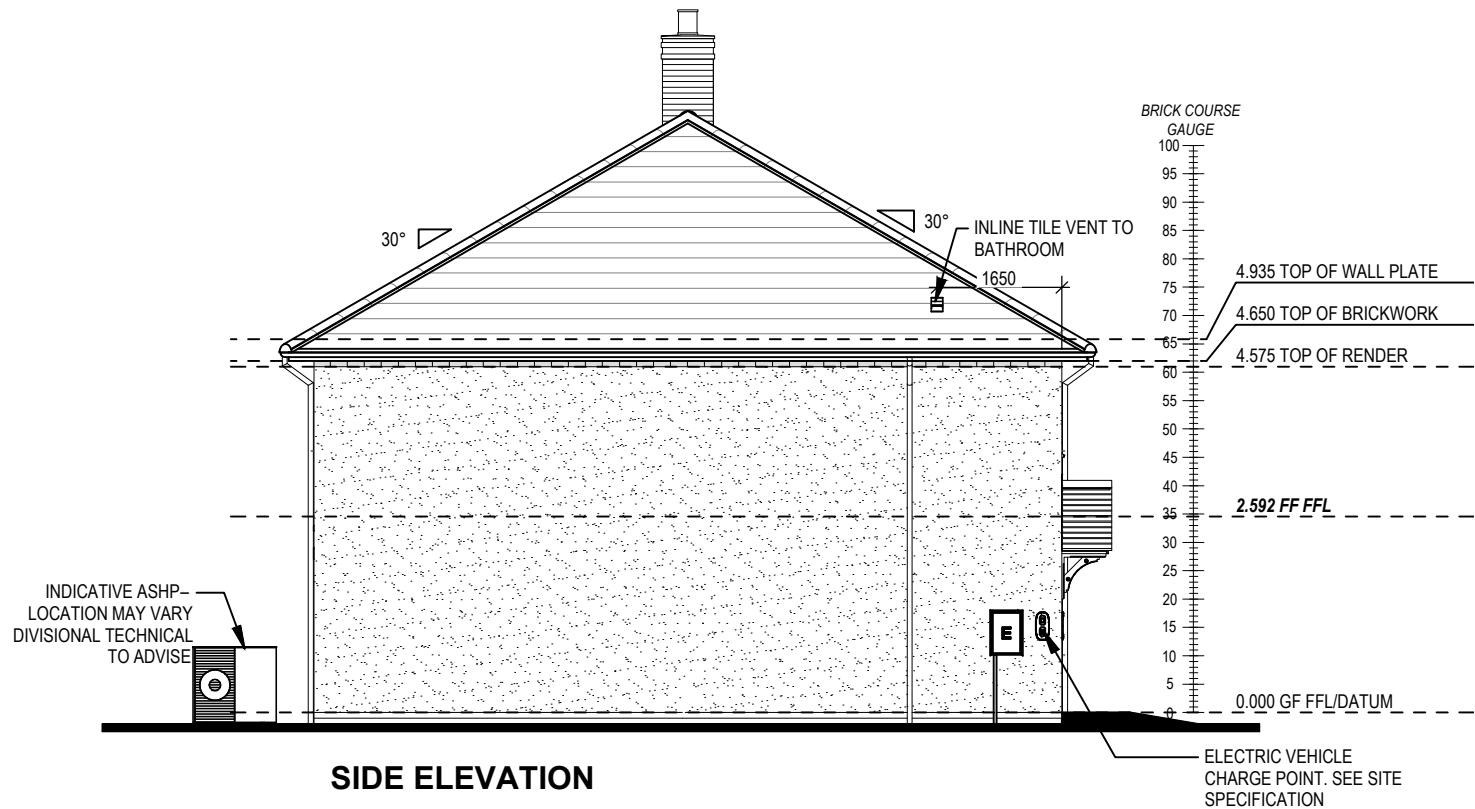
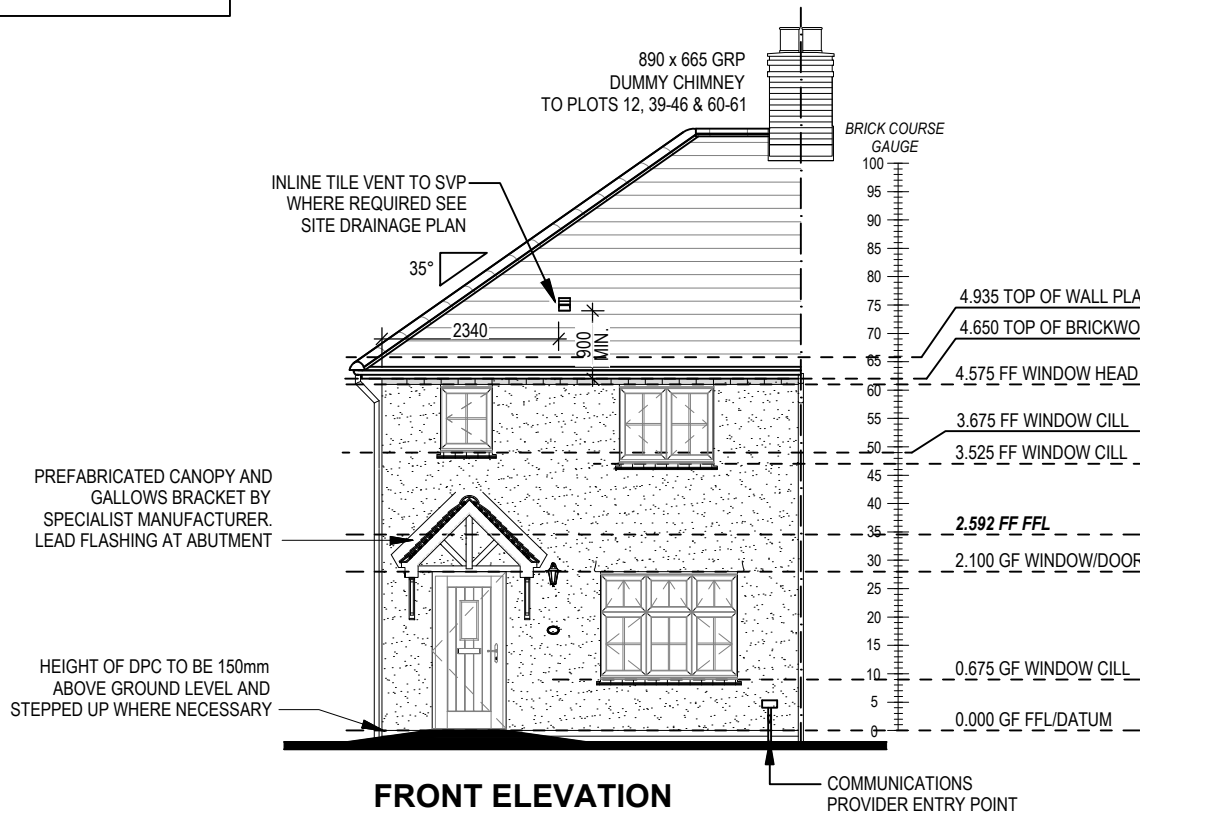
PART 'O' COMPLIANCE DIAGRAM Scale: 1:50

SECTION A-A

SECTION B-B

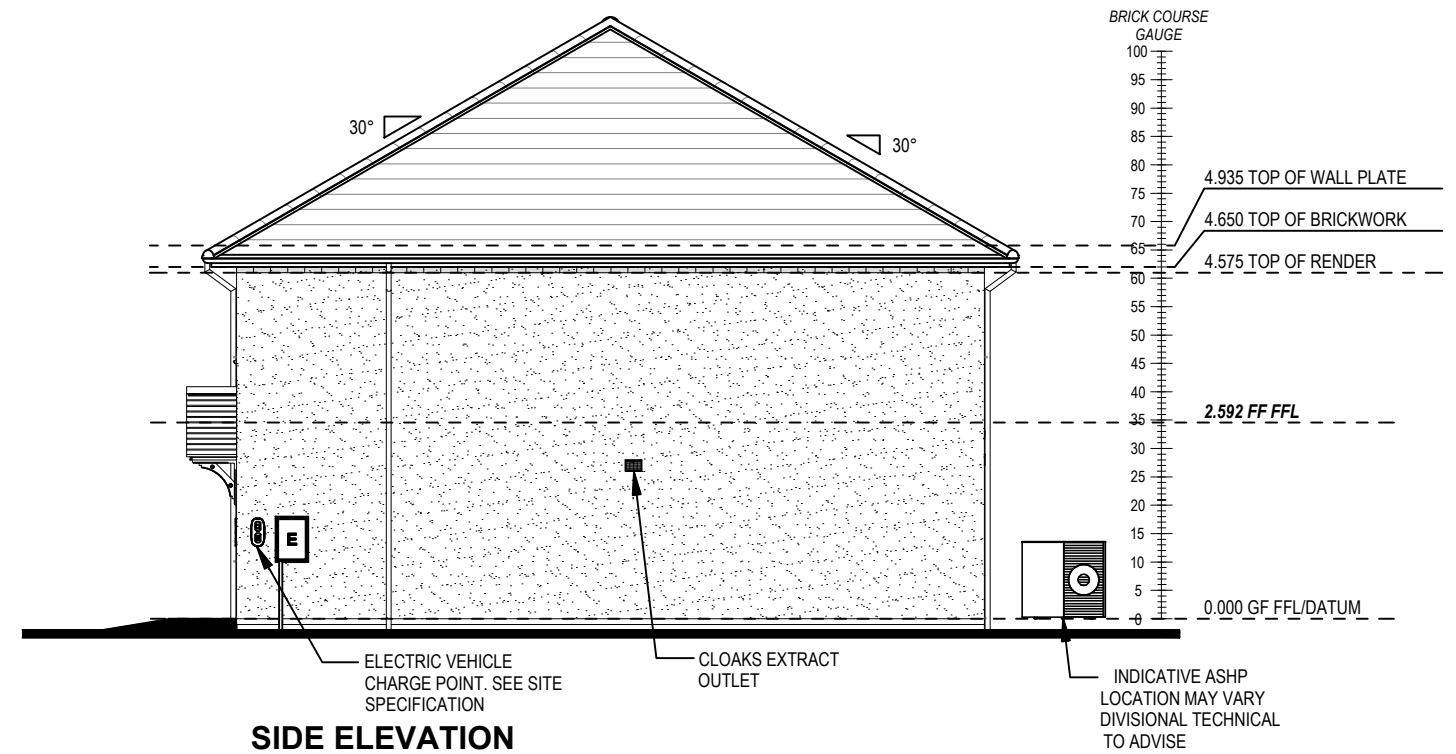
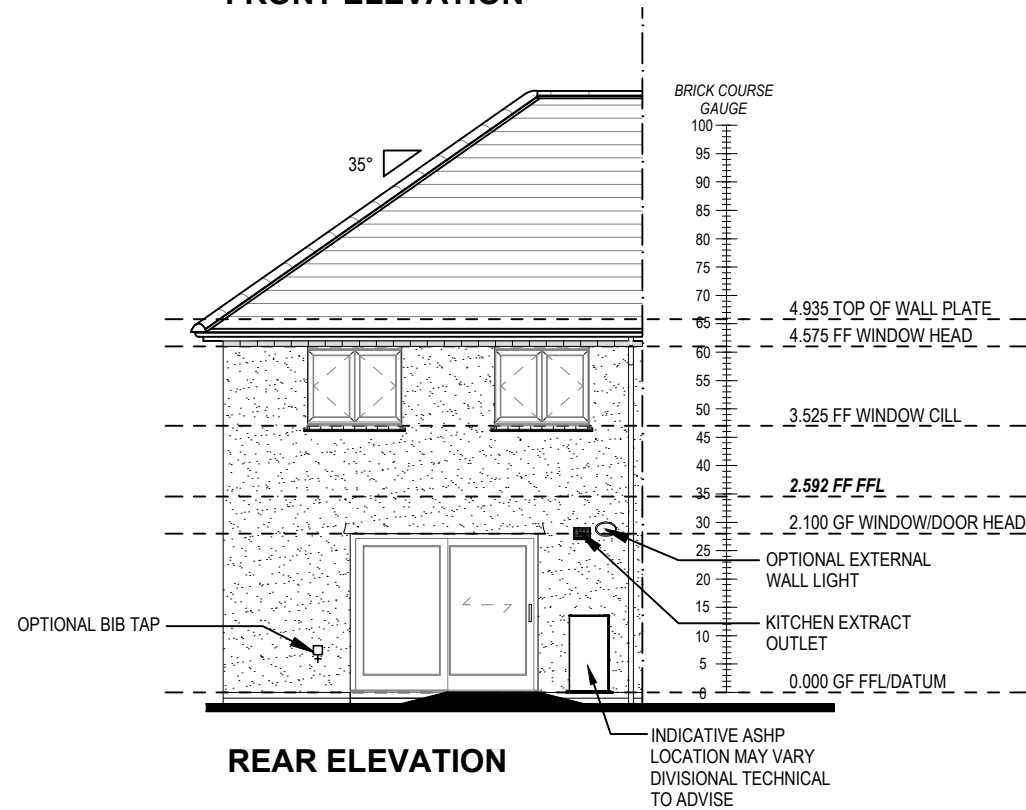
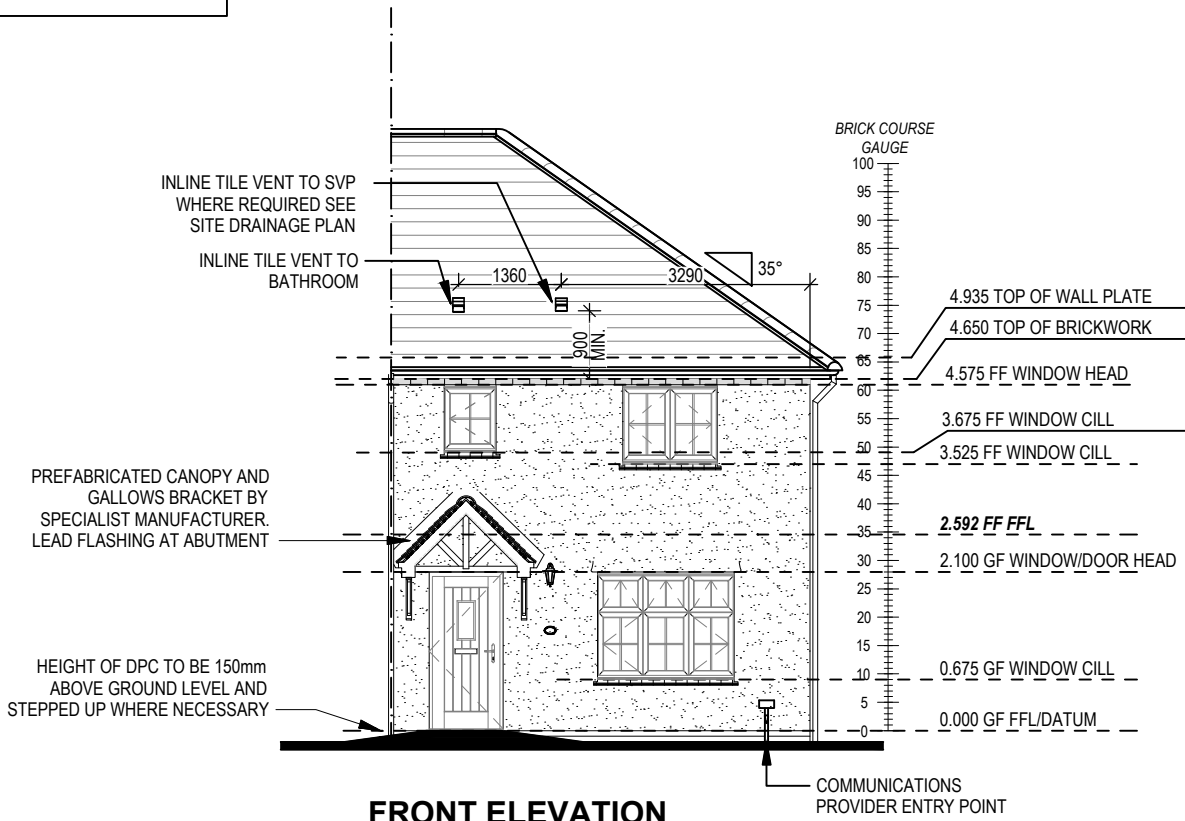
3B5P M4(2) End G SERIES	Section A-A & B-B			Scale 1 : 50	DCC 2	Dwg No 301
				Date Feb 2023		Dwg Rev

REFER TO TM59 CALCULATION FOR OPENINGS REMOVING EXCESS HEAT. ALL BEDROOM WINDOWS DESIGNED TO 1.1M ABOVE FFL WITH A BUILD TOLERANCE +0/-100MM. WINDOWS WITH LOWER OPENING HEIGHTS ARE EXCLUDED FROM TM59 CALCULATION AND REQUIRED FOR MEANS OF ESCAPE.



3B5P M4(2)	Elevations A1	Scale 1 : 100	DCC 2	Dwg No 402	Dwg Rev B	
End G SERIES						

REFER TO TM59 CALCULATION FOR OPENINGS REMOVING EXCESS HEAT. ALL BEDROOM WINDOWS DESIGNED TO 1.1M ABOVE FFL WITH A BUILD TOLERANCE +0/-100MM. WINDOWS WITH LOWER OPENING HEIGHTS ARE EXCLUDED FROM TM59 CALCULATION AND REQUIRED FOR MEANS OF ESCAPE.



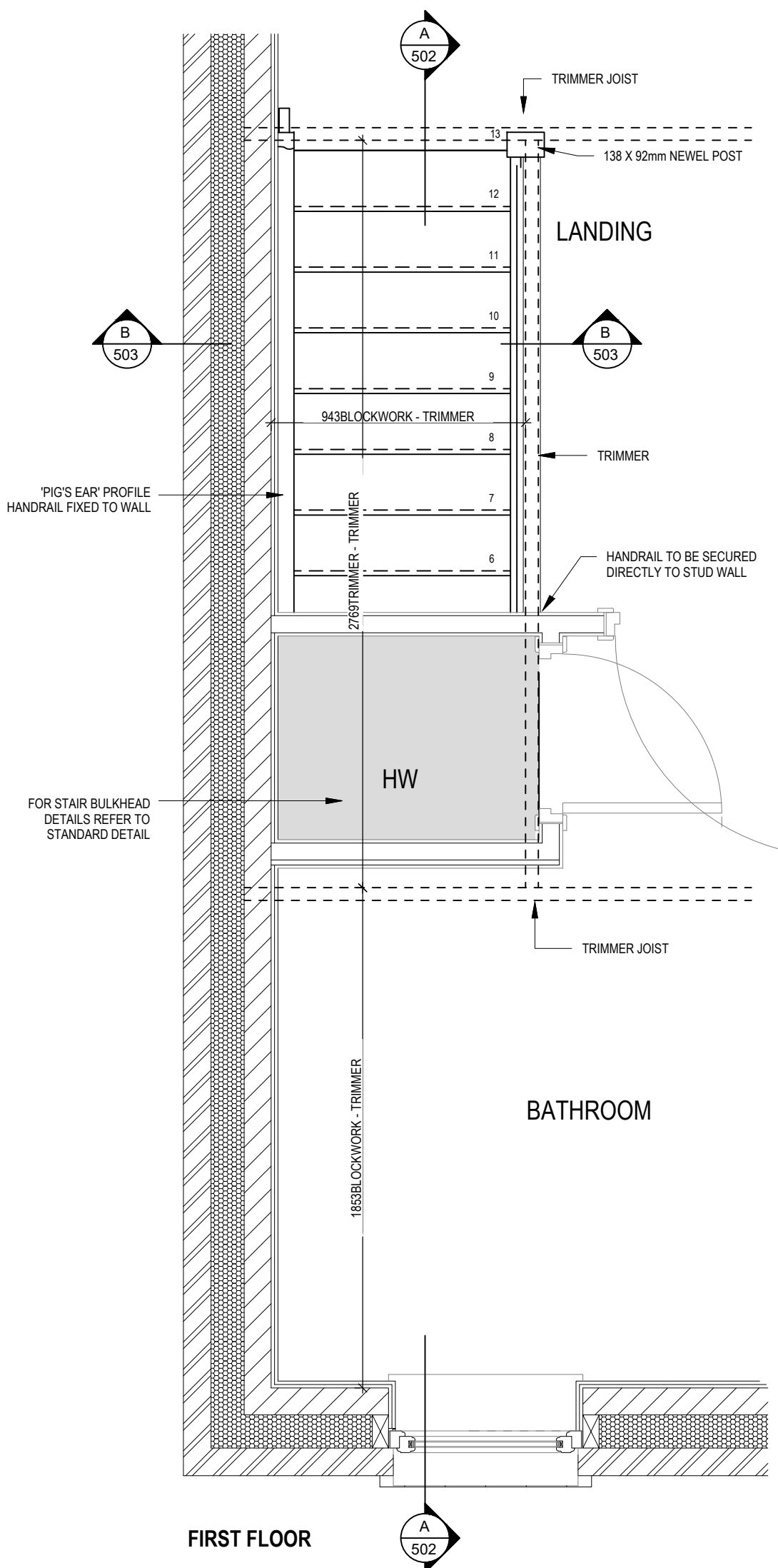
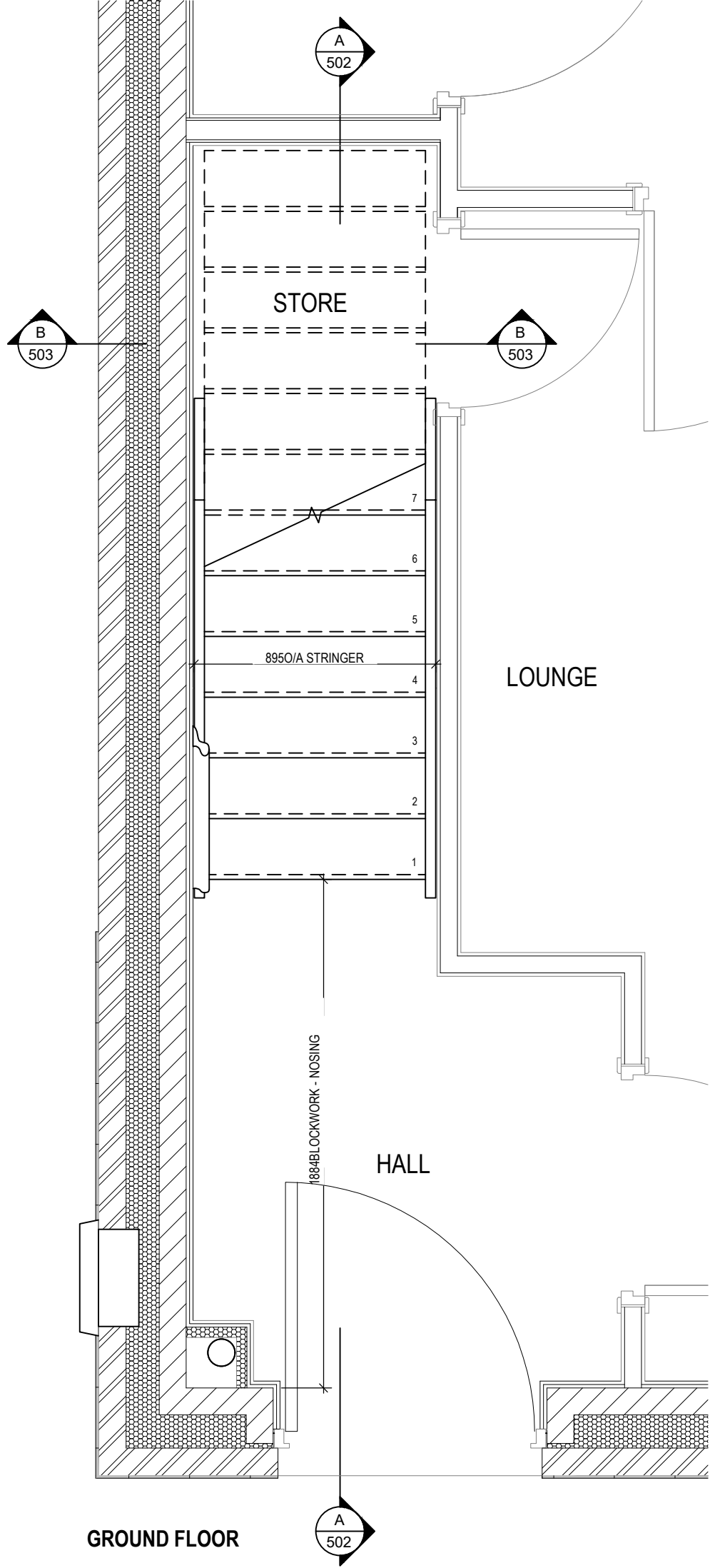
B	EV Charger moved to side.	05.03.25
A	Additional window openers for Part O.	06.02.24

Scale 1 : 100
DCC 2
Dwg No 404

Scale
1 : 100

Elevations A1

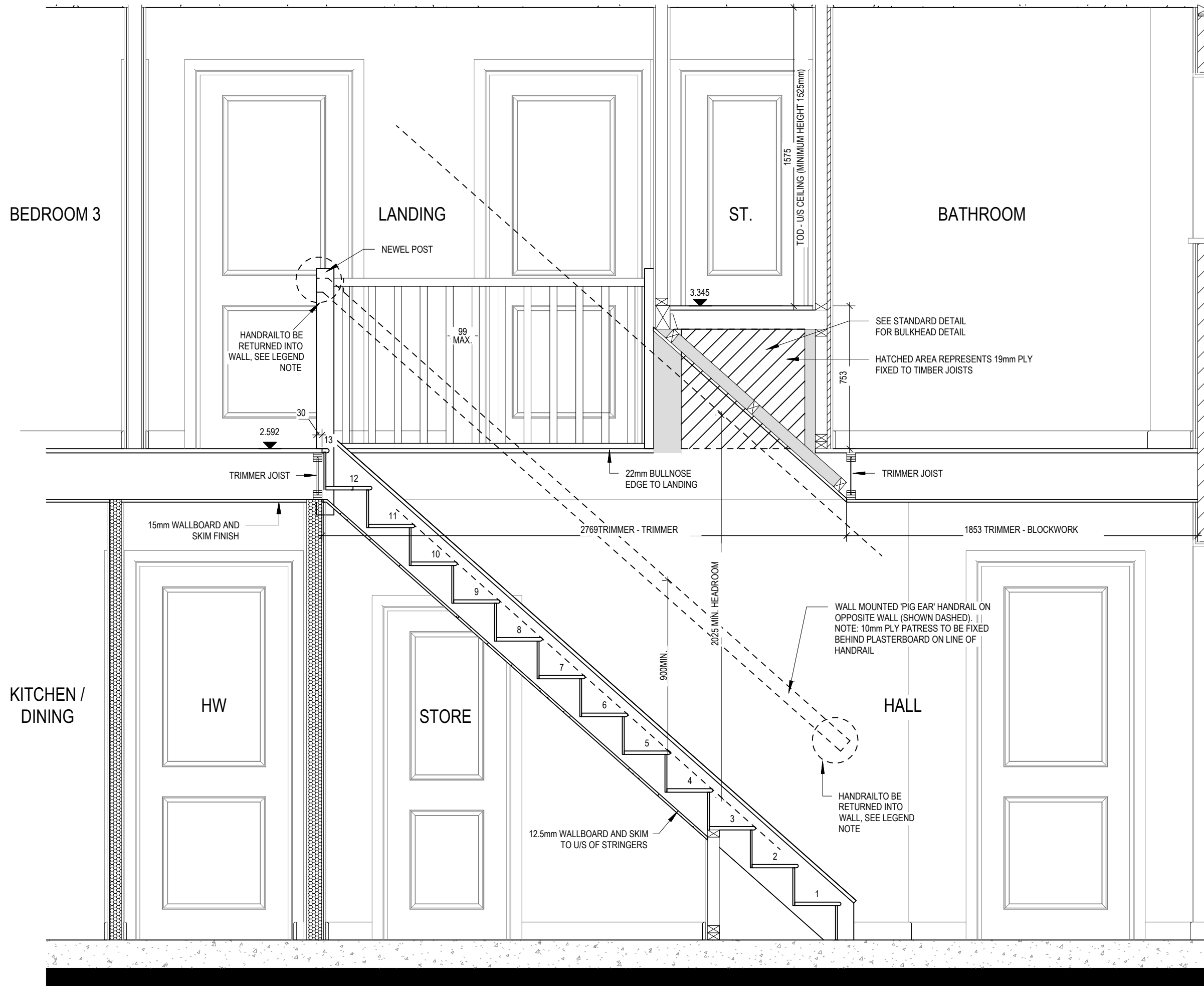
3B5P M4(2)



STAIRS SPECIFICATION	
FLOOR - FLOOR	= 2592mm
RISE	= 13No. @ 199.38mm (220mm Max)
GOING	= 225mm (220mm Min)
STRING - STRING	= SEE DWG
PITCH	= 41.55°
STRINGERS	= 32 x 250mm
NEWEL POSTS	= SEE DWG
HANDRAIL 900mm ABOVE NOSING LINE	
BALUSTRADE 900mm ABOVE LANDING FLOOR LEVEL	
VERTICAL BALUSTERS 99mm MAX CLEAR BETWEEN EACH	

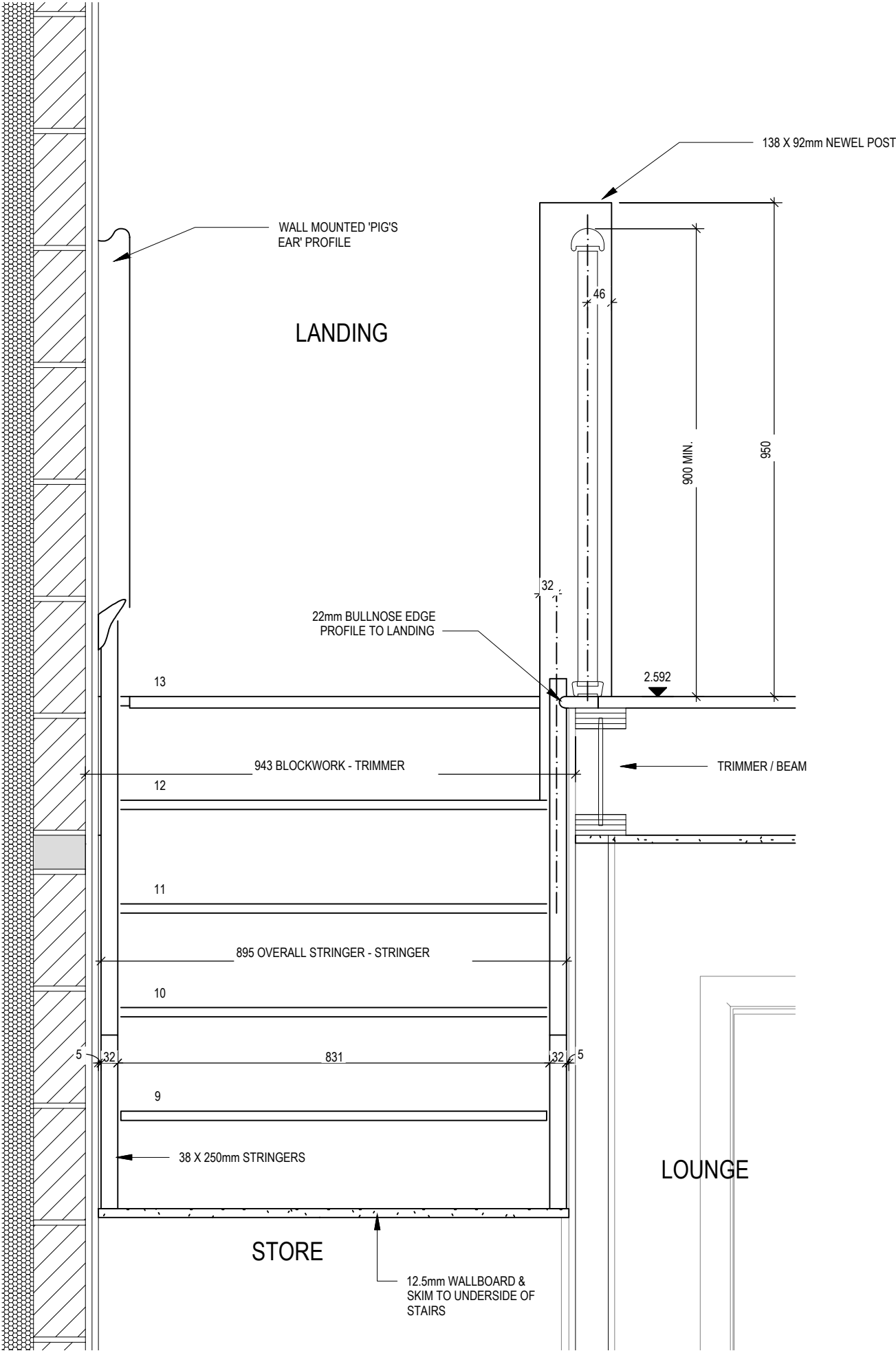
3B5P M4(2) End G SERIES	Staircase Details 1 of 3	Scale 1 : 20	DCC 2	Dwg No 501	Dwg Rev A	A		17.04.25
						Stairwell opening amended.		

This drawing must be read in conjunction with relevant Redrow specifications, standard details & structural calculations. All dimension are taken from face of Brick/Block & Studwork. This drawing is subject to copyright law. Do Not Scale Off This Drawing



3B5P M4(2) End G SERIES	Staircase Details 2 of 3			Dwg No 502		Dwg Rev A		17.04.25	
	Scale 1 : 20			DCC 2		Date Feb 2023		A	
	This drawing must be read in conjunction with relevant Redrow specifications, standard details & structural calculations. All dimensions are taken from face of Brick/Block & Studwork. This drawing is subject to copyright law. Do Not Scale Off This Drawing			Stairwell opening & bulkhead detail amended.					

SECTION B-B



3B5P M4(2)
End
G SERIES

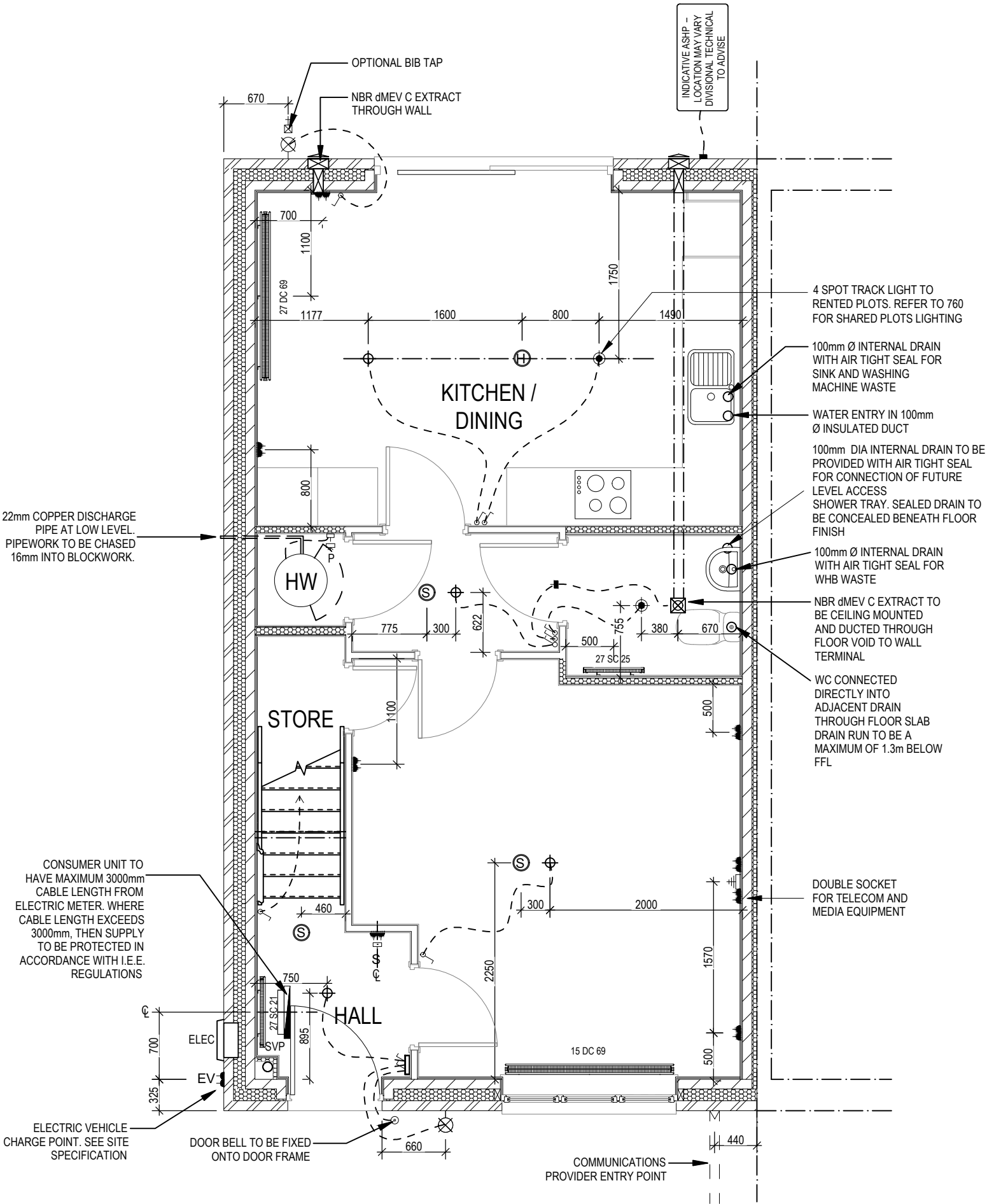
Staircase Details
3 of 3

Scale
1 : 10
Date
Feb 2023
DCC
2
Dwg No
503
Dwg Rev

ELECTRICAL LEGEND

- PENDANT TYPE LIGHT FITTING
- BATTEN HOLDER LIGHT FITTING (RENTED PLOTS)
- SINGLE S/W SOCKET OUTLET (LOW LEVEL)
- DOUBLE S/W SOCKET OUTLET (FILLED AT LOW LEVEL, CLEAR AT HIGH LEVEL)
- DOUBLE S/W SOCKET OUTLET WITH DOUBLE USB SOCKET (FILLED AT LOW LEVEL, CLEAR AT HIGH LEVEL)
- ELECTRIC VEHICLE CHARGE POINT (SEE SITE SPECIFICATION)
- EXTERNAL POWER SUPPLY (OPTIONAL)
- FUSED OUTLET (IMMERSSION)
- ISOLATOR SWITCH
- SINGLE SWITCH, DOUBLE SWITCH, TRIPLE SWITCH
- NOTE: WHERE MULTIPLE SWITCHES ARE INDICATED TOGETHER THESE ARE TO BE SWITCHED ON ONE SINGLE PLATE NOT ON MULTIPLE PLATES.
- COMBINED T.V., SATELLITE AND DATA POINT WITH OPTIONAL HIGH LEVEL MOUNT
- T.V. POINT WITH OPTIONAL DATA POINT AND OPTIONAL HIGH LEVEL MOUNT
- OPTIONAL T.V. POINT WITH OPTIONAL DATA POINT AND OPTIONAL HIGH LEVEL MOUNT
- DATA POINT
- SMOKE DETECTOR
- HEAT DETECTOR
- SHAVER SOCKET
- ROOM THERMOSTAT
- INDIVIDUAL ZONE THERMOSTAT
- PROGRAMMER AND HOT WATER TIMER
- PROGRAMMABLE THERMOSTAT
- EXTERNAL WALL LIGHT FITTING WITH INTEGRAL DUSK TO DAWN SENSOR
- EXTERNAL SURFACE MOUNTED BULKHEAD LIGHT FITTING TO CANOPY
- DOOR BELL PUSH BUTTON IN FRAME
- PV METER SWITCH (SITE UPGRADE/CUSTOMER OPTION)
- SEMI RECESSED CONSUMER UNIT
- DUSK TO DAWN SENSOR
- COMMS ENTRY POINT WITH SLOW RADIUS BEND
- COMBINATION WALL MOUNTED ELECTRICAL DEVICES (REFER TO STD DETAIL), CONSISTING:

- DOOR BELL CHIME
- ALARM KEYPAD (CUSTOMER OPTION)
- TRIPLE LIGHT SWITCH
- BANK OF SWITCHES
- PASSIVE INFRA-RED DETECTOR TO BE FITTED 2.4m MAX ABOVE FFL (CUSTOMER OPTION)
- DOOR CONTACT (CUSTOMER OPTION)



3B5P M4(2)
End
G SERIES

Services Layout
Ground Floor

Dwg No
2
601

DCC

Scale
1 : 50

Date
Feb 2023

Dwg Rev
B

B

EV Charger moved to side.

05.03.25

A

System 3 extracts indicated. Cloaks layout & rads amended to suit Group update to Dart.

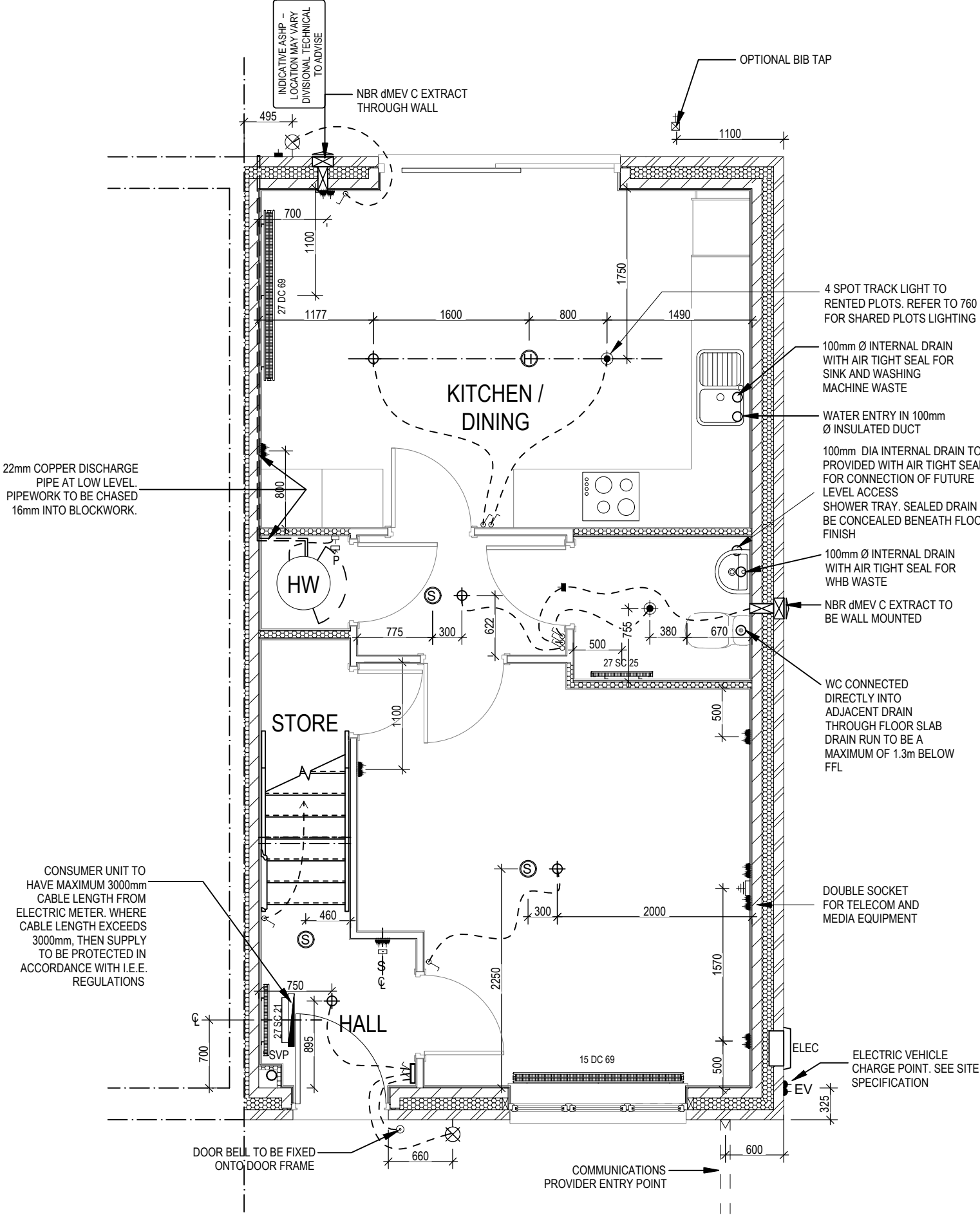
05.04.24

This drawing must be read in conjunction with relevant Redrow specifications, standard details & structural calculations. All dimension are taken from face of Brick/Block & Studwork. This drawing is subject to copyright law. Do Not Scale Off This Drawing

ELECTRICAL LEGEND

- PENDANT TYPE LIGHT FITTING
- BATTEN HOLDER LIGHT FITTING (RENTED PLOTS)
- SINGLE S/W SOCKET OUTLET (LOW LEVEL)
- DOUBLE S/W SOCKET OUTLET (FILLED AT LOW LEVEL, CLEAR AT HIGH LEVEL)
- DOUBLE S/W SOCKET OUTLET WITH DOUBLE USB SOCKET (FILLED AT LOW LEVEL, CLEAR AT HIGH LEVEL)
- ELECTRIC VEHICLE CHARGE POINT (SEE SITE SPECIFICATION)
- EXTERNAL POWER SUPPLY (OPTIONAL)
- FUSED OUTLET (IMMERSION)
- ISOLATOR SWITCH
- SINGLE SWITCH, DOUBLE SWITCH, TRIPLE SWITCH
- NOTE: WHERE MULTIPLE SWITCHES ARE INDICATED TOGETHER THESE ARE TO BE SWITCHED ON ONE SINGLE PLATE NOT ON MULTIPLE PLATES.
- COMBINED T.V., SATELLITE AND DATA POINT WITH OPTIONAL HIGH LEVEL MOUNT
- T.V. POINT WITH OPTIONAL DATA POINT AND OPTIONAL HIGH LEVEL MOUNT
- OPTIONAL T.V. POINT WITH OPTIONAL DATA POINT AND OPTIONAL HIGH LEVEL MOUNT
- DATA POINT
- SMOKE DETECTOR
- HEAT DETECTOR
- SHAVER SOCKET
- ROOM THERMOSTAT
- INDIVIDUAL ZONE THERMOSTAT
- PROGRAMMER AND HOT WATER TIMER
- PROGRAMMABLE THERMOSTAT
- EXTERNAL WALL LIGHT FITTING WITH INTEGRAL DUSK TO DAWN SENSOR
- EXTERNAL SURFACE MOUNTED BULKHEAD LIGHT FITTING TO CANOPY
- DOOR BELL PUSH BUTTON IN FRAME
- PV METER SWITCH (SITE UPGRADE/CUSTOMER OPTION)
- SEMI RECESSED CONSUMER UNIT
- DUSK TO DAWN SENSOR
- COMMS ENTRY POINT WITH SLOW RADIUS BEND
- COMBINATION WALL MOUNTED ELECTRICAL DEVICES (REFER TO STD DETAIL), CONSISTING:

- DOOR BELL CHIME
- ALARM KEYPAD (CUSTOMER OPTION)
- TRIPLE LIGHT SWITCH
- BANK OF SWITCHES
- PASSIVE INFRA-RED DETECTOR TO BE FITTED 2.4m MAX ABOVE FFL (CUSTOMER OPTION)
- DOOR CONTACT (CUSTOMER OPTION)



3B5P M4(2)
End - V2
G SERIES

Services Layout
Ground Floor

Dwg No
DCC
Scale
1 : 50
Date
Feb 2023

Dwg Rev
B

05.03.25
05.04.24

B
A

EV Charger moved to side.
System 3 extracts indicated. Cloaks layout & radii amended to suit Group update to Dart.

This drawing must be read in conjunction with relevant Redrow specifications, standard details & structural calculations. All dimension are taken from face of Brick/Block & Studwork. This drawing is subject to copyright law. Do Not Scale Off This Drawing

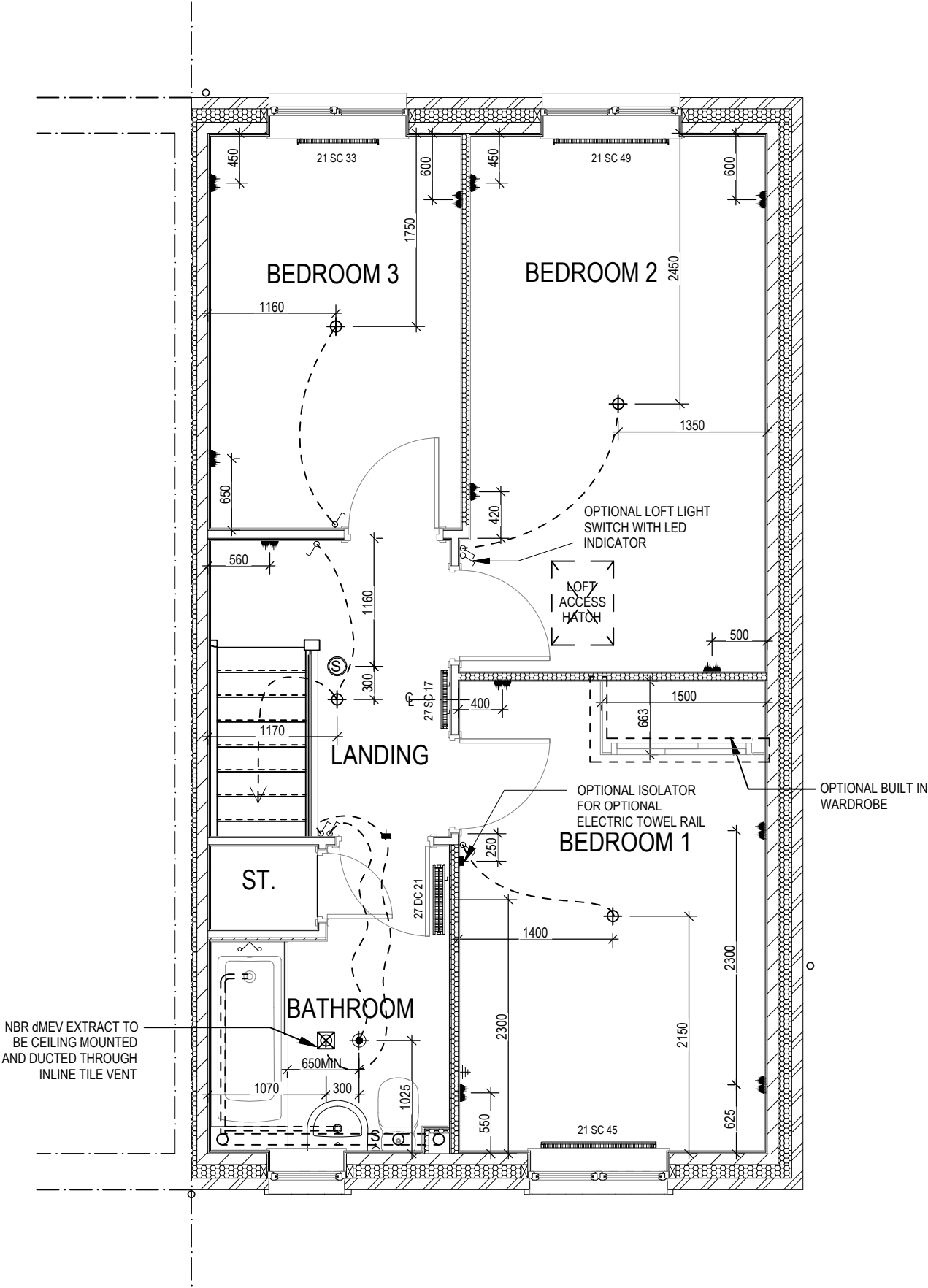
ELECTRICAL LEGEND

- PENDANT TYPE LIGHT FITTING
- BATTEN HOLDER LIGHT FITTING (RENTED PLOTS)
- SINGLE S/W SOCKET OUTLET (LOW LEVEL)
- DOUBLE S/W SOCKET OUTLET (FILLED AT LOW LEVEL, CLEAR AT HIGH LEVEL)
- USB

DOUBLE S/W SOCKET OUTLET WITH DOUBLE USB SOCKET (FILLED AT LOW LEVEL, CLEAR AT HIGH LEVEL)
- EV

ELECTRIC VEHICLE CHARGE POINT (SEE SITE SPECIFICATION)
- EXT

EXTERNAL POWER SUPPLY (OPTIONAL)
- FUSED OUTLET (IMMERSION)
- ISOLATOR SWITCH
- SINGLE SWITCH, DOUBLE SWITCH, TRIPLE SWITCH
- NOTE: WHERE MULTIPLE SWITCHES ARE INDICATED TOGETHER THESE ARE TO BE SWITCHED ON ONE SINGLE PLATE NOT ON MULTIPLE PLATES.
- COMBINED T.V., SATELLITE AND DATA POINT WITH OPTIONAL HIGH LEVEL MOUNT
- T.V. POINT WITH OPTIONAL DATA POINT AND OPTIONAL HIGH LEVEL MOUNT
- OPTIONAL T.V. POINT WITH OPTIONAL DATA POINT AND OPTIONAL HIGH LEVEL MOUNT
- DATA POINT
- SMOKE DETECTOR
- HEAT DETECTOR
- SHAVER SOCKET
- ROOM THERMOSTAT
- INDIVIDUAL ZONE THERMOSTAT
- PROGRAMMER AND HOT WATER TIMER
- PROGRAMMABLE THERMOSTAT
- EXTERNAL WALL LIGHT FITTING WITH INTEGRAL DUSK TO DAWN SENSOR
- EXTERNAL SURFACE MOUNTED BULKHEAD LIGHT FITTING TO CANOPY
- DOOR BELL PUSH BUTTON IN FRAME
- PV METER SWITCH (SITE UPGRADE/CUSTOMER OPTION)
- SEMI RECESSED CONSUMER UNIT
- DUSK TO DAWN SENSOR
- COMMS ENTRY POINT WITH SLOW RADIUS BEND
- COMBINATION WALL MOUNTED ELECTRICAL DEVICES (REFER TO STD DETAIL), CONSISTING:
- DOOR BELL CHIME
- ALARM KEYPAD (CUSTOMER OPTION)
- TRIPLE LIGHT SWITCH
- BANK OF SWITCHES
- PASSIVE INFRA-RED DETECTOR TO BE FITTED 2.4m MAX ABOVE FFL (CUSTOMER OPTION)
- DOOR CONTACT (CUSTOMER OPTION)



3B5P M4(2)

End - V2

G SERIES

Services Layout
First Floor

Scale

DCC

Dwg No

1 : 50

2

604

Date

Feb 2023

Dwg Rev

B

B

2No. DSSO added to Bed 2. 1No. DSSO added to Bed 1 & 3.

20.02.25

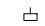



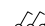
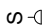
A

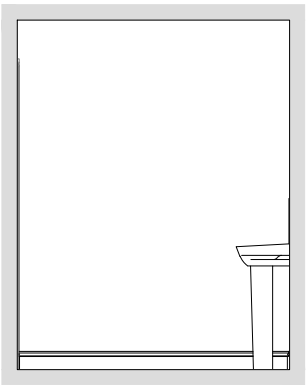
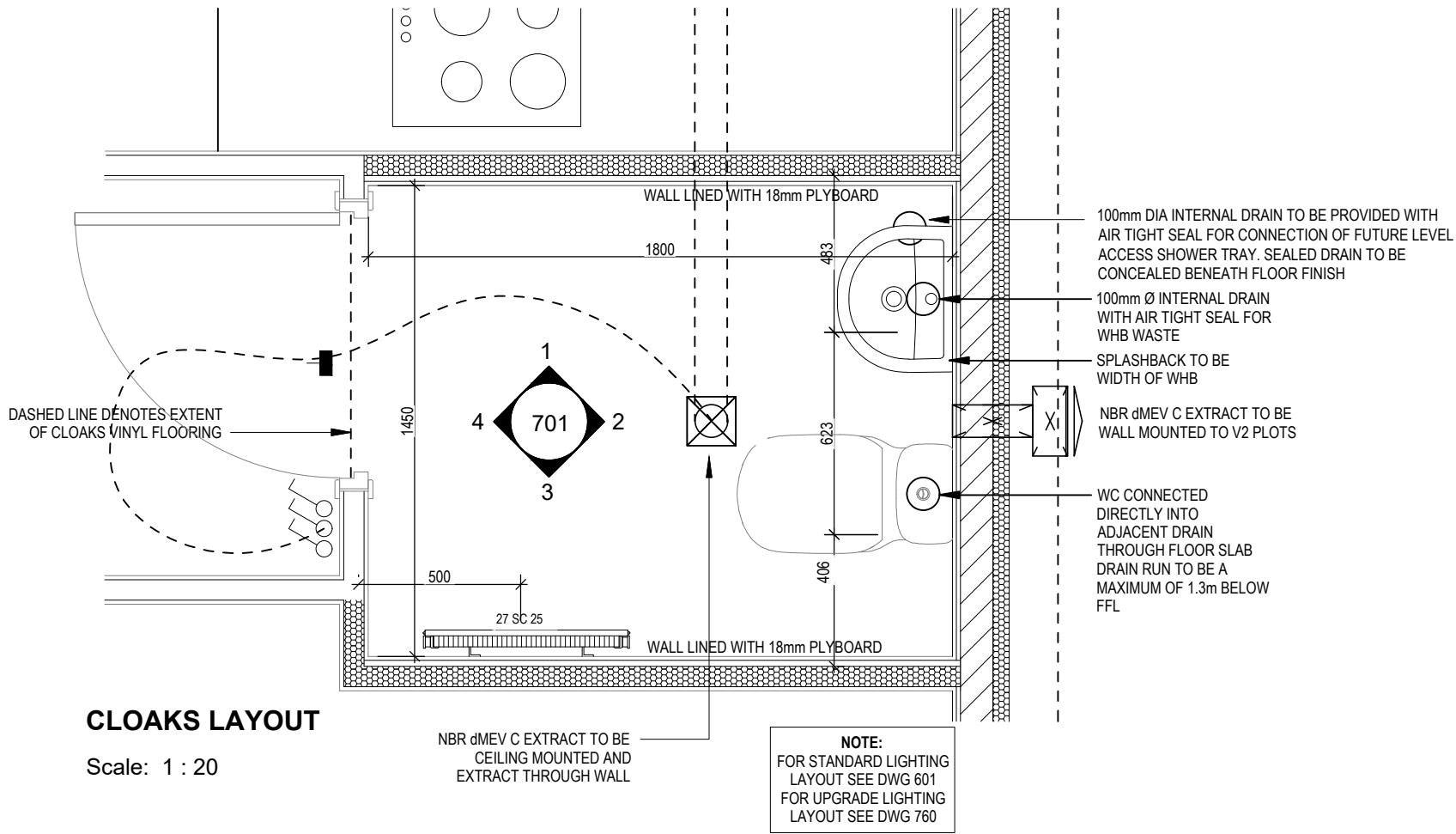
System 3 dMEV extracts indicated. Rads amended to suit Group updates to Dart.

05.04.24

This drawing must be read in conjunction with relevant Redrow specifications, standard details & structural calculations. All dimension are taken from face of Brick/Block & Studwork. This drawing is subject to copyright law. Do Not Scale Off This Drawing

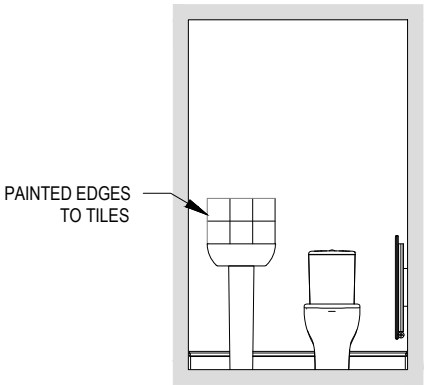
ELECTRICAL LEGEND

-  FUSED OUTLET (BOILER, IMMERSION)
-  ISOLATOR SWITCH
-  SINGLE SWITCH
-  DOUBLE SWITCH
-  TRIPLE SWITCH
- NOTE: WHERE MULTIPLE SWITCHES ARE INDICATED TOGETHER THESE ARE TO BE SWITCHED ON ONE SINGLE PLATE NOT ON MULTIPLE PLATES.
-  SHAVER SOCKET

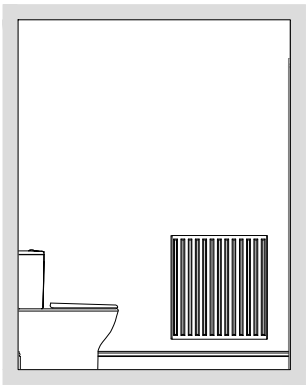


CLOAKS VIEW 1

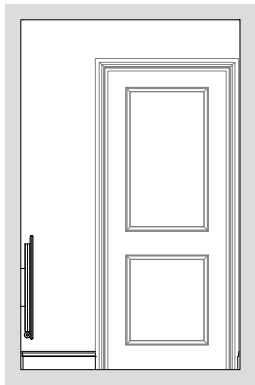
Scale: 1 : 50



CLOAKS VIEW 2



CLOAKS VIEW 3



CLOAKS VIEW 4

3B5P M4(2)

End
G SERIES

Cloaks Details

Scale
AS
indicated
Date
Feb 2023

DCC
2



Dwg No
701


Dwg Rev
A



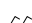

A System 3 dMEV extracts indicated. Layout amended to suit Group updates to Dart.


05.04.24

ELECTRICAL LEGEND

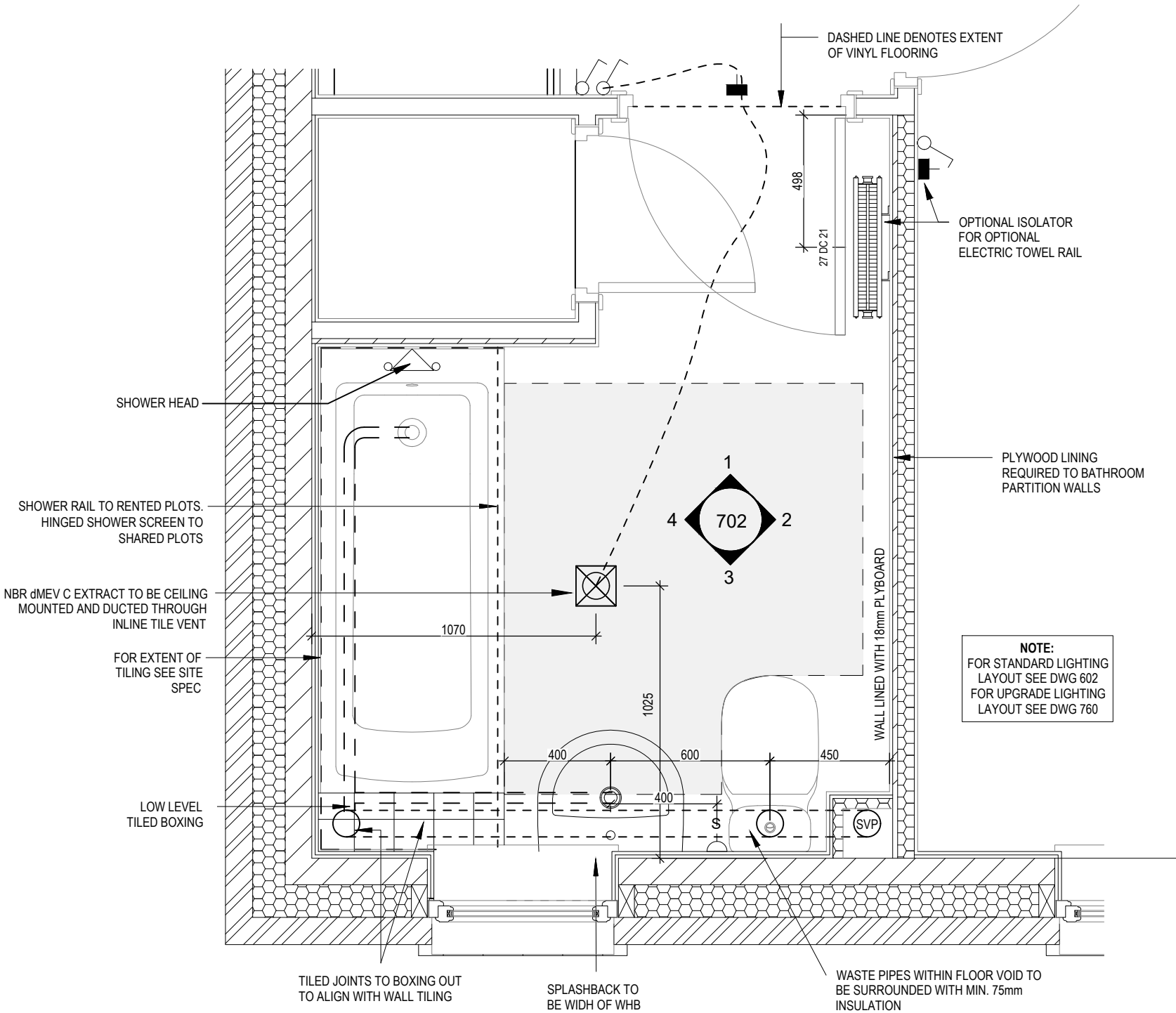
-  FUSED OUTLET (IMMERSION)
-  ISOLATOR SWITCH
- UFH



OPTIONAL ELECTRIC UNDER FLOOR HEATING WITH CONTROLLER AND STAT
-  SINGLE SWITCH
-  DOUBLE SWITCH
-  TRIPLE SWITCH
- NOTE: WHERE MULTIPLE SWITCHES ARE INDICATED TOGETHER THESE ARE TO BE SWITCHED ON ONE SINGLE PLATE NOT ON MULTIPLE PLATES.
-  S-D

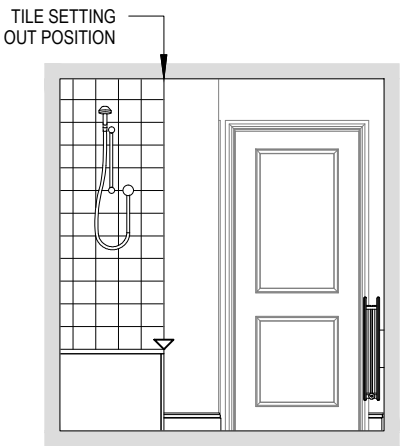
SHAVER SOCKET
-  Di

OPTIONAL DIGITAL SHOWER SWITCH

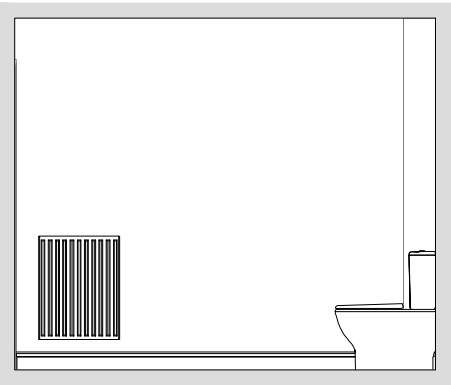


BATHROOM LAYOUT

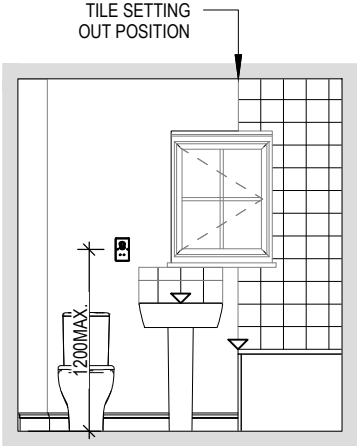
Scale: 1 : 20



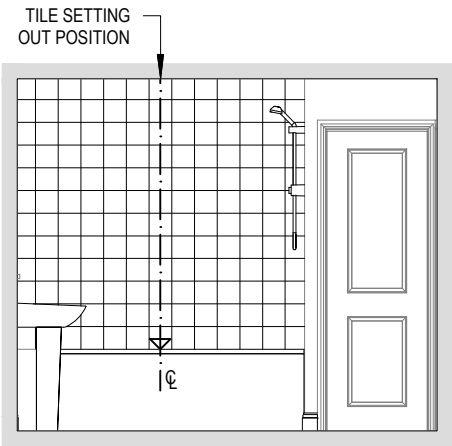
BATHROOM VIEW 1



BATHROOM VIEW 2



BATHROOM VIEW 3



BATHROOM VIEW 4

Scale: 1 : 50

3B5P M4(2)	Bathroom Details	DCC 2	Dwg No 702	Dwg Rev A	System 3 dMEV extract indicated.	A	05.04.24
End G SERIES		Scale	AS	Indicated Date	Feb 2023		

ELECTRICAL LEGEND

- △

PELMET LIGHT FITTING
- ⏏

FUSED OUTLET (IMMERSION)
- ISOLATOR SWITCH
- ⏏

SINGLE SWITCH
- ⏏

DOUBLE SWITCH
- ⏏

TRIPLE SWITCH
- NOTE: WHERE MULTIPLE SWITCHES ARE INDICATED TOGETHER THESE ARE TO BE SWITCHED ON ONE SINGLE PLATE NOT ON MULTIPLE PLATES.
- ⏏

BANK OF SWITCHES TO ISOLATE HOB, EXTRACTOR HOOD, WASHING MACHINE, DISHWASHER, TUMBLE DRYER, FRIDGE/FREEZER, MICROWAVE OVEN, OPTIONAL WATER HEATER WITH NEON INDICATOR, ALL IN ACCORDANCE WITH THE APPLIANCE/SPACE PROVIDED ON LAYOUT.
- ⏏

UNSWITCHED SOCKET / FUSED SPUR, TO BE CEILING MOUNTED, SEE STANDARD DETAILS
- ⏏

SINGLE UNSWITCHED SOCKET (HIGH LEVEL)
- ⏏

SINGLE UNSWITCHED SOCKET (LOW LEVEL)
- SINGLE UNSWITCHED FUSED SPUR (LOW LEVEL)
- ⏏

DOUBLE S/W SOCKET OUTLET (HIGH LEVEL)
- ⏏

DOUBLE S/W SOCKET OUTLET (LOW LEVEL)
- ⏏

HEAT DETECTOR TO BS EN 14604: 2005, TO BE PERMANENTLY WIRED TO A SEPARATELY FUSED CIRCUIT AT THE DISTRIBUTION BOARD. WHERE MORE THAN ONE ARE INSTALLED THEY WILL BE INTER-CONNECTED. WIRING SHALL CONFORM TO IEE WIRING REGULATIONS. HEAT DETECTOR TO HAVE BATTERY BACKUP AND TO BE LOCATED A MIN. OF 300mm AWAY FROM ANY WALL AND LIGHT FITTING.
- USB

⏏

DOUBLE S/W SOCKET OUTLET WITH USB (HIGH LEVEL)
- ⏏

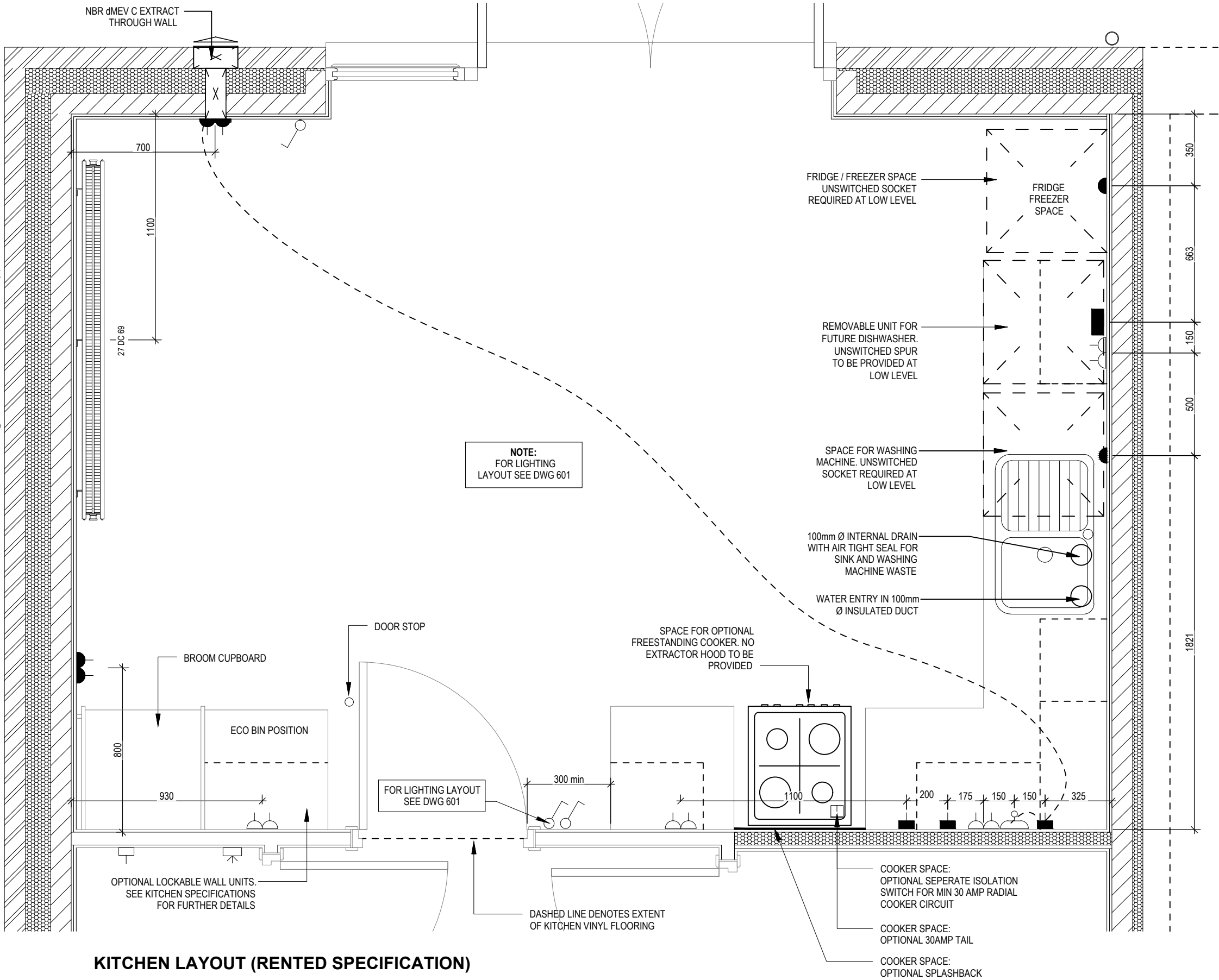
COOKER CONNECTION UNIT
- P

⏏

2 ZONE PROGRAMMER & HOT WATER TIMER
- PT

⏏

PROGRAMMABLE THERMOSTAT



KITCHEN LAYOUT (RENTED SPECIFICATION)

3B5P M4(2)

Kitchen Layout
(Rented Specification)

Dwg No

750

DCC

2

Scale

1:20

Date

Feb 2023

Dwg Rev

C

C Fridge freezer location amended. Door stop indicated.

B Removable unit for future dishwasher indicated. Broom cupboard moved.

A System 3 dMEV extract indicated. Rad amended to suit Group updates to Dart.

05.06.25

07.03.25

05.04.24

ELECTRICAL LEGEND

- △

PELMET LIGHT FITTING
- ⎓

FUSED OUTLET (IMMERSION)
- ISOLATOR SWITCH
- ⌚

SINGLE SWITCH
- ⌚⌚

DOUBLE SWITCH
- ⌚⌚⌚

TRIPLE SWITCH
- NOTE: WHERE MULTIPLE SWITCHES ARE INDICATED TOGETHER THESE ARE TO BE SWITCHED ON ONE SINGLE PLATE NOT ON MULTIPLE PLATES.
- ⌚⌚⌚

BANK OF SWITCHES TO ISOLATE HOB, EXTRACTOR HOOD, WASHING MACHINE, DISHWASHER, TUMBLE DRYER, FRIDGE/FREEZER, MICROWAVE OVEN, OPTIONAL WATER HEATER WITH NEON INDICATOR, ALL IN ACCORDANCE WITH THE APPLIANCE/SPACE PROVIDED ON LAYOUT.
- ⊠

UNSWITCHED SOCKET / FUSED SPUR, TO BE CEILING MOUNTED, SEE STANDARD DETAILS
- ⌚

SINGLE UNSWITCHED SOCKET (HIGH LEVEL)
- SINGLE UNSWITCHED SOCKET (LOW LEVEL)
- SINGLE UNSWITCHED FUSED SPUR (LOW LEVEL)
- ⌚⌚

DOUBLE S/W SOCKET OUTLET (HIGH LEVEL)
- DOUBLE S/W SOCKET OUTLET (LOW LEVEL)
- Ⓜ

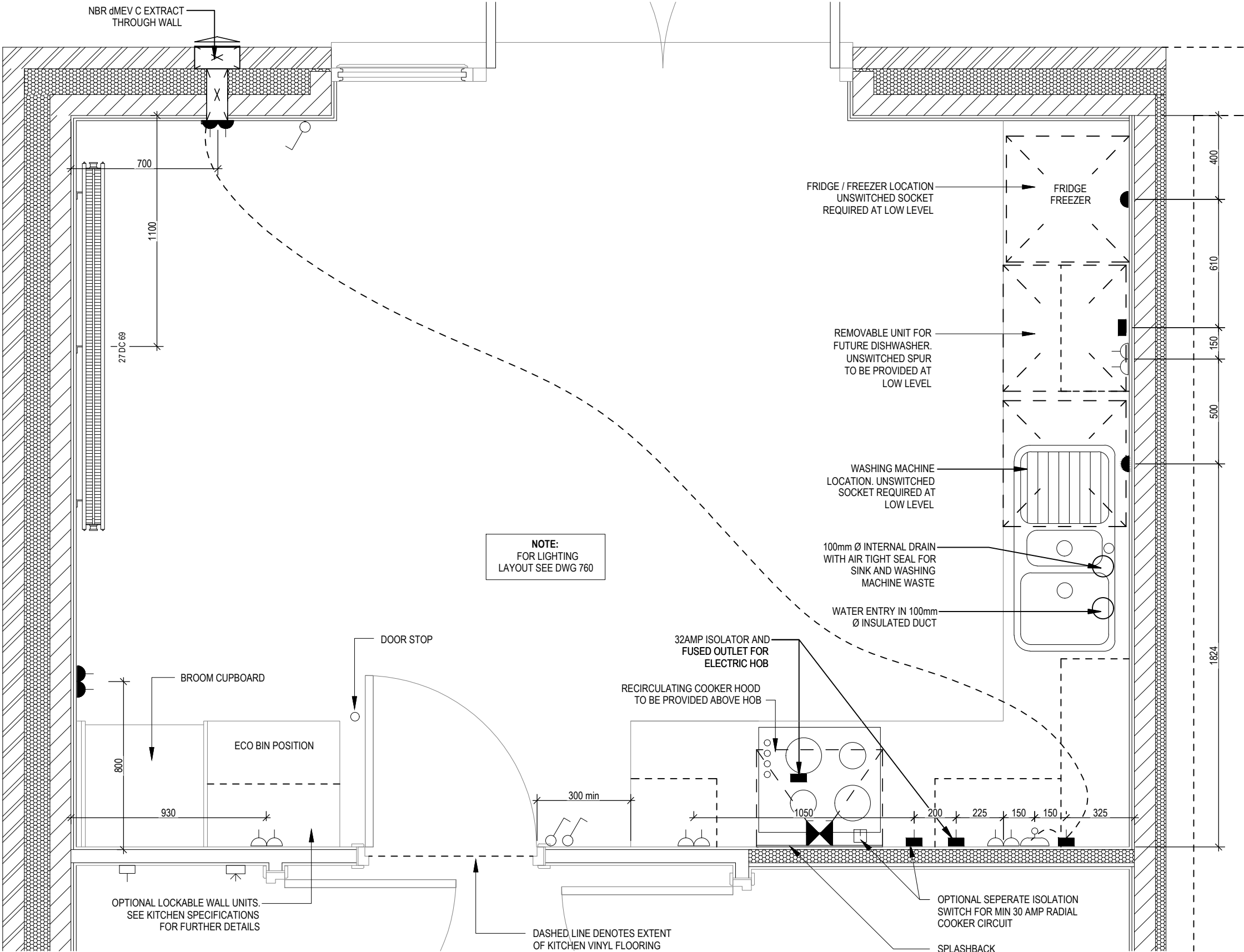
HEAT DETECTOR TO BS EN 14604: 2005, TO BE PERMANENTLY WIRED TO A SEPARATELY FUSED CIRCUIT AT THE DISTRIBUTION BOARD. WHERE MORE THAN ONE ARE INSTALLED THEY WILL BE INTER-CONNECTED. WIRING SHALL CONFORM TO IEE WIRING REGULATIONS.
HEAT DETECTOR TO HAVE BATTERY BACKUP AND TO BE LOCATED A MIN. OF 300mm AWAY FROM ANY WALL AND LIGHT FITTING.
- USB

DOUBLE S/W SOCKET OUTLET WITH USB (HIGH LEVEL)
- ⌚

COOKER CONNECTION UNIT
- P ⌚

2 ZONE PROGRAMMER & HOT WATER TIMER
- PT ⌚

PROGRAMMABLE THERMOSTAT



KITCHEN LAYOUT (SHARED SPECIFICATION)

3B5P M4(2)

End
G SERIES

Kitchen Layout (Shared Ownership Specification)

Dwg No
751

DCC
2

Scale
1:20

Date
Feb 2023

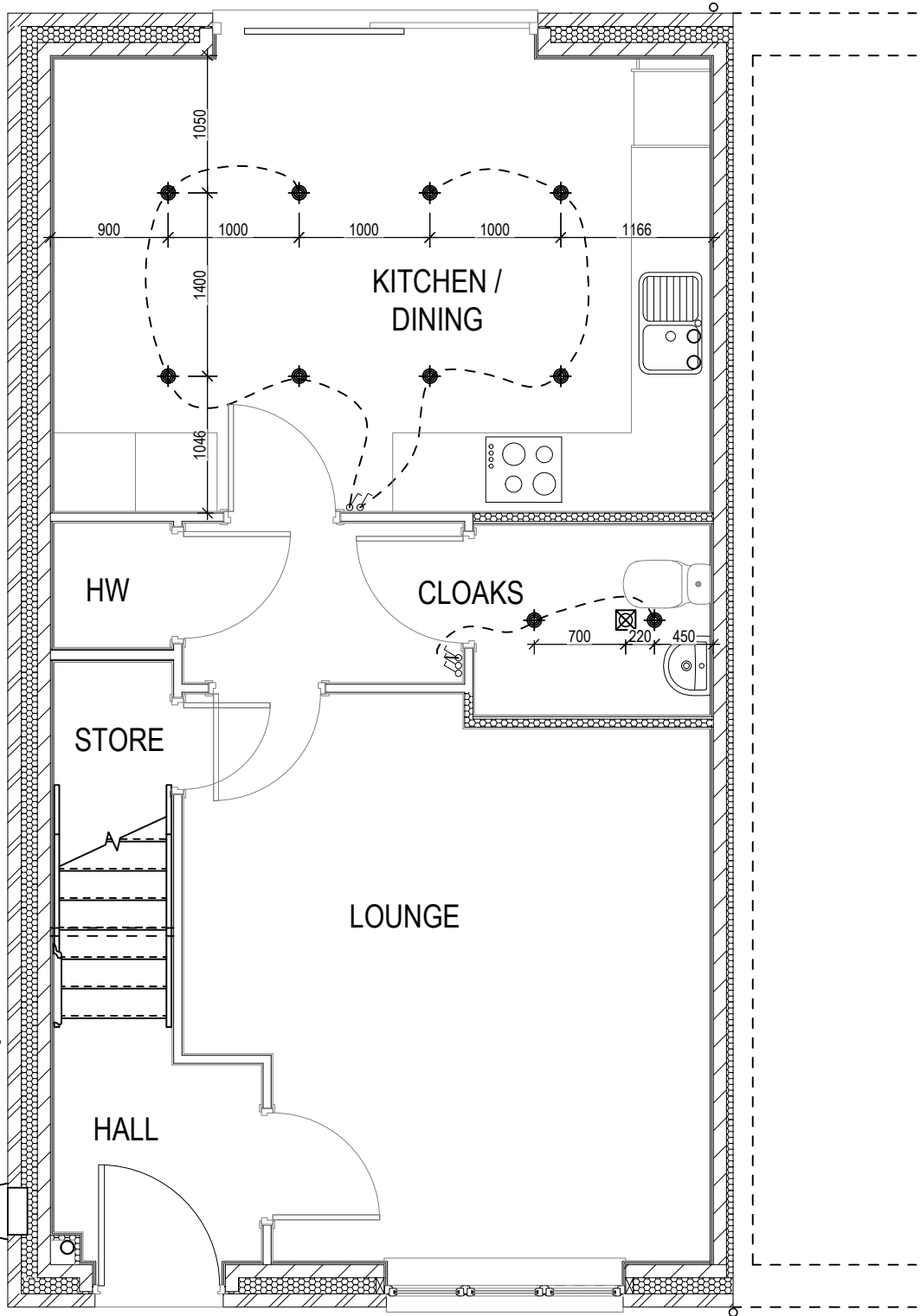
Dwg Rev
D

05.08.25	D	Fridge freezer location amended. Door stop indicated.
07.03.25	C	Removable unit for future dishwasher indicated. Broom cupboard moved.
27.11.24	B	Sink amended to 1.5 bowl.
05.04.24	A	System 3 dMEV extract indicated. Rad amended to suit Group updates to Dart.

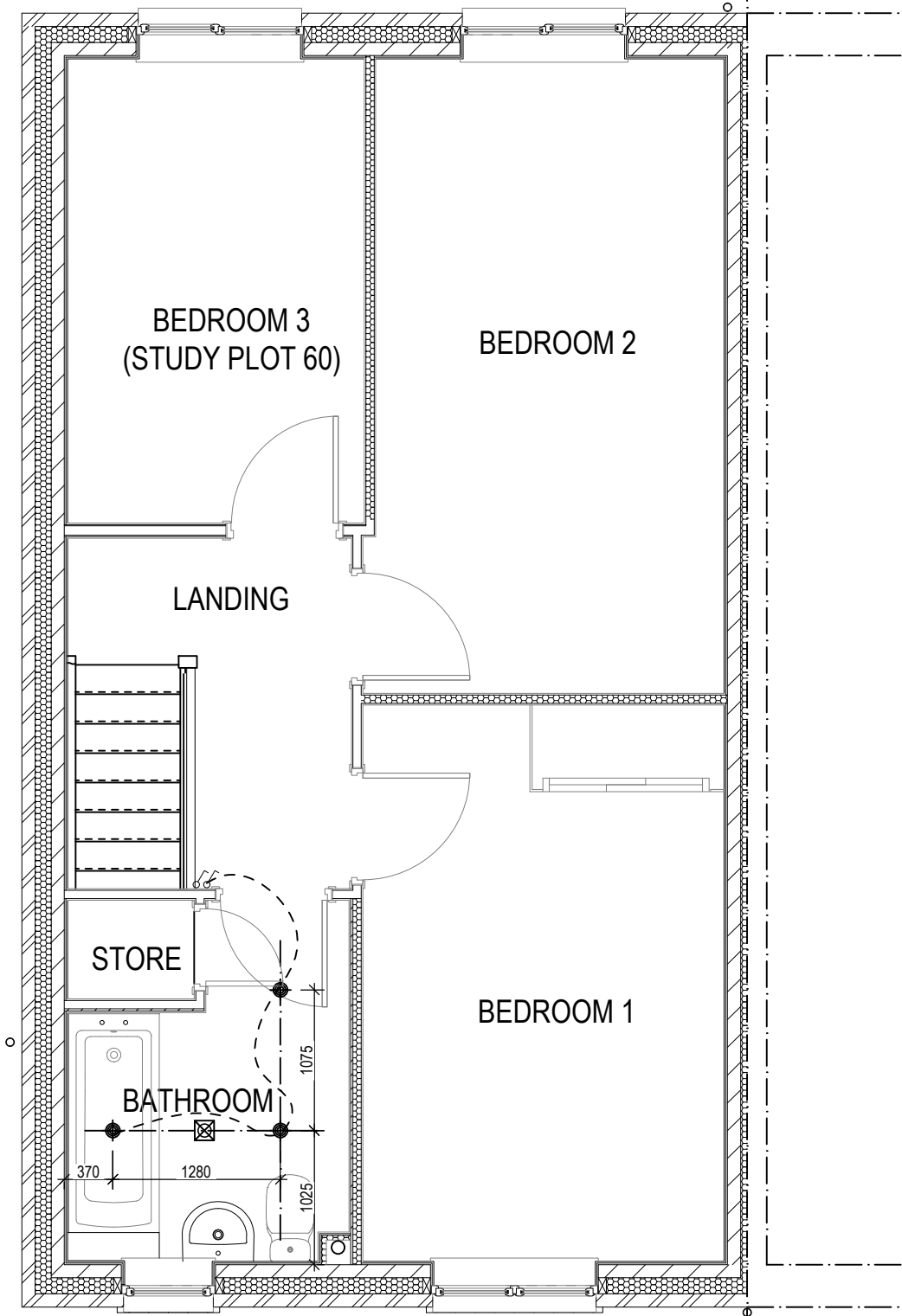
ELECTRICAL LEGEND

- OPTIONAL LOW VOLTAGE DOWNLIGHTER FITTING
- OPTIONAL PENDANT TYPE LIGHT FITTING
- INTERMITTENT MEV CEILING MOUNTED
- SINGLE SWITCH
- DOUBLE SWITCH
- TRIPLE SWITCH

NOTE: WHERE MULTIPLE SWITCHES ARE INDICATED TOGETHER THESE ARE TO BE SWITCHED ON ONE SINGLE PLATE NOT ON MULTIPLE PLATES.



GROUND FLOOR







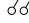

FIRST FLOOR

3B5P M4(2)
End
G SERIES

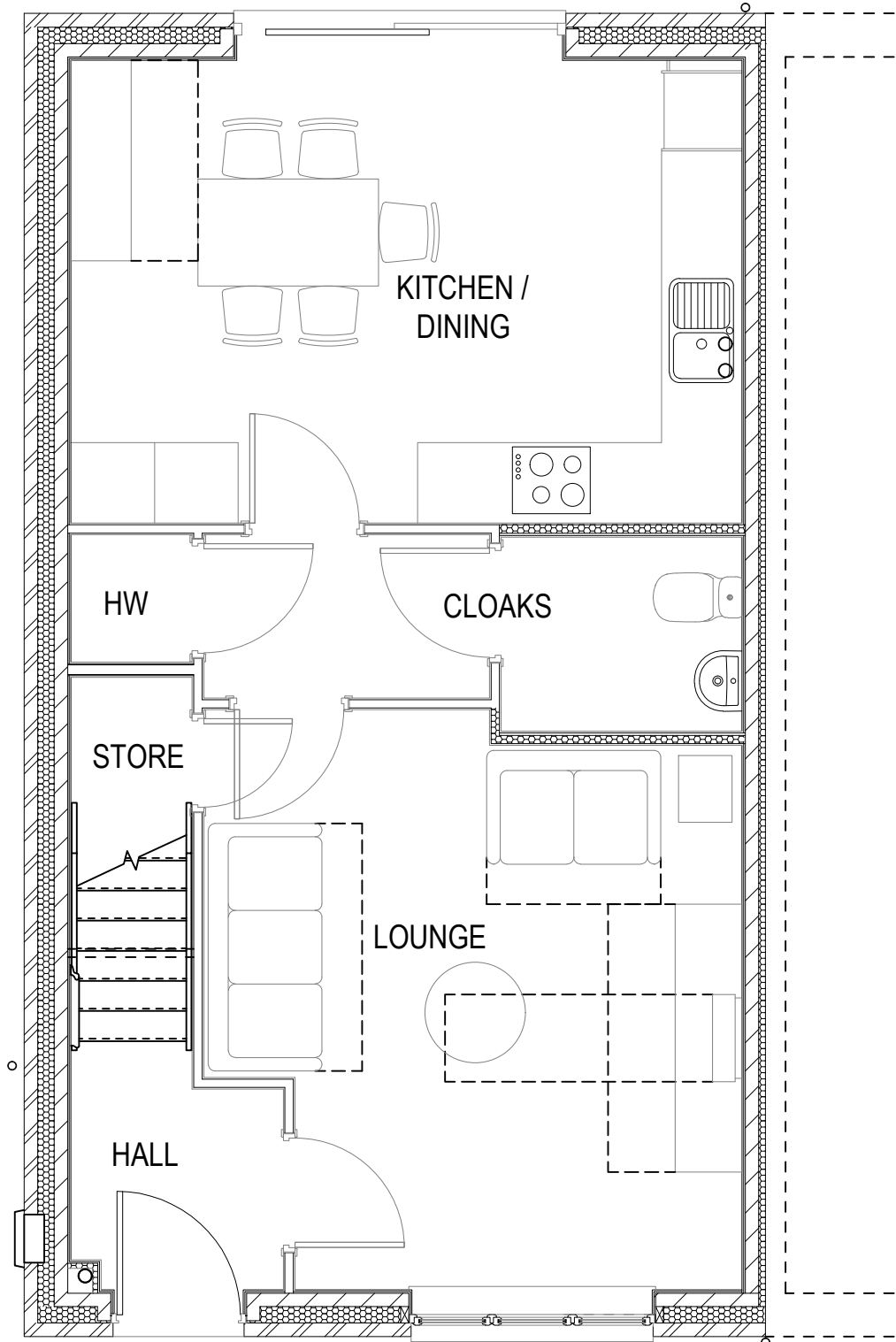
Optional Lighting Layout
Ground & First Floor
Shared Ownership Plots

Scale
1 : 50
Date
Feb 2023
DCC
2
Dwg No
760
Dwg Rev

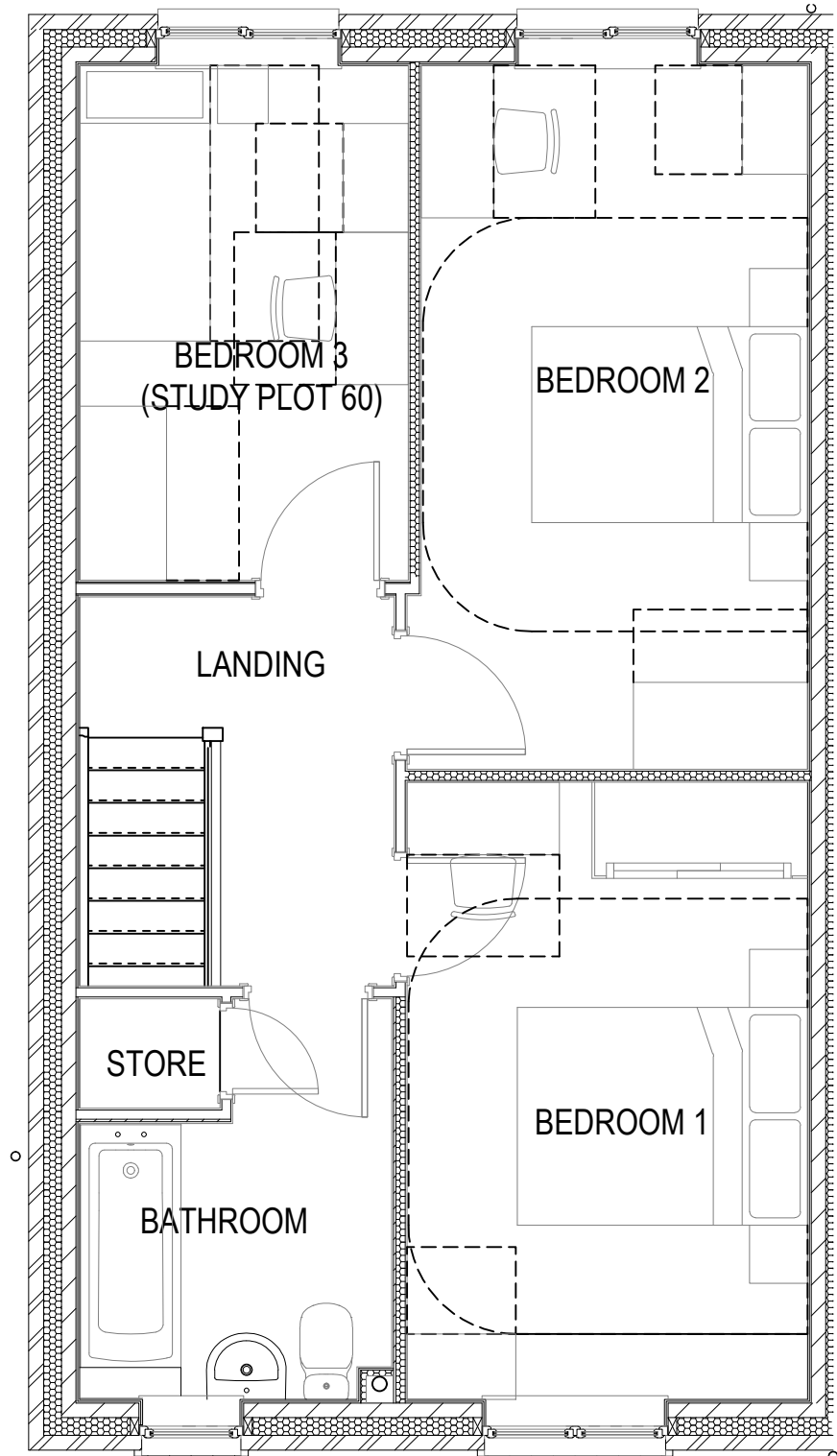
ELECTRICAL LEGEND

-  OPTIONAL LOW VOLTAGE DOWNLIGHTER FITTING
-  OPTIONAL PENDANT TYPE LIGHT FITTING
-  INTERMITTENT MEV CEILING MOUNTED
-  SINGLE SWITCH
-  DOUBLE SWITCH
-  TRIPLE SWITCH

NOTE: WHERE MULTIPLE SWITCHES ARE INDICATED TOGETHER THESE ARE TO BE SWITCHED ON ONE SINGLE PLATE NOT ON MULTIPLE PLATES.



GROUND FLOOR



FIRST FLOOR

<div>3B5P M4(2)</div> <div>End</div> <div>G SERIES</div>	Furniture Layouts	Scale	DCC	Dwg No
		1 : 50	2	901
		Date	Dwg Rev	
		Feb 2023		

This drawing must be read in conjunction with relevant Redrow specifications, standard details & structural calculations. All dimension are taken from face of Brick/Block & Studwork. This drawing is subject to copyright law. Do Not Scale Off This Drawing