

| Window Schedule | | | | | | |
|-----------------|-------------|--------------|-------------------|-----------|---------------|------------------|
| Ref | Frame Width | Frame Height | Int Block Opening | Comments | P1A - Glazing | PAS 24 - Locking |
| W06 | 1835 | 1340 | 1845 | Esc/Guard | | |
| W07 | 1273 | 1040 | 1283 | | | |
| W08 | 1835 | 1340 | 1845 | Esc/Guard | | |
| W09 | 1273 | 1340 | 1283 | | | |
| W10 | 1273 | 1340 | 1283 | Esc/Guard | | |
| W11 | 710 | 1040 | 720 | Obs | | |
| W12 | 1273 | 1190 | 1283 | Esc/Guard | | |
| W13 | 710 | 1040 | 720 | Obs | | |

THE HANDLE TO AT LEAST ONE WINDOW IN THE PRINCIPLE LIVING AREA IS 450mm-1200mm ABOVE FLOOR LEVEL. HANDLES TO ALL OTHER WINDOWS ARE 450mm-1400mm ABOVE FLOOR LEVEL.

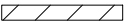


NOTE: ALL WINDOWS TO BE FITTED WITH OVER-FRAME TRICKLE VENTILATORS. FOR MINIMUM TRICKLE VENTILATION RATES FOR EACH WINDOW WIDTH SEE WINDOW AND DOOR SCHEDULE.

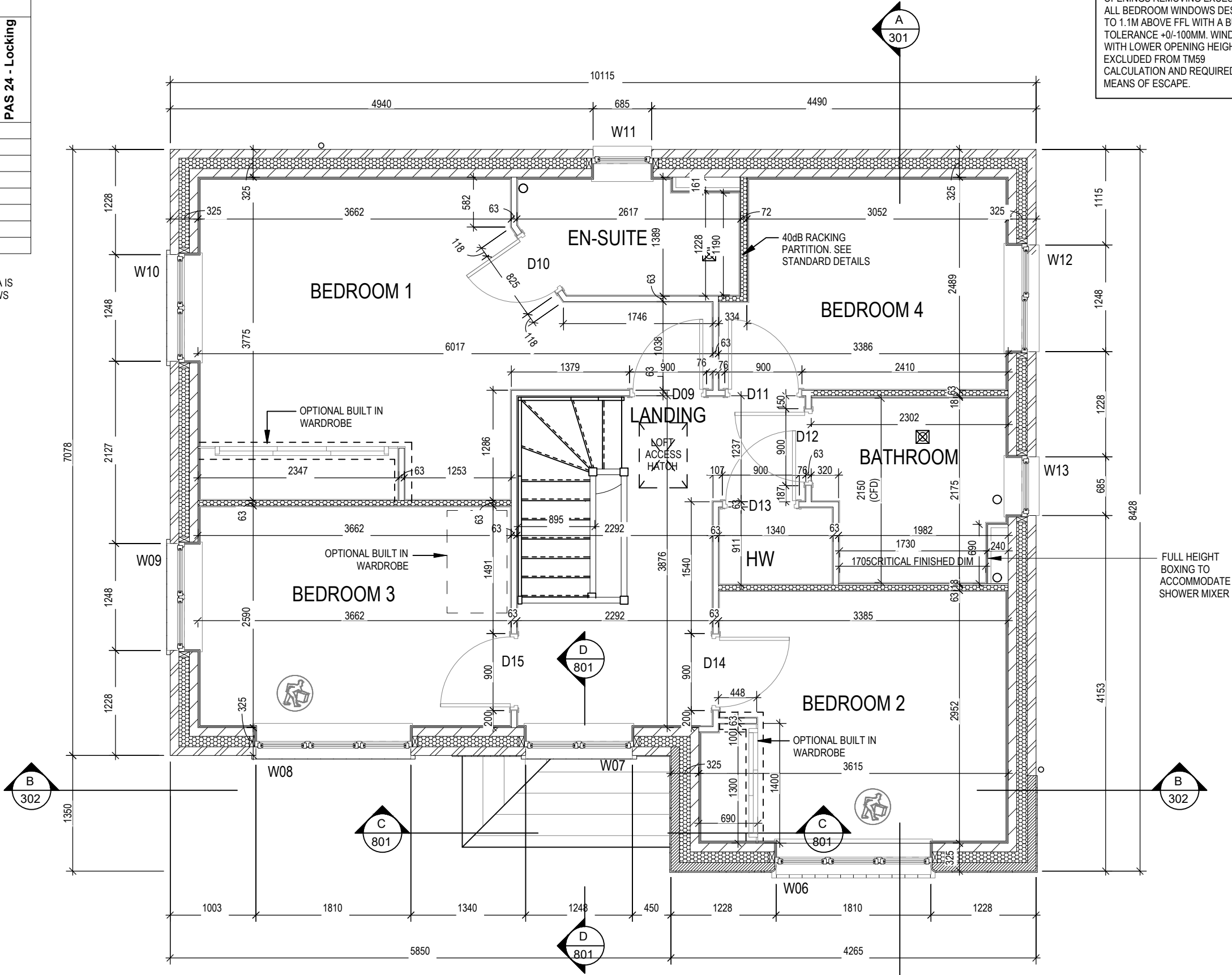
ALL WINDOWS TO BE SAFE CLEAN IN ACCORDANCE WITH B.S. 8213.

WHOLE HOUSE TRICKLE VENTILATION REQUIREMENT STATED ON VENTILATION DRAWING

| Door Schedule - Internal | | | | |
|--------------------------|-------|--------|-------------|------|
| Ref | Width | Height | Fire Rating | Code |
| D09 | 900 | 2150 | | HID2 |
| D10 | 825 | 2150 | | HID3 |
| D11 | 900 | 2150 | | HID2 |
| D12 | 900 | 2150 | | HID2 |
| D13 | 900 | 2150 | | HID2 |
| D14 | 900 | 2150 | | HID2 |
| D15 | 900 | 2150 | | HID2 |

WALL LEGEND

| WALL TYPE | SIZE (mm) | STRENGTH (N/mm²) | DENSITY (Kg/m³) | LAMBDA (Λ) |
|---|-----------|------------------|-----------------|------------|
| BLOCKWORK  | 100 | 3.6 | 600 | 0.15 |
| BLOCKWORK  | 100 | 3.6 | MIN 1350 | - |
| 40dB STUDWORK  | 63 (88) | - | - | - |



REFER TO TM59 CALCULATION FOR OPENINGS REMOVING EXCESS HEAT. ALL BEDROOM WINDOWS DESIGNED TO 1.1M ABOVE FFL WITH A BUILD TOLERANCE +0/-100MM. WINDOWS WITH LOWER OPENING HEIGHTS ARE EXCLUDED FROM TM59 CALCULATION AND REQUIRED FOR MEANS OF ESCAPE.

Shaftesbury

M4(2)
G SERIES

Structural Layout

First Floor

Dwg No

DCC

Scale

1 : 50

Date

Feb 2023

202

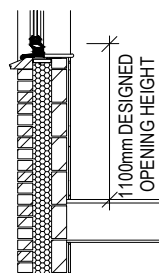
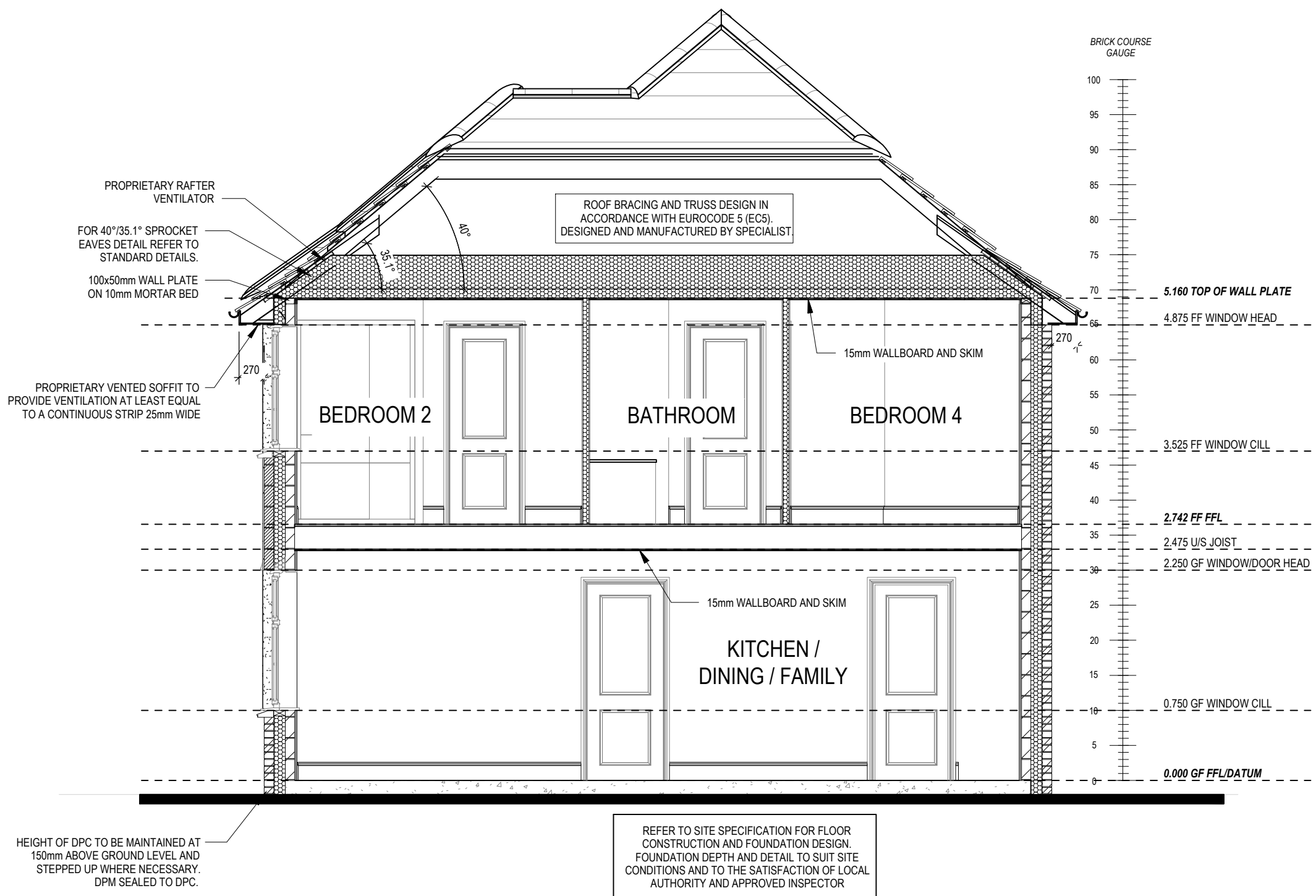
2

202

A

02/10/23

Bedroom 2 optional built in wardrobe opening increased to 1400mm



REFER TO TM59 CALCULATION FOR OPENINGS REMOVING EXCESS HEAT. ALL BEDROOM WINDOWS DESIGNED TO 1.1M ABOVE FFL WITH A BUILD TOLERANCE +0/-100MM. WINDOWS WITH LOWER OPENING HEIGHTS ARE EXCLUDED FROM TM59 CALCULATION AND REQUIRED FOR MEANS OF ESCAPE.

Shaftesbury

M4(2)
G SERIES

Section A-A

Dwg No

301

DCC

2

Scale

1 : 50

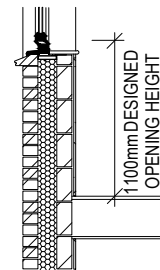
Date

Feb 2023

Dwg Rev



REFER TO SITE SPECIFICATION FOR FLOOR CONSTRUCTION AND FOUNDATION DESIGN. FOUNDATION DEPTH AND DETAIL TO SUIT SITE CONDITIONS AND TO THE SATISFACTION OF LOCAL AUTHORITY AND APPROVED INSPECTOR



REFER TO TM59 CALCULATION FOR OPENINGS REMOVING EXCESS HEAT. ALL BEDROOM WINDOWS DESIGNED TO 1.1M ABOVE FFL WITH A BUILD TOLERANCE +0/-100MM. WINDOWS WITH LOWER OPENING HEIGHTS ARE EXCLUDED FROM TM59 CALCULATION AND REQUIRED FOR MEANS OF ESCAPE.

PART 'O' COMPLIANCE DIAGRAM Scale: 1:50

Shaftesbury

G SERIES

Section B-B

Dwg No

DCC

Scale

1 : 50

Date

Feb 2023

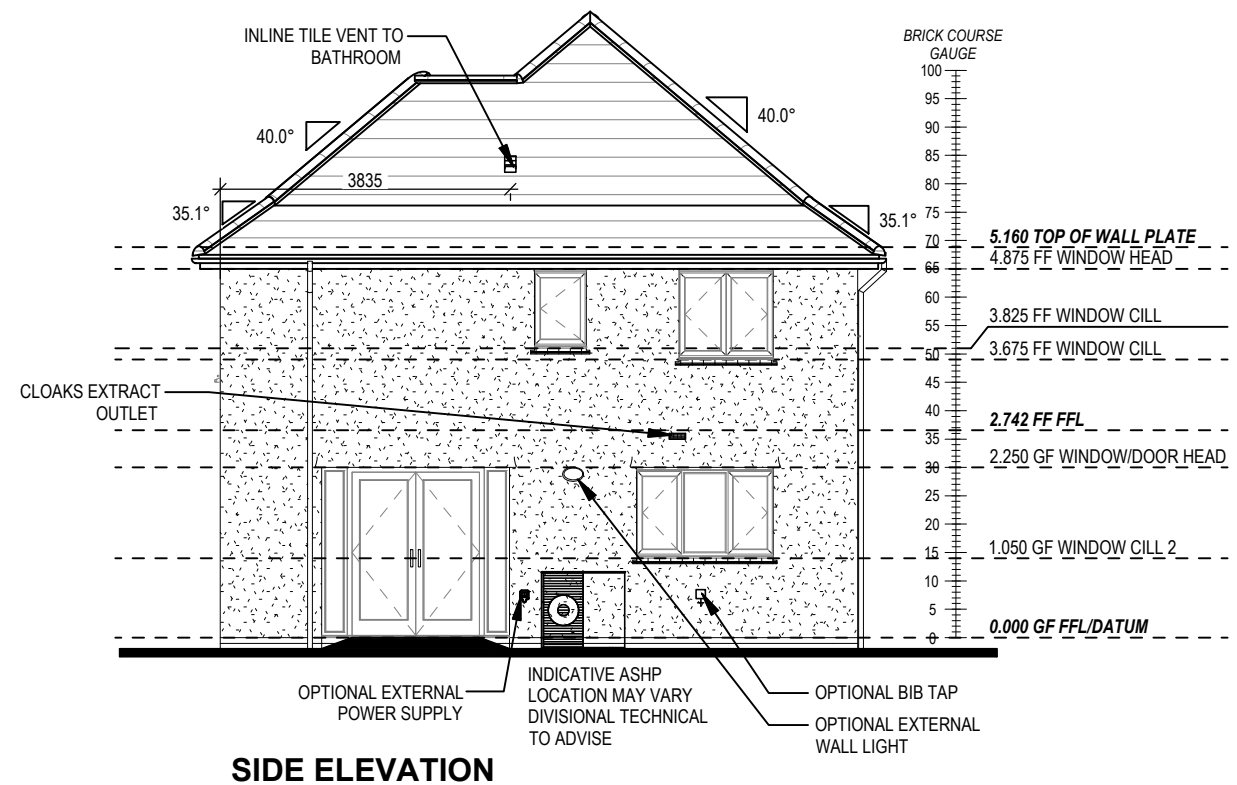
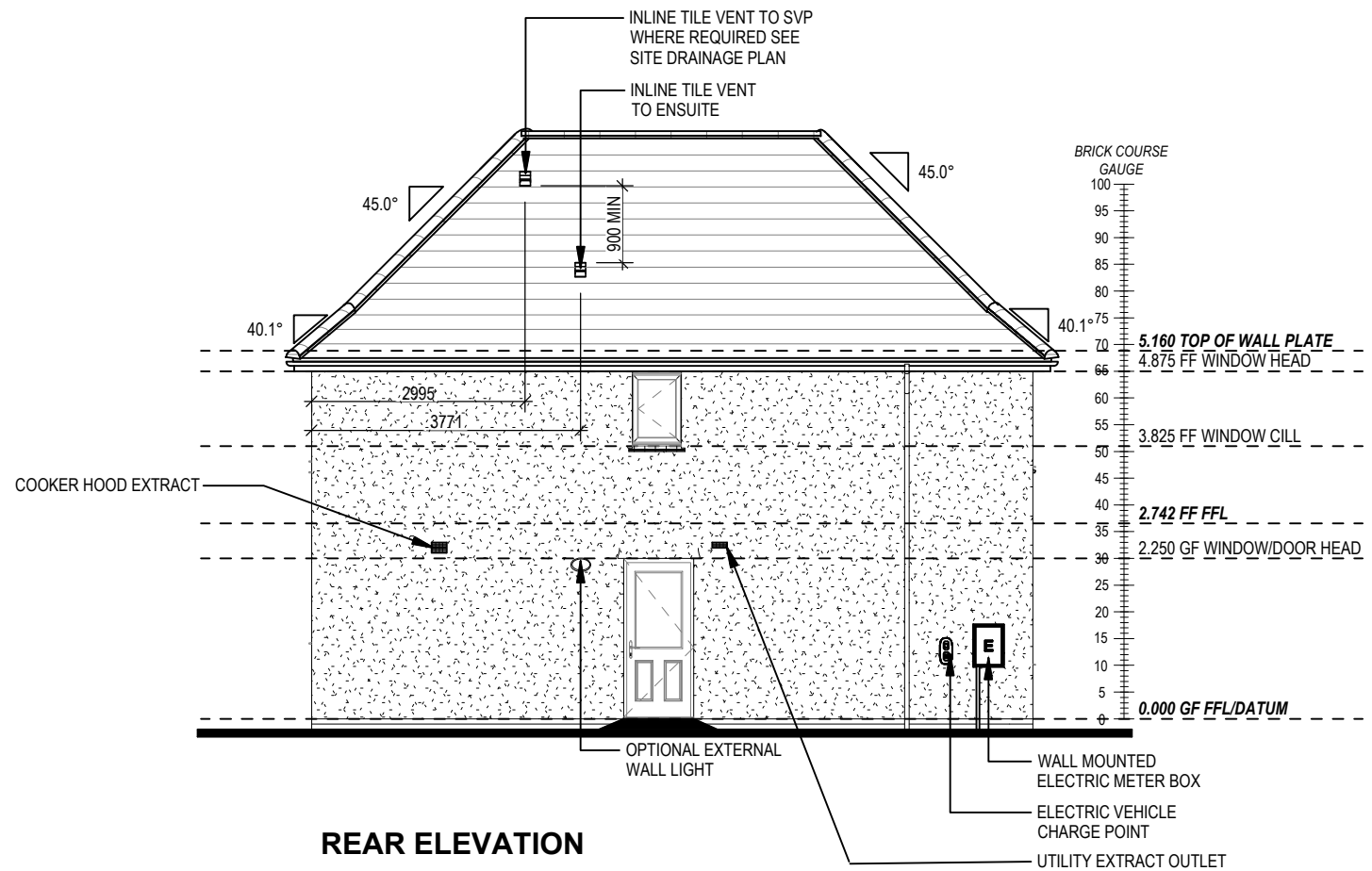
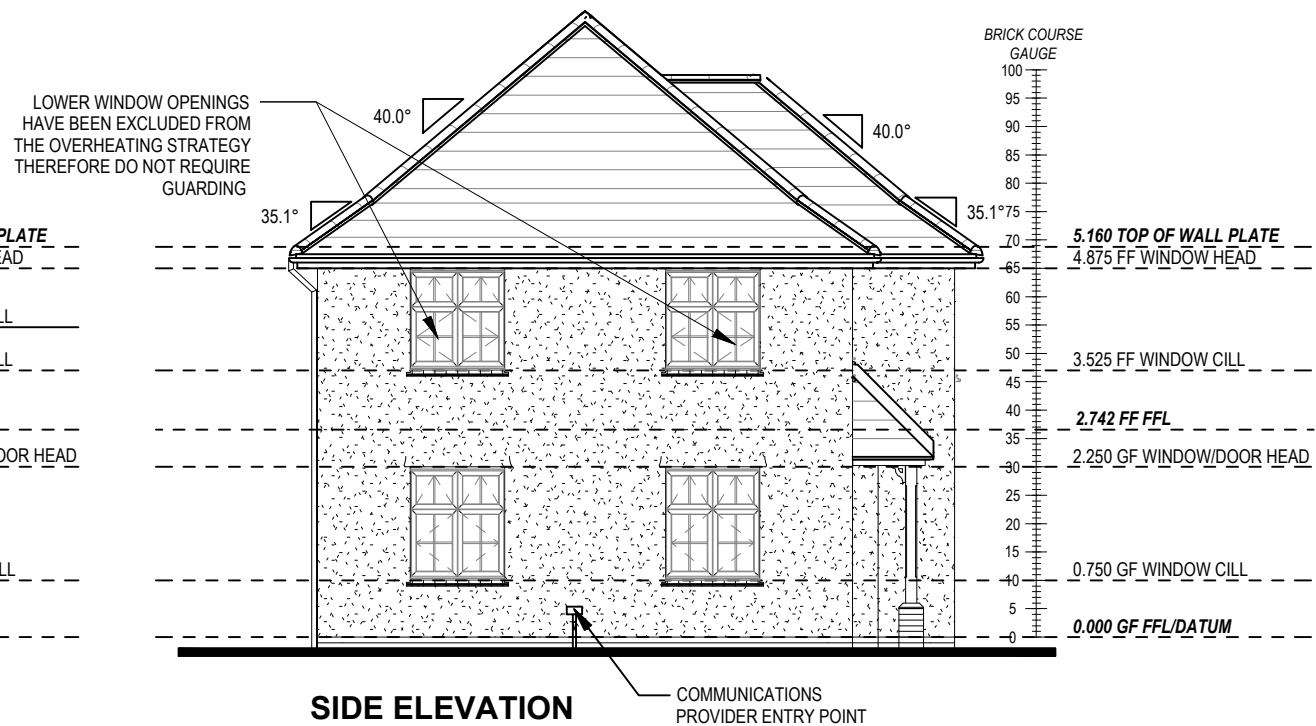
Dwg Rev

2

302

This drawing must be read in conjunction with relevant Redrow specifications, standard details & structural calculations. All dimension are taken from face of Brick/Block & Studwork. This drawing is subject to copyright law. Do Not Scale Off This Drawing

REFER TO TM59 CALCULATION FOR OPENINGS REMOVING EXCESS HEAT. ALL BEDROOM WINDOWS DESIGNED TO 1.1M ABOVE FFL WITH A BUILD TOLERANCE +0/-100MM. WINDOWS WITH LOWER OPENING HEIGHTS ARE EXCLUDED FROM TM59 CALCULATION AND REQUIRED FOR MEANS OF ESCAPE.

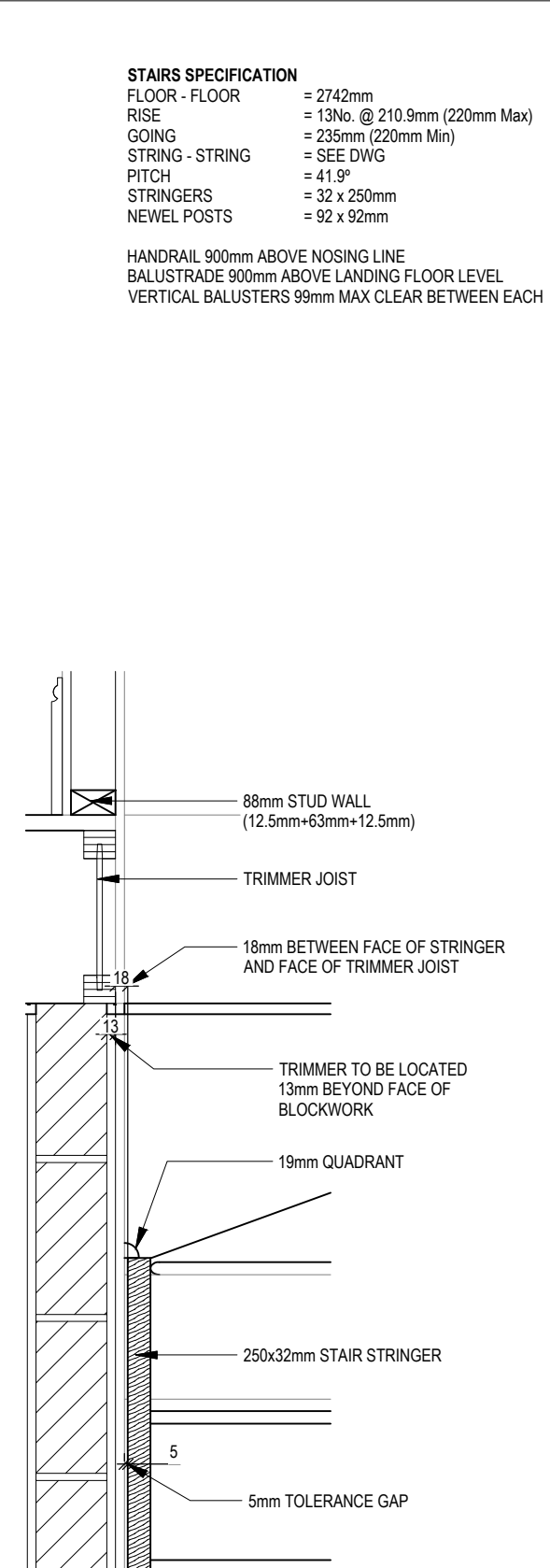
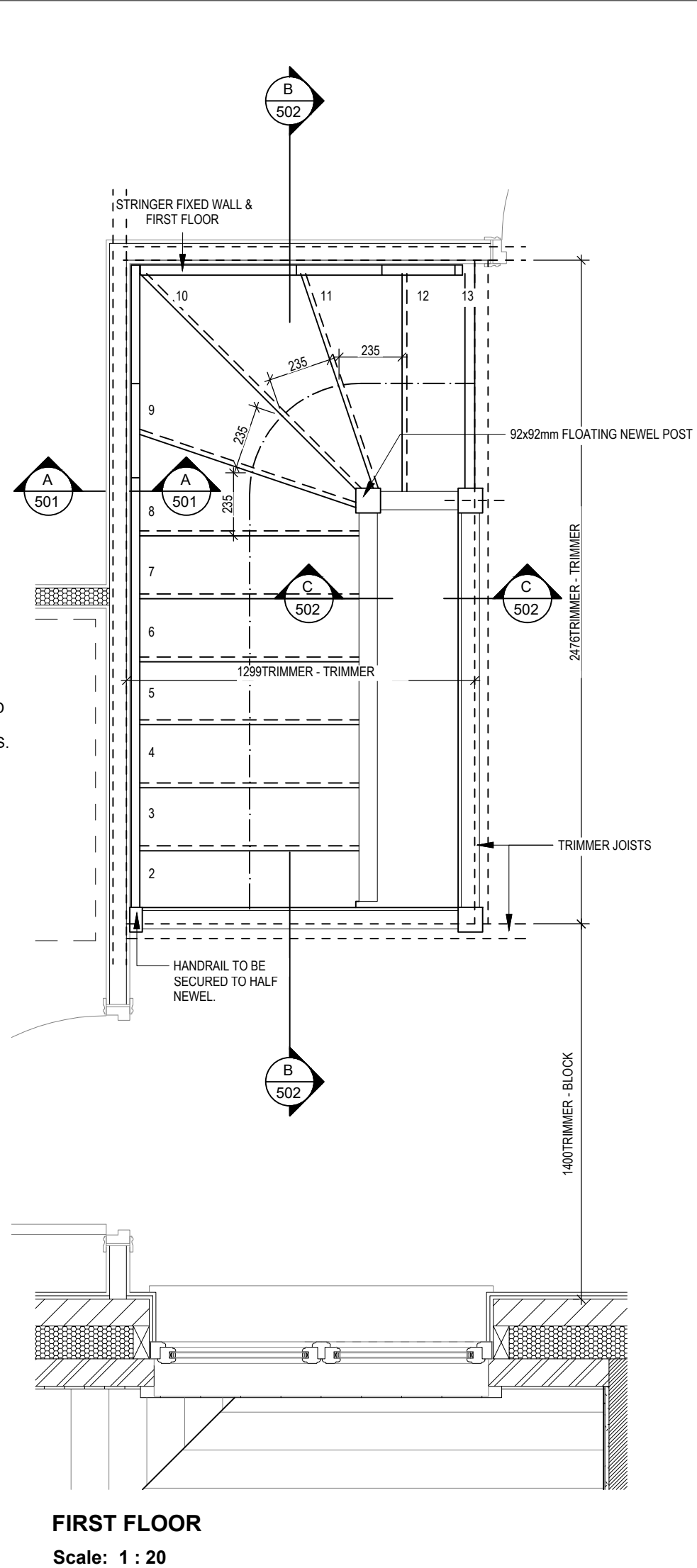
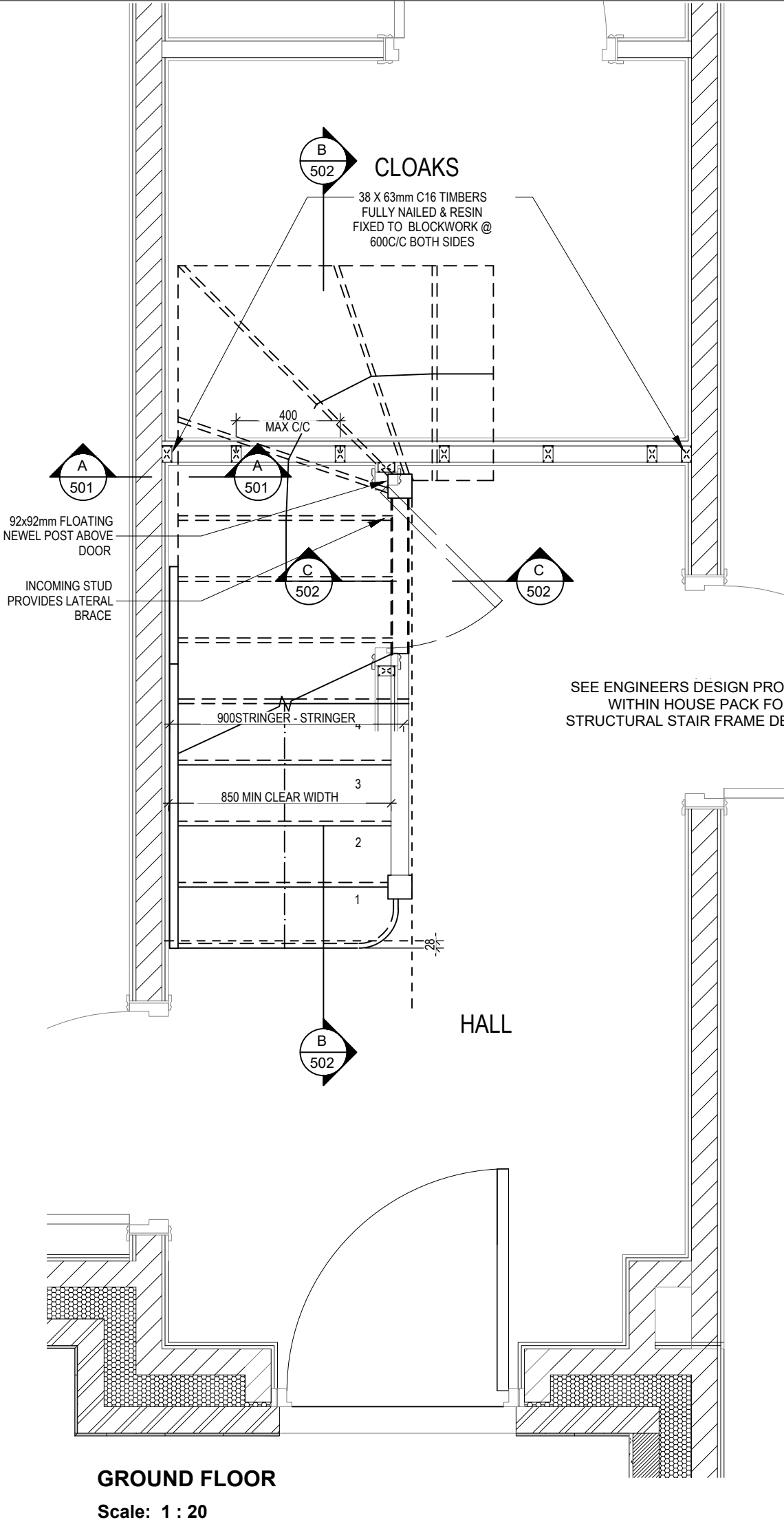


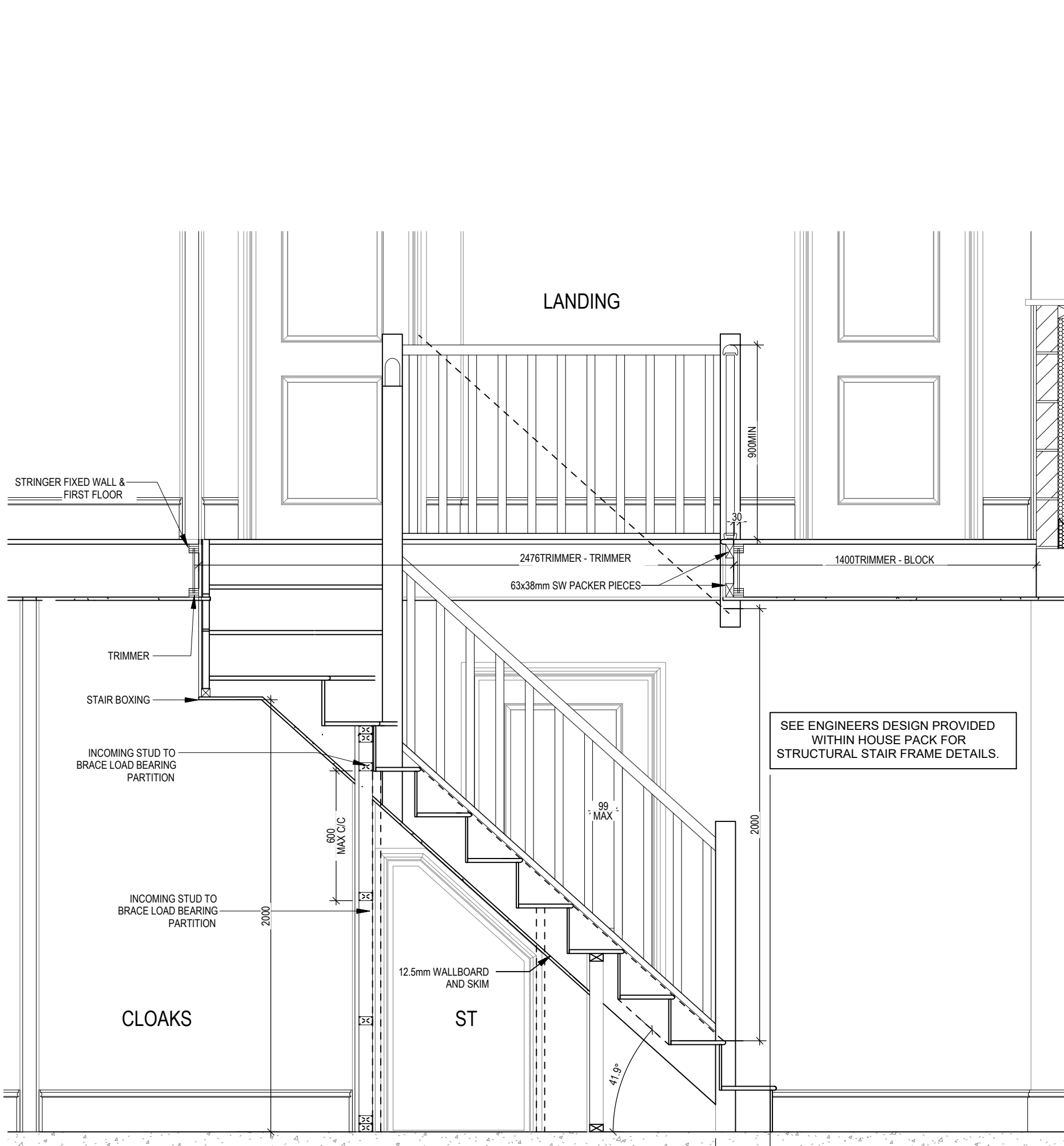
| | | | |
|---------------------------|----------|-----|---------|
| Shaftesbury Elevations A1 | Scale | DCC | Dwg No |
| | 1:100 | 2 | 401 |
| | Date | | Dwg Rev |
| | Feb 2023 | | A |

M4(2) G SERIES

02/10/23

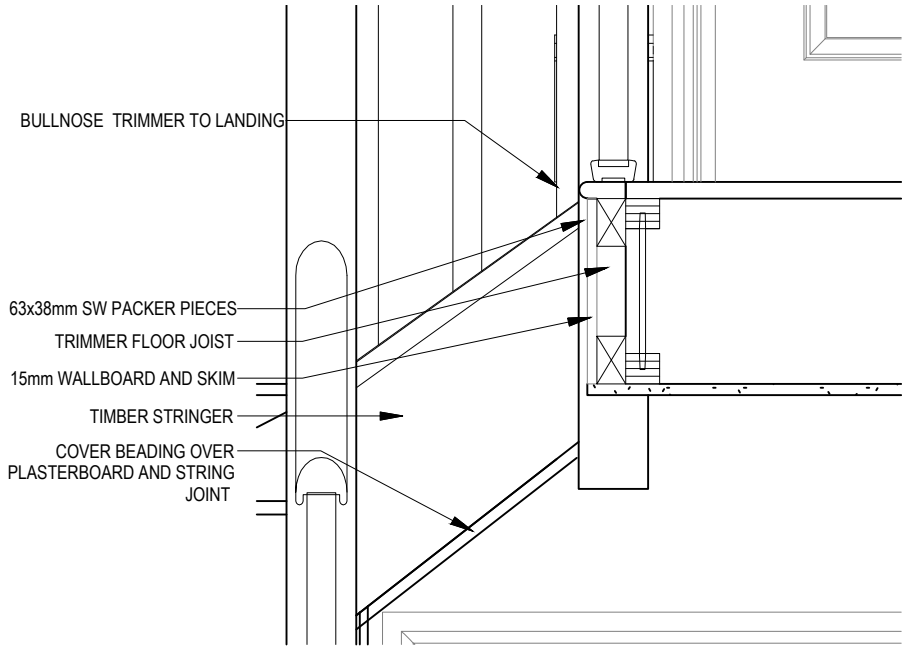
A Window openers amended





SECTION B-B
Scale: 1 : 20

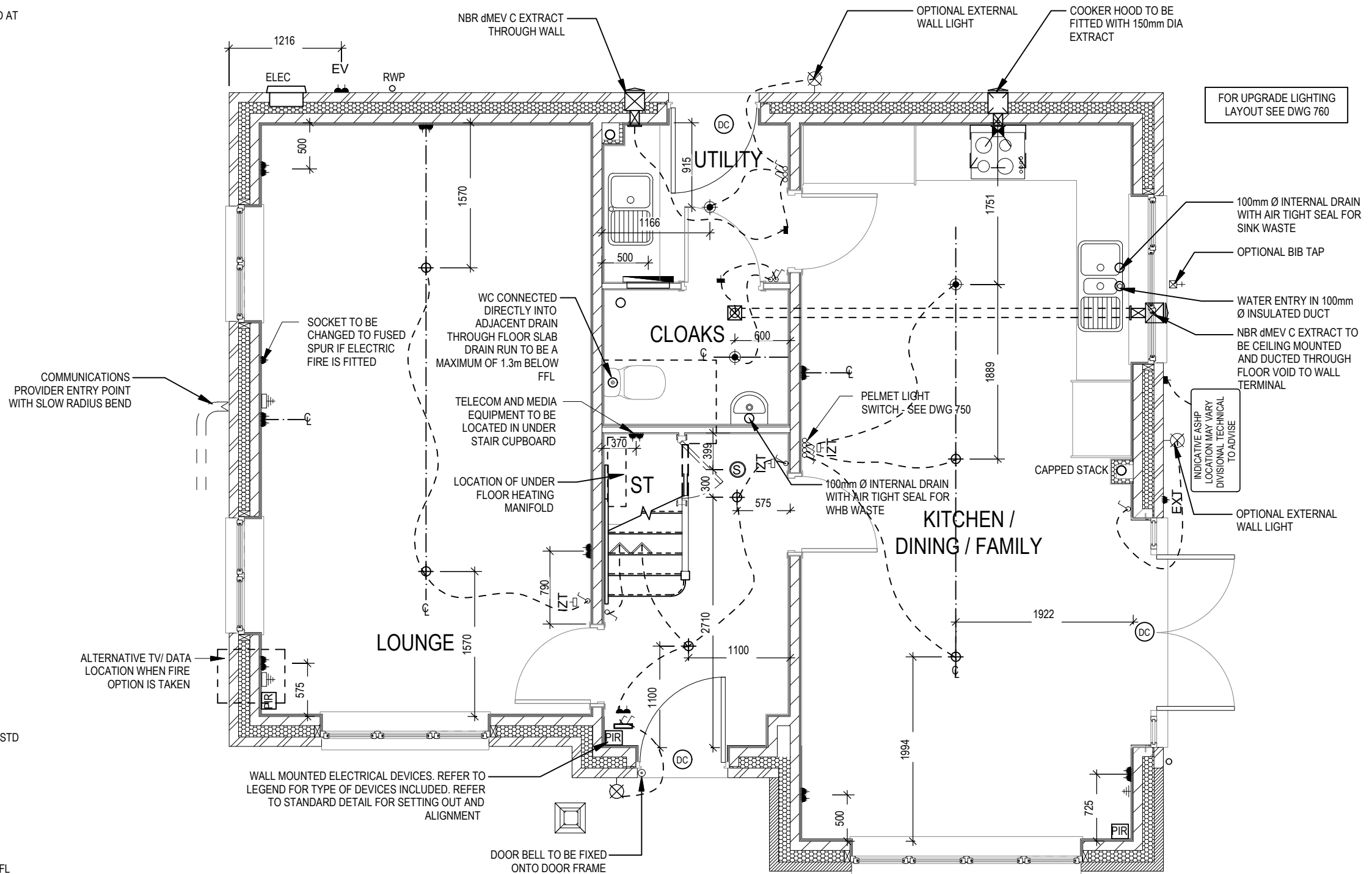
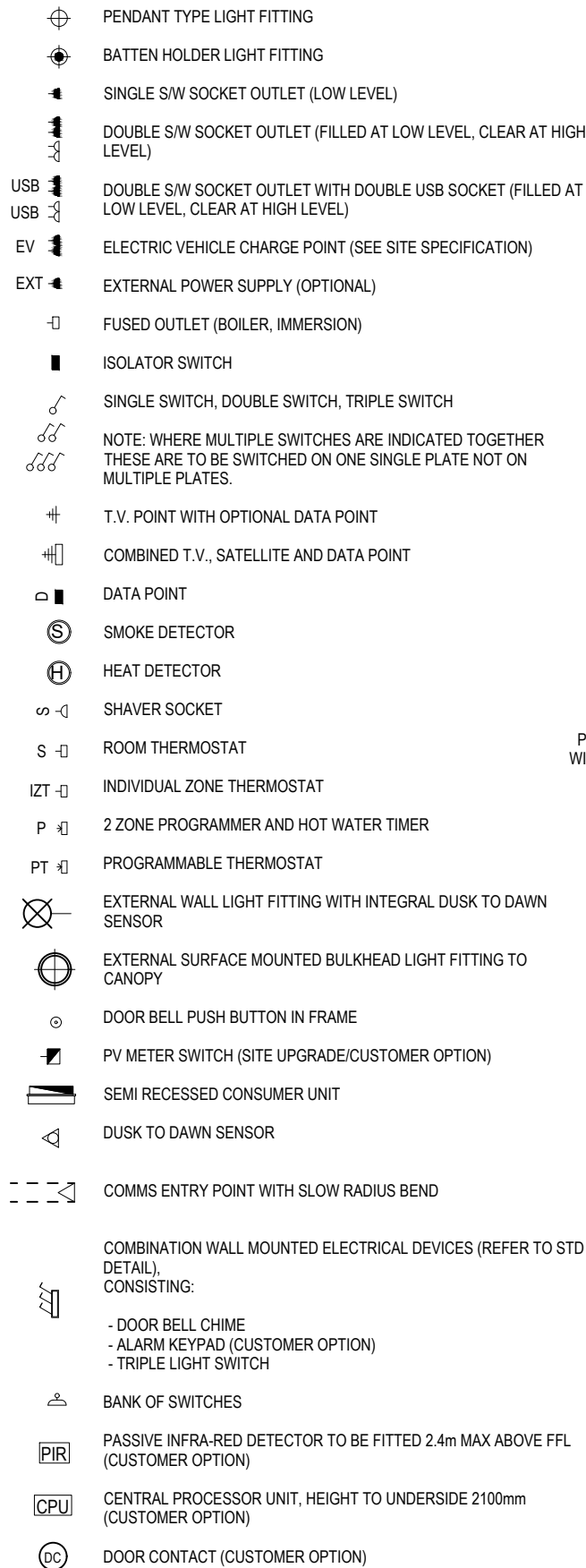
| | |
|--|-------------------------------|
| STAIRS SPECIFICATION | |
| FLOOR - FLOOR | = 2742mm |
| RISE | = 13No. @ 210.9mm (220mm Max) |
| GOING | = 235mm (220mm Min) |
| STRING - STRING | = SEE DWG |
| PITCH | = 41.9° |
| STRINGERS | = 32 x 250mm |
| NEWEL POSTS | = 92 x 92mm |
| HANDRAIL 900mm ABOVE NOSING LINE | |
| BALUSTRADE 900mm ABOVE LANDING FLOOR LEVEL | |
| VERTICAL BALUSTERS 99mm MAX CLEAR BETWEEN EACH | |



SECTION C-C
Scale: 1 : 10

| | | | | | | |
|-------------|-------------------|--------------------------|--------------|-----|----------|----------|
| Shaftesbury | M4(2) G SERIES | Staircase details 2 of 2 | Scale | DCC | Dwg No | 02/10/23 |
| | | | As Indicated | 2 | | |
| | | | Date | | Dwg Rev | |
| | | | | | A | |
| | | | | | Feb 2023 | |

ELECTRICAL LEGEND



Shaftesbury

M4(2)

G SERIES

Services Layout

Ground Floor

Scale

1 : 50

Date

Feb 2023

DCC

2

Dwg No

601

Dwg Rev

B

| | | |
|---|-------------------------------------|----------|
| A | PIR added in Hall | 02.10.23 |
| B | System 3 dMEV C extracts indicated. | 23.04.24 |

ELECTRICAL LEGEND

- ⏏

FUSED OUTLET (BOILER, IMMERSION)
- ISOLATOR SWITCH
- UFH

OPTIONAL ELECTRIC UNDER FLOOR HEATING WITH CONTROLLER AND STAT
- ⏏

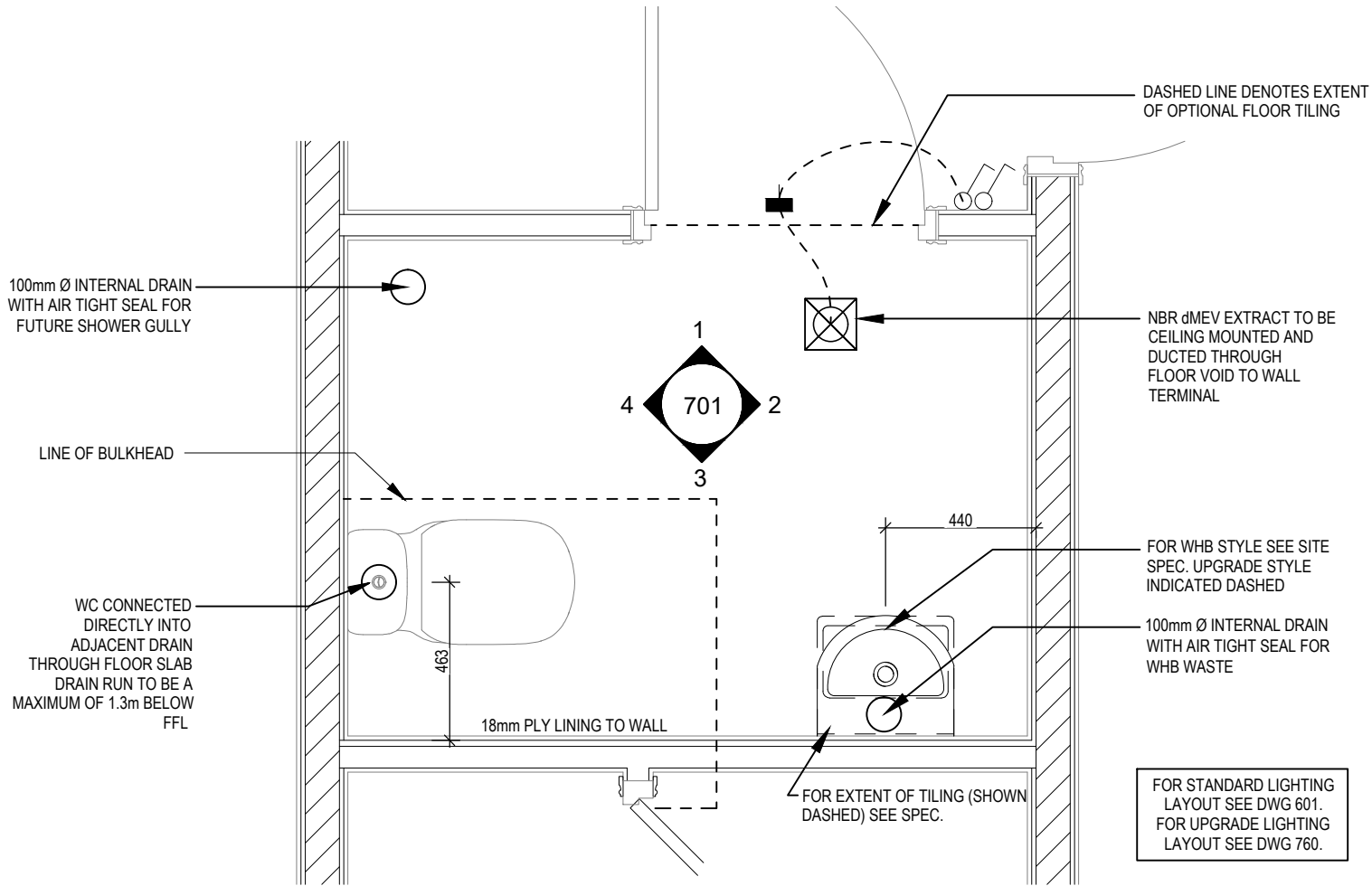
SINGLE SWITCH
- ⏏⏏

DOUBLE SWITCH
- ⏏⏏⏏

TRIPLE SWITCH
- NOTE: WHERE MULTIPLE SWITCHES ARE INDICATED TOGETHER THESE ARE TO BE SWITCHED ON ONE SINGLE PLATE NOT ON MULTIPLE PLATES.
- ⏏

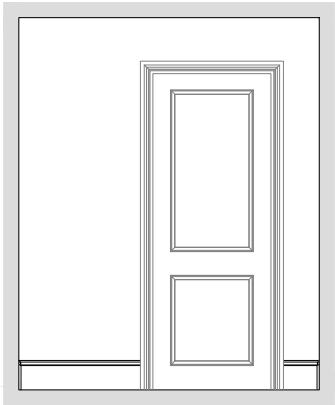
SHAVER SOCKET
- Di

OPTIONAL DIGITAL SHOWER SWITCH



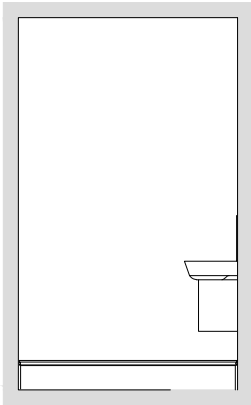
CLOAKS LAYOUT

Scale: 1 : 20

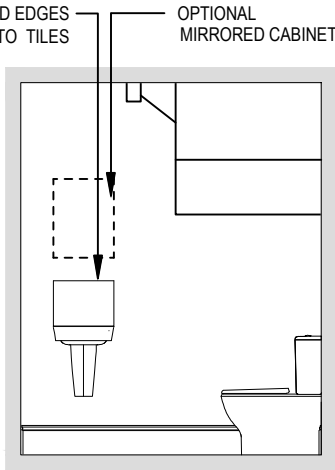


VIEW 1

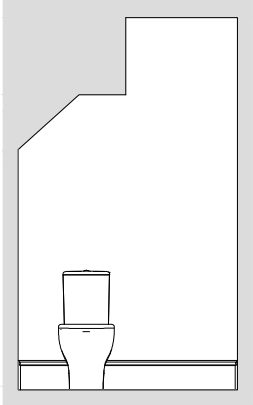
Scale: 1 : 50



VIEW 2



VIEW 3



VIEW 4

ELECTRICAL LEGEND

- ⏏

FUSED OUTLET (BOILER, IMMERSION)
- ISOLATOR SWITCH
- UFH

OPTIONAL ELECTRIC UNDER FLOOR HEATING WITH CONTROLLER AND STAT
- ⏏

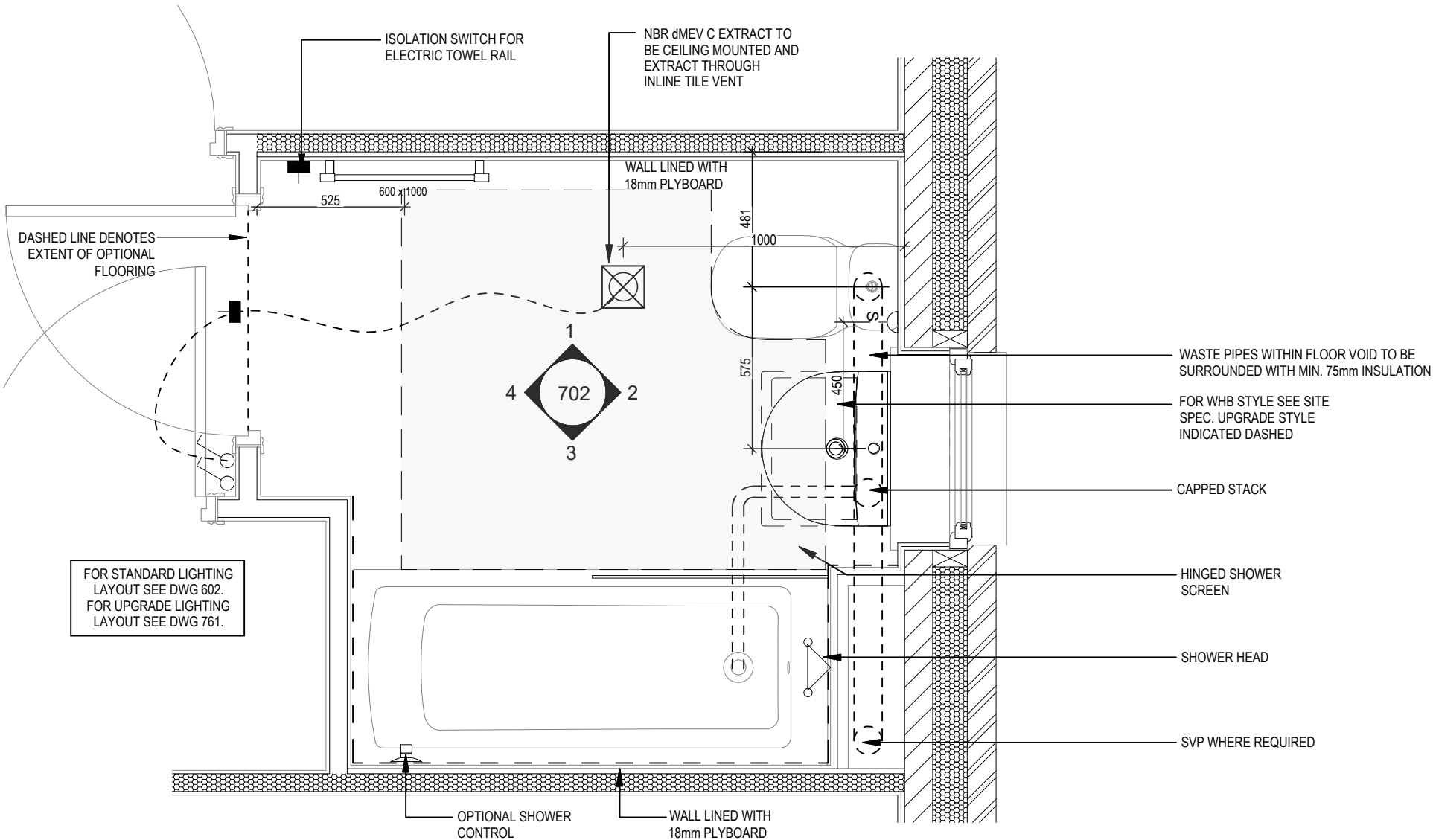
SINGLE SWITCH
- ⏏⏏

DOUBLE SWITCH
- ⏏⏏⏏

TRIPLE SWITCH
- NOTE: WHERE MULTIPLE SWITCHES ARE INDICATED TOGETHER THESE ARE TO BE SWITCHED ON ONE SINGLE PLATE NOT ON MULTIPLE PLATES.
- ⏏-1

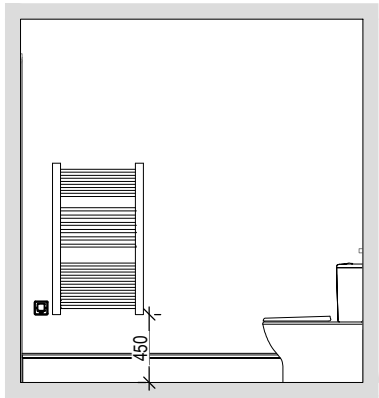
SHAVER SOCKET
- Di

OPTIONAL DIGITAL SHOWER SWITCH



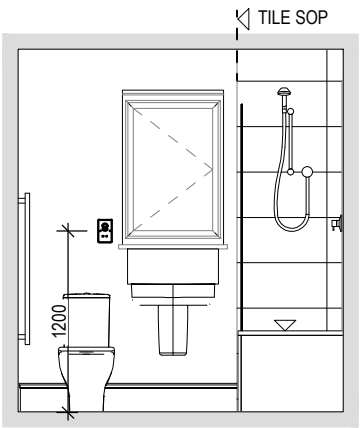
BATHROOM LAYOUT

Scale: 1 : 20

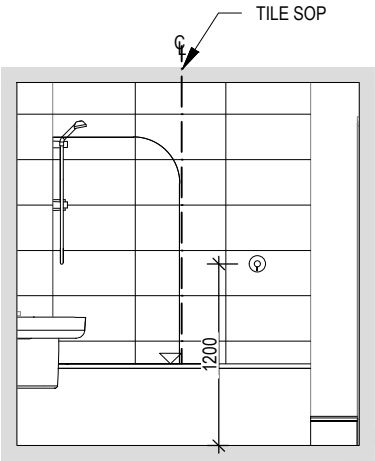


VIEW 1

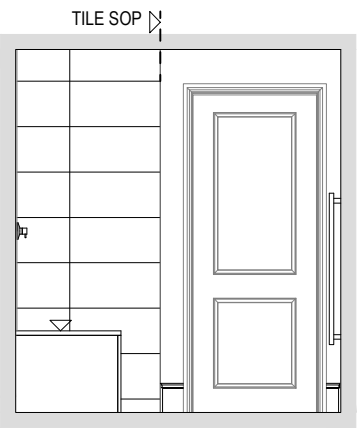
Scale: 1 : 50



VIEW 2



VIEW 3



VIEW 4

Shaftesbury

M4(2)
G SERIES

Bathroom Details

Scale
AS
Indicated
Date
Feb 2023

DCC
2




Dwg No
702

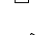
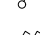
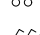
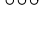
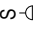
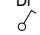
Dwg Rev
A

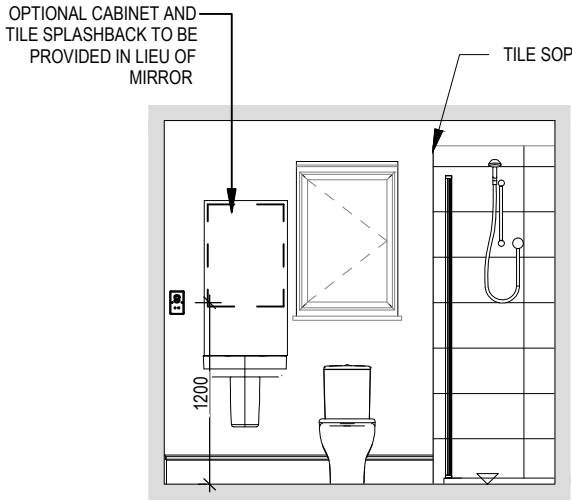
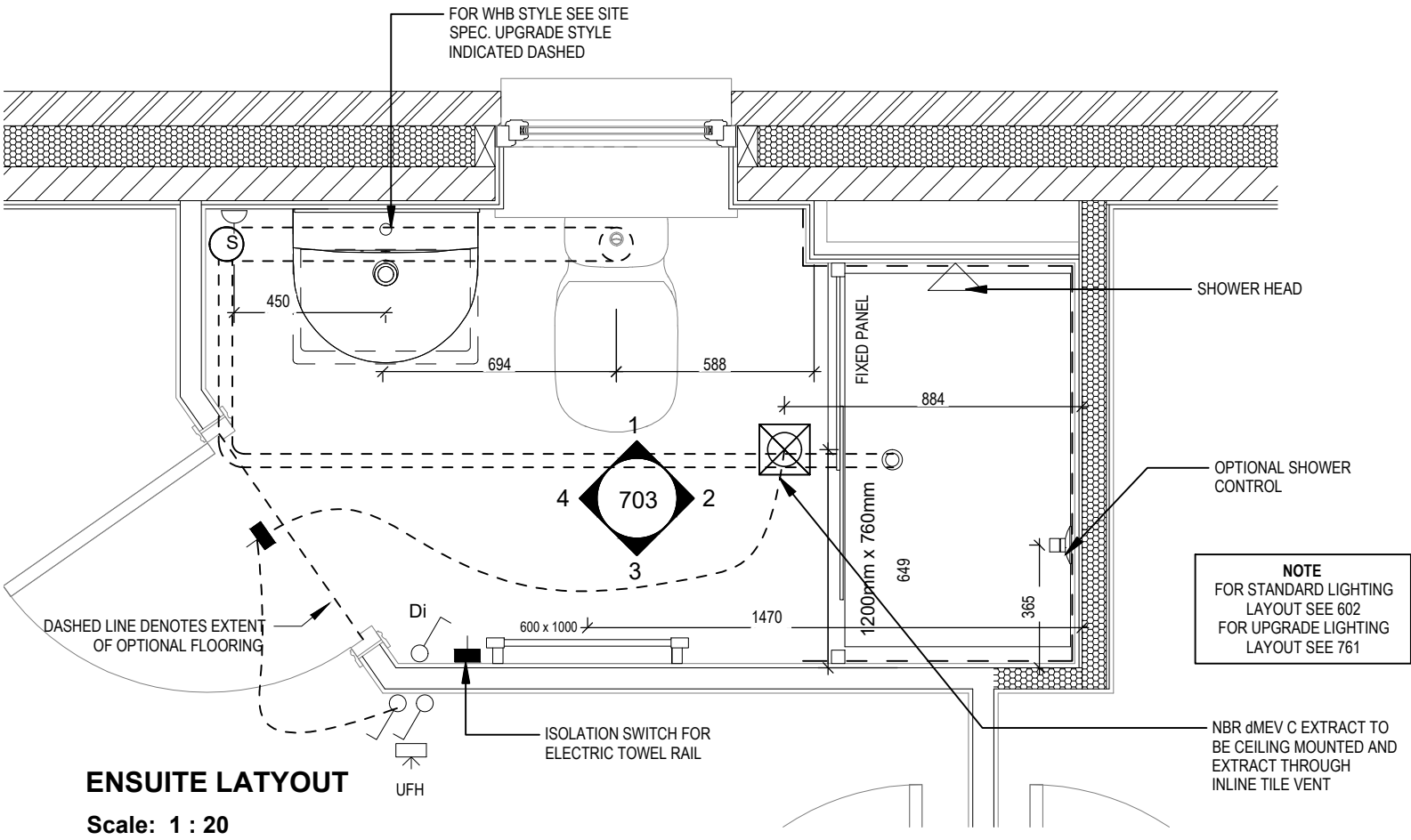
A System 3 dMEV C extracts indicated.

23.04.24

ELECTRICAL LEGEND

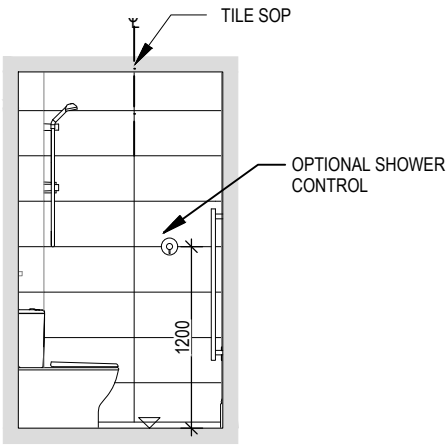
-  FUSED OUTLET (BOILER, IMMERSION)
-  ISOLATOR SWITCH
-  UFH

 OPTIONAL ELECTRIC UNDER FLOOR HEATING WITH CONTROLLER AND STAT
-  SINGLE SWITCH
-  DOUBLE SWITCH
-  TRIPLE SWITCH
- NOTE: WHERE MULTIPLE SWITCHES ARE INDICATED TOGETHER THESE ARE TO BE SWITCHED ON ONE SINGLE PLATE NOT ON MULTIPLE PLATES.
-  SHAVER SOCKET
-  OPTIONAL DIGITAL SHOWER SWITCH

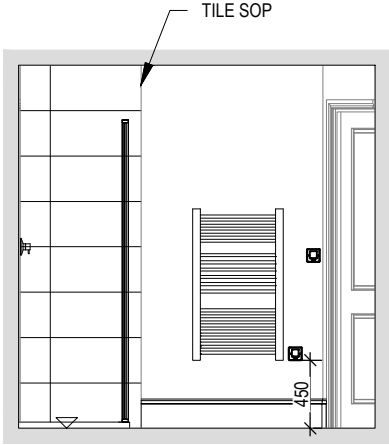


VIEW 1

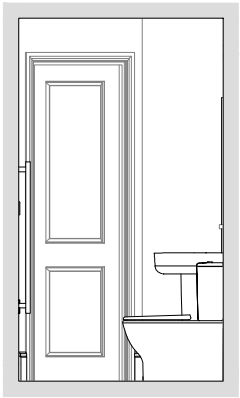
Scale: 1 : 50



VIEW 2



VIEW 3



VIEW 4

| | | | | | |
|-------------|-----------------|-------------------------------------|----------|--------|---------|
| Shaftesbury | Ensuite Details | Scale | DCC | Dwg No | Dwg Rev |
| | | AS | 2 | 703 | A |
| | | Indicated | | | |
| | | Date | Feb 2023 | | |
| | | 23 04 24 | | | |
| | | System 3 dMEV C extracts indicated. | | | |
| | | A | | | |

This drawing must be read in conjunction with relevant Redrow specifications, standard details & structural calculations. All dimension are taken from face of Brick/Block & Studwork. This drawing is subject to copyright law. Do Not Scale Off This Drawing

ELECTRICAL LEGEND

- △ PELMET LIGHT FITTING
- FUSED OUTLET (BOILER, IMMERSION)
- ISOLATOR SWITCH
- SINGLE SWITCH
- ⌘ DOUBLE SWITCH
- ⌘⌘ TRIPLE SWITCH

NOTE: WHERE MULTIPLE SWITCHES ARE INDICATED TOGETHER THESE ARE TO BE SWITCHED ON ONE SINGLE PLATE NOT ON MULTIPLE PLATES.

- ⌘ BANK OF SWITCHES TO ISOLATE HOB, EXTRACTOR HOOD, WASHING MACHINE, DISHWASHER, TUMBLE DRYER, FRIDGE/FREEZER, MICROWAVE OVEN, OPTIONAL WATER HEATER WITH NEON INDICATOR, ALL IN ACCORDANCE WITH THE APPLIANCE/SPACE PROVIDED ON LAYOUT.

- ⌘ UNSWITCHED SOCKET / FUSED SPUR, TO BE CEILING MOUNTED, SEE STANDARD DETAILS

- SINGLE UNSWITCHED SOCKET (HIGH LEVEL)
- SINGLE UNSWITCHED SOCKET (LOW LEVEL)
- SINGLE UNSWITCHED FUSED SPUR (LOW LEVEL)
- ⌘ DOUBLE S/W SOCKET OUTLET (HIGH LEVEL)
- ⌘ DOUBLE S/W SOCKET OUTLET (LOW LEVEL)

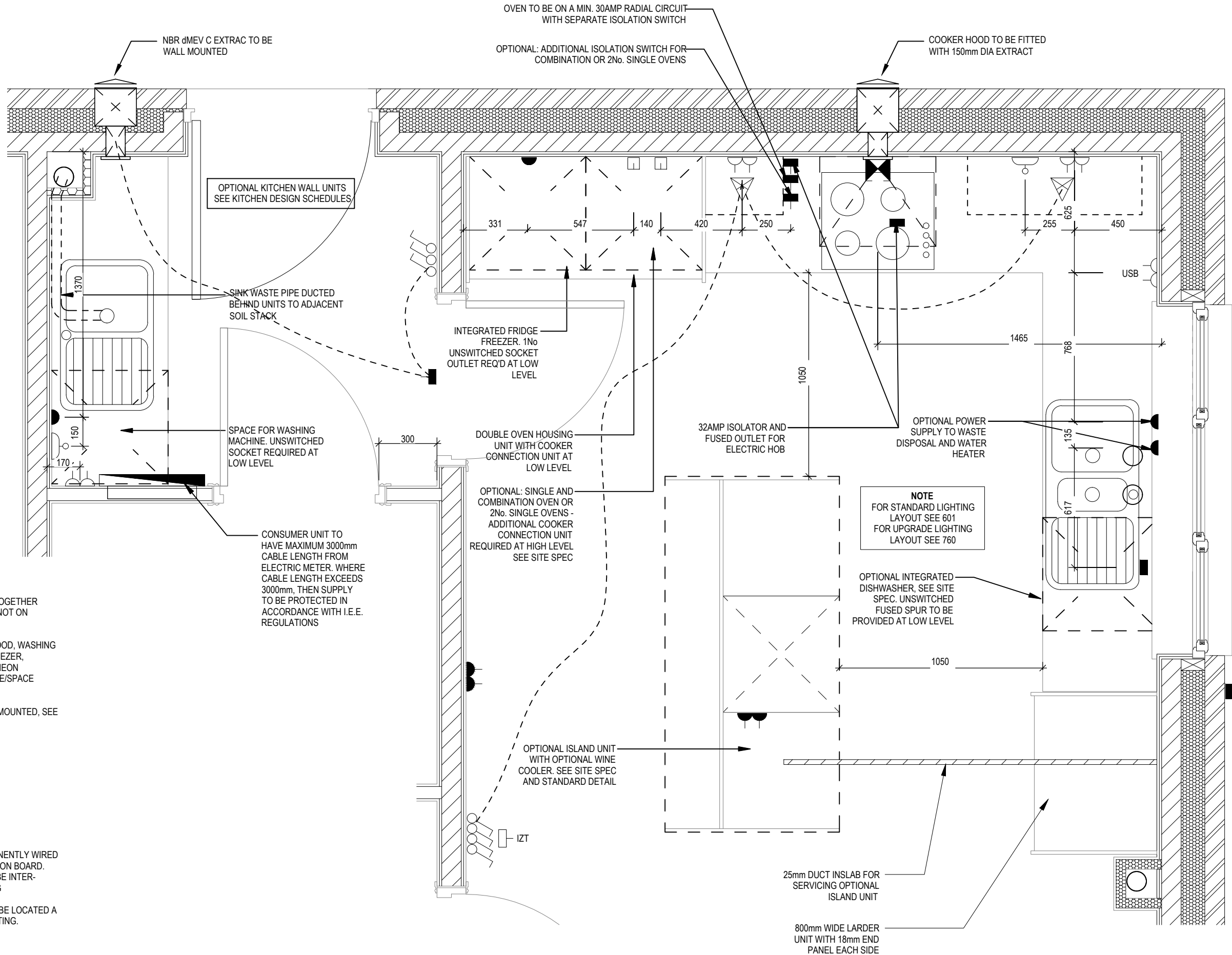
- Ⓜ HEAT DETECTOR TO BS EN 14604: 2005, TO BE PERMANENTLY WIRED TO A SEPARATELY FUSED CIRCUIT AT THE DISTRIBUTION BOARD. WHERE MORE THAN ONE ARE INSTALLED THEY WILL BE INTER-CONNECTED. WIRING SHALL CONFORM TO IEE WIRING REGULATIONS. HEAT DETECTOR TO HAVE BATTERY BACKUP AND TO BE LOCATED A MIN. OF 300mm AWAY FROM ANY WALL AND LIGHT FITTING.

- USB ⌘ DOUBLE S/W SOCKET OUTLET WITH USB (HIGH LEVEL)

- COOKER CONNECTION UNIT

- P ⌘ 2 ZONE PROGRAMMER & HOT WATER TIMER

- PT ⌘ PROGRAMMABLE THERMOSTAT



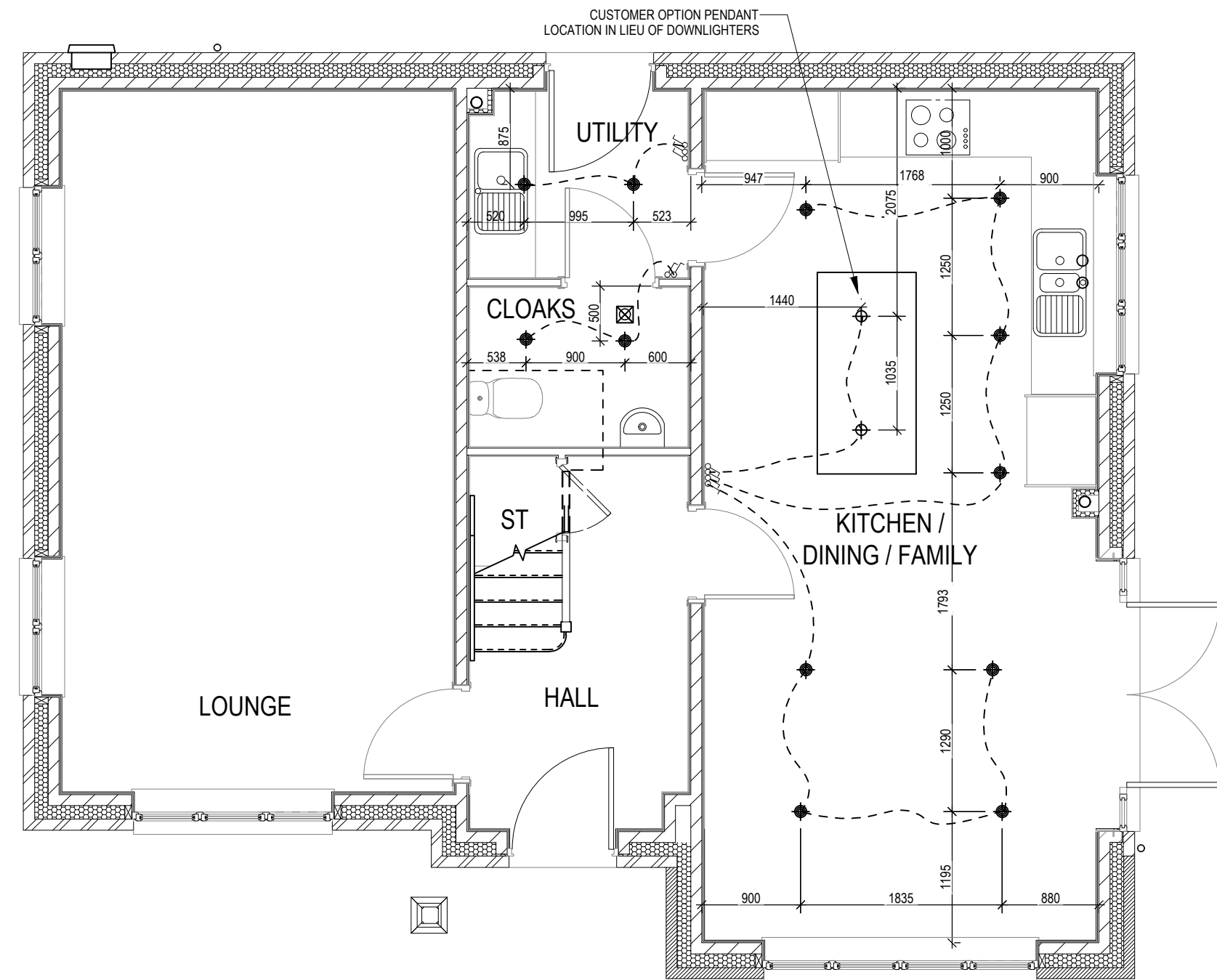
Kitchen & Utility
Layouts

Shaftesbury
M4(2)
G SERIES

DCC Scale 1:20 Date Feb 2023
Dwg No 750 Dwg Rev A

A System 3 dMEV C extracts indicated.

23.04.24

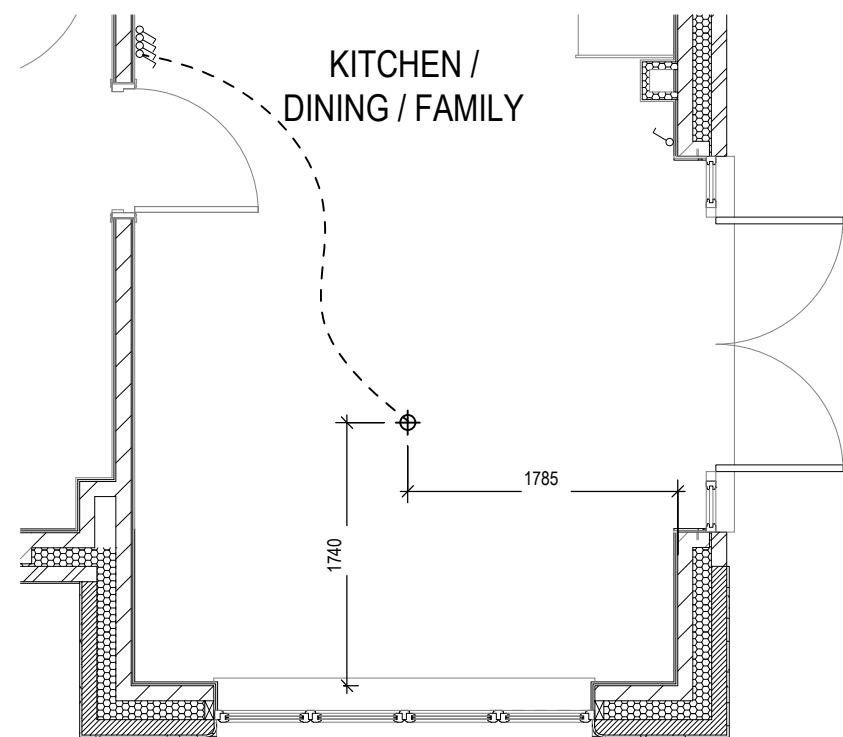


UPGRADE / CUSTOMER OPTION LIGHTING LAYOUT

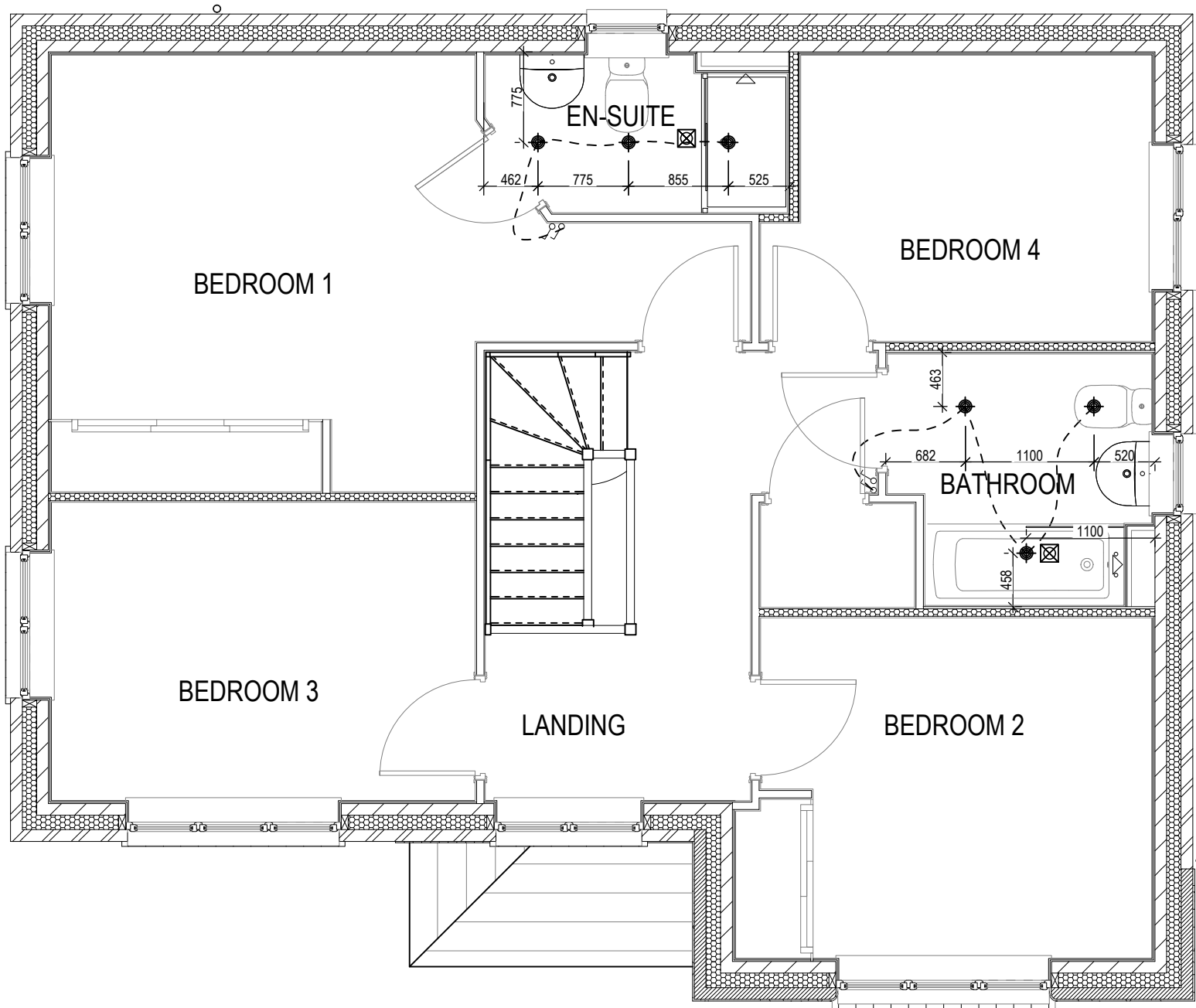
ELECTRICAL LEGEND

- OPTIONAL LOW VOLTAGE DOWNLIGHTER FITTING
- SINGLE SWITCH
- DOUBLE SWITCH
- TRIPLE SWITCH

NOTE: WHERE MULTIPLE SWITCHES ARE INDICATED TOGETHER THESE ARE TO BE SWITCHED ON ONE SINGLE PLATE NOT ON MULTIPLE PLATES.

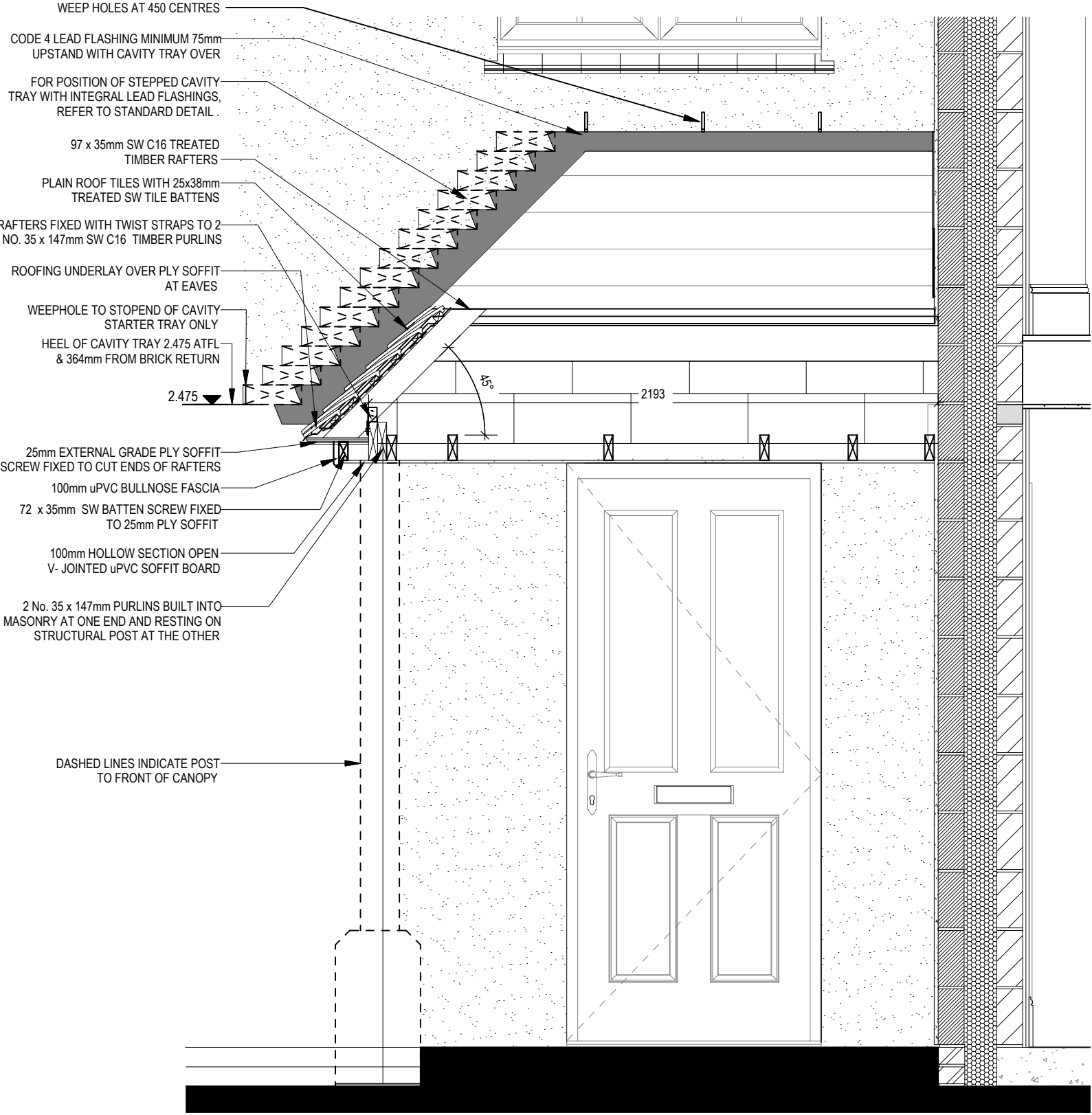


SHOWHOME LIGHTING LAYOUT

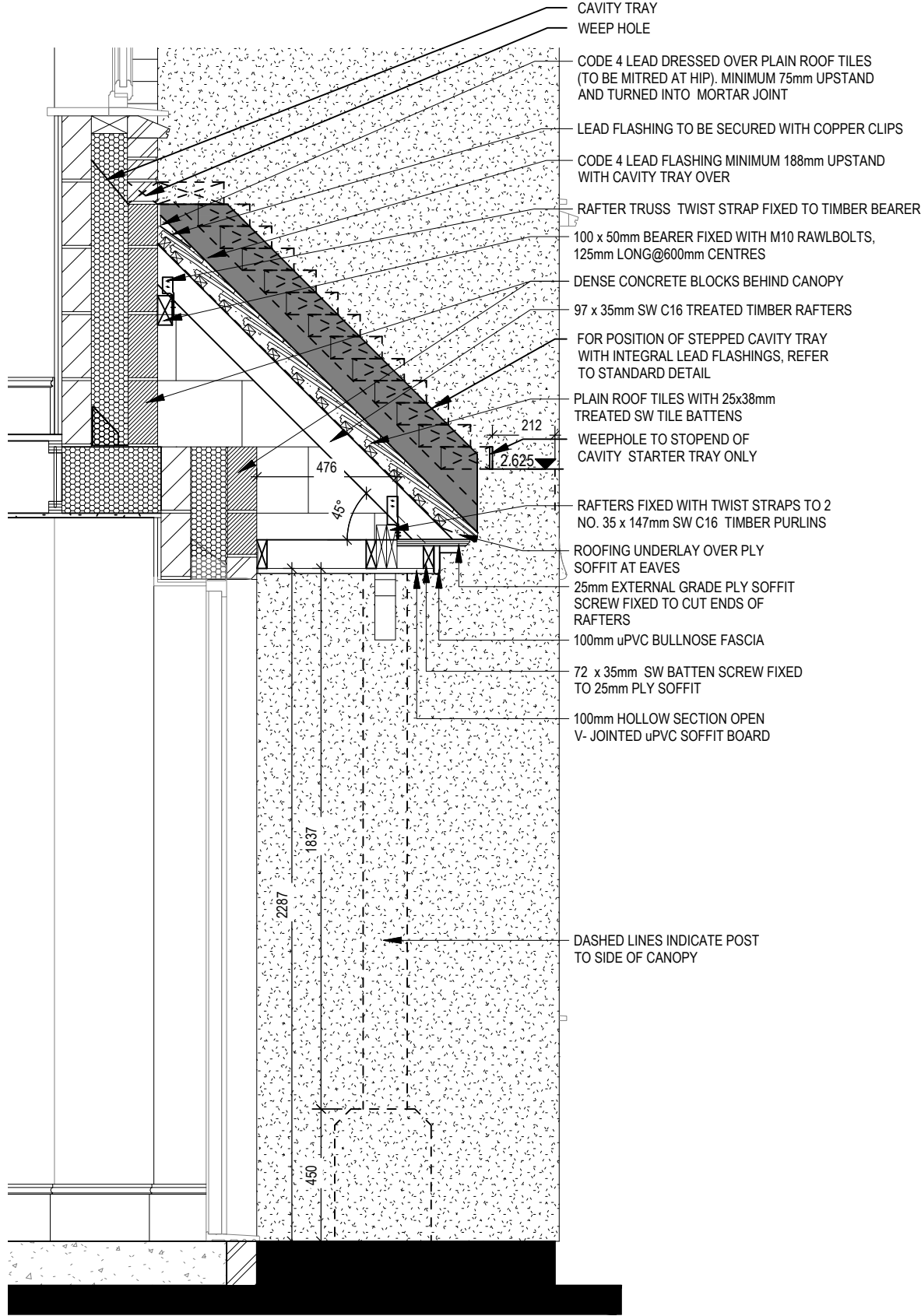


- ELECTRICAL LEGEND**
- OPTIONAL LOW VOLTAGE DOWNLIGHTER FITTING
 - SINGLE SWITCH
 - DOUBLE SWITCH
 - TRIPLE SWITCH

NOTE: WHERE MULTIPLE SWITCHES ARE INDICATED TOGETHER THESE ARE TO BE SWITCHED ON ONE SINGLE PLATE NOT ON MULTIPLE PLATES.



SECTION C-C



SECTION D-D