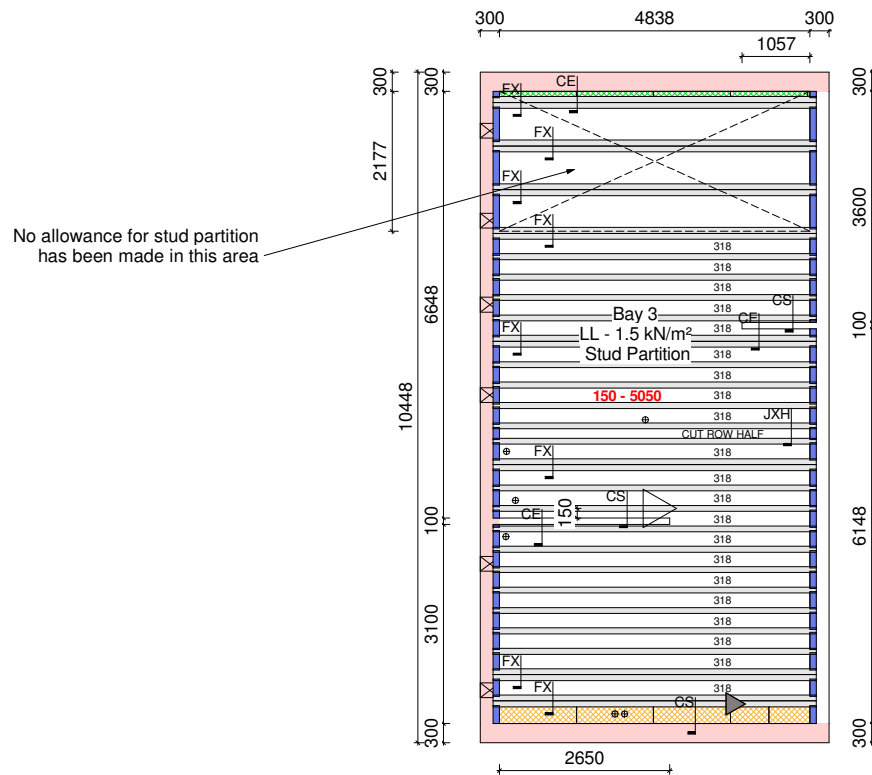
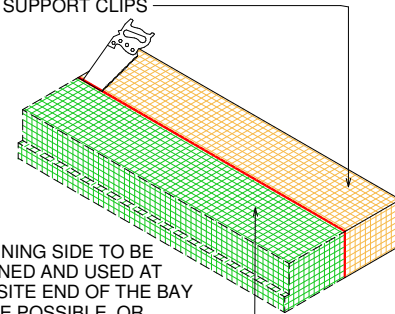




All partitions not supported off a footing below are assumed to be 1.2kN/m² Max. Non-load bearing studding. (Except where indicated on drawing)

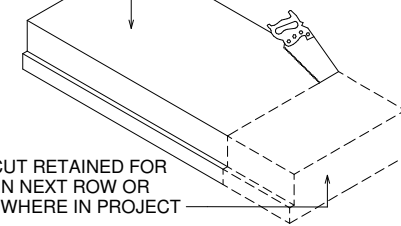


MUST BE CUT FROM FULL (540mm) PANEL
ONE SIDE TO BE USED AS STARTER
PANEL. CUT EDGE SHOWN IN RED TO BE
PLACED AGAINST WALL ON OPTIONAL
EDGE SUPPORT CLIPS



REMAINING SIDE TO BE
RETAINED AND USED AT
OPPOSITE END OF THE BAY
WHERE POSSIBLE, OR
ELSEWHERE IN THE PROJECT —

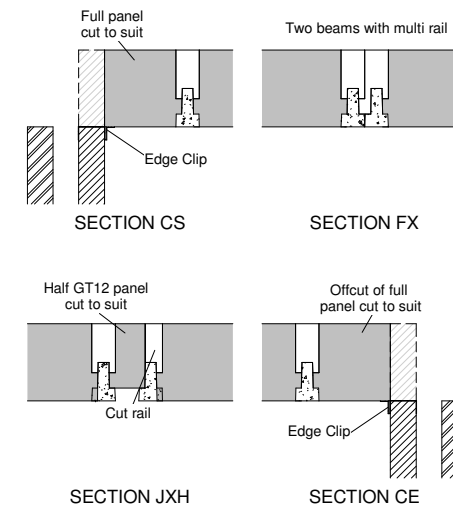
— PANELS SHOULD BE CUT TO SUIT USING MEASUREMENTS TAKEN ON SITE.



OFFCUT RETAINED FOR
USE IN NEXT ROW OR
ELSEWHERE IN PROJECT

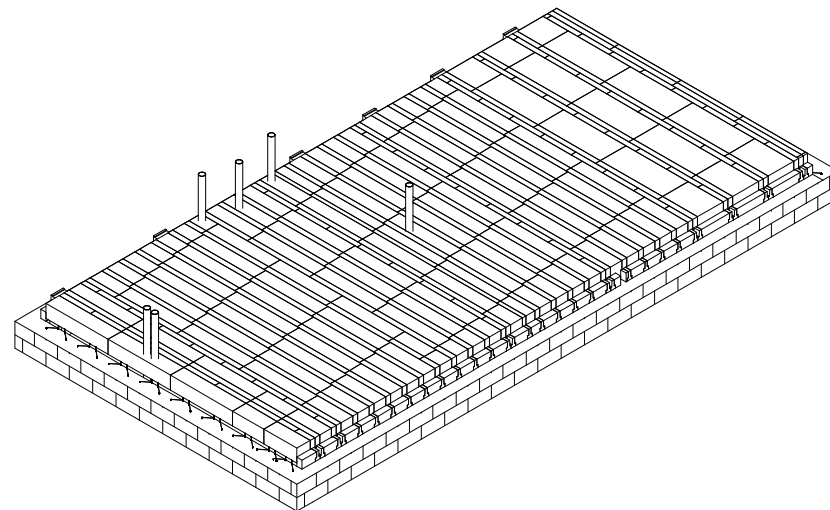
CUTS SHOULD NOT RESULT IN PANELS SMALLER THAN 300MM, AS THESE ARE NOT PERMITTED. EG. IF A 1000MM SECTION IS REQUIRED, IT SHOULD BE ACHIEVED BY CUTTING ONE PANEL TO 600MM AND ANOTHER TO 400MM. THIS AVOIDS CREATING AN UNUSABLE 200MM OFFCUT. EACH COMBINATION MUST ALWAYS INCLUDE ONE PANEL OF 600MM.

CUTTING TO SIZE FOR ROW



Joist Schedule			
Description	Joist Length	Bay Id	Count
150mm Floor Joist	5050	3	34


Vent flow rates achieved	
6450	mm ² Capacity
1984	mm ² /m P (1500mm ² /m MIN)
812	mm ² /m ² A (500mm ² /m ² MIN)



 Joist Start Layout Point
 Poly Start Layout Point

 150mm Joist

⊕ Service Hole Position

 Suggested Void Ventilator Position. Those with **V** graphic have Vertical Ext. Thru' vents by builder.

Closure Block	All closure blocks to be bedded. All internal bearing channels must be concrete filled before screed is applied. Shuttering may be required for GT12 and GT18.
---------------	--

 Starter Panel - Cut from **FULL PANEL** as indicated on design/section.

 End Panel - Cut from **FULL PANEL** or off cut of Starter Panel as indicated on design/section.

318 150mm Floor Joists with 270mm poly panel between (Poly).

Closure Blocks are only included for around the perimeter, as is highlighted on our design. If you would like additional Closure Blocks for internal walls, please contact Litecast.

PLEASE NOTE:
Sections should be used to determine panel type for cut rows and all edges are created using full (540mm) panels.

Section Details shown are auto generated and may not reflect situation on site.

PANELS ON THIS DESIGN ARE

GT11	Blue Label	Cut Panels GT12 (If Required)	Yellow Label
-------------	-------------------	---	---------------------

THERMAL VALUES

PERIMETER/AREA VALUE - 0.409
TARGET U VALUE - 0.11 ACTUAL U VALUE - 0.11

c	updated svp positions	RM	06/05/23
b	Additional vents added and repositioned as requested	DB	14/04/23
a	Design previously estimated, drawing produced to site specific plans	DB	01/04/23

TOTAL LENGTHS AND AREA		
<u>150mm - Length</u>	<u>225mm - Length</u>	<u>Floor Area</u>
171.700 m	0.000 m	47 m ²

DESIGN CRITERIA (WHERE APPLICABLE)

FINISHES - 1.8kN/m² 75mm Steel Fibre/Mesh Reinforced Concrete Screed
LIVE LOAD (LL) - Refer To Bay Tag For Loads
OTHER INFILLS - EPS Panel
PARTITIONS - 1.2kN/m² Non Load Bearing Stud
PARTITIONS - 3kN/m Non Load Bearing Block

HOUSE TYPE	Tillman (Semi)
------------	----------------

SITE ADDRESS
St Nicholas Park, Forster Park
Off North Road
Stevenage
SG1 4DE

 <p>Unit 1 Purley Chase Industrial Est. Pipers Lane, Nuneaton, CV10 0HG</p> <p>Tel : 02476 356161</p>	DRAWN BY ross@litecast.co.uk	DATE 03/04/2025
	DRG NO. 241714-42-GT11	REV C