

Window Schedule						
Ref	Frame Width	Frame Height	Int Block Opening	Comments	P1A - Glazing	PAS 24 - Locking
W01	1835	1640	1845		-	Yes
W02	1835	1640	1845		-	Yes
W03	710	1040	720	Obs	-	Yes
W04	1273	1190	1283		-	Yes
W05	1835	1040	1845	Esc	-	-
W06	1160	890	1170		-	-
W07	1835	1040	1845	Esc	-	-
W08	1835	1040	1845	Esc	-	-
W09	1273	1040	1283	Obs	-	-
W10	1835	1040	1845	Esc	-	-

REFER TO TM59 CALCULATION FOR OPENINGS REMOVING EXCESS HEAT. ALL BEDROOM WINDOWS DESIGNED TO 1.1M ABOVE FFL WITH A BUILD TOLERANCE +0/-100MM. WINDOWS WITH LOWER OPENING HEIGHTS ARE EXCLUDED FROM TM59 CALCULATION AND REQUIRED FOR MEANS OF ESCAPE.

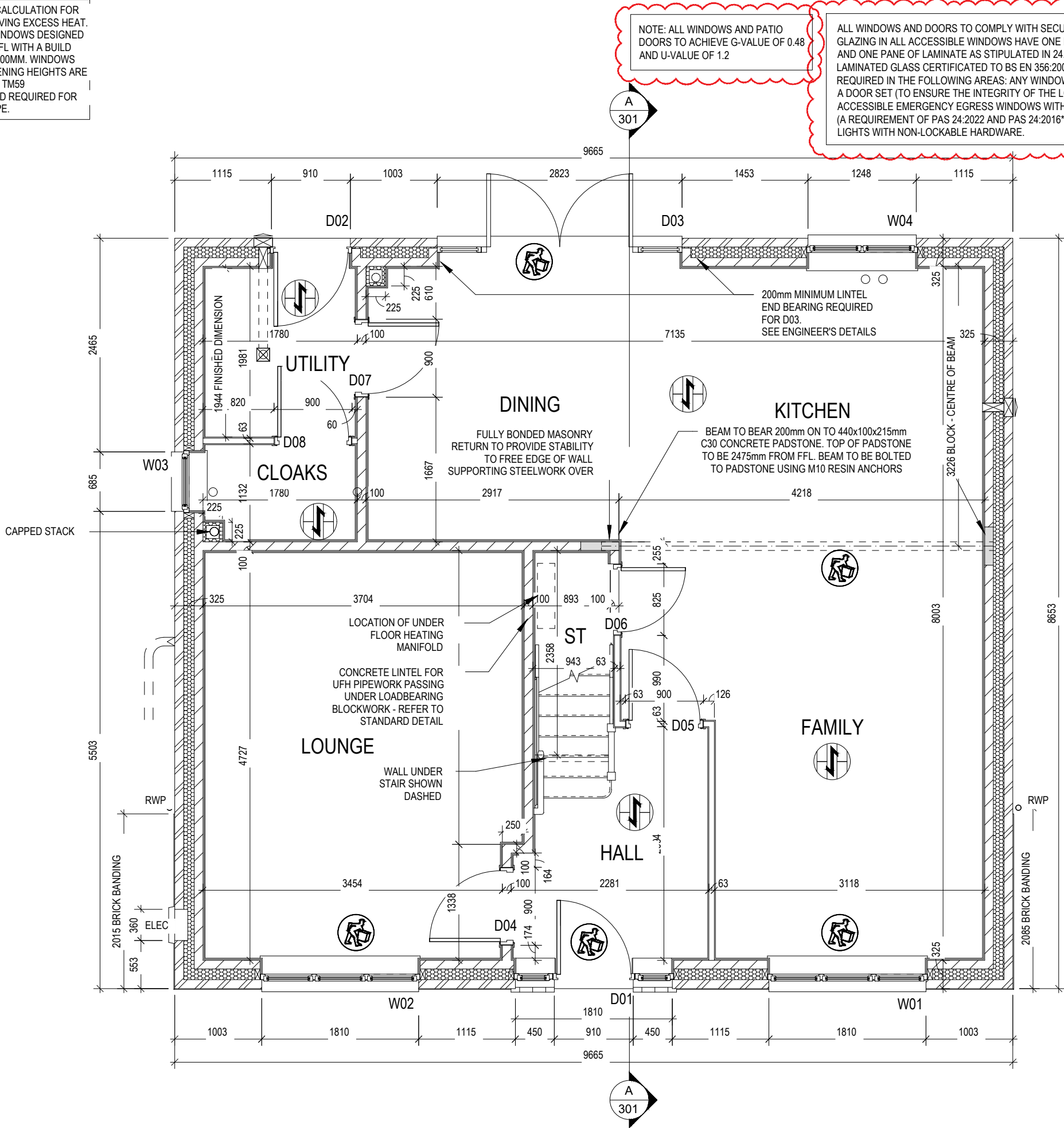
Door Schedule - Internal				
Ref	Width	Height	Fire Rating	Code
D04	900	2150		HID2
D05	900	2150		HID2
D06	825	2150		HID3
D07	900	2150		HID2
D08	900	2150		HID2
D09	825	2150		HID3
D10	825	2150		HID3
D11	825	2150		HID3
D12	825	2150		HID3
D13	825	2150		HID3
D14	825	2150		HID3
D15	825	2150		HID3

Door Schedule - External					
Ref	Frame Width	Height	Model	P1A - Glazing	PAS 24 - Locking
D01	1835	2250	HED01 - D01	Yes	Yes
D02	935	2250	HRD01	Yes	Yes
D03	2813	2250	HRD17	Yes	Yes

	LOCATION AND DIRECTION OF OPTIONAL FLOOR TILING
--	-------------------------------------------------

WALL LEGEND

WALL TYPE	SIZE (mm)	STRENGTH (N/mm²)	DENSITY (Kg/m³)	LAMBDA (ι)
BLOCKWORK	100	3.6	600	0.15
40dB STUDWORK	63 (88)	-	-	-



NOTE: ALL WINDOWS AND PATIO DOORS TO ACHIEVE G-VALUE OF 0.48 AND U-VALUE OF 1.2

ALL WINDOWS AND DOORS TO COMPLY WITH SECURE BY DESIGN - PAS 24:2022. GLAZING IN ALL ACCESSIBLE WINDOWS HAVE ONE PANE OF TOUGHENED GLASS AND ONE PANE OF LAMINATE AS STIPULATED IN 24.12 OF SBD HOMES 24 - LAMINATED GLASS CERTIFICATED TO BS EN 356:2000 CLASS P1A, OR ABOVE, IS REQUIRED IN THE FOLLOWING AREAS: ANY WINDOW LOCATED WITHIN 400MM OF A DOOR SET (TO ENSURE THE INTEGRITY OF THE LOCKING SYSTEM) EASILY ACCESSIBLE EMERGENCY EGRESS WINDOWS WITH NON-LOCKABLE HARDWARE (A REQUIREMENT OF PAS 24:2022 AND PAS 24:2016*) EASILY ACCESSIBLE ROOF LIGHTS WITH NON-LOCKABLE HARDWARE.

A 23.09.24 Glazing & SBD note added

Dwg No	DCC	Scale	Date
201	2	1 : 50	Jan 2023
Dwg Rev	A		

Structural Layout Ground Floor

Harrogate G SERIES



Window Schedule						
Ref	Frame Width	Frame Height	Int Block Opening	Comments	P1A - Glazing	PAS 24 - Locking
W01	1835	1640	1845		-	Yes
W02	1835	1640	1845		-	Yes
W03	710	1040	720	Obs	-	Yes
W04	1273	1190	1283		-	Yes
W05	1835	1040	1845	Esc	-	-
W06	1160	890	1170		-	-
W07	1835	1040	1845	Esc	-	-
W08	1835	1040	1845	Esc	-	-
W09	1273	1040	1283	Obs	-	-
W10	1835	1040	1845	Esc	-	-

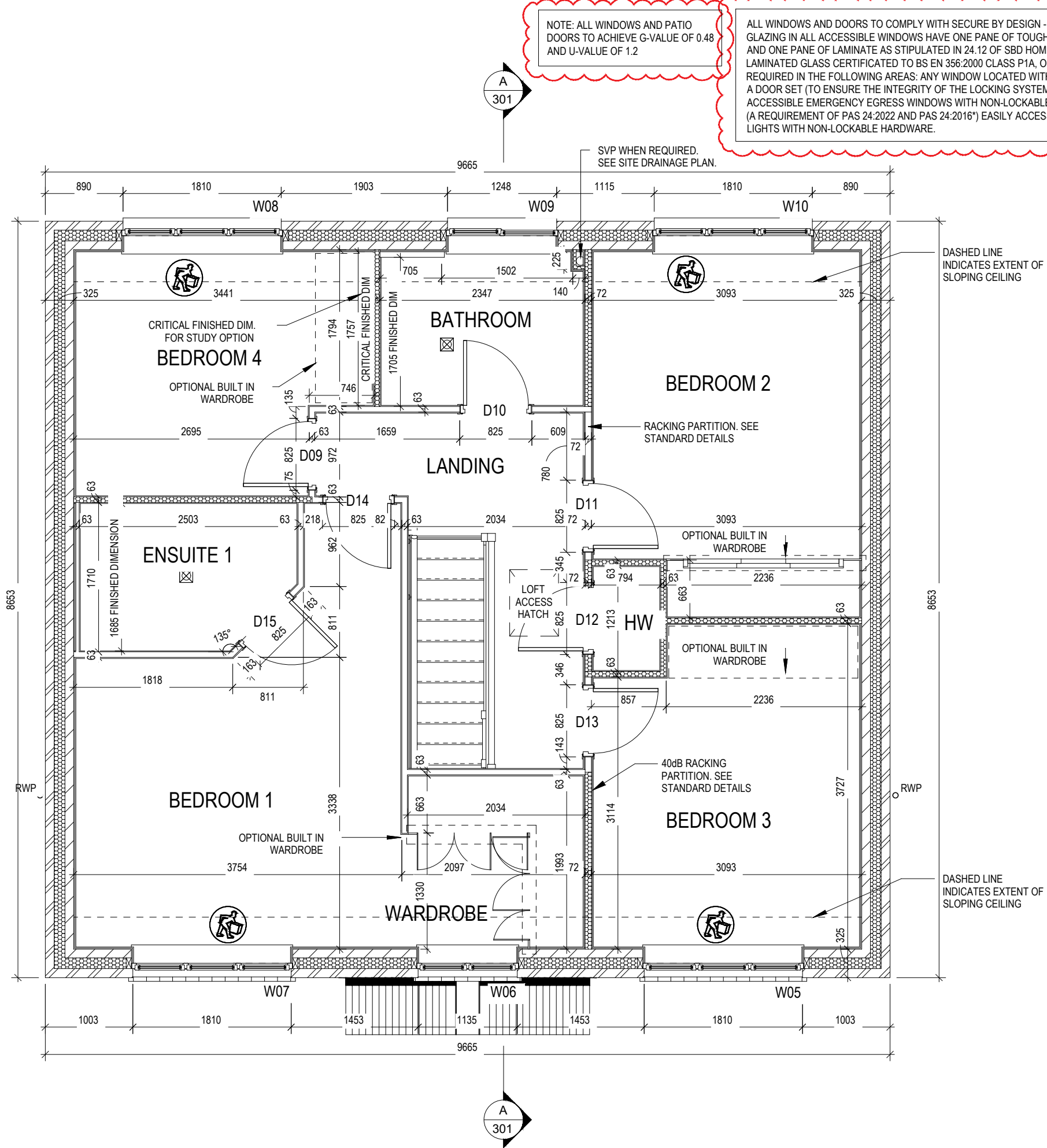
REFER TO TM59 CALCULATION FOR OPENINGS REMOVING EXCESS HEAT. ALL BEDROOM WINDOWS DESIGNED TO 1.1M ABOVE FFL WITH A BUILD TOLERANCE +/-100MM. WINDOWS WITH LOWER OPENING HEIGHTS ARE EXCLUDED FROM TM59 CALCULATION AND REQUIRED FOR MEANS OF ESCAPE.

Door Schedule - Internal				
Ref	Width	Height	Fire Rating	Code
D04	900	2150		HID2
D05	900	2150		HID2
D06	825	2150		HID3
D07	900	2150		HID2
D08	900	2150		HID2
D09	825	2150		HID3
D10	825	2150		HID3
D11	825	2150		HID3
D12	825	2150		HID3
D13	825	2150		HID3
D14	825	2150		HID3
D15	825	2150		HID3

Door Schedule - External					
Ref	Frame Width	Height	Model	P1A - Glazing	PAS 24 - Locking
D01	1835	2250	HED01 - D01	Yes	Yes
D02	935	2250	HRD01	Yes	Yes
D03	2813	2250	HRD17	Yes	Yes

WALL LEGEND

WALL TYPE	SIZE (mm)	STRENGTH (N/mm ²)	DENSITY (Kg/m ³)	LAMBDA (λ)
BLOCKWORK	100	3.6	600	0.15
40dB STUDWORK	63 (88)	-	-	-



Structural layout First Floor

Harrogate

Scale 1 : 50

DCC 2

Dwg No 202

Date Jan 2023

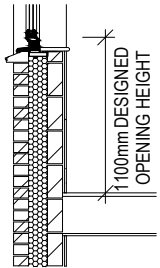
Dwg Rev A

A 23.09.24

Glazing & SBD note added

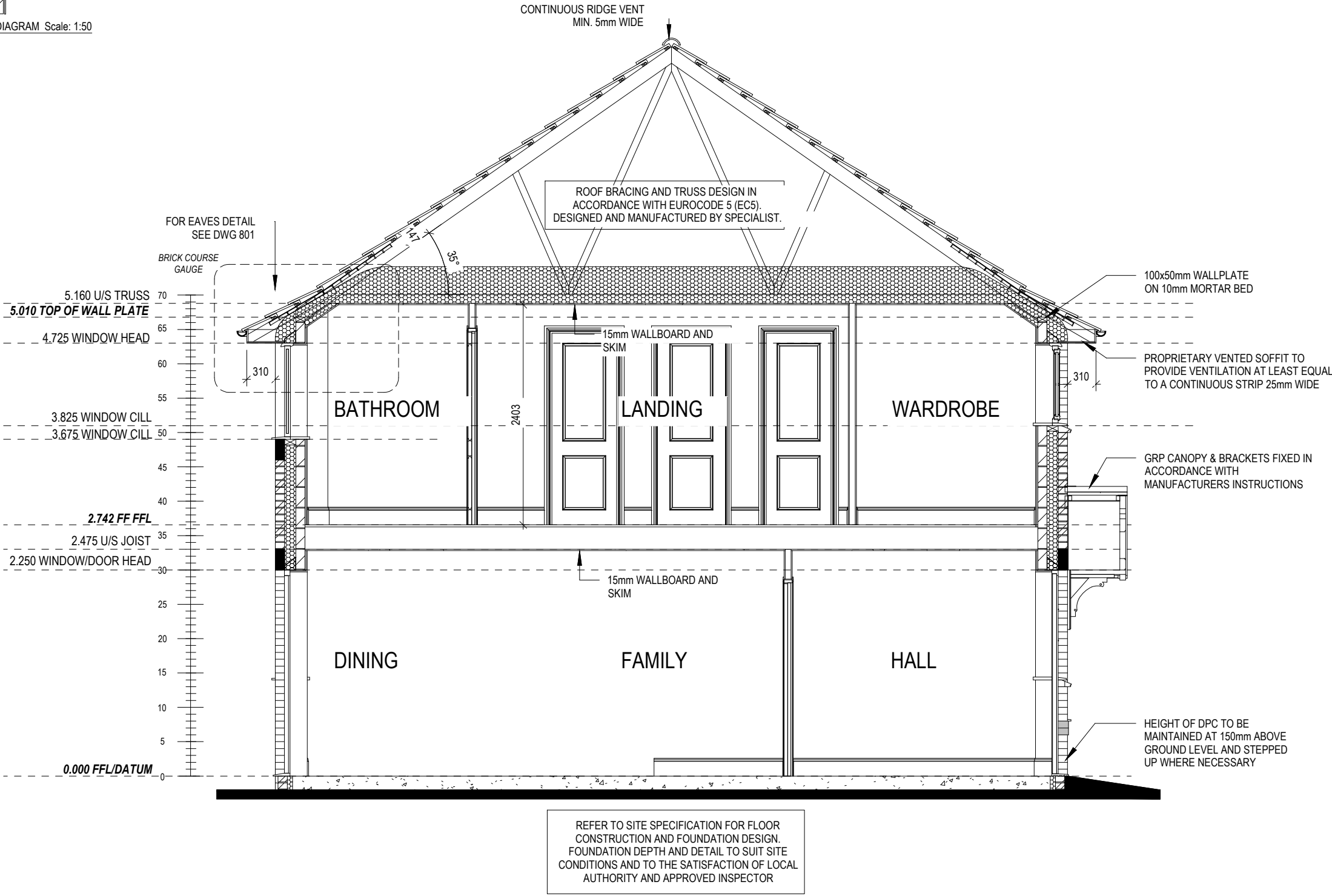
REDROW

This drawing must be read in conjunction with relevant Redrow specifications, standard details & structural calculations. All dimension are taken from face of Brick/Block & Studwork. This drawing is subject to copyright. Not Scale Off This Drawing



REFER TO TM59 CALCULATION FOR OPENINGS REMOVING EXCESS HEAT. ALL BEDROOM WINDOWS DESIGNED TO 1.1M ABOVE FFL WITH A BUILD TOLERANCE +0/-100MM. WINDOWS WITH LOWER OPENING HEIGHTS ARE EXCLUDED FROM TM59 CALCULATION AND REQUIRED FOR MEANS OF ESCAPE.

PART 'O' COMPLIANCE DIAGRAM Scale: 1:50



<div>Harrogate</div> <div>G SERIES</div>	Section A-A	Scale	DCC	Dwg No
		1 : 50	2	301
		Date		Dwg Rev
		Jan 2023		

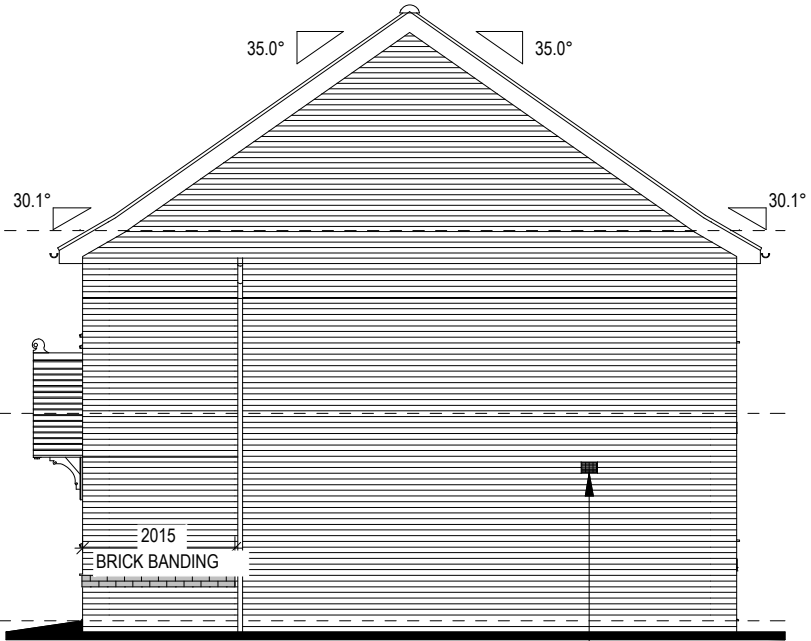
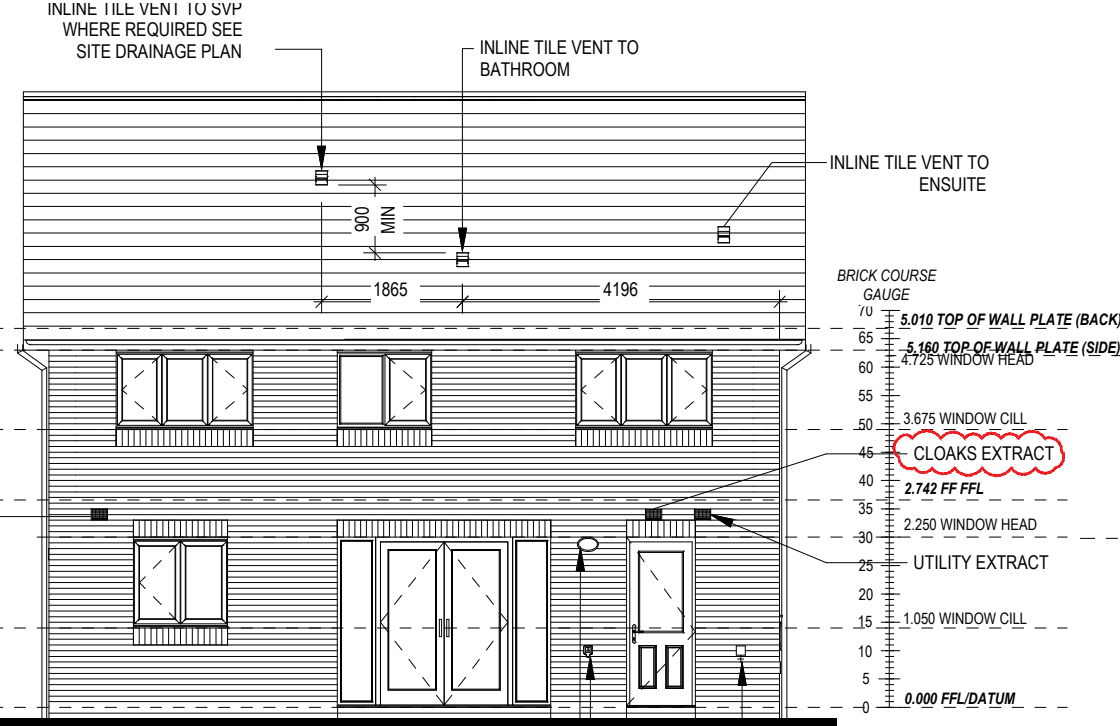
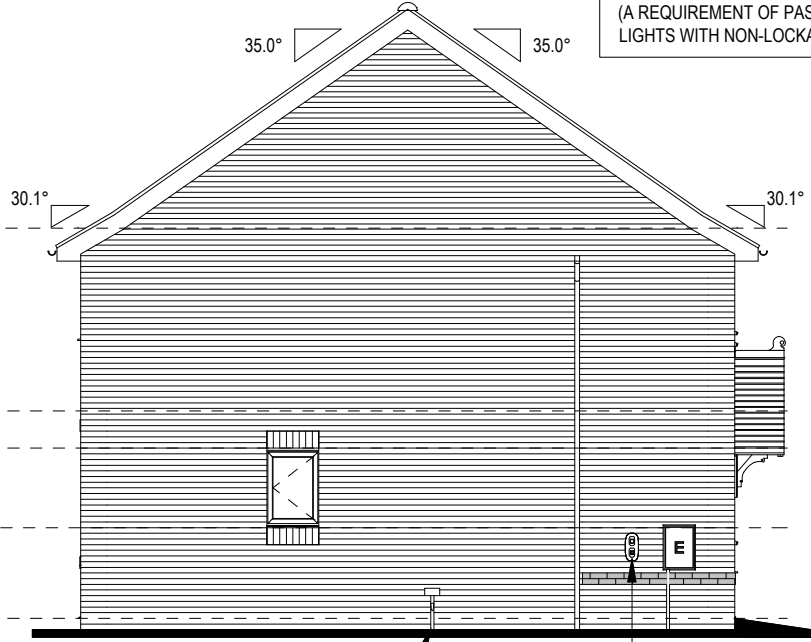


This drawing must be read in conjunction with relevant Redrow specifications, standard details & structural calculations. All dimension are taken from face of Brick/Block & Studwork. This drawing is subject to copyright. Not Scale Off This Drawing

REFER TO TM59 CALCULATION FOR OPENINGS REMOVING EXCESS HEAT. ALL BEDROOM WINDOWS DESIGNED TO 1.1M ABOVE FFL WITH A BUILD TOLERANCE +0/-100MM. WINDOWS WITH LOWER OPENING HEIGHTS ARE EXCLUDED FROM TM59 CALCULATION AND REQUIRED FOR MEANS OF ESCAPE.

NOTE: ALL WINDOWS AND PATIO DOORS TO ACHIEVE G-VALUE OF 0.48 AND U-VALUE OF 1.2

ALL WINDOWS AND DOORS TO COMPLY WITH SECURE BY DESIGN - PAS 24:2022. GLAZING IN ALL ACCESSIBLE WINDOWS HAVE ONE PANE OF TOUGHENED GLASS AND ONE PANE OF LAMINATE AS STIPULATED IN 24.12 OF SBD HOMES 24 - LAMINATED GLASS CERTIFICATED TO BS EN 356:2000 CLASS P1A, OR ABOVE, IS REQUIRED IN THE FOLLOWING AREAS: ANY WINDOW LOCATED WITHIN 400MM OF A DOOR SET (TO ENSURE THE INTEGRITY OF THE LOCKING SYSTEM) EASILY ACCESSIBLE EMERGENCY EGRESS WINDOWS WITH NON-LOCKABLE HARDWARE (A REQUIREMENT OF PAS 24:2022 AND PAS 24:2016*) EASILY ACCESSIBLE ROOF LIGHTS WITH NON-LOCKABLE HARDWARE.



Harrogate G SERIES	Elevations B1	Scale	DCC	Dwg No	Date
		1 : 100	2	401	
				Dwg Rev	
				B	
				A 23.09.24 Glazing & SBD note added B 05.11.24 Extract added to Cloaks & Kitchen	



This drawing must be read in conjunction with relevant Redrow specifications, standard details & structural calculations. All dimension are taken from face of Brick/Block & Studwork. This drawing is subject to copyright. Not Scale Off This Drawing

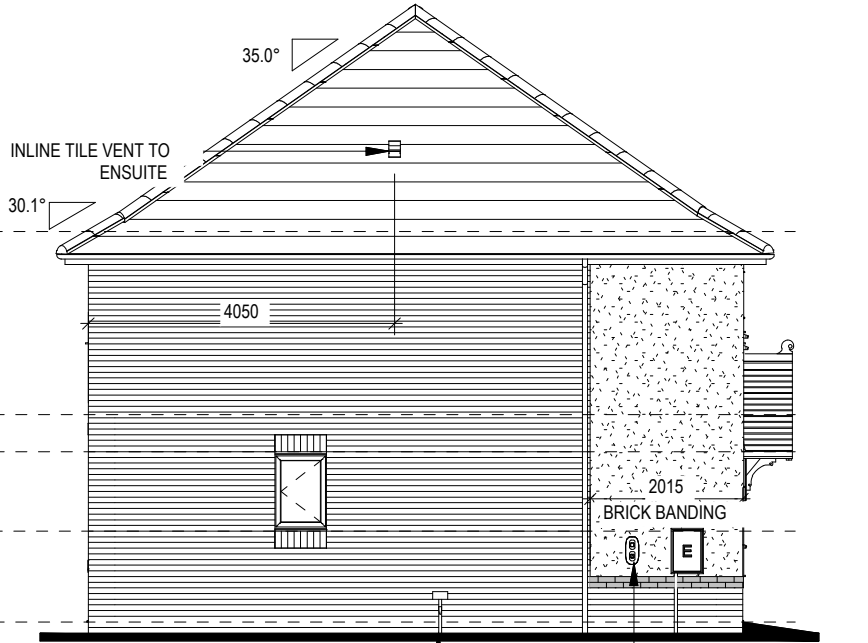
REFER TO TM59 CALCULATION FOR OPENINGS REMOVING EXCESS HEAT. ALL BEDROOM WINDOWS DESIGNED TO 1.1M ABOVE FFL WITH A BUILD TOLERANCE +0/-100MM. WINDOWS WITH LOWER OPENING HEIGHTS ARE EXCLUDED FROM TM59 CALCULATION AND REQUIRED FOR MEANS OF ESCAPE.

NOTE: ALL WINDOWS AND PATIO DOORS TO ACHIEVE G-VALUE OF 0.48 AND U-VALUE OF 1.2

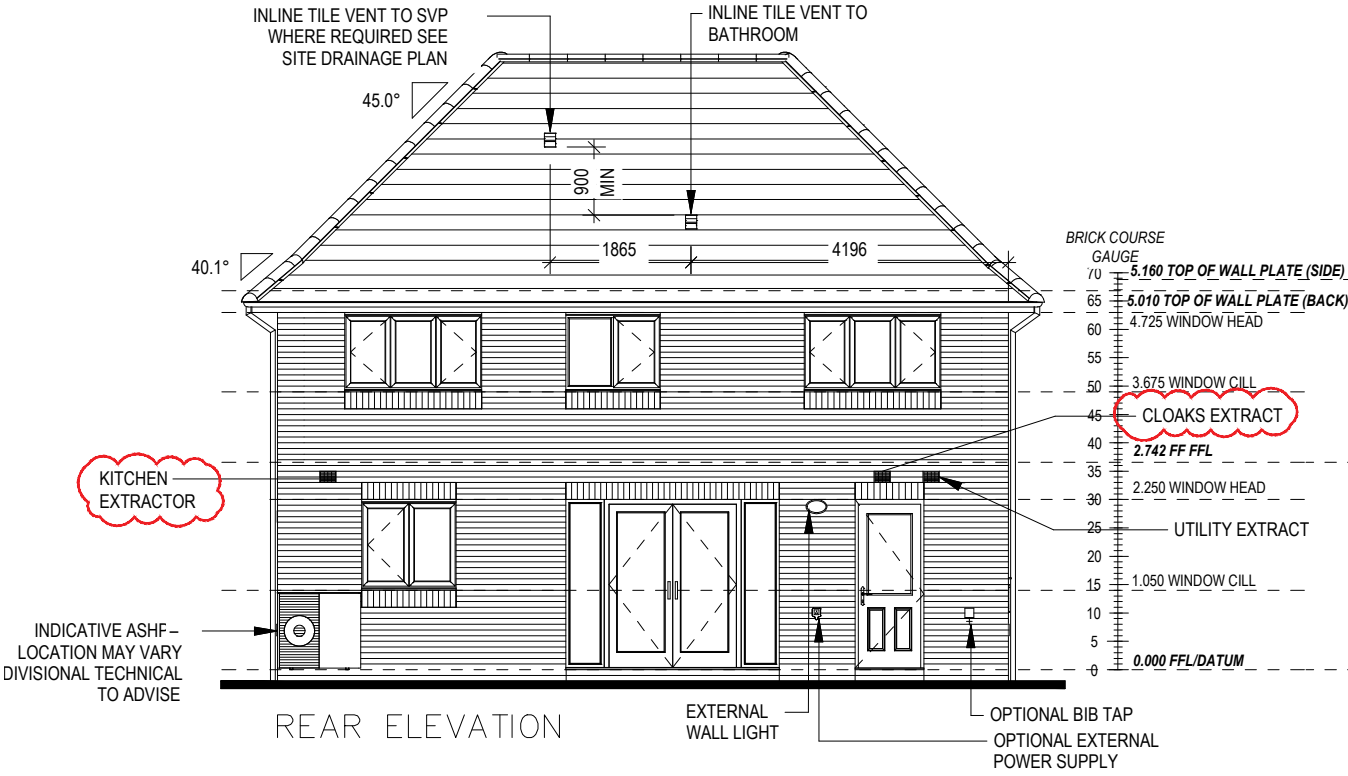
ALL WINDOWS AND DOORS TO COMPLY WITH SECURE BY DESIGN - PAS 24:2022. GLAZING IN ALL ACCESSIBLE WINDOWS HAVE ONE PANE OF TOUGHENED GLASS AND ONE PANE OF LAMINATE AS STIPULATED IN 24.12 OF SBD HOMES 24 - LAMINATED GLASS CERTIFICATED TO BS EN 356:2000 CLASS P1A, OR ABOVE, IS REQUIRED IN THE FOLLOWING AREAS: ANY WINDOW LOCATED WITHIN 400MM OF A DOOR SET (TO ENSURE THE INTEGRITY OF THE LOCKING SYSTEM) EASILY ACCESSIBLE EMERGENCY EGRESS WINDOWS WITH NON-LOCKABLE HARDWARE (A REQUIREMENT OF PAS 24:2022 AND PAS 24:2016*) EASILY ACCESSIBLE ROOF LIGHTS WITH NON-LOCKABLE HARDWARE.



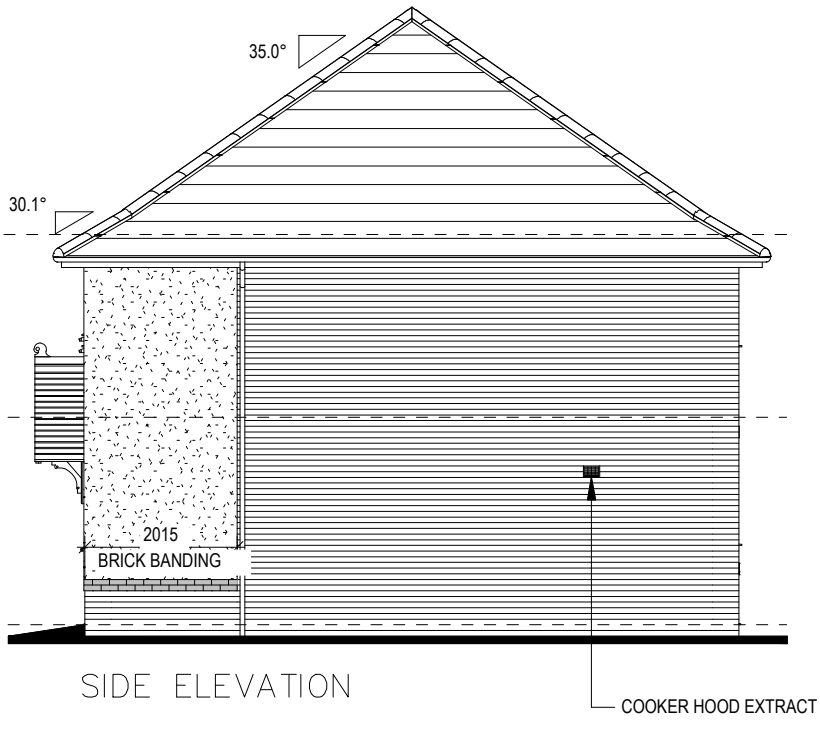
FRONT ELEVATION



SIDE ELEVATION



REAR ELEVATION



SIDE ELEVATION

A 23.09.24 Glazing & SBD note added
B 05.11.24 Extract added to Cloaks & Kitchen

Dwg No
402

DCC
2

Scale
1 : 100

Date
Jan 2023

Elevations A1

Harrogate

G SERIES

REDROW

This drawing must be read in conjunction with relevant Redrow specifications, standard details & structural calculations. All dimensions are taken from face of Brick/Block & Studwork. This drawing is subject to copyright. Not Scale Off This Drawing

STAIRS SPECIFICATION
FLOOR - FLOOR = 2742mm
RISE = 13No. @ 210.9mm (220mm Max)
GOING = 235mm (220mm Min)
STRING - STRING = SEE DWG
PITCH = 41.9°
STRINGER = 32 x 250mm
NEWEL POST = 92 x 92mm

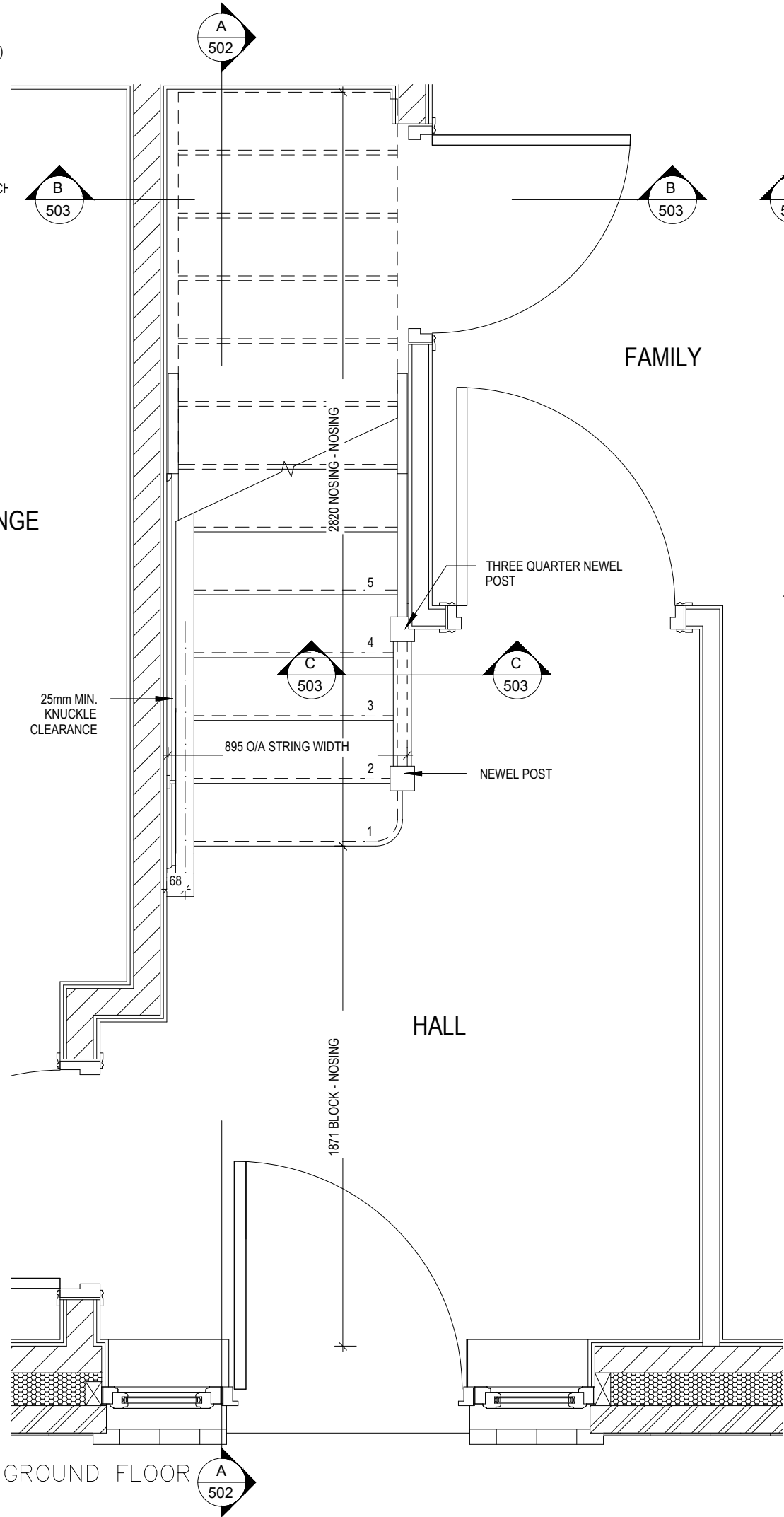
HANDRAIL 900mm ABOVE NOSING LINE
BALUSTRADE 900mm ABOVE LANDING FLOOR LEVEL
VERTICAL BALUSTERS 99mm MAX CLEAR BETWEEN EACH
WHERE WALL MOUNTED HANDRAILS ARE INSTALLED,
ENDS ARE TO BE RETURNED INTO WALL AND CORNERS
ROUNDED

LOUNGE

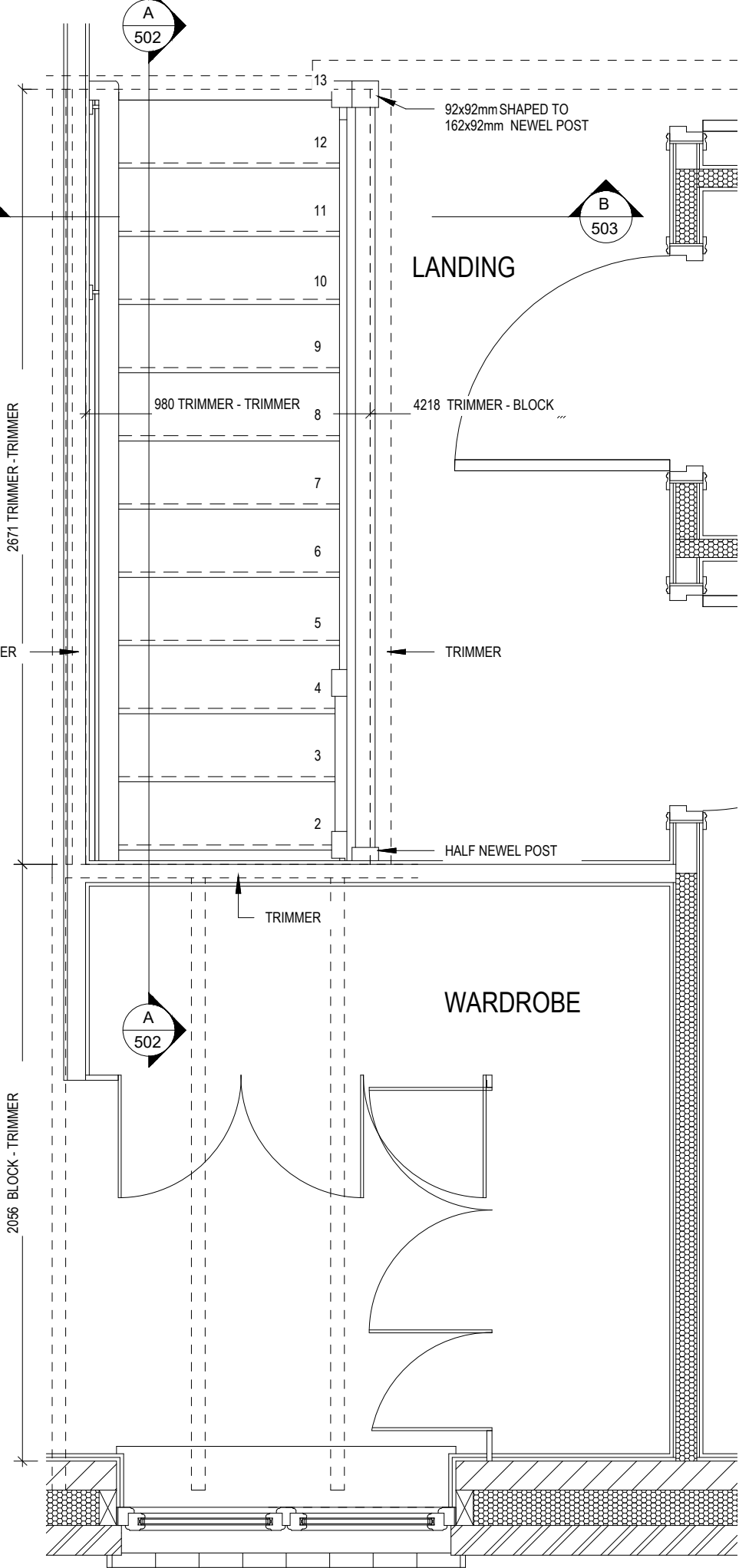
FAMILY

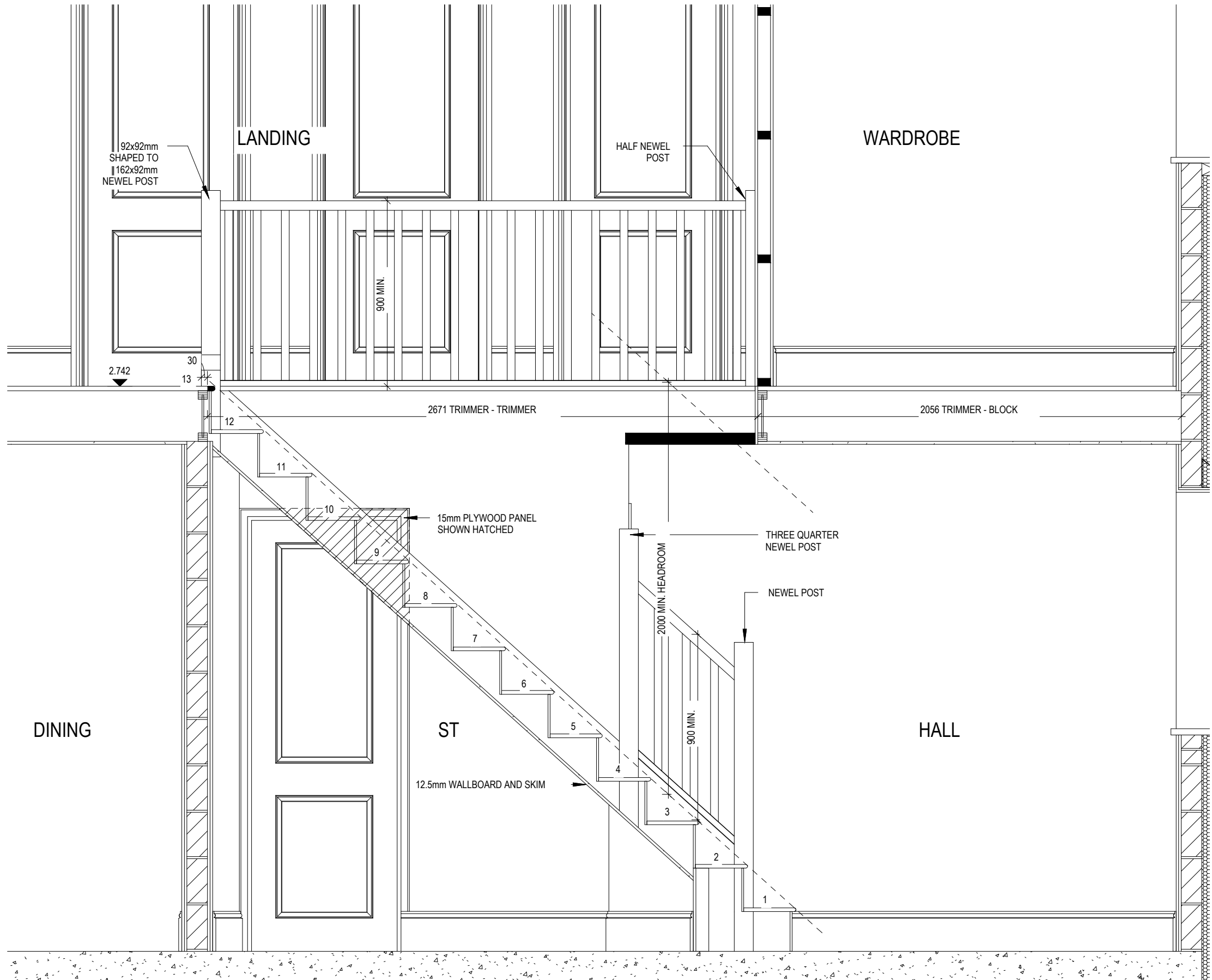
HALL

GROUND FLOOR




FIRST FLOOR

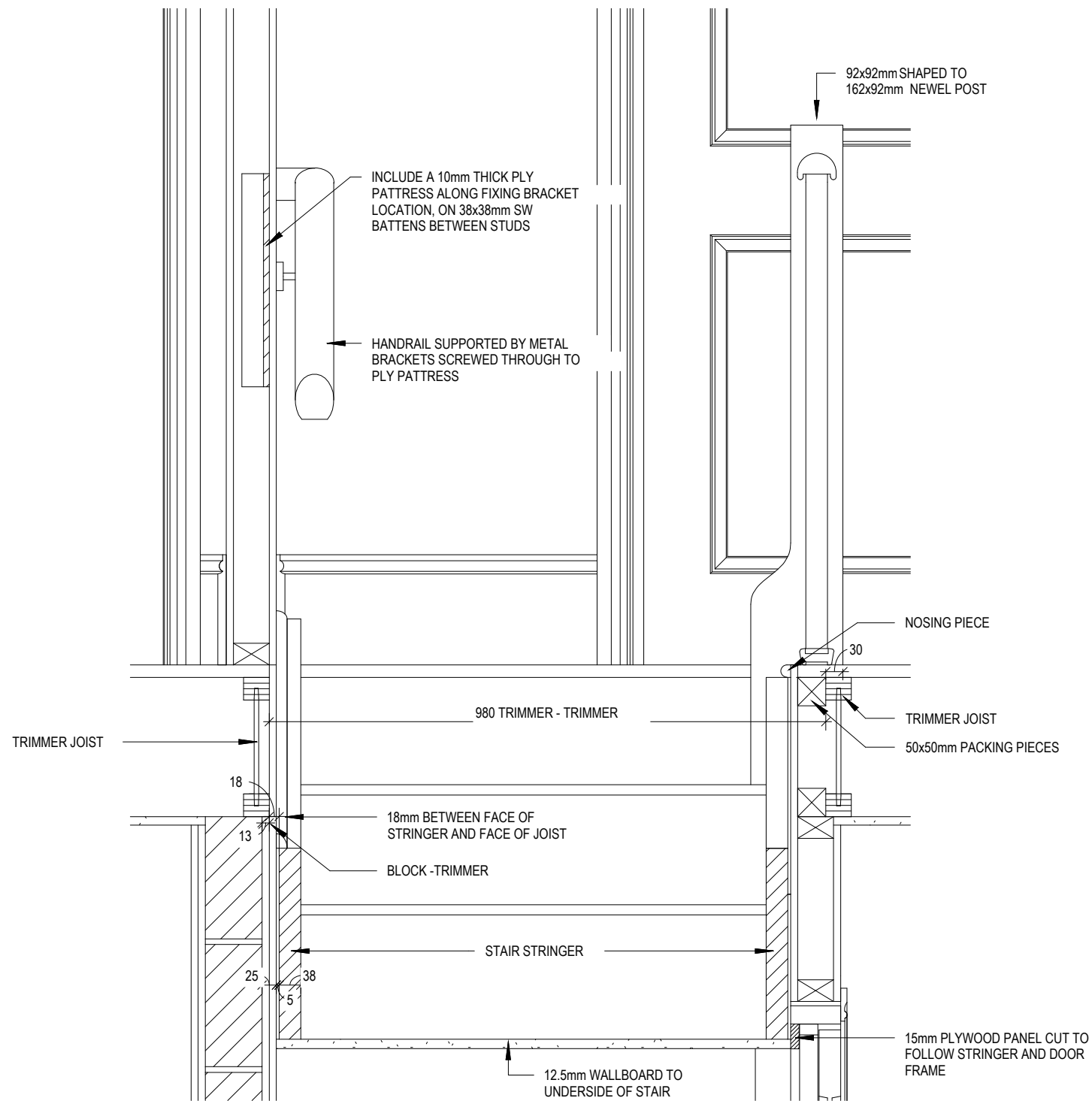




SECTION A— A

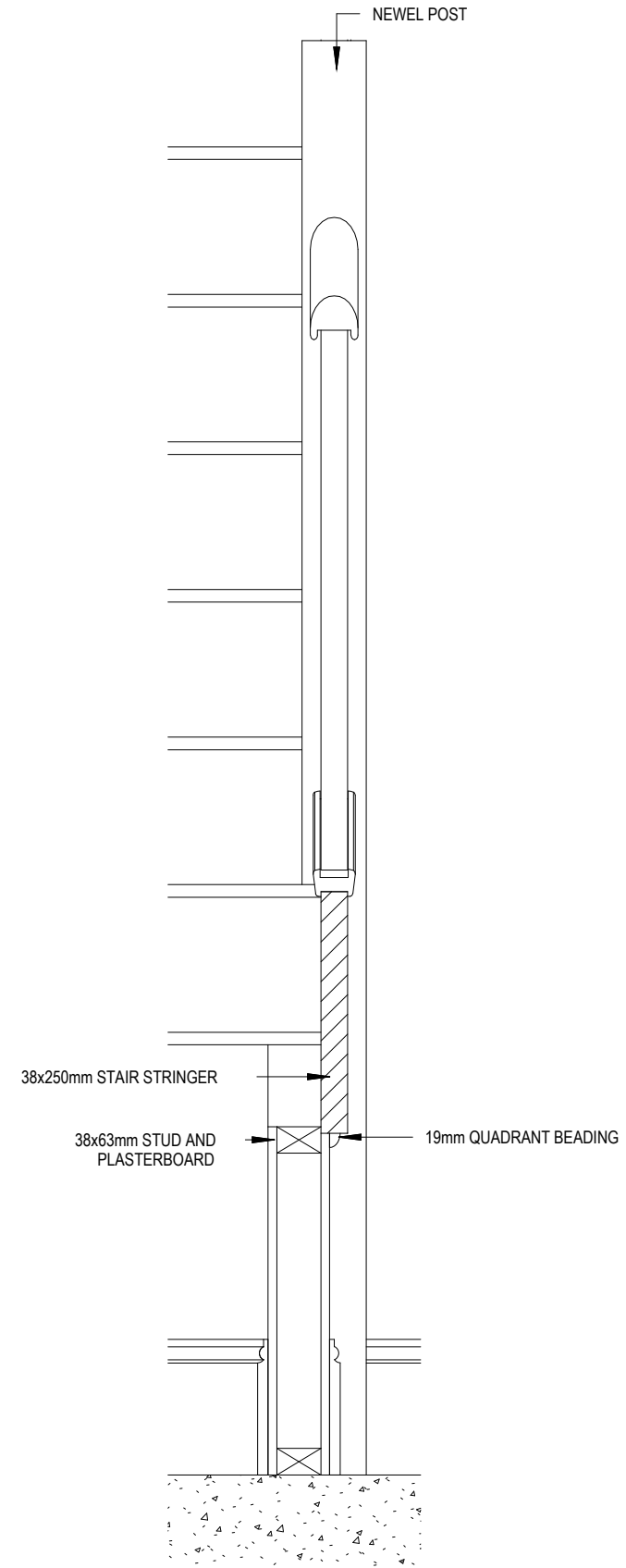
 Harrogate G SERIES	Staircase Details 2 of 3		Scale 1 : 20	DCC 2	Dwg No 502
			Date Jan 2023		Dwg Rev

This drawing must be read in conjunction with relevant Redrow specifications, standard details & structural calculations. All dimension are taken from face of Brick/Block & Studwork. This drawing is subject to copyright. Not Scale Off This Drawing



SECTION B-B

Scale: 1 : 10



SECTION C-C

Scale: 1 : 10

Harrogate
G SERIES

Staircase Details 3 of 3

Scale
1 : 10

DCC
2

Dwg No
503

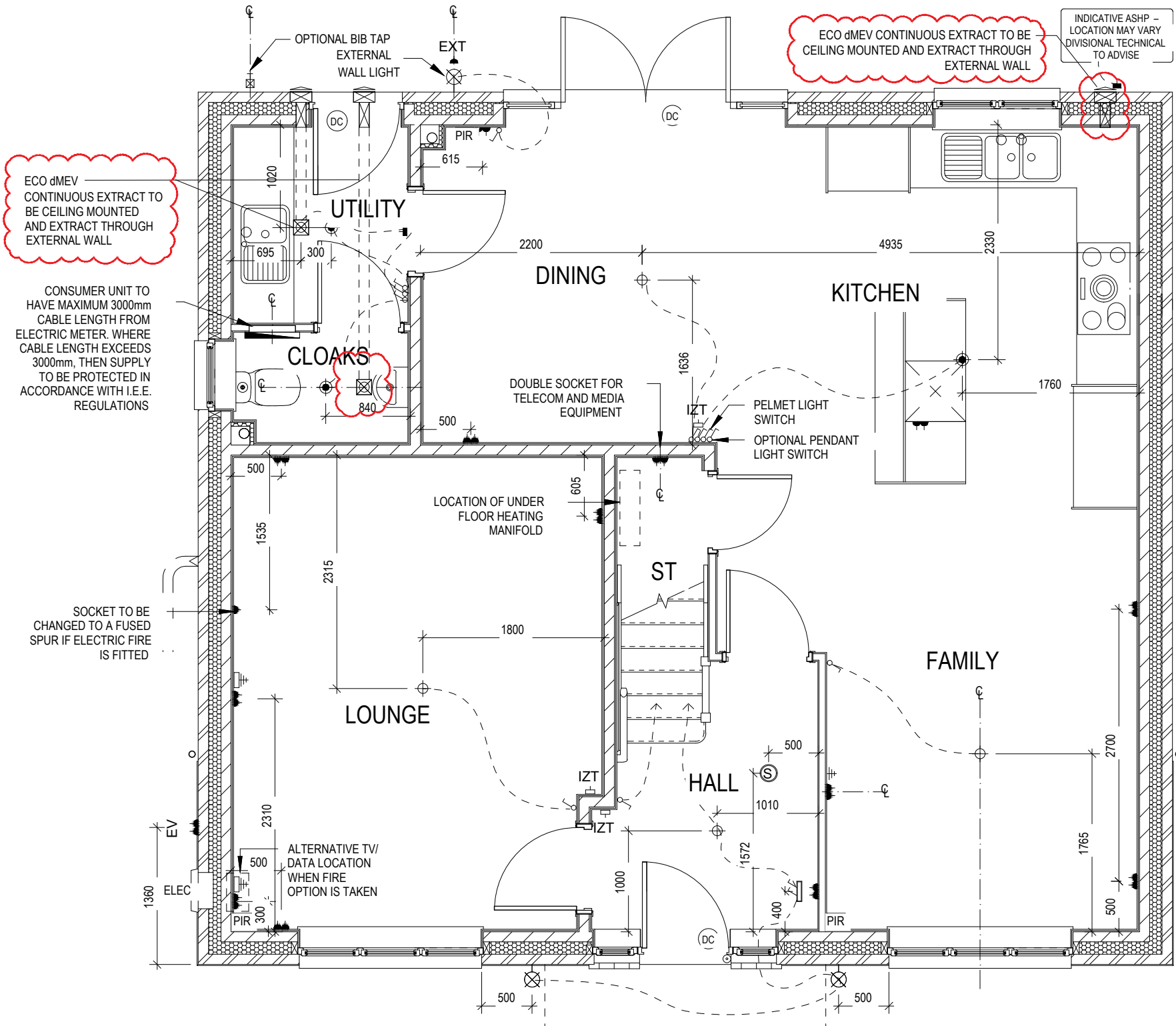
Date
Jan 2023

Dwg Rev



ELECTRICAL LEGEND

- PENDANT TYPE LIGHT FITTING
- BATTEN HOLDER LIGHT FITTING
- SINGLE S/W SOCKET OUTLET (LOW LEVEL)
- DOUBLE S/W SOCKET OUTLET (FILLED AT LOW LEVEL, CLEAR AT HIGH LEVEL)
- DOUBLE S/W SOCKET OUTLET WITH DOUBLE USB SOCKET (FILLED AT LOW LEVEL, CLEAR AT HIGH LEVEL)
- ELECTRIC VEHICLE CHARGE POINT (SEE SITE SPECIFICATION)
- EXTERNAL POWER SUPPLY (OPTIONAL)
- FUSED OUTLET (IMMERSION)
- ISOLATOR SWITCH
- SINGLE SWITCH, DOUBLE SWITCH, TRIPLE SWITCH
- NOTE: WHERE MULTIPLE SWITCHES ARE INDICATED TOGETHER THESE ARE TO BE SWITCHED ON ONE SINGLE PLATE NOT ON MULTIPLE PLATES.
- COMBINED T.V., SATELLITE AND DATA POINT WITH OPTIONAL HIGH LEVEL MOUNT
- T.V. POINT WITH OPTIONAL DATA POINT AND OPTIONAL HIGH LEVEL MOUNT
- OPTIONAL T.V. POINT WITH OPTIONAL DATA POINT AND OPTIONAL HIGH LEVEL MOUNT
- DATA POINT
- SMOKE DETECTOR
- HEAT DETECTOR
- SHAVER SOCKET
- ROOM THERMOSTAT
- INDIVIDUAL ZONE THERMOSTAT
- PROGRAMMER AND HOT WATER TIMER
- PROGRAMMABLE THERMOSTAT
- EXTERNAL WALL LIGHT FITTING WITH INTEGRAL DUSK TO DAWN SENSOR
- EXTERNAL SURFACE MOUNTED BULKHEAD LIGHT FITTING TO CANOPY
- DOOR BELL PUSH BUTTON IN FRAME
- PV METER SWITCH (SITE UPGRADE/CUSTOMER OPTION)
- SEMI RECESSED CONSUMER UNIT
- DUSK TO DAWN SENSOR
- COMMS ENTRY POINT WITH SLOW RADIUS BEND
- COMBINATION WALL MOUNTED ELECTRICAL DEVICES (REFER TO STD DETAIL), CONSISTING:
- DOOR BELL CHIME
- ALARM KEYPAD (CUSTOMER OPTION)
- DOUBLE LIGHT SWITCH
- BANK OF SWITCHES
- PASSIVE INFRA-RED DETECTOR TO BE FITTED 2.4m MAX ABOVE FFL (CUSTOMER OPTION)
- DOOR CONTACT (CUSTOMER OPTION)



Harrogate
G SERIES

Services Layout Ground Floor

Dwg No

DCC

Scale

Date

A 23.09.24

2

1 : 50

Jan 2023

Ext light note updated

Dwg Rev

Extract added to Cloaks & Kitchen

B

Harrogate

G SERIES

Services Layout Ground Floor

Dwg No

DCC

Scale

Date

A 23.09.24

2

1 : 50

Jan 2023

Ext light note updated

Dwg Rev

Extract added to Cloaks & Kitchen

B

Harrogate

G SERIES

Services Layout Ground Floor

Dwg No

DCC

Scale

Date

A 23.09.24

2

1 : 50

Jan 2023

Ext light note updated

Dwg Rev

Extract added to Cloaks & Kitchen

B

This drawing must be read in conjunction with relevant Redrow specifications, standard details & structural calculations. All dimensions are taken from face of Brick/Block & Studwork. This drawing is subject to copyright. Not Scale Off This Drawing

PENDANT TYPE LIGHT FITTING

BATTEN HOLDER LIGHT FITTING

SINGLE S/W SOCKET OUTLET (LOW LEVEL)

DOUBLE S/W SOCKET OUTLET (FILLED AT LOW LEVEL, CLEAR AT HIGH LEVEL)

DOUBLE S/W SOCKET OUTLET WITH DOUBLE USB SOCKET (FILLED AT LOW LEVEL, CLEAR AT HIGH LEVEL)

ELECTRIC VEHICLE CHARGE POINT (SEE SITE SPECIFICATION)

EXTERNAL POWER SUPPLY (OPTIONAL)

FUSED OUTLET (IMMERSION)

ISOLATOR SWITCH

SINGLE SWITCH, DOUBLE SWITCH, TRIPLE SWITCH

NOTE: WHERE MULTIPLE SWITCHES ARE INDICATED TOGETHER THESE ARE TO BE SWITCHED ON ONE SINGLE PLATE NOT ON MULTIPLE PLATES.

COMBINED T.V., SATELLITE AND DATA POINT WITH OPTIONAL HIGH LEVEL MOUNT

T.V. POINT WITH OPTIONAL DATA POINT AND OPTIONAL HIGH LEVEL MOUNT

OPTIONAL T.V. POINT WITH OPTIONAL DATA POINT AND OPTIONAL HIGH LEVEL MOUNT

DATA POINT

SMOKE DETECTOR

HEAT DETECTOR

SHAVER SOCKET

ROOM THERMOSTAT

INDIVIDUAL ZONE THERMOSTAT

PROGRAMMER AND HOT WATER TIMER

PROGRAMMABLE THERMOSTAT

EXTERNAL WALL LIGHT FITTING WITH INTEGRAL DUSK TO DAWN SENSOR

EXTERNAL SURFACE MOUNTED BULKHEAD LIGHT FITTING TO CANOPY

DOOR BELL PUSH BUTTON IN FRAME

PV METER SWITCH (SITE UPGRADE/CUSTOMER OPTION)

SEMI RECESSED CONSUMER UNIT

DUSK TO DAWN SENSOR

COMMS ENTRY POINT WITH SLOW RADIUS BEND

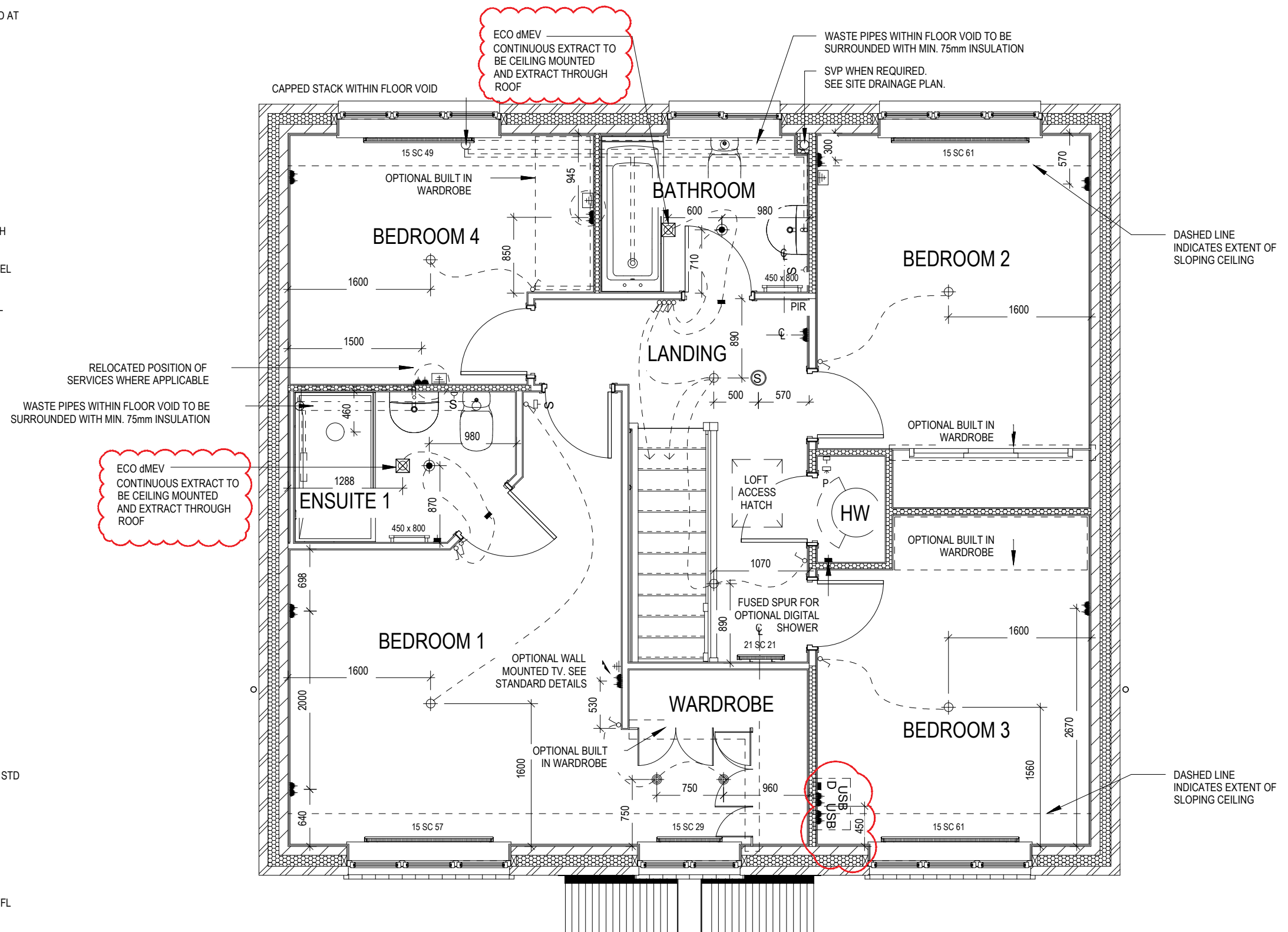
COMBINATION WALL MOUNTED ELECTRICAL DEVICES (REFER TO STD DETAIL),
CONSISTING:

- DOOR BELL CHIME
- ALARM KEYPAD (CUSTOMER OPTION)
- DOUBLE LIGHT SWITCH

BANK OF SWITCHES

PASSIVE INFRA-RED DETECTOR TO BE FITTED 2.4m MAX ABOVE FFL (CUSTOMER OPTION)

DOOR CONTACT (CUSTOMER OPTION)



Harrogate



ELECTRICAL LEGEND

- ISOLATOR SWITCH
- UFH

OPTIONAL ELECTRIC UNDER FLOOR HEATING WITH CONTROLLER AND STAT
- ⌋

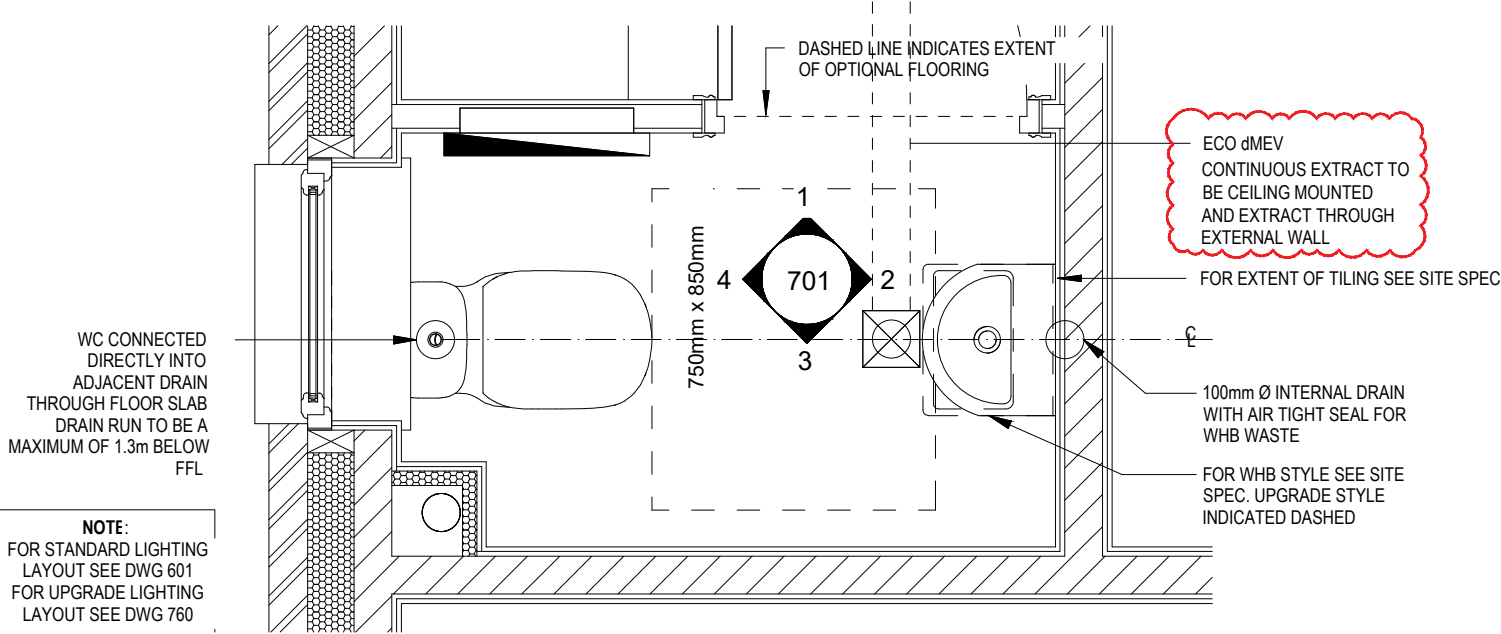
SINGLE SWITCH
- ⌋⌋

DOUBLE SWITCH
- ⌋⌋⌋

TRIPLE SWITCH
- NOTE: WHERE MULTIPLE SWITCHES ARE INDICATED TOGETHER THESE ARE TO BE SWITCHED ON ONE SINGLE PLATE NOT ON MULTIPLE PLATES.
- S

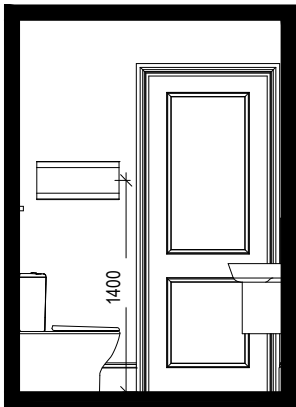
SHAVR SOCKET
- Di

OPTIONAL DIGITAL SHOWER SWITCH



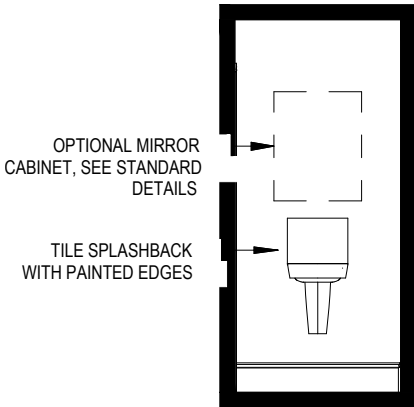
CLOAKS LAYOUT

Scale: 1 : 20

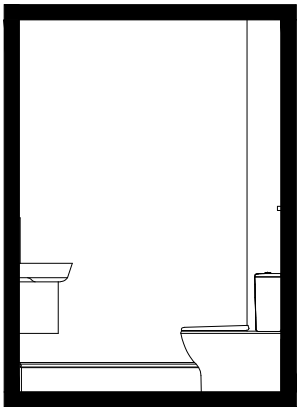


VIEW 1

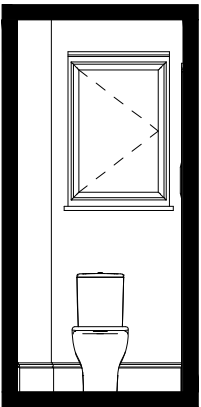
Scale: 1 : 50



VIEW 2



VIEW 3





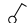

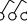
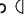

VIEW 4

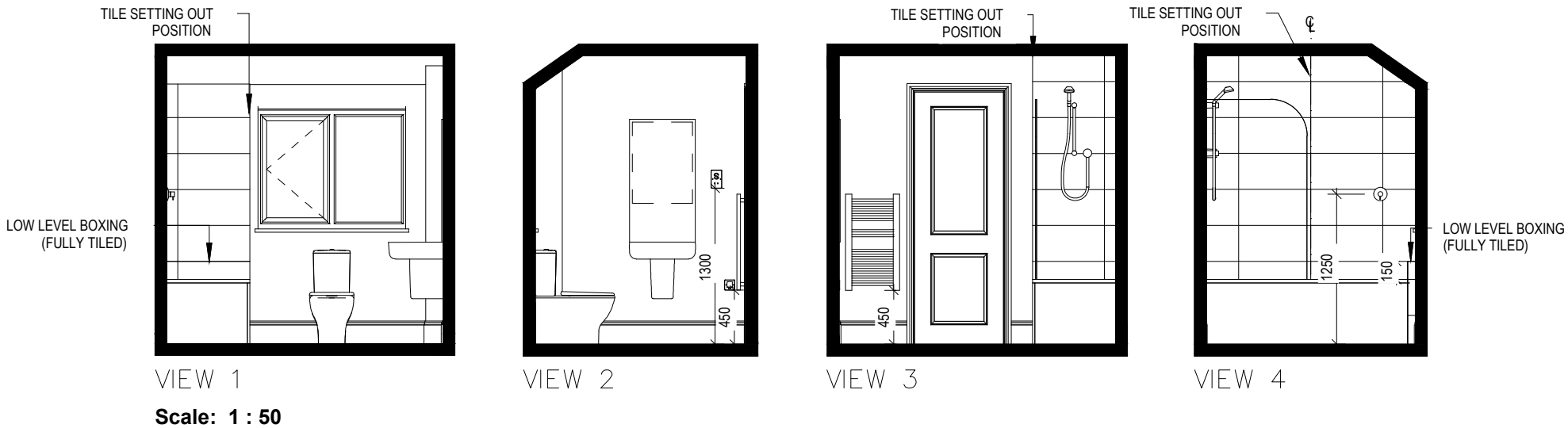
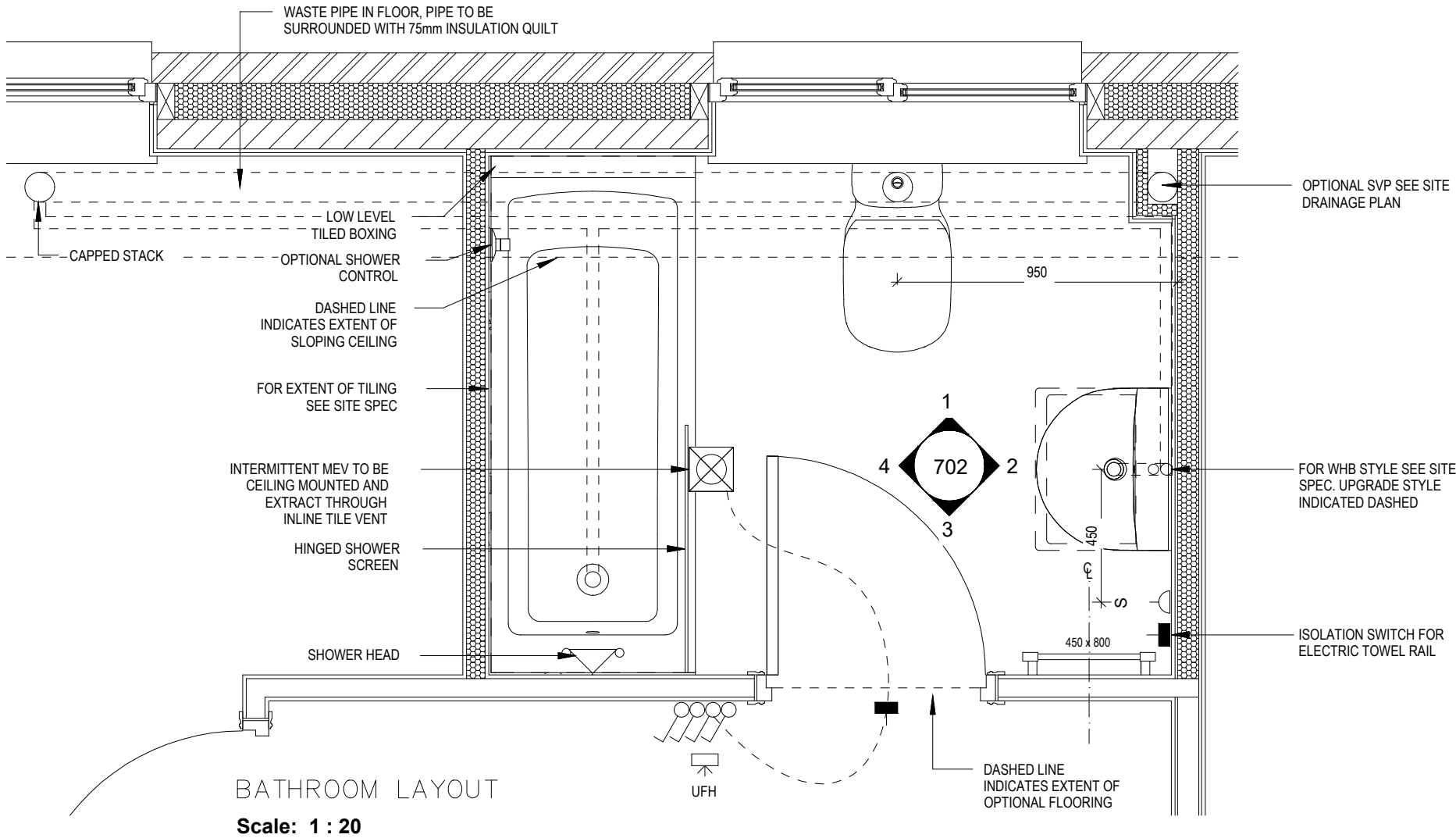
Harrogate G SERIES	Cloaks Details			A 05.11.24 Extract added to Cloaks	
	Scale	DCC	Dwg No	Dwg Rev	
	As indicated Date Jan 2023	2	701	A	




This drawing must be read in conjunction with relevant Redrow specifications, standard details & structural calculations. All dimension are taken from face of Brick/Block & Studwork. This drawing is subject to copyright. Not Scale Off This Drawing

ELECTRICAL LEGEND

-  ISOLATOR SWITCH
-  OPTIONAL ELECTRIC UNDER FLOOR HEATING WITH CONTROLLER AND STAT
-  SINGLE SWITCH
-  DOUBLE SWITCH
-  TRIPLE SWITCH
- NOTE: WHERE MULTIPLE SWITCHES ARE INDICATED TOGETHER THESE ARE TO BE SWITCHED ON ONE SINGLE PLATE NOT ON MULTIPLE PLATES.
-  SHAVER SOCKET
-  OPTIONAL DIGITAL SHOWER SWITCH



	Harrogate G SERIES	Bathroom Details		Dwg No 702
		DCC 2	Dwg Rev	
		Scale AS indicated	Date Jan 2023	

ELECTRICAL LEGEND

- ISOLATOR SWITCH
- UFH

OPTIONAL ELECTRIC UNDER FLOOR HEATING WITH CONTROLLER AND STAT
- ⌋

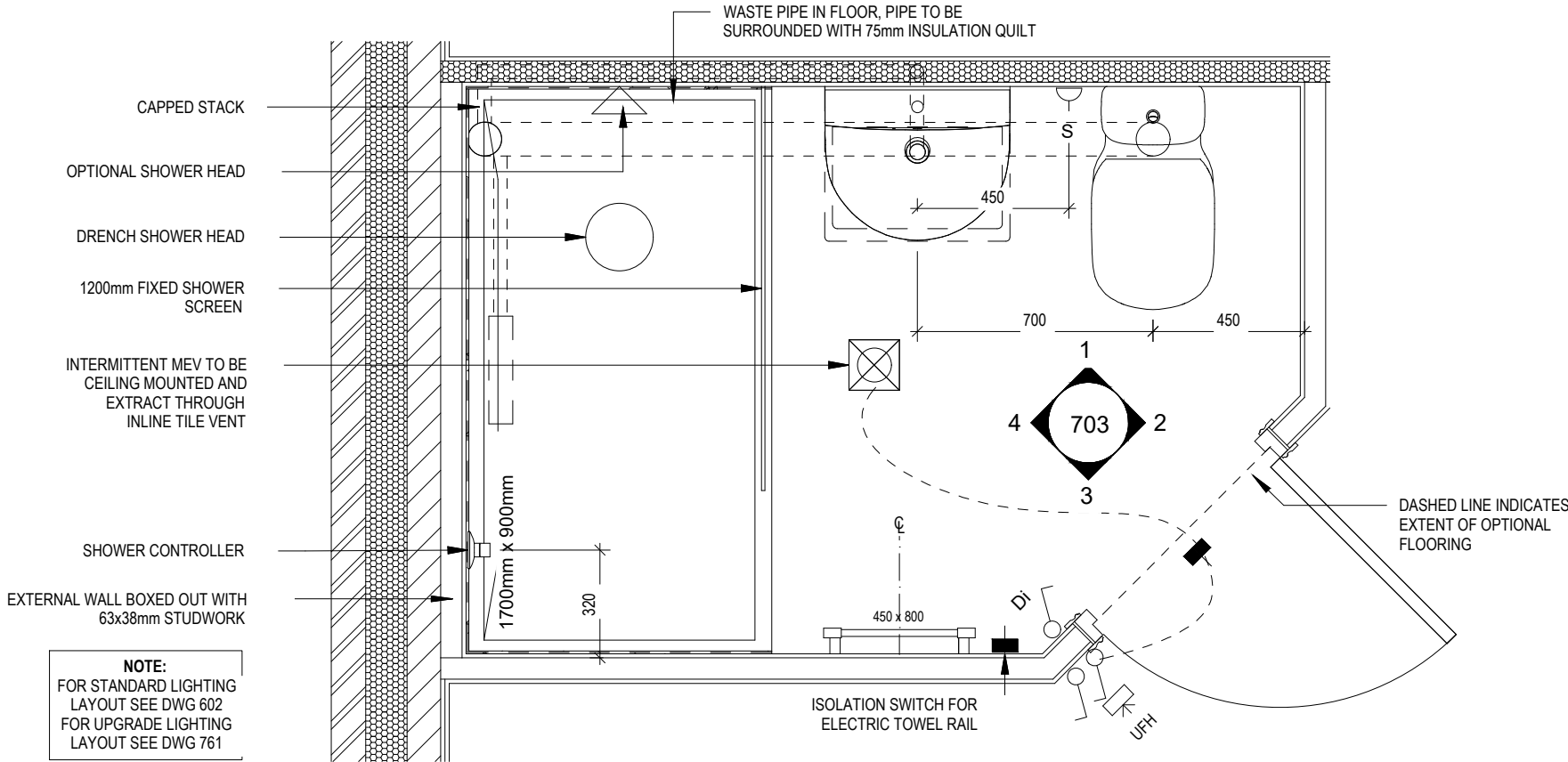
SINGLE SWITCH
- ⌋⌋

DOUBLE SWITCH
- ⌋⌋⌋

TRIPLE SWITCH
- NOTE: WHERE MULTIPLE SWITCHES ARE INDICATED TOGETHER THESE ARE TO BE SWITCHED ON ONE SINGLE PLATE NOT ON MULTIPLE PLATES.
- ⌋⌋

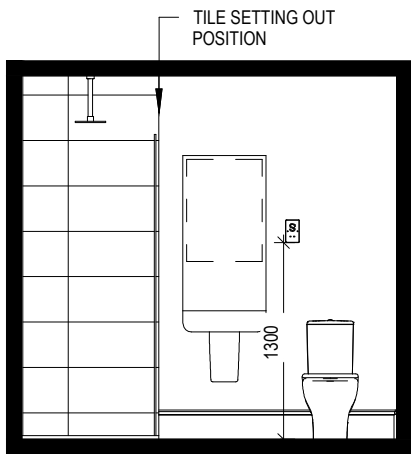
SHAVER SOCKET
- Di

OPTIONAL DIGITAL SHOWER SWITCH



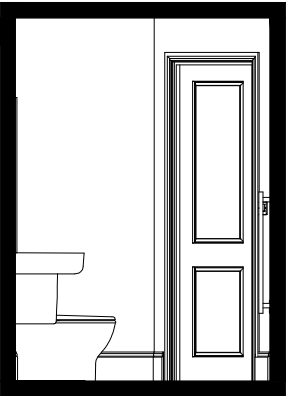
ENSUITE LAYOUT

Scale: 1 : 20

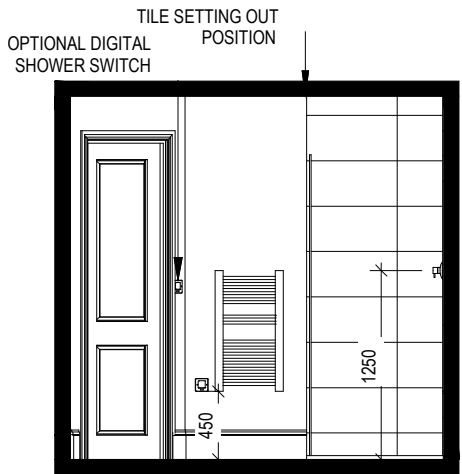


VIEW 1

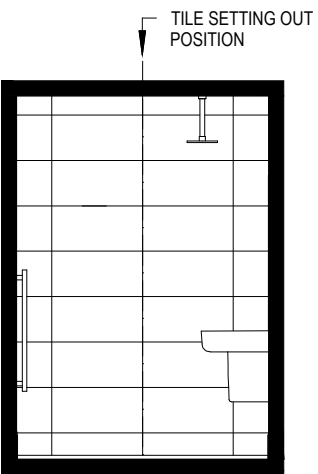
Scale: 1 : 50



VIEW 2



VIEW 3



VIEW 4

Harrogate

G SERIES

Ensuite Details

Scale

AS

Date

Jan 2023

DCC

2

Dwg No

703

Dwg Rev

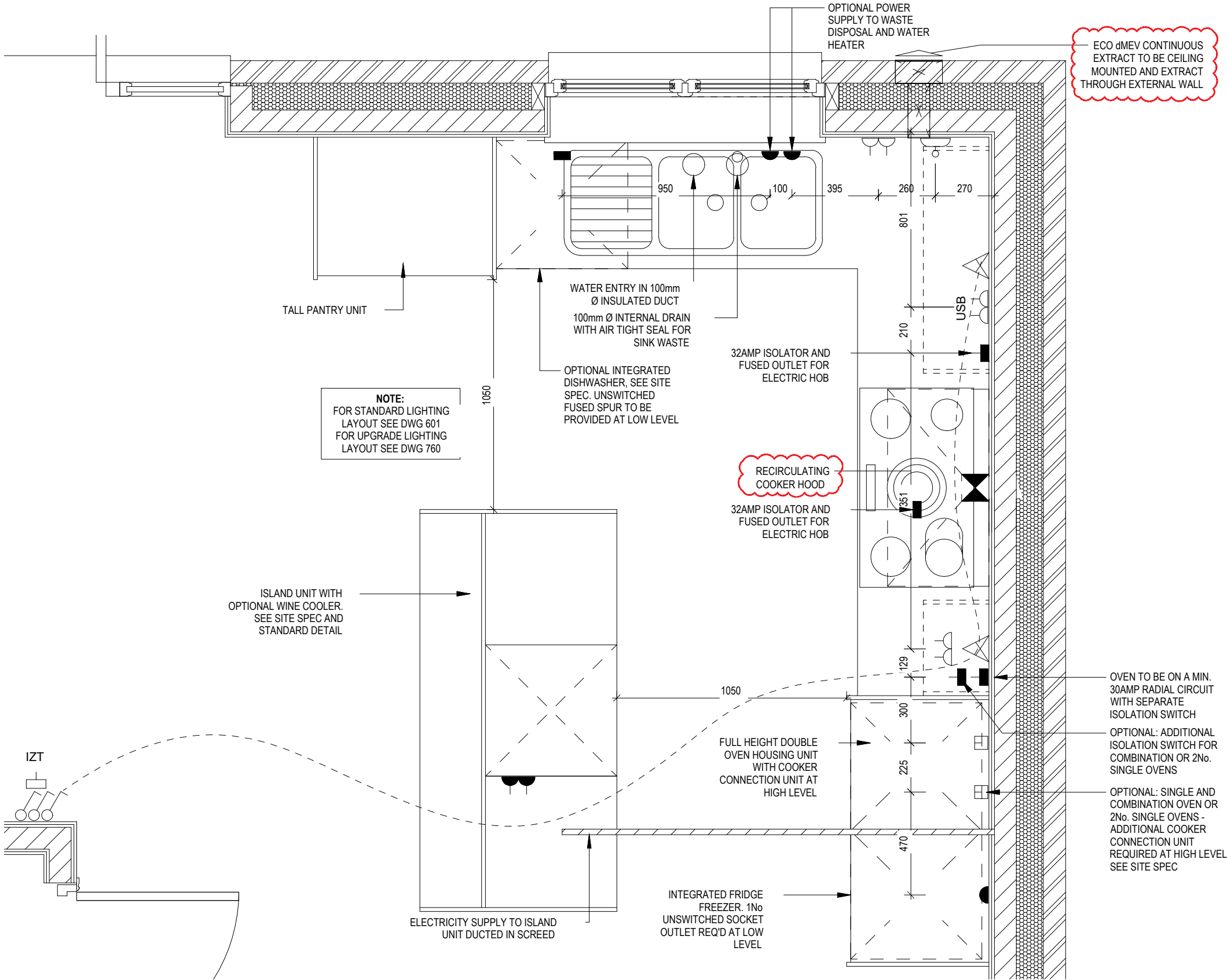
This drawing must be read in conjunction with relevant Redrow specifications, standard details & structural calculations. All dimension are taken from face of Brick/Block & Studwork. This drawing is subject to copyright. Not Scale Off This Drawing

ELECTRICAL LEGEND

- PELMET LIGHT FITTING
- FUSED OUTLET (IMMERSION)
- ISOLATOR SWITCH
- SINGLE SWITCH
- DOUBLE SWITCH
- TRIPLE SWITCH

NOTE: WHERE MULTIPLE SWITCHES ARE INDICATED TOGETHER THESE ARE TO BE SWITCHED ON ONE SINGLE PLATE NOT ON MULTIPLE PLATES.

- BANK OF SWITCHES TO ISOLATE HOB, EXTRACTOR HOOD, WASHING MACHINE, DISHWASHER, TUMBLE DRYER, FRIDGE/FREEZER, MICROWAVE OVEN, OPTIONAL WATER HEATER WITH NEON INDICATOR, ALL IN ACCORDANCE WITH THE APPLIANCE/SPACE PROVIDED ON LAYOUT.
- UNSWITCHED SOCKET / FUSED SPUR, TO BE CEILING MOUNTED, SEE STANDARD DETAILS
- SINGLE UNSWITCHED SOCKET (HIGH LEVEL)
- SINGLE UNSWITCHED SOCKET (LOW LEVEL)
- SINGLE UNSWITCHED FUSED SPUR (LOW LEVEL)
- DOUBLE S/W SOCKET OUTLET (HIGH LEVEL)
- DOUBLE S/W SOCKET OUTLET (LOW LEVEL)
- HEAT DETECTOR TO BS EN 14604: 2005, TO BE PERMANENTLY WIRED TO A SEPARATELY FUSED CIRCUIT AT THE DISTRIBUTION BOARD. WHERE MORE THAN ONE ARE INSTALLED THEY WILL BE INTER-CONNECTED. WIRING SHALL CONFORM TO IEE WIRING REGULATIONS. HEAT DETECTOR TO HAVE BATTERY BACKUP AND TO BE LOCATED A MIN. OF 300mm AWAY FROM ANY WALL AND LIGHT FITTING.
- DOUBLE S/W SOCKET OUTLET WITH USB (HIGH LEVEL)
- COOKER CONNECTION UNIT
- PROGRAMMER & HOT WATER TIMER
- PROGRAMMABLE THERMOSTAT



KITCHEN LAYOUT
Scale: 1 : 20

Harrogate G SERIES	Kitchen Layout	Scale	DCC	Dwg No	A
		As indicated	2	750	
		Date		Dwg Rev	
		Jan 2023			

A 05.11.24 Extract added to Kitchen



- ELECTRICAL LEGEND

PELMET LIGHT FITTING

FUSED OUTLET (IMMERSION)

ISOLATOR SWITCH

SINGLE SWITCH

DOUBLE SWITCH

TRIPLE SWITCH

NOTE: WHERE MULTIPLE SWITCHES ARE INDICATED TOGETHER THESE ARE TO BE SWITCHED ON ONE SINGLE PLATE NOT ON MULTIPLE PLATES.

BANK OF SWITCHES TO ISOLATE HOB, EXTRACTOR HOOD, WASHING MACHINE, DISHWASHER, TUMBLE DRYER, FRIDGE/FREEZER, MICROWAVE OVEN, OPTIONAL WATER HEATER WITH NEON INDICATOR, ALL IN ACCORDANCE WITH THE APPLIANCE/SPACE PROVIDED ON LAYOUT.

UNSWITCHED SOCKET / FUSED SPUR, TO BE CEILING MOUNTED, SEE STANDARD DETAILS

SINGLE UNSWITCHED SOCKET (HIGH LEVEL)

SINGLE UNSWITCHED SOCKET (LOW LEVEL)

SINGLE UNSWITCHED FUSED SPUR (LOW LEVEL)

DOUBLE S/W SOCKET OUTLET (HIGH LEVEL)

DOUBLE S/W SOCKET OUTLET (LOW LEVEL)

HEAT DETECTOR TO BS EN 14604: 2005, TO BE PERMANENTLY WIRED TO A SEPARATELY FUSED CIRCUIT AT THE DISTRIBUTION BOARD. WHERE MORE THAN ONE ARE INSTALLED THEY WILL BE INTER-CONNECTED. WIRING SHALL CONFORM TO IEE WIRING REGULATIONS. HEAT DETECTOR TO HAVE BATTERY BACKUP AND TO BE LOCATED A MIN. OF 300mm AWAY FROM ANY WALL AND LIGHT FITTING.

DOUBLE S/W SOCKET OUTLET WITH USB (HIGH LEVEL)

COOKER CONNECTION UNIT

PROGRAMMER & HOT WATER TIMER

PROGRAMMABLE THERMOSTAT

ECO dMEV CONTINUOUS EXTRACT TO BE CEILING MOUNTED AND EXTRACT THROUGH EXTERNAL WALL

SPACE FOR WASHING MACHINE. UNSWITCHED SOCKET REQUIRED AT LOW LEVEL

100mm Ø INTERNAL DRAIN WITH AIR TIGHT SEAL FOR SINK AND WASHING MACHINE WASTE

ECO dMEV CONTINUOUS EXTRACT TO BE CEILING MOUNTED AND EXTRACT THROUGH EXTERNAL WALL

SPACE FOR TUMBLE DRYER. UNSWITCHED SOCKET REQUIRED AT LOW LEVEL

OPTIONAL KITCHEN WALL UNITS SEE KITCHEN DESIGN SCHEDULES

NOTE
FOR STANDARD LIGHTING LAYOUT SEE DWG 601
FOR UPGRADE LIGHTING LAYOUT SEE DWG 760

DASHED LINE INDICATES EXTENT OF OPTIONAL FLOORING

UTILITY LAYOUT

Scale: 1 : 20

REDROW

Harrogate

G SERIES

Utility Layout

Scale

As indicated

Date

Jan 2023

DCC

2

Dwg No

751

Dwg Rev

A




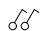
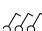

A

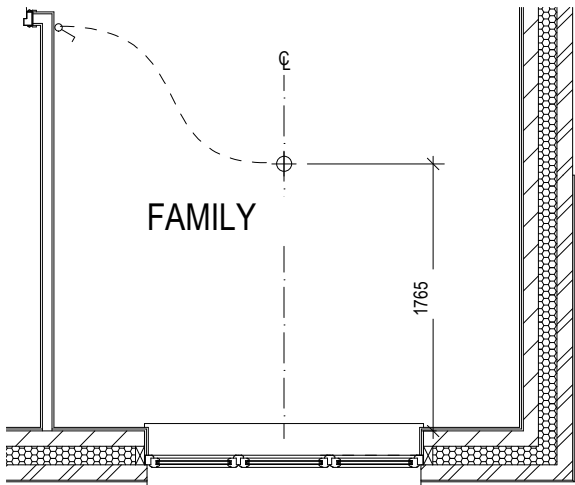
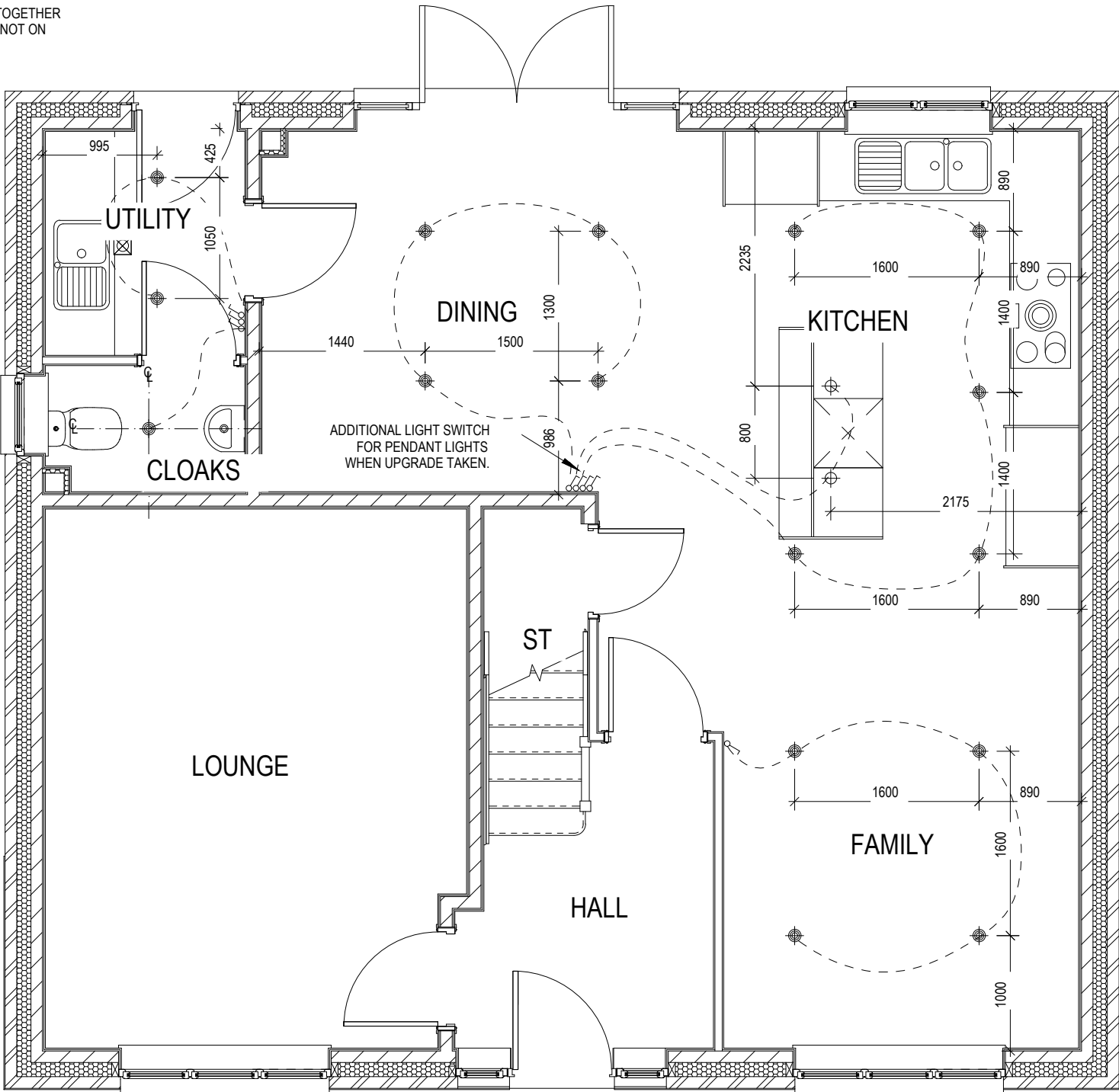
05.11.24


Extract added to Kitchen

This drawing must be read in conjunction with relevant Redrow specifications, standard details & structural calculations. All dimension are taken from face of Brick/Block & Studwork. This drawing is subject to copyright. Not Scale Off This Drawing

ELECTRICAL LEGEND

-  OPTIONAL LOW VOLTAGE DOWNLIGHTER FITTING
-  OPTIONAL PENDANT LIGHT FITTING
-  SINGLE SWITCH
-  DOUBLE SWITCH
-  TRIPLE SWITCH
-  MEV INTERMITTENT CEILING MOUNTED EXTRACT
- NOTE: WHERE MULTIPLE SWITCHES ARE INDICATED TOGETHER
THESE ARE TO BE SWITCHED ON ONE SINGLE PLATE NOT ON
MULTIPLE PLATES.





Harrogate

G SERIES

Optional Lighting Layout

Ground Floor

Scale
1 : 50




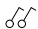
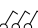

DCC
2

Dwg No
760

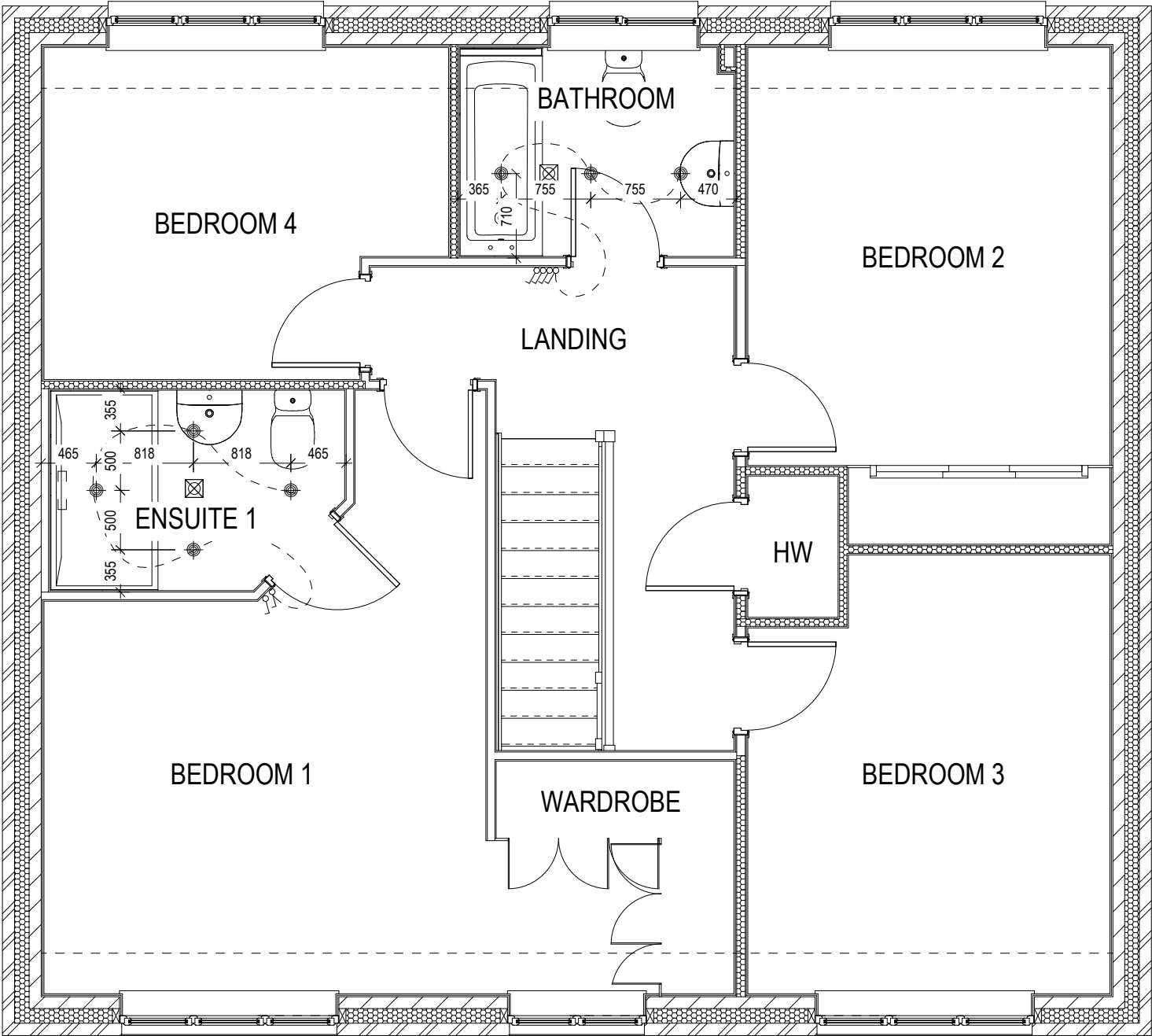
Date
Jan 2023

Dwg Rev

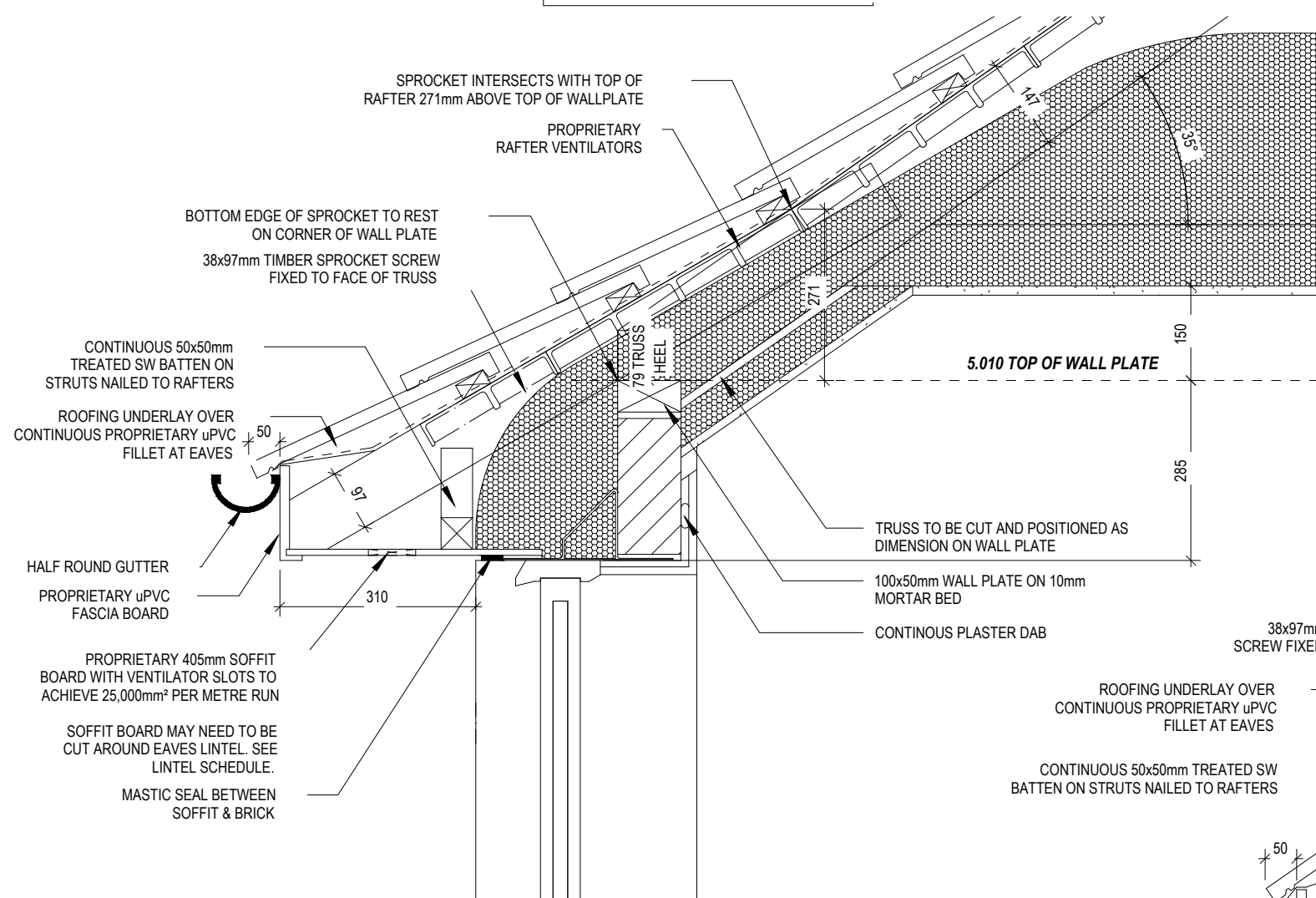
ELECTRICAL LEGEND

-  OPTIONAL LOW VOLTAGE DOWNLIGHTER FITTING
-  OPTIONAL PENDANT LIGHT FITTING
-  SINGLE SWITCH
-  DOUBLE SWITCH
-  TRIPLE SWITCH
-  MEV INTERMITTENT CEILING MOUNTED EXTRACT

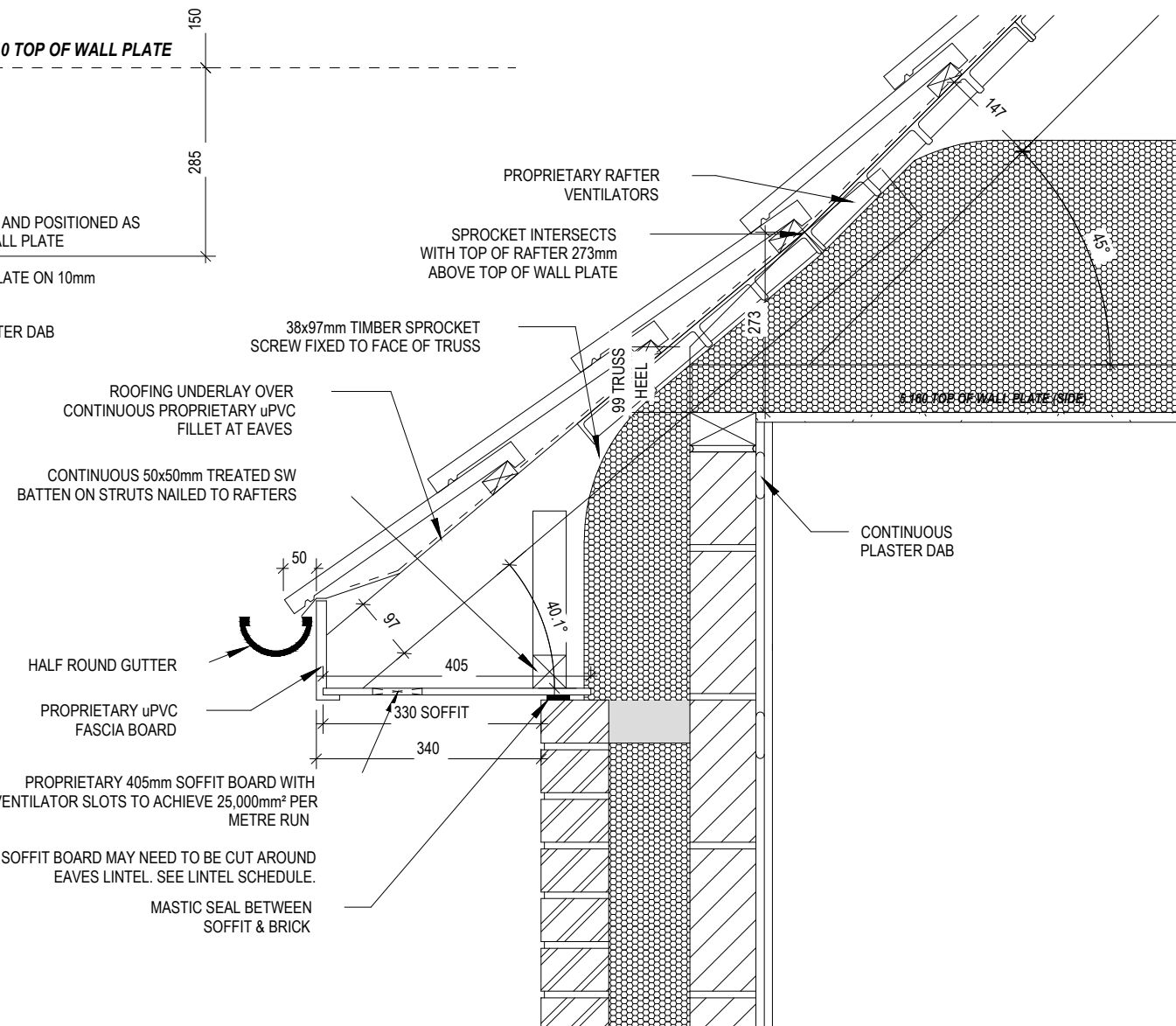
NOTE: WHERE MULTIPLE SWITCHES ARE INDICATED TOGETHER
THESE ARE TO BE SWITCHED ON ONE SINGLE PLATE NOT ON
MULTIPLE PLATES.



ROOF BRACING AND TRUSS DESIGN IN
ACCORDANCE WITH EUROCODE 5 (EC5).
DESIGNED AND MANUFACTURED BY SPECIALIST.



DROPPED EAVES SPROCKET DETAIL
35° MAIN PITCH WITH 30.1° SPROCKET



EAVES SPROCKET DETAIL
45° MAIN PITCH WITH 40.1° SPROCKET