

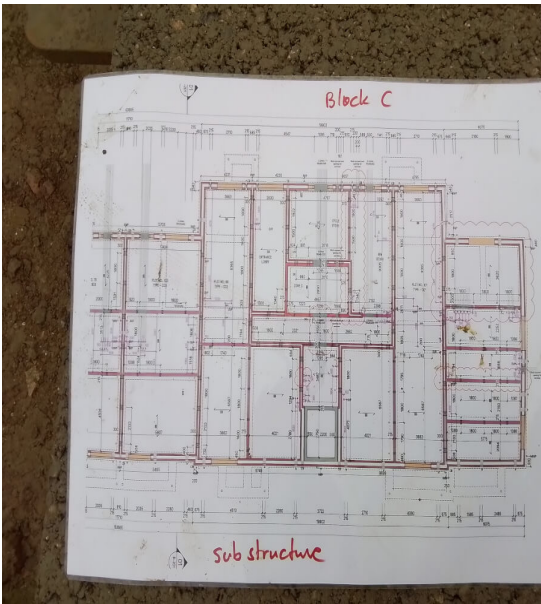
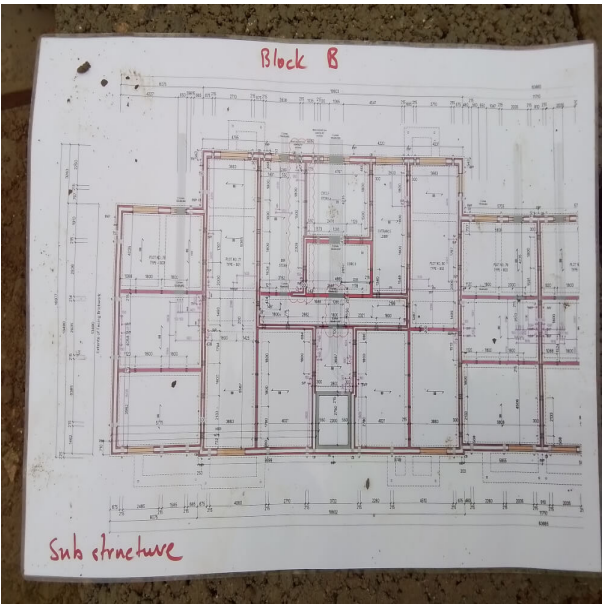
Pre-Inspection Checklist Sub Structure Block Work to FFL	
Project: Taylor Wimpey North Finchley site	Date: 15 January 2025
Area: Block BC	Am / Pm: AM
Locaton: Block BC	Drawing Number: 22227-BM-BC-L1-DR-A-150 C6
Weather Condition: Cold / wet	Sheet Number: 22227-BM-BC-L1-DR-A-151 C5

Table of Contents

- Setting Out Line & Level to Current Drawings
- Product Material Compliant With Engineers/Architect Specification
- Specified Bedding Depth, Colour & Mlxing Ratio to Specification
- Specified DPC Installed & at Correct Level
- Specified Wall Ties & Air Vents Installed at Correct Location & Height
- DPC / Membrane Installed as Per Specification
- Brick Type
- Lintel Bearing

Completed By: LP

Date Completed: 15 January 2025



Completed By: LP

Date Completed: 15 January 2025



Completed By: LP

Date Completed: 15 January 2025



Completed By: LP

Date Completed: 15 January 2025



Completed By: LP

Date Completed: 15 January 2025



Completed By: LP

Date Completed: 10 March 2025



Completed By: LP

Date Completed: 15 January 2025



Completed By: LP

Date Completed: 15 January 2025



Proceed/not proceed

Reason for Rejection/Comments: na

Signed for HOULIHAN: Logesparan Priyaparan

Date: 2025-01-15

Signed for client by: Harvey scott

Date: 2025-03-28

The above inspections have been carried out and are acceptable/unacceptable

Non Conformities/Comments

Reason for non Conformities/Comments: na

Signed for HOULIHAN: Logesparan Priyaparan

Date: 2025-03-04

Signed for client by: Harvey scott

Date: 2025-03-28